



New Build

NAU  
YACHTS

## FLEXPLORES 146<sup>4</sup>

MOTOR YACHT CANTIERE DELLE MARCHE 44.3M 2028

FLAG -

MOTOR YACHT


## FLEXPLORER 146<sup>4</sup>

The **Flexplorer 146<sup>4</sup>**, the largest and most impressive model in the **Flexplorer** line, is a grand vessel offering abundant interior and exterior spaces across all four decks. Its remarkably flexible layout can be tailored to meet the unique preferences and lifestyle of each owner. The spacious hull and superstructure can accommodate numerous large tenders, water toys, and a variety of equipment for exploring on water, underwater, and on land. At the owner's discretion, the yacht can be equipped with a powerful A-frame crane with multiple lifting points or without one.



[see more information about M/Y Flexplorer 146<sup>4</sup> at www.nauyachts.com](http://www.nauyachts.com)

# SPECIFICATION

SHIPYARD, MODEL	Cantiere Delle Marche Flexplorer 146 <sup>4</sup>
DELIVERY AT THE SHIPYARD	2028
LENGTH	44.3 m
WATERLINE LENGTH	41.7 m
HULL CONFIGURATION	DISPLACEMENT
BEAM	8.6 m
RANGE	5000
DRAFT	2.65 m
GROSS TONNAGE	499 GT
YACHT CLASS	C  HULL • MACH Y
CABINS	6+7
MASTER CABIN	UPPER DECK
GUESTS	12
BERTHS	12(16)+14
CREW	14
HEADS	7+5

EXTERIOR DESIGN	HYDRO TEC
INTERIOR DESIGN	HYDRO TEC
HULL	STEEL
SUPERSTRUCTURE	ALUMINIUM
ENGINES	2 x Caterpillar C32 ACERT 1000 h.p.
TYPE OF DRIVE	SHAFT LINE
ENGINE HOURS	N/A
MAXIMUM SPEED	14 kn
CRUSING SPEED	10 kn
FUEL CONSUMPTION AT ECONOMICAL SPEED	N/A
FUEL	65400 l
GREY WATER	8200 l
BLACK WATER	2960 l
FRESH WATER	5950 l
DISPLACEMENT	460

[see more information about M/Y Flexplorer 146<sup>4</sup> at www.nauyachts.com](http://www.nauyachts.com)



EXTERIOR FLEXPLOER 146<sup>4</sup> CANTIERE DELLE MARCHE

M/Y FLEXPLOER 146<sup>4</sup>



EXTERIOR FLEXPLORER 146<sup>4</sup> CANTIERE DELLE MARCHE

M/Y FLEXPLORER 146<sup>4</sup>



EXTERIOR FLEXPLOER 146<sup>4</sup> CANTIERE DELLE  
MARCHE

M/Y FLEXPLOER 146<sup>4</sup>



# EXTERIOR FLEXPLORER 146<sup>4</sup> CANTIERE DELLE MARCHE

M/Y FLEXPLORER 146<sup>4</sup>



EXTERIOR FLEXPLOER 146<sup>4</sup> CANTIERE DELLE  
MARCHE

M/Y FLEXPLOER 146<sup>4</sup>



EXTERIOR FLEXPLOER 146<sup>4</sup> CANTIERE DELLE  
MARCHE

M/Y FLEXPLOER 146<sup>4</sup>



EXTERIOR FLEXPLORER 146<sup>4</sup> CANTIERE DELLE  
MARCHE

M/Y FLEXPLORER 146<sup>4</sup>



## BEACH CLUB

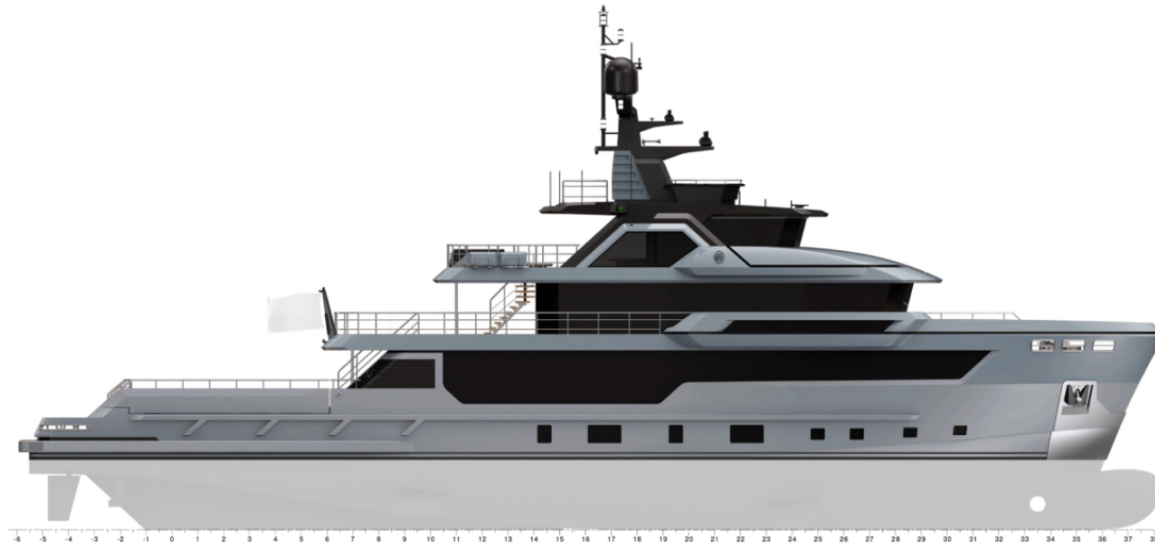
M/Y FLEXPLOER 146<sup>4</sup>



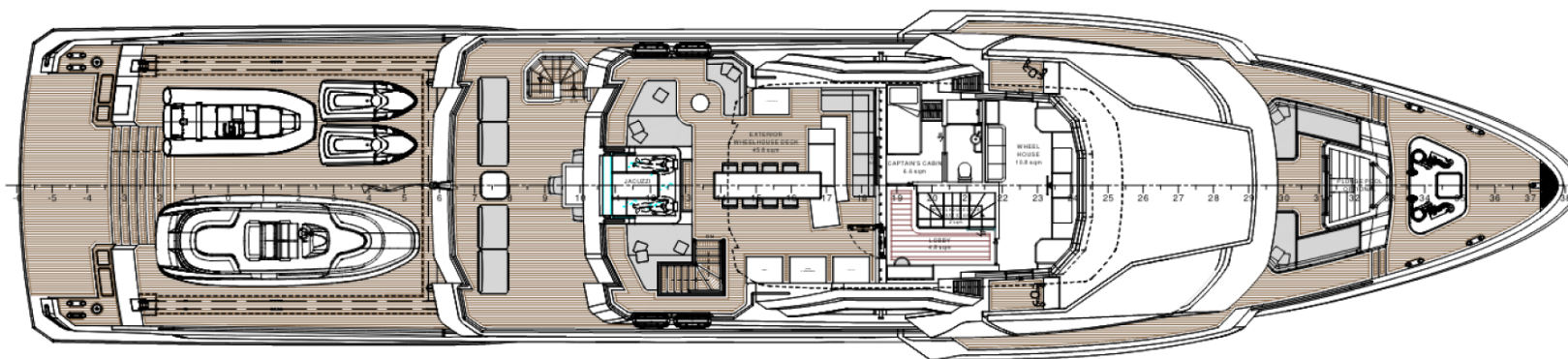
BOW LOUNGE AREA

M/Y FLEXPLORER 146<sup>4</sup>

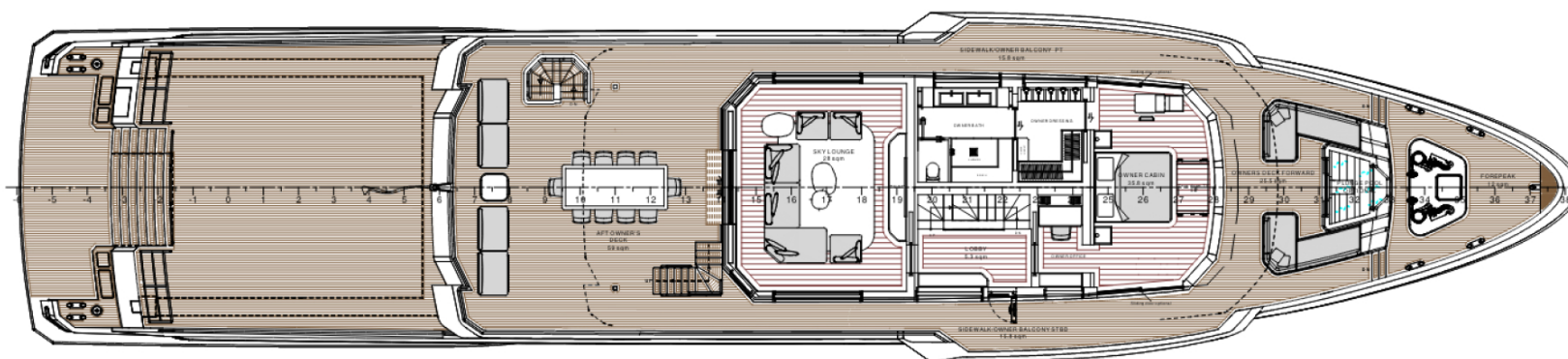
# General Arrangement



PROFILE



SUNDECK



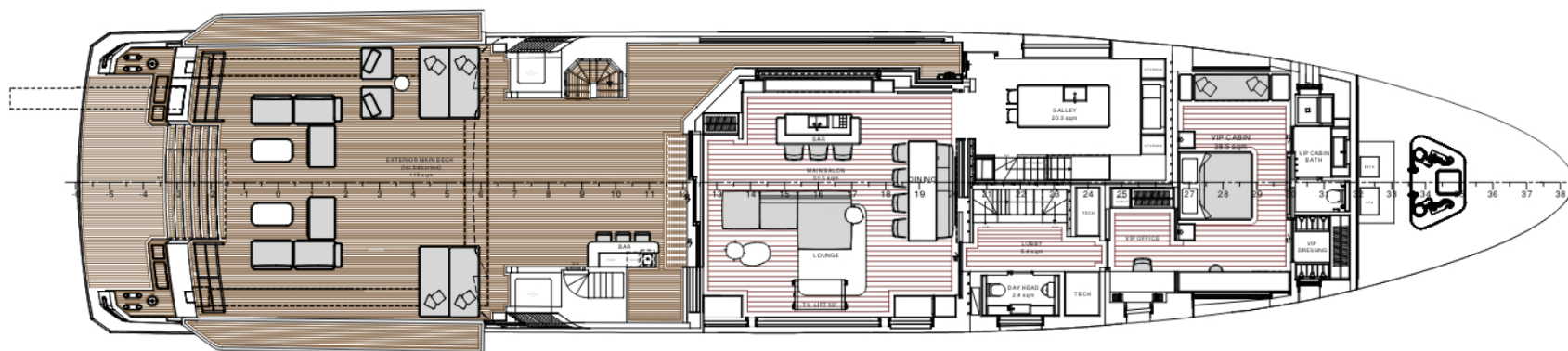
---

---

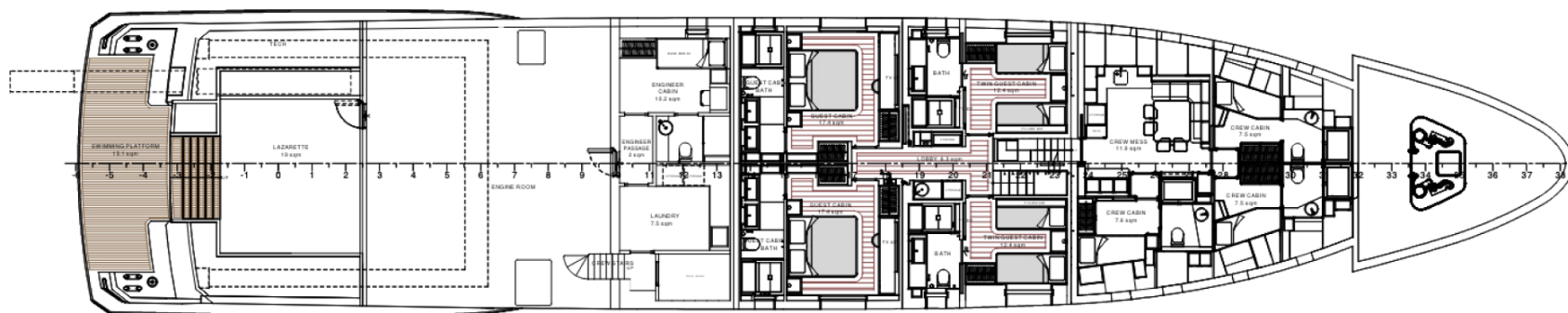
---

---

## UPPER DECK



MAIN DECK



LOWER DECK



KIRILL KUATOV

+377 607 93 15 20

+39 333 576 44 44

[Send e-mail](#)

[WhatsApp](#)

[Telegram](#)