



Brokerage

NAU
YACHTS

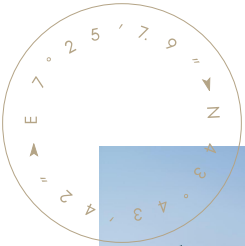
MAVERICK

MOTOR YACHT ADMIRAL 39.8M 2013

€10,899,000 (VAT paid)
FLAG - MARSHALL ISLANDS

MOTOR YACHT

MAVERICK



MAVERICK - a 39.8-metre aluminium **Admiral** launched in 2013 - distinguishes itself with an impressive 479 GT, a volume rarely seen in this size category and one that places her closer to 50-metre yachts in terms of onboard space. This scale translates directly into a high level of comfort, both for private owners and for charter clients seeking generous living areas.

Her exterior by **Luca Dini Design** gives **MAVERICK** a dynamic, contemporary profile, while the **Admiral Centro Stile** interior delivers a clean, modern ambience tailored for relaxed living. Accommodation is arranged for up to 11 guests in five cabins. The master suite on the main deck includes a private office and his-and-hers bathrooms, while the lower deck features two spacious forward VIP cabins, along with a double and a twin cabin.

The main saloon blends lounge and dining into a single open, light-filled space framed by panoramic windows. Above, the skylounge offers a quieter retreat - equally suited for afternoon relaxation or evening cinema sessions.

Outdoor spaces are designed with versatility in mind. The sun deck features a jacuzzi and a large aft lounge that can transform into an open-air cinema. The upper deck provides an elegant setting for alfresco dining, while the bow is arranged with sunpads for quieter moments. At water level, the beach club forms a practical hub for swimming, boarding tenders and launching water toys.

Performance reinforces **MAVERICK's** all-round appeal. Her semi-displacement hull ensures both stability and economical cruising, while twin MTU 12V 2000 M94 engines deliver a cruising speed of 14 knots and a top speed of 20 knots. A range of up to 4,950 nautical miles enables extended itineraries, the 2.55-metre draft grants access to shallow bays, and Zero-Speed stabilisers provide comfort in all sea conditions.

[see more information about M/Y MAVERICK at www.nauyachts.com](http://www.nauyachts.com)

SPECIFICATION

SHIPYARD, MODEL	Admiral 40M
BUILT	2013
LENGTH	39.8 m
WATERLINE LENGTH	38.11 m
HULL CONFIGURATION	SEMI-DISPLACEMENT
BEAM	8.36 m
RANGE	3245
DRAFT	2.55 m
GROSS TONNAGE	479 GT
YACHT CLASS	RINA
CABINS	5+4
MASTER CABIN	MAIN DECK
GUESTS	11
BERTHS	11+8
CREW	8
HEADS	6+4

EXTERIOR DESIGN	LUCA DINI DESIGN & ARCHITECTURE
INTERIOR DESIGN	ADMIRAL CENTRO STILE
HULL	ALUMINUM
SUPERSTRUCTURE	ALUMINIUM
ENGINES	2 x MTU 12V 2000M94 1920 h.p.
TYPE OF DRIVE	SHAFT LINE
ENGINE HOURS	N/A
MAXIMUM SPEED	20 kn
CRUSING SPEED	14 kn
FUEL CONSUMPTION AT ECONOMICAL SPEED	~ 220 l/h
FUEL	51000 l
GREY WATER	N/A
BLACK WATER	N/A
FRESH WATER	8963 l
DISPLACEMENT	1063

[see more information about M/Y MAVERICK at www.nauyachts.com](http://www.nauyachts.com)



EXTERIOR ADMIRAL 40M 2013 MY MAVERICK

M/Y MAVERICK



EXTERIOR ADMIRAL 40M 2013 MY MAVERICK

M/Y MAVERICK



EXTERIOR ADMIRAL 40M 2013 MY MAVERICK

M/Y MAVERICK



AFT MAIN DECK LOUNGE AREA

M/Y MAVERICK



AFT MAIN DECK LOUNGE AREA

M/Y MAVERICK



AFT UPPER DECK DINING AREA

M/Y MAVERICK



AFT UPPER DECK DINING AREA

M/Y MAVERICK



AFT UPPER DECK LOUNGE AREA

M/Y MAVERICK



AFT UPPER DECK LOUNGE AREA

M/Y MAVERICK



BOW LOUNGE AREA

M/Y MAVERICK



SUNDECK LOUNGE AREA

M/Y MAVERICK



SUNDECK LOUNGE AREA

M/Y MAVERICK



SUNDECK DINING AREA

M/Y MAVERICK



SUNDECK JACUZZI

M/Y MAVERICK



SUNDECK JACUZZI

M/Y MAVERICK



MAIN SALON LOUNGE AREA

M/Y MAVERICK



MAIN SALON LOUNGE AREA

M/Y MAVERICK



MAIN SALON LOUNGE AREA

M/Y MAVERICK



MAIN SALON DINING AREA

M/Y MAVERICK



MAIN SALON LOBBY

M/Y MAVERICK



MASTER CABIN

M/Y MAVERICK



MASTER CABIN

M/Y MAVERICK



OFFICE IN THE MASTER CABIN

M/Y MAVERICK



MASTER BATHROOM

M/Y MAVERICK



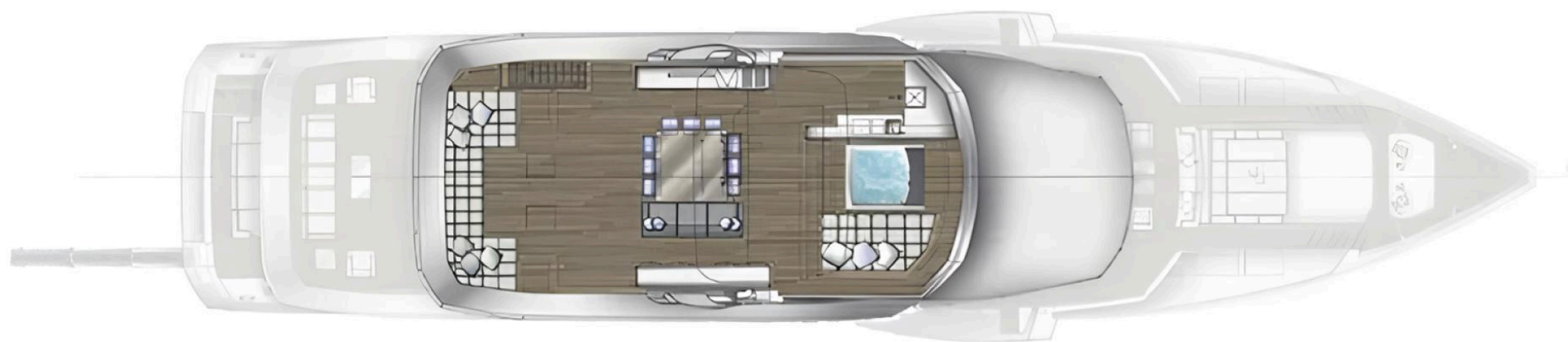
GUEST CABIN

M/Y MAVERICK

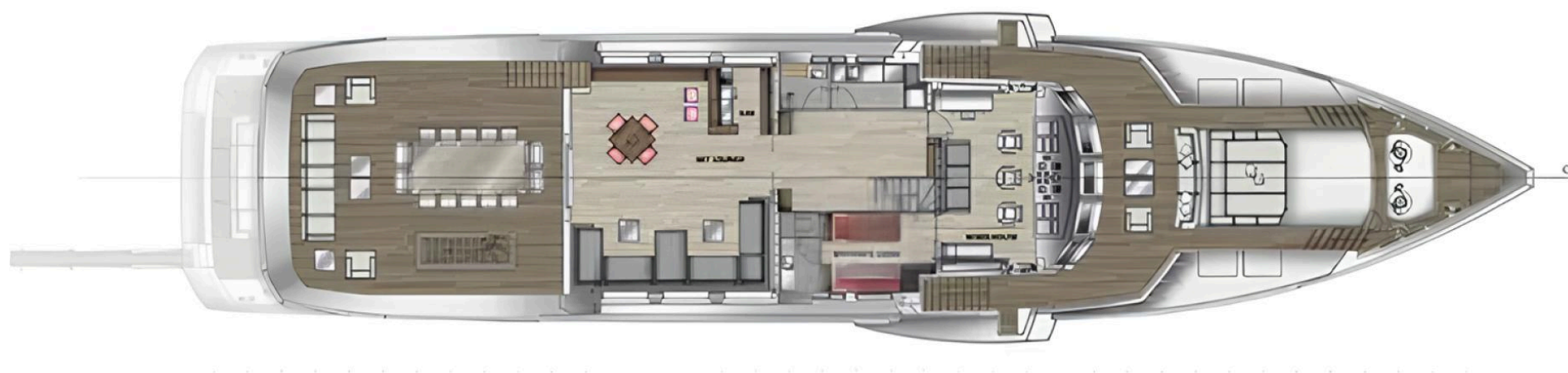
General Arrangement



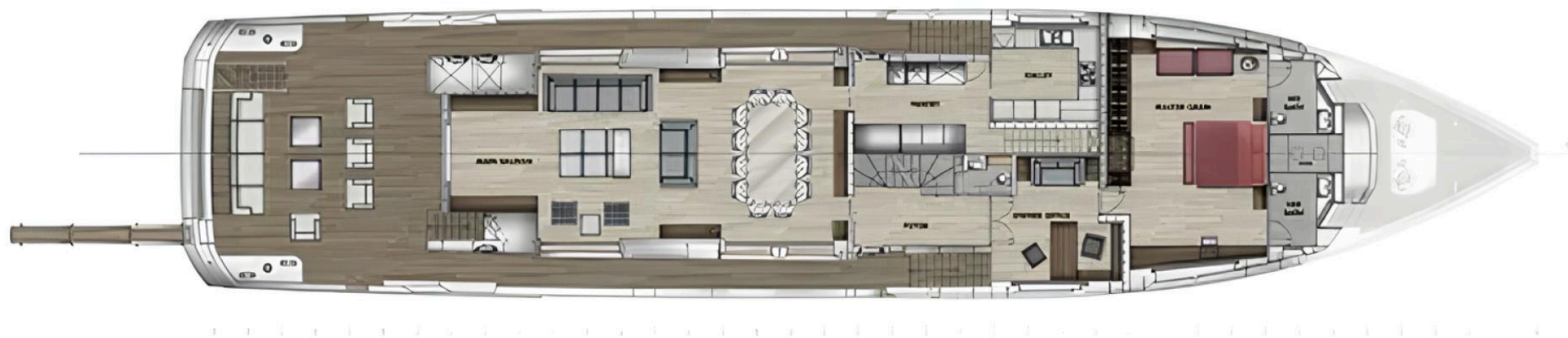
PROFILE



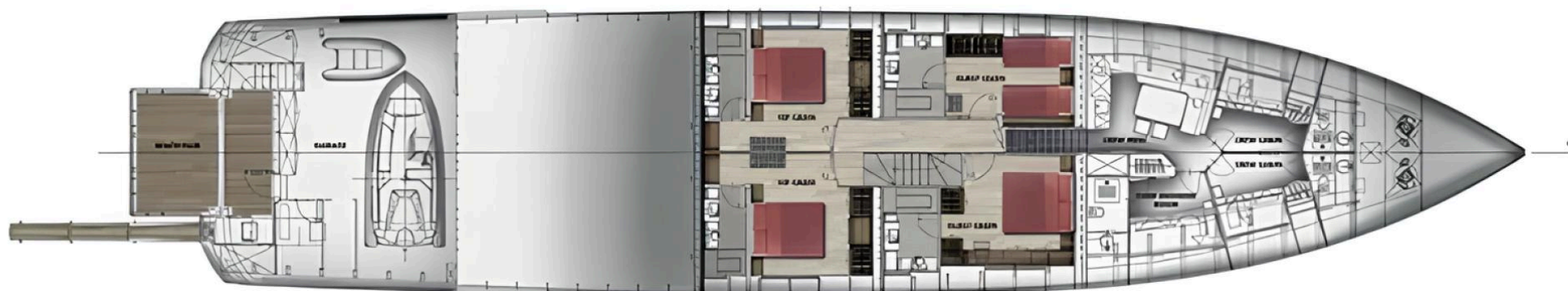
SUNDECK



UPPER DECK



MAIN DECK



LOWER DECK



KIRILL KUATOV

+377 607 93 15 20

+39 333 576 44 44

 [Send e-mail](#)

 WhatsApp

 Telegram