



Brokerage

NAU
YACHTS

A+

MOTOR YACHT BENETTI 34M 2024

€19,499,000

FLAG - CAYMAN ISLANDS

MOTOR YACHT

A+



The motor yacht **A+** is a 34-meter **Benetti Oasis 34** launched in 2024, blending Italian craftsmanship with American design by Bonetti/Kozerski. This three-deck yacht delivers an exceptional yachting experience with a strong focus on comfort. She accommodates up to 11 guests across five elegantly appointed cabins: a full-beam master suite, two VIP cabins, and two guest cabins, one of which includes an additional Pullman berth.

The exterior spaces are designed for relaxation and entertainment. Expansive decks feature a stylish beach club and a large swim platform for easy water access. The sun deck offers a jacuzzi, sun loungers, and an outdoor bar - perfect for leisure and socializing. Guests also have access to a fully equipped gym, outdoor showers, and multiple alfresco dining areas, ensuring a luxurious onboard lifestyle.

A+ is equipped with advanced navigation and communication systems, including radar, depth sounders, GPS, autopilot, magnetic compass, weather sensors, and an integrated system controlling all yacht functions. A central monitoring system oversees engines, generators, water supply, ventilation, lighting, alarms, and fire safety. Safety features include fire extinguishers, NOVEC engine room suppression, life jackets, and life rafts.

Combining the high standards of Italian shipbuilding with modern AV and navigation technology, as well as advanced safety and comfort engineering, **A+** is fully ready for private use and long-range cruising, offering maximum convenience for both guests and crew.

[see more information about M/Y A+ at www.nauyachts.com](http://www.nauyachts.com)

SPECIFICATION

SHIPYARD, MODEL	Benetti Oasis 34M
BUILT	2024
LENGTH	34 m
WATERLINE LENGTH	33.3 m
HULL CONFIGURATION	DISPLACEMENT
BEAM	7.7 m
RANGE	2700
DRAFT	2.05 m
GROSS TONNAGE	265 GT
YACHT CLASS	RINA
CABINS	5+4
MASTER CABIN	MAIN DECK
GUESTS	11
BERTHS	11+7
CREW	7
HEADS	7+4

EXTERIOR DESIGN	RWD
INTERIOR DESIGN	BONETTI KOZERSKI ARCHITECTURE
HULL	GRP
SUPERSTRUCTURE	GRP
ENGINES	2 x MTU 10V 1361 h.p.
TYPE OF DRIVE	SHAFT LINE
ENGINE HOURS	834 h
MAXIMUM SPEED	16 kn
CRUISING SPEED	12 kn
FUEL CONSUMPTION AT ECONOMICAL SPEED	N/A
FUEL	25000 l
GREY WATER	3000 l
BLACK WATER	3000 l
FRESH WATER	4500 l
DISPLACEMENT	200

[see more information about M/Y A+ at www.nauyachts.com](http://www.nauyachts.com)



EXTERIOR BENETTI OASIS 34M 2024 MY A+

M/Y A+



EXTERIOR BENETTI OASIS 34M 2024 MY A+

M/Y A+



EXTERIOR BENETTI OASIS 34M 2024 MY A+

M/Y A+



COCKPIT

M/Y A+



SWIMMING PLATFORM

M/Y A+



AFT MAIN DECK LOUNGE AREA

M/Y A+



AFT MAIN DECK LOUNGE AREA

M/Y A+



AFT MAIN DECK LOUNGE AREA

M/Y A+



AFT UPPER DECK LOUNGE AREA

M/Y A+



AFT UPPER DECK DINING AREA

M/Y A+



BOW AREA

M/Y A+



BOW LOUNGE AREA

M/Y A+



BOW LOUNGE AREA

M/Y A+



BOW LOUNGE AREA

M/Y A+



SUNDECK

M/Y A+



SUNDECK LOUNGE AREA

M/Y A+



SUNDECK DINING AREA

M/Y A+



SUNDECK DINING AREA

M/Y A+



UPPER DECK SALOON

M/Y A+



UPPER DECK SALOON

M/Y A+



UPPER DECK SALOON

M/Y A+



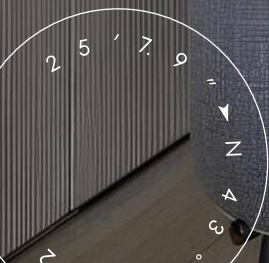
MAIN SALON LOUNGE AREA

M/Y A+



MAIN SALON LOUNGE AREA

M/Y A+



MAIN SALON DINING AREA

M/Y A+



MAIN SALON DINING AREA

M/Y A+



MASTER CABIN

M/Y A+



MASTER CABIN

M/Y A+



MASTER BATHROOM

M/Y A+



STAIRS FROM MD TO LD

M/Y A+



VIP CABIN

M/Y A+



VIP CABIN

M/Y A+



VIP BATHROOM

M/Y A+



GUEST CABIN

M/Y A+



GUEST BATHROOM

M/Y A+

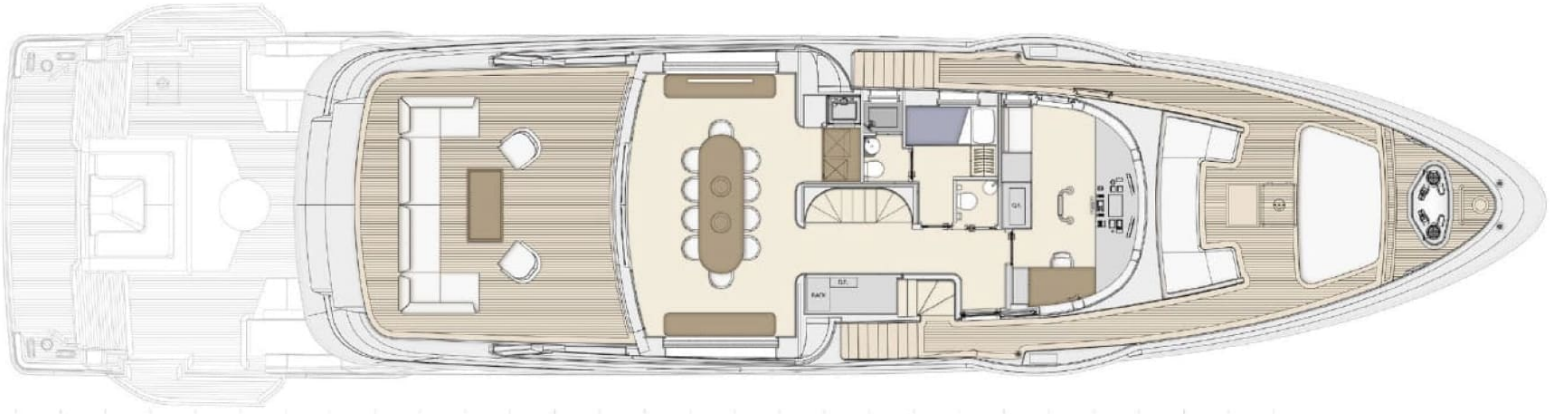
General Arrangement



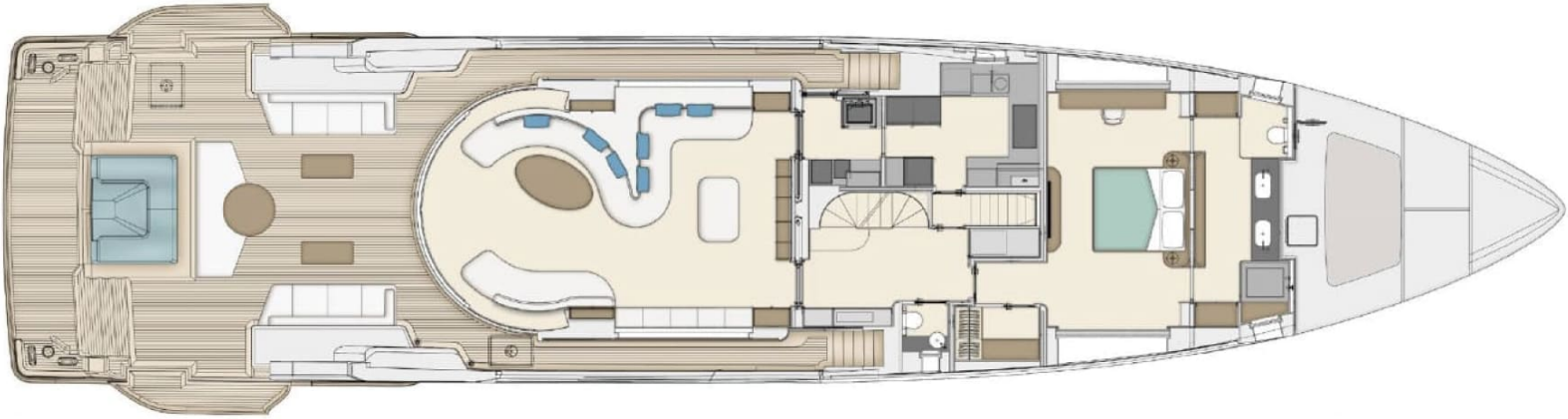
PROFILE



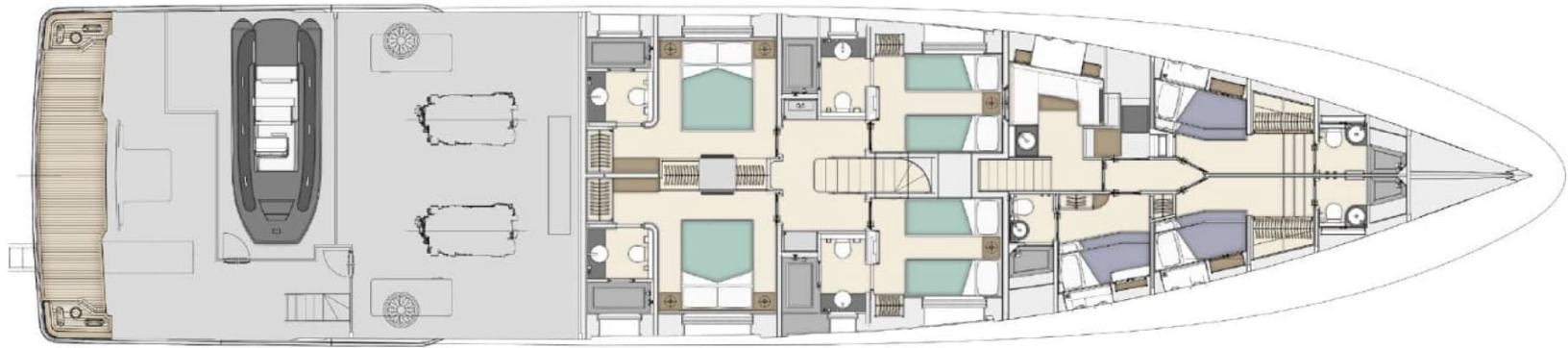
SUNDECK



UPPER DECK



MAIN DECK



LOWER DECK



KIRILL KUATOV

+377 607 93 15 20

+39 333 576 44 44

[Send e-mail](#)

[WhatsApp](#)

[Telegram](#)

[More information about M/Y A+ at www.nauyachts.com](http://www.nauyachts.com)

[Watch video](#)