



New Build

NAU
YACHTS

YXT 20

MOTOR YACHT LYNX 21.44M 2026

FLAG -

MOTOR YACHT

YXT 20



YXT 20 is a 21.44-meter support vessel built by **Lynx Yachts** in collaboration with Diana Yacht Design and Franck Darnet Design. The most compact model in the Yacht X Tender range, it combines the capabilities of an expedition vessel with a small footprint. With a steel hull and Bureau Veritas classification, it is designed for use either as part of a mothership fleet or as a standalone utility yacht. Powered by twin 715 hp Cummins engines, **YXT 20** cruises at 14 knots with a range of up to 900 nautical miles. The 45-square-meter main deck is dedicated to transporting tenders, jet skis, diving gear, or compact vehicles. Equipment handling is made easy with two cranes: a primary rotating crane with a lifting capacity of 1.7 tons, and a secondary crane serving the beach club area. The interior features a restrained, modern aesthetic and accommodates two guests and two crew across two cabins. Spaces on board are highly adaptable and include a galley, laundry area, storage rooms, and options for installing additional refrigeration or wine storage units. The aft platform provides easy access to the water and can double as a space for watersports or relaxation. With its durable construction, flexible layout, and manageable size, **YXT 20** is ideal for owners seeking a reliable and versatile support vessel or a compact standalone platform for exploration.

[see more information about M/Y YXT 20 at www.nauyachts.com](http://www.nauyachts.com)

SPECIFICATION

SHIPYARD, MODEL	Lynx YXT 20
BUILT	2026
LENGTH	21.44 m
WATERLINE LENGTH	20.6 m
HULL CONFIGURATION	DISPLACEMENT
BEAM	5.51 m
RANGE	900
DRAFT	1.3 m
GROSS TONNAGE	45 GT
YACHT CLASS	BUREAU VERITAS
CABINS	1+1
MASTER CABIN	LOWER DECK
GUESTS	2
BERTHS	2+2
CREW	2
HEADS	1

EXTERIOR DESIGN	DIANA YACHT DESIGN AND LYNX
INTERIOR DESIGN	FRANCK DARNET DESIGN
HULL	STEEL
SUPERSTRUCTURE	ALUMINIUM
ENGINES	2 x Cummins 715 h.p.
TYPE OF DRIVE	SHAFT LINE
ENGINE HOURS	N/A
MAXIMUM SPEED	16 kn
CRUSING SPEED	14 kn
FUEL CONSUMPTION AT ECONOMICAL SPEED	~ 280 l/h
FUEL	13000 l
GREY WATER	1200 l
BLACK WATER	400 l
FRESH WATER	900 l
DISPLACEMENT	67

[see more information about M/Y YXT 20 at www.nauyachts.com](http://www.nauyachts.com)



EXTERIOR LYNX YACHTS YXT 20 2026

M/Y YXT 20



EXTERIOR LYNX YACHTS YXT 20 2026

M/Y YXT 20



EXTERIOR LYNX YACHTS YXT 20 2026

M/Y YXT 20



EXTERIOR LYNX YACHTS YXT 20 2026

M/Y YXT 20



EXTERIOR LYNX YACHTS YXT 20 2026

M/Y YXT 20



BOW AREA

M/Y YXT 20



AFT AREA

M/Y YXT 20



AFT AREA

M/Y YXT 20



MAIN HELM STATION

M/Y YXT 20



CREW CABIN

M/Y YXT 20



GALLEY

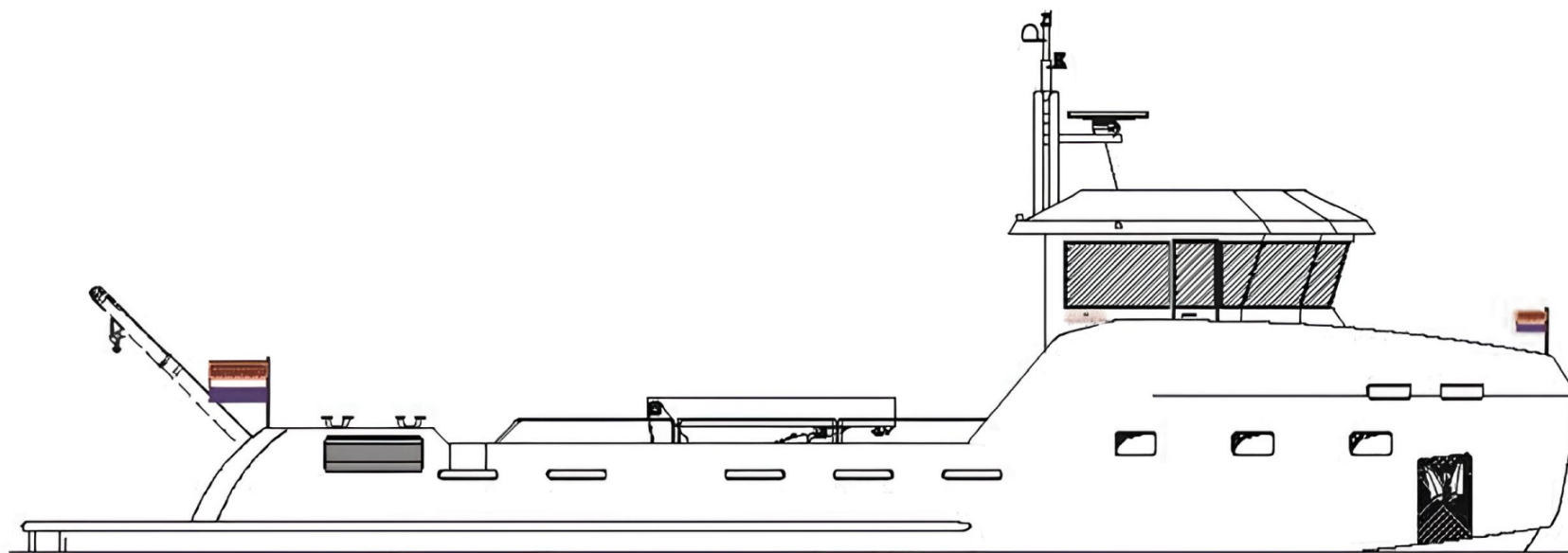
M/Y YXT 20



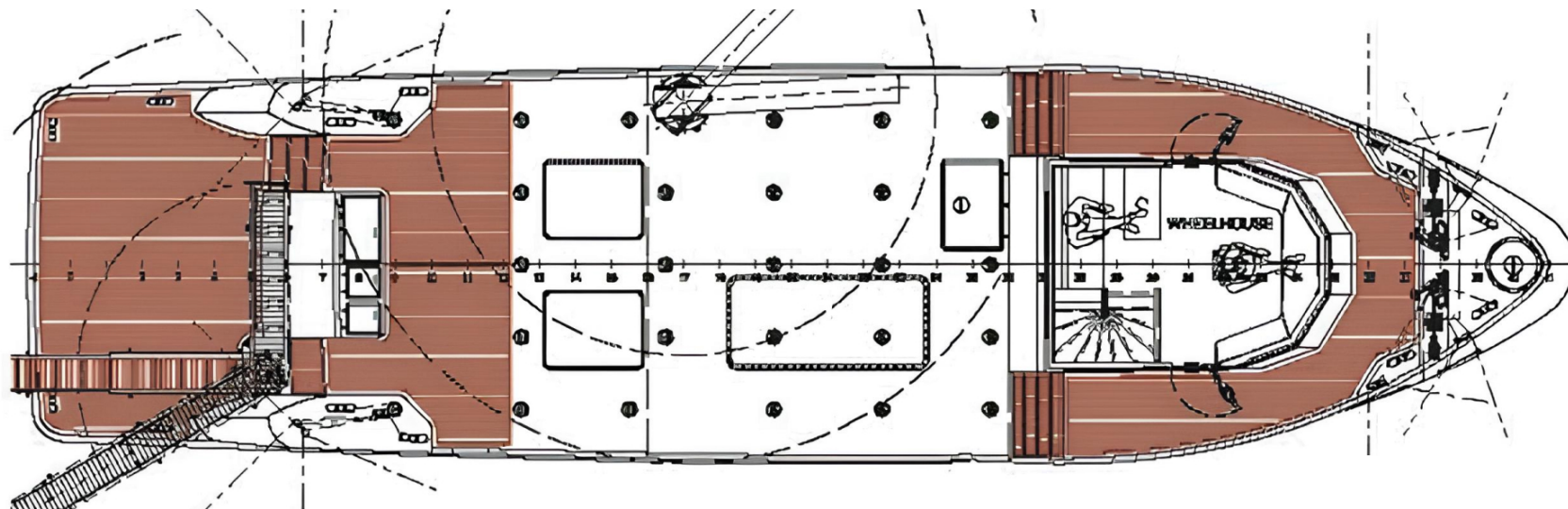
GARAGE

M/Y YXT 20

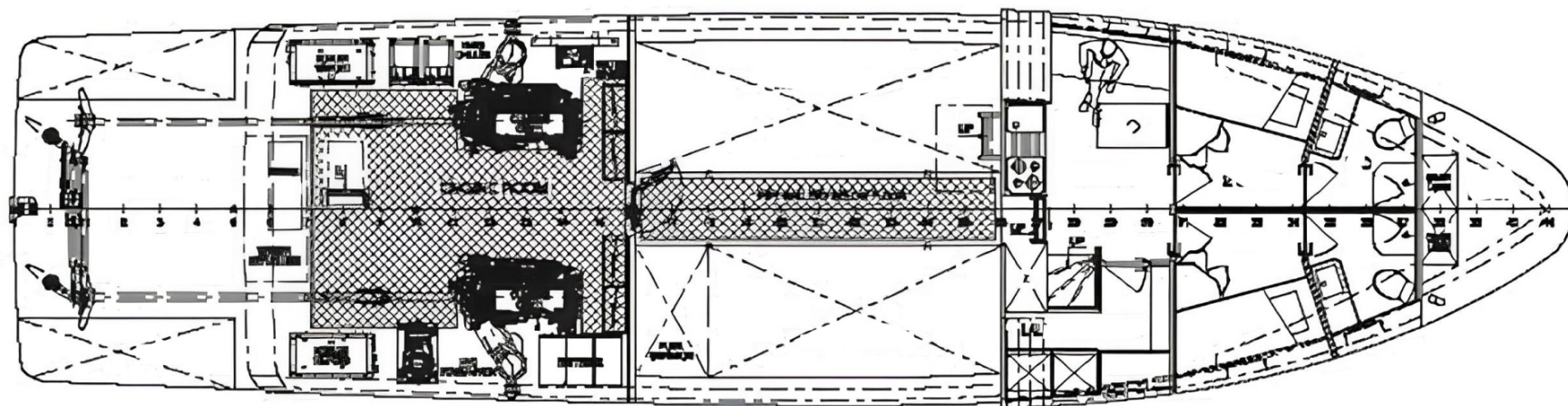
General Arrangement



PROFILE



MAIN DECK



LOWER DECK



KIRILL KUATOV

+377 607 93 15 20

+39 333 576 44 44

 [Send e-mail](#)

 WhatsApp

 Telegram