



Brokerage

NAU
YACHTS

HERE COMES THE SUN

MOTOR YACHT

AMELS 89M

2017

€185,000,000

FLAG - CAYMAN ISLANDS

MOTOR YACHT

HERE COMES THE SUN



HERE COMES THE SUN is the 89-metre flagship of **Amels** and the winner of the 2022 World Superyacht Awards in the "Best Refit" category. With a gross tonnage of 2,955 GT, she underwent a major transformation between 2020 and 2021, which included a 6-metre extension, a striking new navy-blue hull, and a comprehensive redesign of both technical systems and guest spaces.

Her refined exterior by Tim Heywood is matched by a renewed interior by Winch Design, creating a harmonious onboard atmosphere defined by luxury and attention to detail. The revised layout introduces two VIP suites on the bridge deck, each with its own 12-metre balcony. The expansive beach club measures 15 by 8 metres and features folding terraces, a hydraulic swim platform, and a stylish lounge with a bar. A full wellness centre has been added with a sauna, steam room, massage room, and a dedicated pool. The private owner's deck includes panoramic views, a study, its own lounge, and secluded terraces. The sun deck offers a Jacuzzi, gym equipment, a bar, and a fully certified helipad. Additional amenities include a cinema and seven guest suites, with VIP cabins that can be adapted to different configurations.

A glass elevator provides seamless access to all decks. The yacht's generous garage houses Yachtwerft Meyer tenders, including a 10.5-metre limousine and a 9.2-metre RIB, along with a vast collection of water toys and equipment for water sports.

Powered by twin 3,000 hp Caterpillar engines, **HERE COMES THE SUN** reaches a top speed of 17.5 knots and cruises comfortably at 13.5 knots, with a transoceanic range of up to 10,000 nautical miles. Quantum Zero Speed stabilizers ensure comfort both underway and at anchor.

As the largest yacht ever built by **Amels**, **HERE COMES THE SUN** is a rare opportunity to acquire a world-class superyacht that seamlessly combines volume, engineering, and award-winning design into a vessel built for long-range luxury cruising.

[see more information about M/Y HERE COMES THE SUN at www.nauyachts.com](http://www.nauyachts.com)

SPECIFICATION

SHIPYARD, MODEL	Amels 89M
BUILT	2017
LENGTH	89 m
WATERLINE LENGTH	81.71 m
HULL CONFIGURATION	DISPLACEMENT
BEAM	15.61 m
RANGE	7110
DRAFT	3.95 m
GROSS TONNAGE	2955 GT
YACHT CLASS	LLOYD'S
CABINS	10+14
MASTER CABIN	UPPER DECK
GUESTS	20
BERTHS	20+28
CREW	28
HEADS	15+14

EXTERIOR DESIGN	TIM HEYWOOD DESIGN
INTERIOR DESIGN	WINCH DESIGN
HULL	STEEL
SUPERSTRUCTURE	ALUMINIUM
ENGINES	2 x Caterpillar 3516 C-TA 3000 h.p.
TYPE OF DRIVE	SHAFT LINE
ENGINE HOURS	N/A
MAXIMUM SPEED	17.5 kn
CRUISING SPEED	13.5 kn
FUEL CONSUMPTION AT ECONOMICAL SPEED	N/A
FUEL	263360 l
GREY WATER	N/A
BLACK WATER	N/A
FRESH WATER	92870 l
DISPLACEMENT	N/A

[see more information about M/Y HERE COMES THE SUN at www.nauyachts.com](http://www.nauyachts.com)



EXTERIOR AMELS 89M 2017 MY HERE COMES
THE SUN

M/Y HERE COMES THE SUN



EXTERIOR AMELS 89M 2017 MY HERE COMES
THE SUN

M/Y HERE COMES THE SUN



EXTERIOR AMELS 89M 2017 MY HERE COMES
THE SUN

M/Y HERE COMES THE SUN



EXTERIOR AMELS 89M 2017 MY HERE COMES
THE SUN

M/Y HERE COMES THE SUN



EXTERIOR AMELS 89M 2017 MY HERE COMES
THE SUN

M/Y HERE COMES THE SUN



EXTERIOR AMELS 89M 2017 MY HERE COMES
THE SUN

M/Y HERE COMES THE SUN



HELIPAD

M/Y HERE COMES THE SUN



AFT AREA

M/Y HERE COMES THE SUN



AFT MAIN DECK LOUNGE AREA

M/Y HERE COMES THE SUN



AFT MAIN DECK LOUNGE AREA

M/Y HERE COMES THE SUN



STARBOARD

M/Y HERE COMES THE SUN



AFT UPPER DECK DINING AREA

M/Y HERE COMES THE SUN



AFT UPPER DECK DINING AREA

M/Y HERE COMES THE SUN



AFT UPPER DECK LOUNGE AREA

M/Y HERE COMES THE SUN



BOW LOUNGE AREA

M/Y HERE COMES THE SUN



BOW LOUNGE AREA

M/Y HERE COMES THE SUN



BRIDGEDECK LOUNGE AREA

M/Y HERE COMES THE SUN



SUNDECK LOUNGE AREA

M/Y HERE COMES THE SUN



SUNDECK LOUNGE AREA

M/Y HERE COMES THE SUN



MAIN SALON DINING AREA

M/Y HERE COMES THE SUN



MAIN SALON LOUNGE AREA

M/Y HERE COMES THE SUN



MAIN SALON LOUNGE AREA

M/Y HERE COMES THE SUN



CINEMA

M/Y HERE COMES THE SUN



VIP CABIN

M/Y HERE COMES THE SUN



VIP CABIN

M/Y HERE COMES THE SUN



MASTER CABIN

M/Y HERE COMES THE SUN



MASTER CABIN LOUNGE AREA

M/Y HERE COMES THE SUN



MASTER BATHROOM

M/Y HERE COMES THE SUN



MASTER BATHROOM

M/Y HERE COMES THE SUN



OFFICE IN THE MASTER CABIN

M/Y HERE COMES THE SUN



BRIDGEDECK SALON

M/Y HERE COMES THE SUN



VIP CABIN

M/Y HERE COMES THE SUN



VIP BATHROOM

M/Y HERE COMES THE SUN



MAIN HELM STATION

M/Y HERE COMES THE SUN



SUNDECK GYM AREA

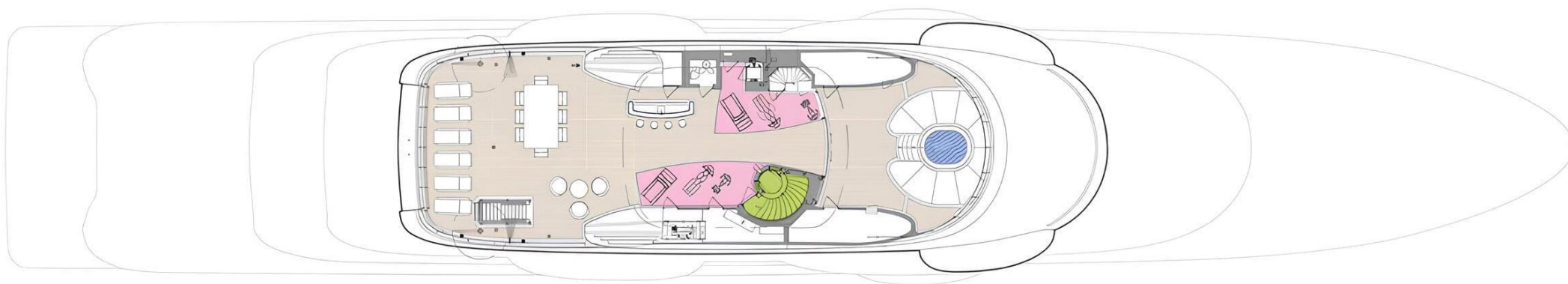
M/Y HERE COMES THE SUN



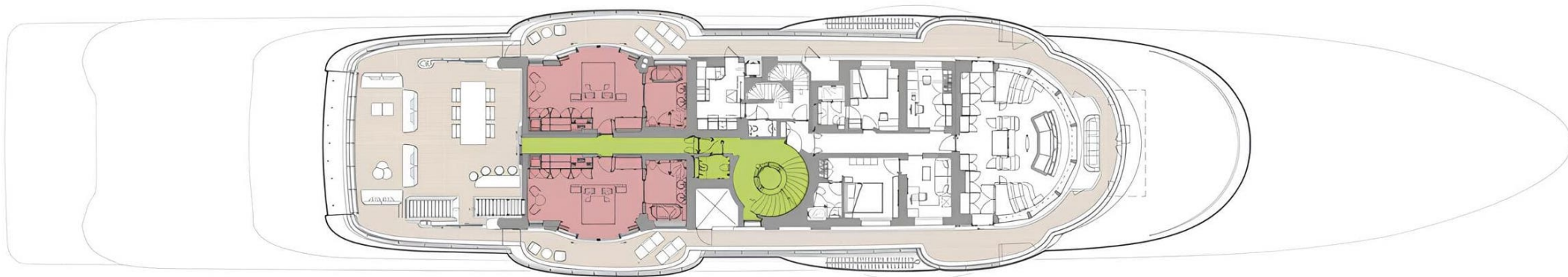
GALLEY

M/Y HERE COMES THE SUN

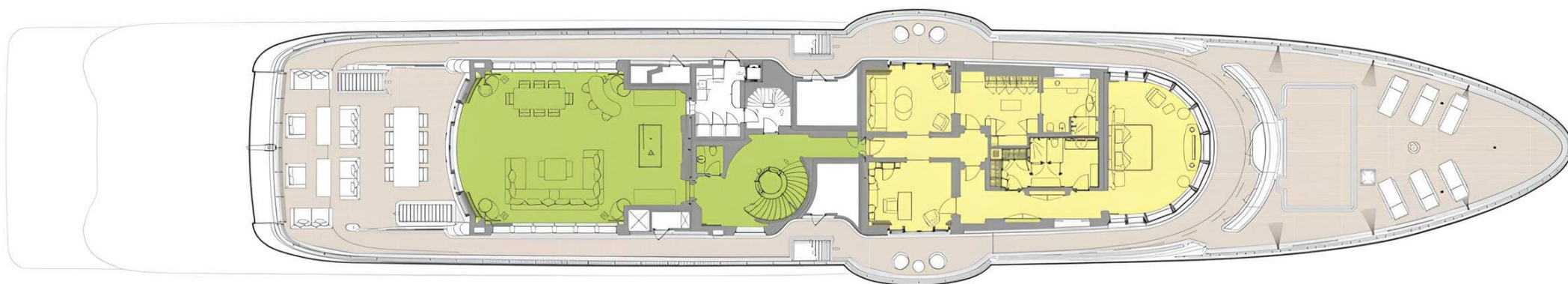
General Arrangement



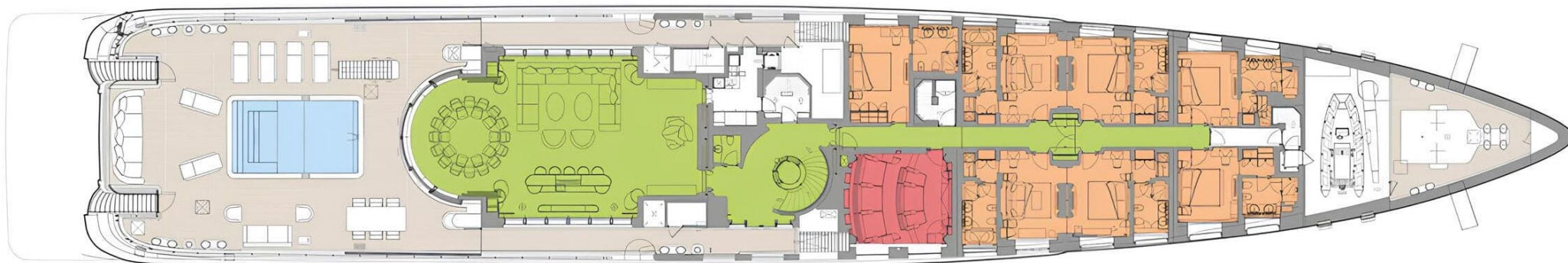
SUNDECK



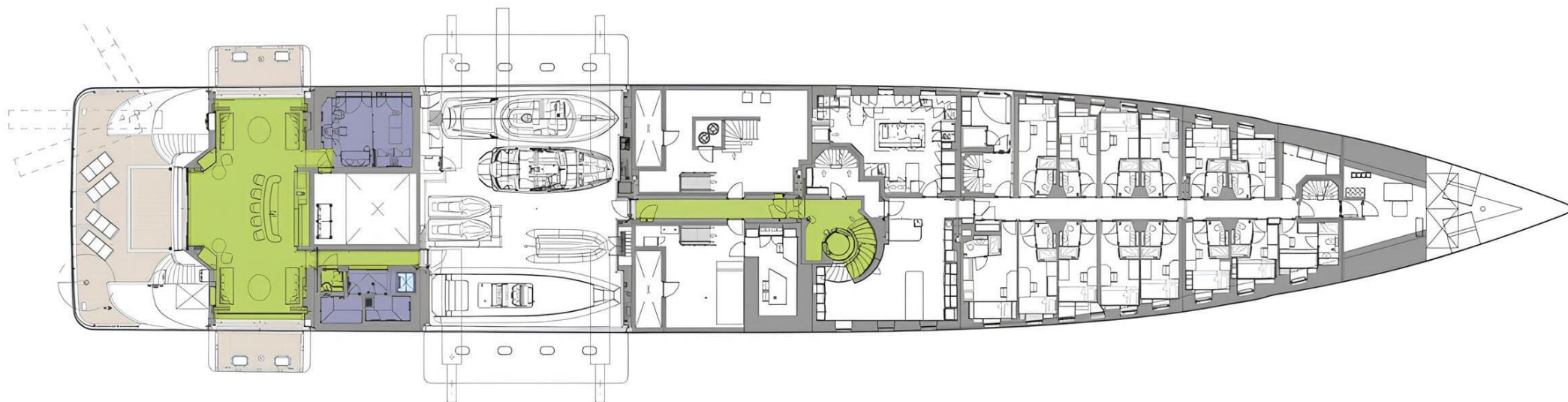
BRIDGE DECK



UPPER DECK



MAIN DECK




LOWER DECK



KIRILL KUATOV

+377 607 93 15 20

+39 333 576 44 44

 [Send e-mail](#)

 WhatsApp

 Telegram

[More information about M/Y HERE COMES THE SUN at www.nauyachts.com](#)

[Watch video](#)