



Brokerage

NAU
YACHTS

SECRET LOVE

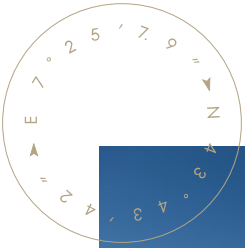
MOTOR YACHT AMELS 36.5M 1990

€4,200,000

FLAG - MARSHALL ISLANDS

MOTOR YACHT

SECRET LOVE



SECRET LOVE is a 36.5-metre motor yacht built by the renowned Dutch shipyard **Amels** and launched in 1990. Carefully maintained since delivery and primarily used by her original owners, she presents in excellent condition, retaining much of her timeless styling and original craftsmanship. Built to the high standards of Northern European shipbuilding, she is known for her sturdy construction, exceptional sea-keeping, and long-range cruising capability.

Her interior, crafted by Struik & Hamerslag, features refined materials and elegant detailing, with light bird's-eye maple wood and coordinated textiles creating a warm, classic ambiance. Accommodation is provided for up to eight guests across four staterooms, including a full-beam master and VIP suite, plus two twin cabins — each with its own en suite marble bathroom. The crew of up to eight is housed in a separate area, ensuring privacy and service efficiency.

Outdoor spaces are designed for relaxed open-air living. The aft deck offers a generous area for al fresco dining and entertaining, while the sundeck features a Jacuzzi, bar, and panoramic dining space. Powered by twin 680 hp Caterpillar diesel engines, **SECRET LOVE** cruises comfortably at 11 knots and boasts a transatlantic range of up to 4,000 nautical miles. Koop Nautic stabilizers enhance onboard comfort underway and at anchor.

With a proven cruising record, classic **Amels** pedigree, and enduring aesthetic appeal, **SECRET LOVE** represents a rare opportunity to acquire a yacht that blends heritage, reliability, and timeless elegance in a well-preserved package.

[see more information about M/Y SECRET LOVE at www.nauyachts.com](http://www.nauyachts.com)

SPECIFICATION

SHIPYARD, MODEL	Amels 36M
BUILT	1990
LENGTH	36.5 m
WATERLINE LENGTH	34.21 m
HULL CONFIGURATION	DISPLACEMENT
BEAM	7.7 m
RANGE	4000
DRAFT	7.7 m
GROSS TONNAGE	303 GT
YACHT CLASS	LLOYD'S
CABINS	4+3
MASTER CABIN	MAIN DECK
GUESTS	8
BERTHS	8+5
CREW	5
HEADS	5+3

EXTERIOR DESIGN	AMELS
INTERIOR DESIGN	STRUIK AND HAMERSLAG
HULL	STEEL
SUPERSTRUCTURE	ALUMINIUM
ENGINES	2 x Caterpillar 3412 DITA 680 h.p.
TYPE OF DRIVE	SHAFT LINE
ENGINE HOURS	N/A
MAXIMUM SPEED	13 kn
CRUISING SPEED	11 kn
FUEL CONSUMPTION AT ECONOMICAL SPEED	~ 110 l/h
FUEL	42998 l
GREY WATER	N/A
BLACK WATER	N/A
FRESH WATER	9198 l
DISPLACEMENT	N/A

[see more information about M/Y SECRET LOVE at www.nauyachts.com](http://www.nauyachts.com)



EXTERIOR AMELS YACHTS 36M 1990 MY
SECRET LOVE

M/Y SECRET LOVE



EXTERIOR AMELS YACHTS 36M 1990 MY
SECRET LOVE

M/Y SECRET LOVE



SUNDECK

M/Y SECRET LOVE



BOW AREA

M/Y SECRET LOVE



AFT AREA

M/Y SECRET LOVE



AFT MAIN DECK DINING AREA

M/Y SECRET LOVE



AFT UPPER DECK LOUNGE AREA

M/Y SECRET LOVE



AFT UPPER DECK DINING AREA

M/Y SECRET LOVE



SUNDECK LOUNGE AREA

M/Y SECRET LOVE



MAIN SALON LOUNGE AREA

M/Y SECRET LOVE



MAIN SALON LOUNGE AREA

M/Y SECRET LOVE



MAIN SALON LOUNGE AREA

M/Y SECRET LOVE



MAIN SALON DINING AREA

M/Y SECRET LOVE



MASTER CABIN

M/Y SECRET LOVE



MASTER CABIN

M/Y SECRET LOVE



MASTER CABIN DRESSING ROOM

M/Y SECRET LOVE



MASTER BATHROOM

M/Y SECRET LOVE



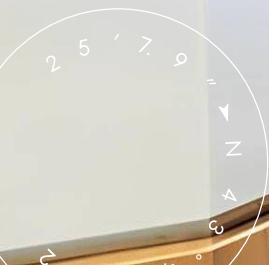
VIP CABIN

M/Y SECRET LOVE



VIP CABIN

M/Y SECRET LOVE



VIP BATHROOM

M/Y SECRET LOVE



GUEST CABIN

M/Y SECRET LOVE



GUEST CABIN

M/Y SECRET LOVE



GUEST CABIN

M/Y SECRET LOVE



GUEST BATHROOM

M/Y SECRET LOVE

GUEST BATHROOM

M/Y SECRET LOVE



MAIN HELM STATION

M/Y SECRET LOVE



GALLEY

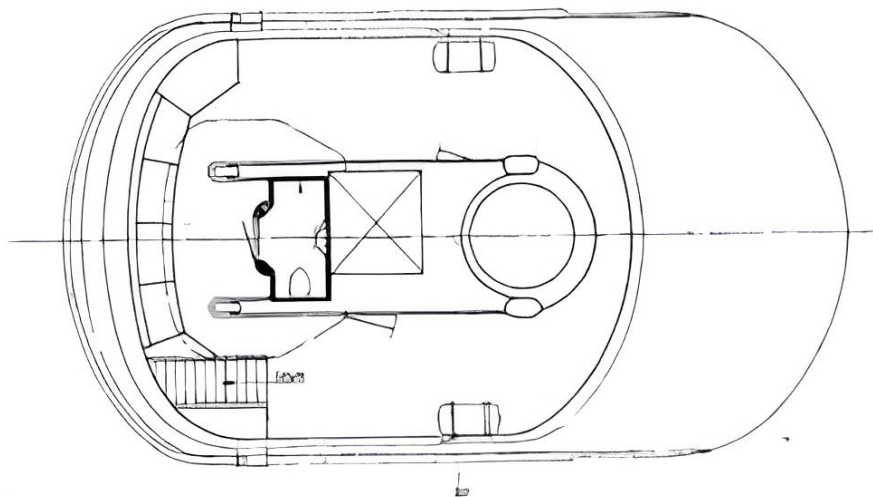
M/Y SECRET LOVE



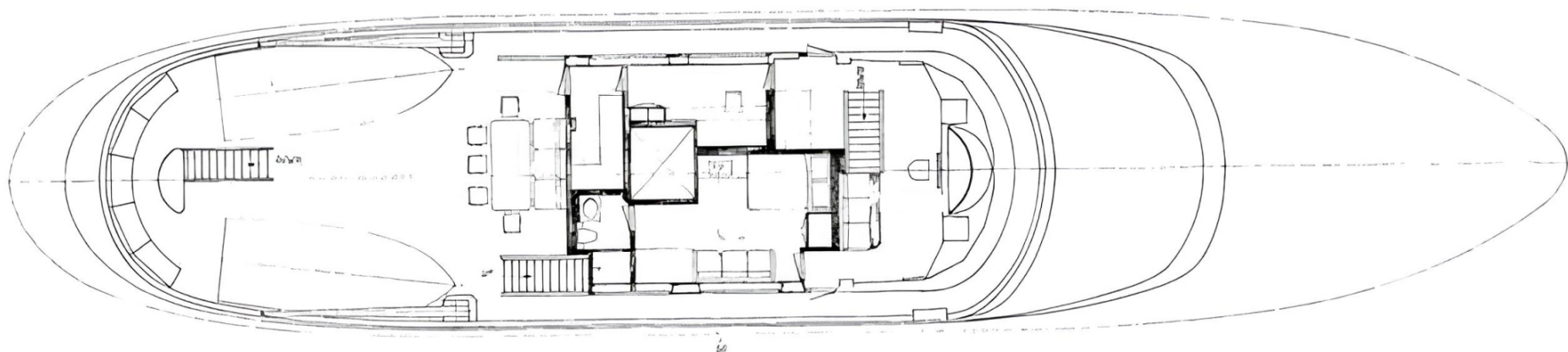
GALLEY

M/Y SECRET LOVE

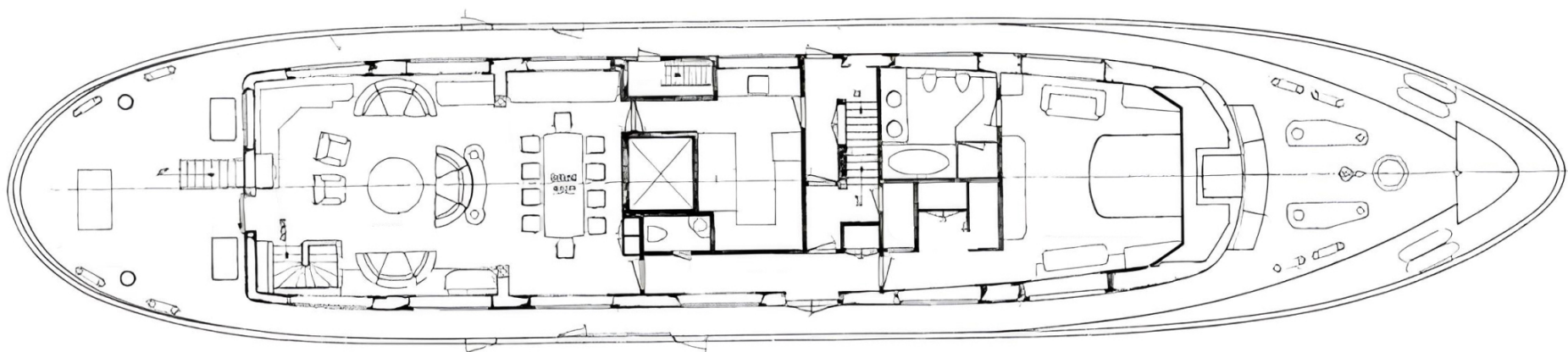
General Arrangement



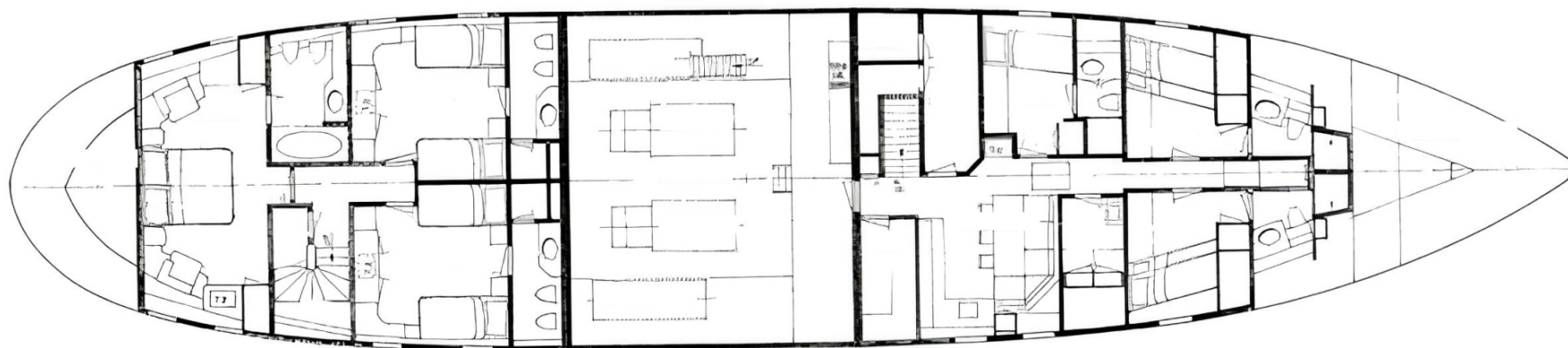
SUNDECK



UPPER DECK



MAIN DECK



LOWER DECK



KIRILL KUATOV

+377 607 93 15 20

+39 333 576 44 44

 [Send e-mail](#)

 WhatsApp

 Telegram