



New Build

NAU
YACHTS

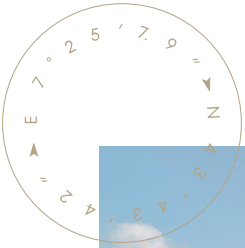
112' DOLCEVITA SUPER

MOTOR YACHT RIVA 34.37M 2027

FLAG -

MOTOR YACHT

112' DOLCEVITA SUPER



Riva 112' Dolcevita Super represents the next evolution of the iconic flybridge series from the renowned Italian shipyard **Riva**. This 34.37-metre yacht, launched in July 2025 in La Spezia, blends the unmistakable Riva aesthetic with enhanced architecture, expanded volumes, and a closer connection to the sea.

The exterior design, penned by **Officina Italiana Design** under Mauro Micheli and Sergio Beretta, evolves the brand's signature look—sleek, harmonious, and undeniably elegant. A 35-square-metre beach club with fold-out terraces and a low-set swim platform offers effortless access to the water, while directly above, a 24-square-metre cockpit lounge features freestanding furniture and plush seating for relaxed outdoor living. At the bow, a C-shaped sofa and spacious sunpad area—with optional Jacuzzi—invite panoramic relaxation.

The flybridge is equipped with a bar, TV lounge, and modular furnishings that can adapt to various uses, from open-air dining to sunset lounging. Inside, the main saloon offers two layout options: a formal dining area aft and lounge amidships, or vice versa. The full-beam owner's suite benefits from enlarged windows and a refined new materials palette—glossy rosewood, embossed leather, and polished accents. Below deck, four VIP guest cabins each feature private en suite bathrooms and luxurious detailing.

Engineering refinements further elevate the onboard experience. The engine room is soundproofed and isolated from guest areas, while crew quarters are laid out for operational efficiency and discretion. Powered by twin MTU 16V 2000 M96L engines, the yacht reaches a top speed of 25.5 knots and cruises comfortably at 23 knots, with a range of up to 430 nautical miles. An alternative propulsion package with MTU 16V 2000 M97L engines and SCR system is available to meet stricter emission standards.

Stabilization is provided by a combination of zero-speed fins, Humphree interceptors, and optional Seakeeper gyros. The yacht can be controlled from one of three helm configurations, including a flagship layout with dual 49-inch Boening displays, as featured on the series' first hull.

Making its debut at the 2025 Cannes Yachting Festival, **Riva 112' Dolcevita Super** redefines the flybridge experience—delivering premium comfort, bold Italian design, and thrilling performance in equal measure.

[see more information about M/Y 112' Dolcevita Super at www.nauyachts.com](http://www.nauyachts.com)

SPECIFICATION

SHIPYARD, MODEL	Riva 112' Dolcevit Super
DELIVERY AT THE SHIPYARD	2027
LENGTH	34.37 m
WATERLINE LENGTH	29.15 m
HULL CONFIGURATION	PLANING
BEAM	7.27 m
RANGE	430
DRAFT	2.05 m
GROSS TONNAGE	230 GT
YACHT CLASS	N/A
CABINS	5+3
MASTER CABIN	MAIN DECK
GUESTS	10
BERTHS	10+5
CREW	5
HEADS	6+3

EXTERIOR DESIGN	OFFICINA ITALIANA DESIGN
INTERIOR DESIGN	OFFICINA ITALIANA DESIGN
HULL	GRP
SUPERSTRUCTURE	GRP
ENGINES	2 x MTU 16V 2000 M96L 2638 h.p.
TYPE OF DRIVE	SHAFT LINE
ENGINE HOURS	N/A
MAXIMUM SPEED	25.5 kn
CRUISING SPEED	23 kn
FUEL CONSUMPTION AT ECONOMICAL SPEED	N/A
FUEL	15300 l
GREY WATER	N/A
BLACK WATER	N/A
FRESH WATER	3000 l
DISPLACEMENT	126

[see more information about M/Y 112' Dolcevit Super at www.nauyachts.com](http://www.nauyachts.com)



EXTERIOR 112' DOLCEVITA SUPER PROJECT

M/Y 112' DOLCEVITA SUPER



EXTERIOR 112' DOLCEVITA SUPER PROJECT

M/Y 112' DOLCEVITA SUPER



EXTERIOR 112' DOLCEVITA SUPER PROJECT

M/Y 112' DOLCEVITA SUPER



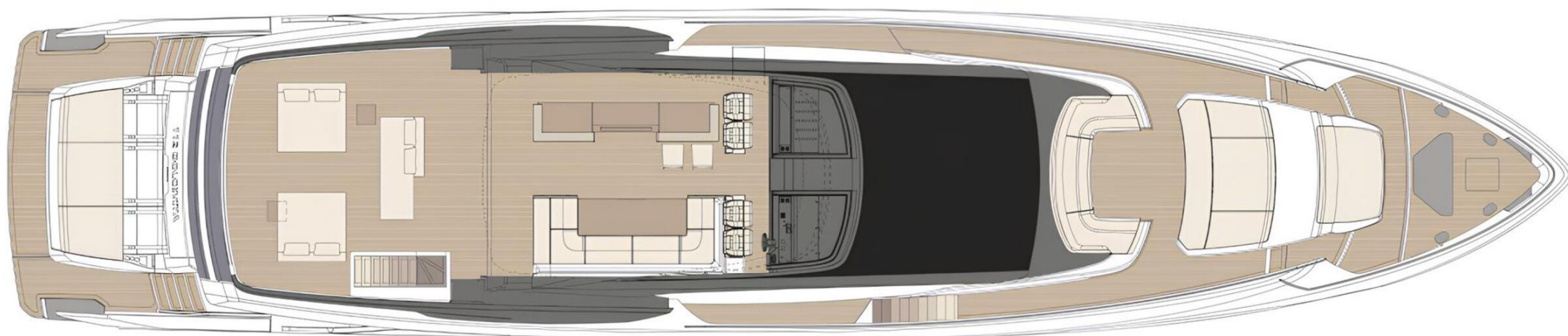
EXTERIOR 112' DOLCEVITA SUPER PROJECT

M/Y 112' DOLCEVITA SUPER

General Arrangement



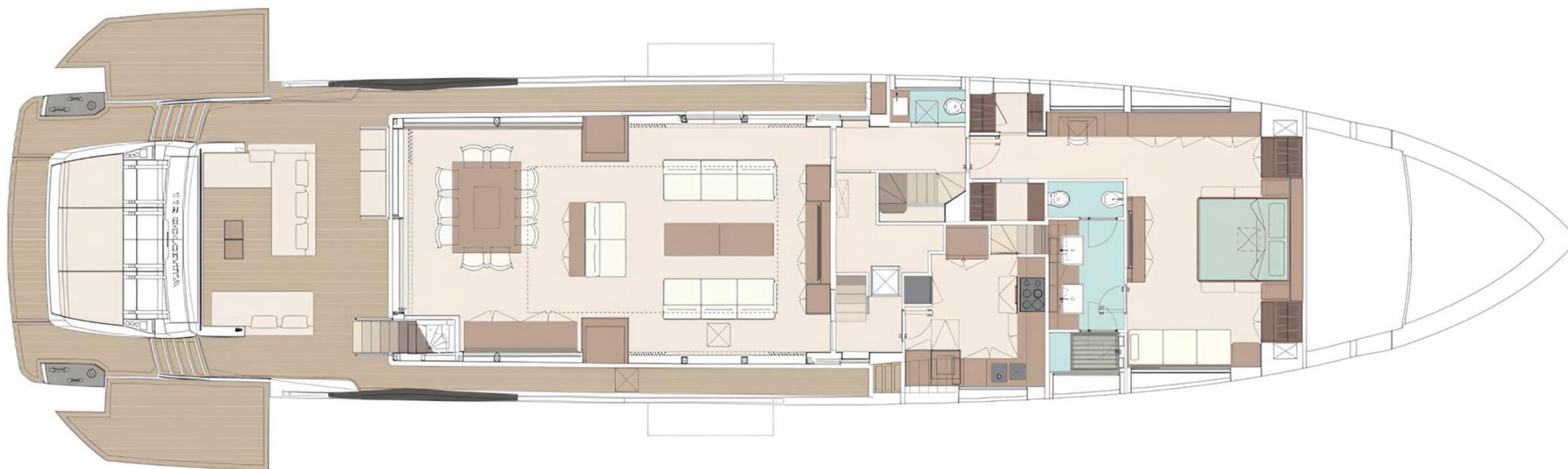
PROFILE



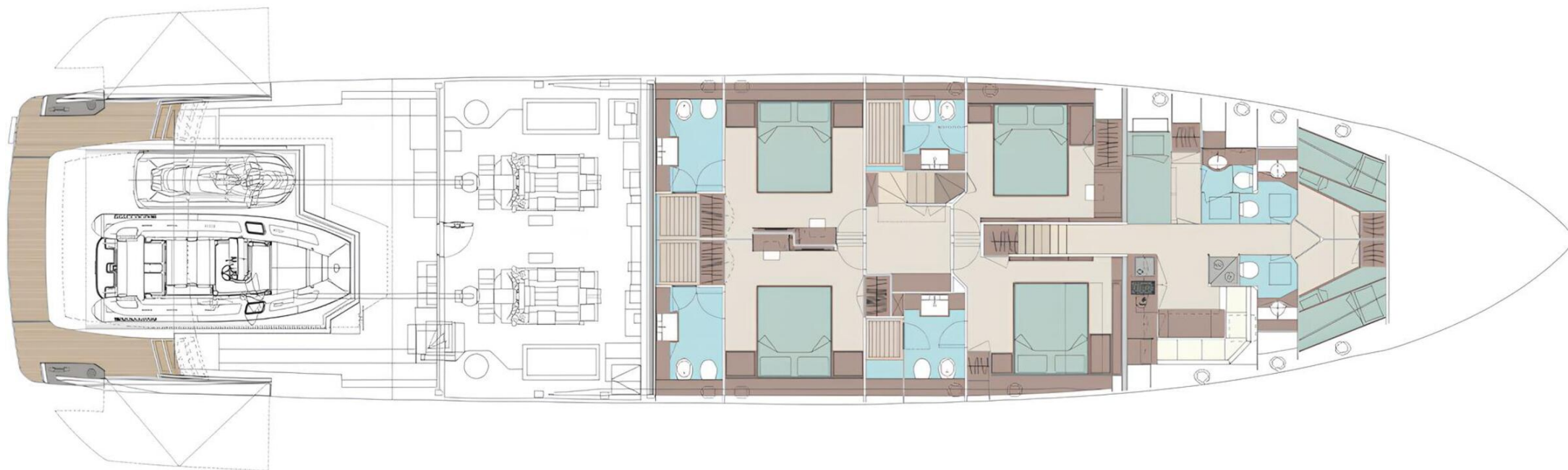
FLYBRIDGE



RAISED PILOTHOUSE



MAIN DECK



LOWER DECK



KIRILL KUATOV

+377 607 93 15 20

+39 333 576 44 44

 [Send e-mail](#)

 WhatsApp

 Telegram