



New Build

NAU
YACHTS

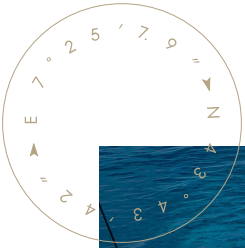
SPORTIVO 120

MOTOR YACHT ISA YACHTS 36.45M 2027

FLAG -

MOTOR YACHT

SPORTIVO 120



ISA Sportivo 120 is a 36.45-metre motor yacht that embodies a bold sporting spirit within a refined architectural framework. Designed by **Enrico Gobbi – Team for Design**, she captures the visual identity of the series' flagship while offering a more compact yet equally impactful format. Constructed in composite with carbon fibre elements, the yacht benefits from reduced weight, high performance, and precise handling.

Accommodation is provided for eight guests in four en suite cabins on the lower deck, arranged to ensure privacy and comfort on extended cruises. The crew of three is housed in two separate cabins, allowing discreet and professional service. Outdoor spaces are designed for both relaxation and entertainment. At the bow, a Jacuzzi offers panoramic views of the sea. The versatile flybridge caters to different lifestyles - from sunbathing to al fresco dining.

Powered by three MTU 16V2000M96L engines delivering 1,939 kW each, **ISA Sportivo 120** reaches a top speed of 36 knots and cruises efficiently at 30 knots. At a reduced speed of 12 knots, she offers a range of 550 nautical miles. With a shallow draft of just 1.52 metres, she can access anchorages and bays off-limits to larger yachts. With a beam of 7.5 metres and gross tonnage of 235 GT, this sleek and aerodynamic yacht delivers generous interior volume without compromising on her dynamic silhouette. **ISA Sportivo 120** is a modern expression of performance yachting - tailored for owners who value not just style and comfort, but speed, agility, and the sheer joy of the ride.

[see more information about M/Y SPORTIVO 120 at www.nauyachts.com](http://www.nauyachts.com)

SPECIFICATION

SHIPYARD, MODEL	ISA Yachts SPORTIVO 120
DELIVERY AT THE SHIPYARD	2027
LENGTH	36.45 m
WATERLINE LENGTH	30 m
HULL CONFIGURATION	PLANING
BEAM	7.5 m
RANGE	550
DRAFT	1.52 m
GROSS TONNAGE	235 GT
YACHT CLASS	RINA
CABINS	4+2
MASTER CABIN	LOWER DECK
GUESTS	8
BERTHS	8+3
CREW	3
HEADS	5+2

EXTERIOR DESIGN	ENRICO GOBBI – TEAM FOR DESIGN
INTERIOR DESIGN	ENRICO GOBBI – TEAM FOR DESIGN
HULL	GRP
SUPERSTRUCTURE	GRP
ENGINES	3 X MTU 16V2000M96L 2600 h.p.
TYPE OF DRIVE	SHAFT LINE
ENGINE HOURS	N/A
MAXIMUM SPEED	36 kn
CRUISING SPEED	30 kn
FUEL CONSUMPTION AT ECONOMICAL SPEED	N/A
FUEL	22000 l
GREY WATER	2300 l
BLACK WATER	2300 l
FRESH WATER	4000 l
DISPLACEMENT	173

[see more information about M/Y SPORTIVO 120 at www.nauyachts.com](http://www.nauyachts.com)



EXTERIOR ISA SPORTIVO 120 2027

M/Y SPORTIVO 120



EXTERIOR ISA SPORTIVO 120 2027

M/Y SPORTIVO 120



EXTERIOR ISA SPORTIVO 120 2027

M/Y SPORTIVO 120



EXTERIOR ISA SPORTIVO 120 2027

M/Y SPORTIVO 120



EXTERIOR ISA SPORTIVO 120 2027

M/Y SPORTIVO 120



EXTERIOR ISA SPORTIVO 120 2027

M/Y SPORTIVO 120



EXTERIOR ISA SPORTIVO 120 2027

M/Y SPORTIVO 120



EXTERIOR ISA SPORTIVO 120 2027

M/Y SPORTIVO 120





AFT AREA

M/Y SPORTIVO 120



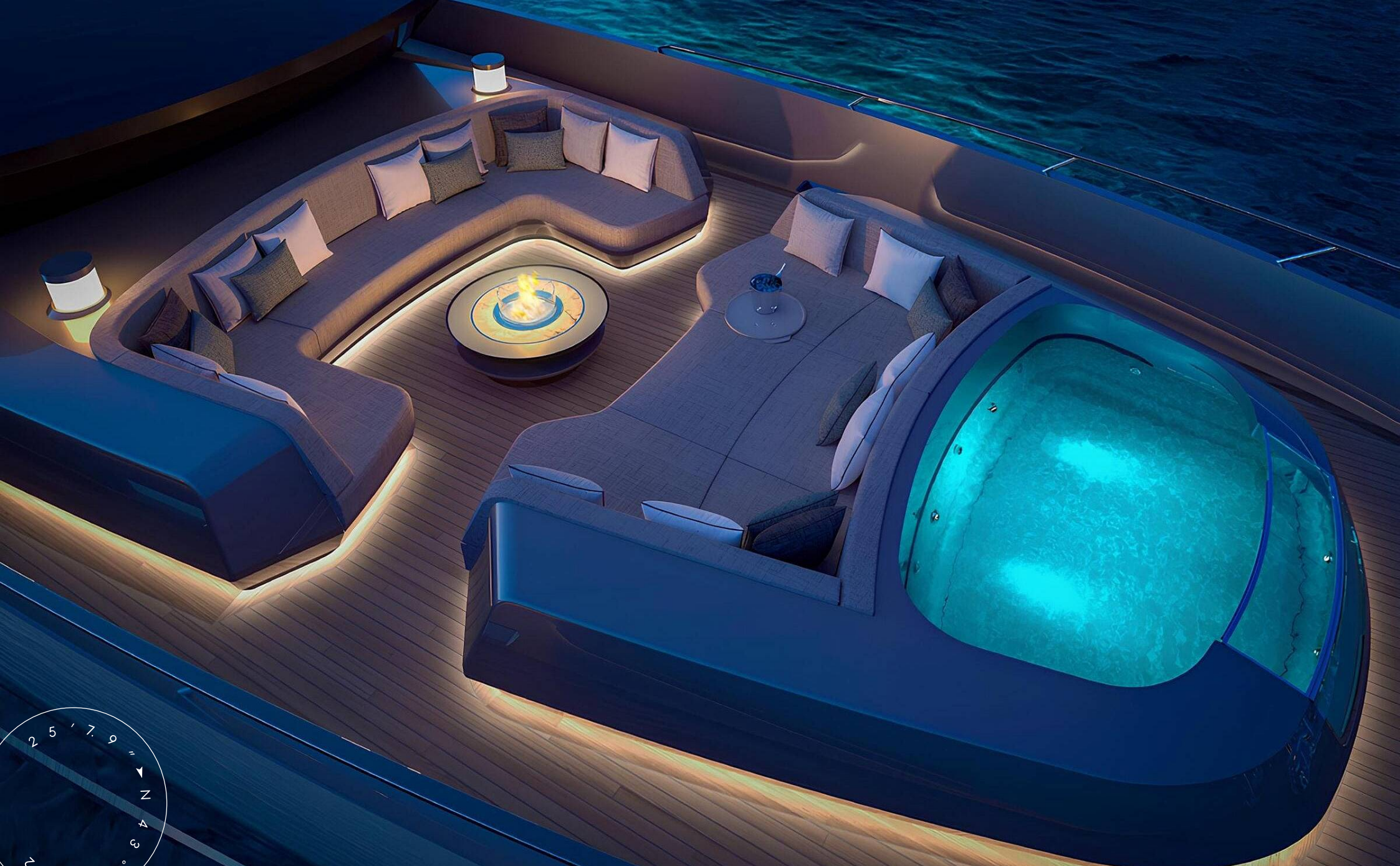
AFT MAIN DECK LOUNGE AREA

M/Y SPORTIVO 120



SUNDECK LOUNGE AREA

M/Y SPORTIVO 120



BOW LOUNGE AREA

M/Y SPORTIVO 120



MAIN SALON LOUNGE AREA

M/Y SPORTIVO 120



MAIN SALON LOUNGE AREA

M/Y SPORTIVO 120



MASTER CABIN

M/Y SPORTIVO 120



MASTER CABIN

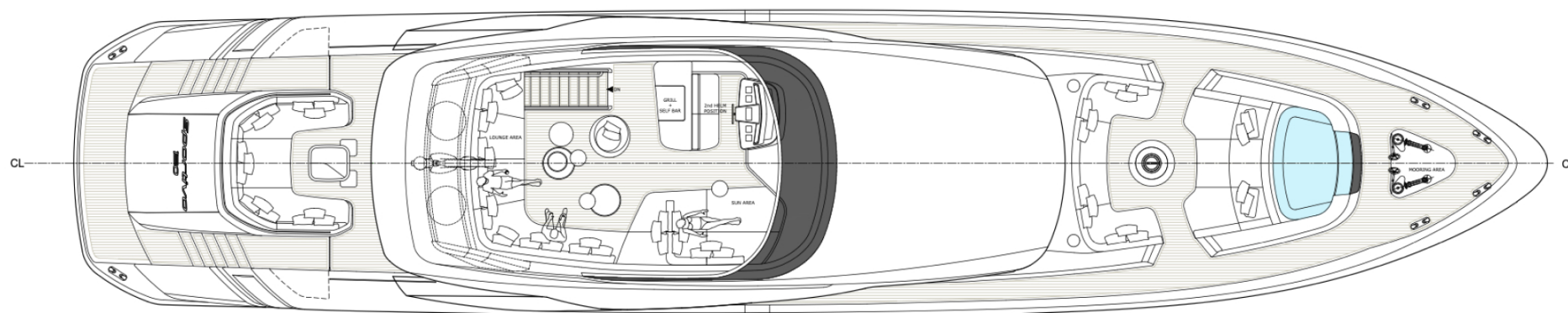
M/Y SPORTIVO 120



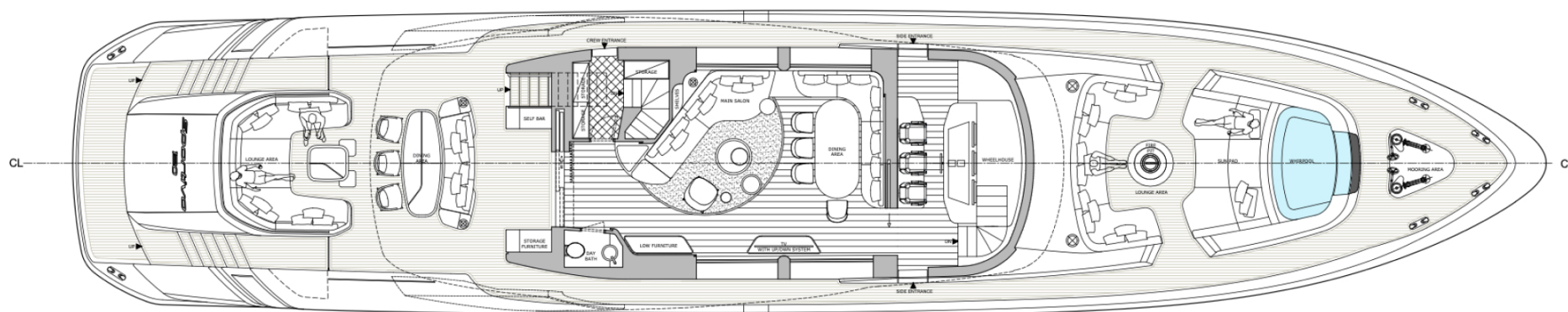
MASTER BATHROOM

M/Y SPORTIVO 120

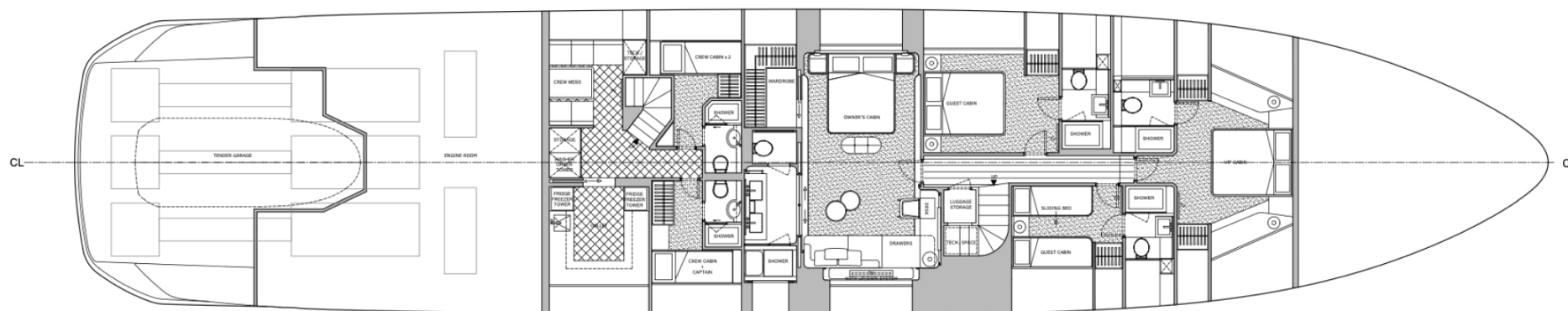
General Arrangement



FLYBRIDGE



MAIN DECK



LOWER DECK



KIRILL KUATOV

+377 607 93 15 20

+39 333 576 44 44

 [Send e-mail](#)

 WhatsApp

 Telegram