



New Build

NAU
YACHTS

VOYAGER 45

MOTOR YACHT ISA YACHTS 45M 2027

FLAG -

MOTOR YACHT

VOYAGER 45



ISA Voyager 45 is a 45-metre expedition yacht designed for long-range cruising and transatlantic voyages, combining autonomy, practicality, and Italian elegance. Created by **Enrico Gobbi – Team for Design**, her silhouette is defined by a forward-angled superstructure that not only gives her a distinctive, dynamic profile but also maximises the usable space of the aft deck.

The aft area features a 4.5-metre infinity pool seamlessly integrated into a versatile lounge zone. This space can accommodate a 6-metre tender and modular furniture, with a concealed davit crane built into the railing structure to maintain clean exterior lines. The steel hull and aluminium superstructure ensure robust construction, with an overall beam of 9.34 metres and a draft of 2.6 metres. The gross tonnage of 445 GT provides ample volume for long stays on board.

Powered by twin Caterpillar C32 ACERT engines, **Voyager 45** cruises comfortably at 12 knots, with a transoceanic range of up to 5,500 nautical miles at 10 knots. Her top speed is 14 knots, making her equally suited for slow exploration and standard cruising itineraries.

The yacht accommodates up to 10 guests across five staterooms, offering generous and flexible living arrangements. The crew quarters house up to 9 crew in five cabins, ensuring smooth operations and a high standard of service throughout extended journeys.

Designed for owners with a passion for exploration, **ISA Voyager 45** delivers the autonomy of a true expedition yacht without compromising on luxury, style, or comfort.

[see more information about M/Y VOYAGER 45 at www.nauyachts.com](http://www.nauyachts.com)

SPECIFICATION

SHIPYARD, MODEL	ISA Yachts VOYAGER 45
DELIVERY AT THE SHIPYARD	2027
LENGTH	45 m
WATERLINE LENGTH	41 m
HULL CONFIGURATION	DISPLACEMENT
BEAM	9.34 m
RANGE	5500
DRAFT	2.6 m
GROSS TONNAGE	455 GT
YACHT CLASS	RINA
CABINS	5+5
MASTER CABIN	MAIN DECK
GUESTS	10
BERTHS	10+9
CREW	9
HEADS	6+5

EXTERIOR DESIGN	ENRICO GOBBI – TEAM FOR DESIGN
INTERIOR DESIGN	ENRICO GOBBI – TEAM FOR DESIGN
HULL	STEEL
SUPERSTRUCTURE	ALUMINIUM
ENGINES	2 x CAT C32 ACERT 1000 h.p.
TYPE OF DRIVE	SHAFT LINE
ENGINE HOURS	N/A
MAXIMUM SPEED	14 kn
CRUISING SPEED	12 kn
FUEL CONSUMPTION AT ECONOMICAL SPEED	N/A
FUEL	60000 l
GREY WATER	3000 l
BLACK WATER	2000 l
FRESH WATER	8500 l
DISPLACEMENT	405

[see more information about M/Y VOYAGER 45 at www.nauyachts.com](http://www.nauyachts.com)



EXTERIOR ISA VOYAGER 45 2027

M/Y VOYAGER 45



EXTERIOR ISA VOYAGER 45 2027

M/Y VOYAGER 45



EXTERIOR ISA VOYAGER 45 2027

M/Y VOYAGER 45



EXTERIOR ISA VOYAGER 45 2027

M/Y VOYAGER 45



EXTERIOR ISA VOYAGER 45 2027

M/Y VOYAGER 45



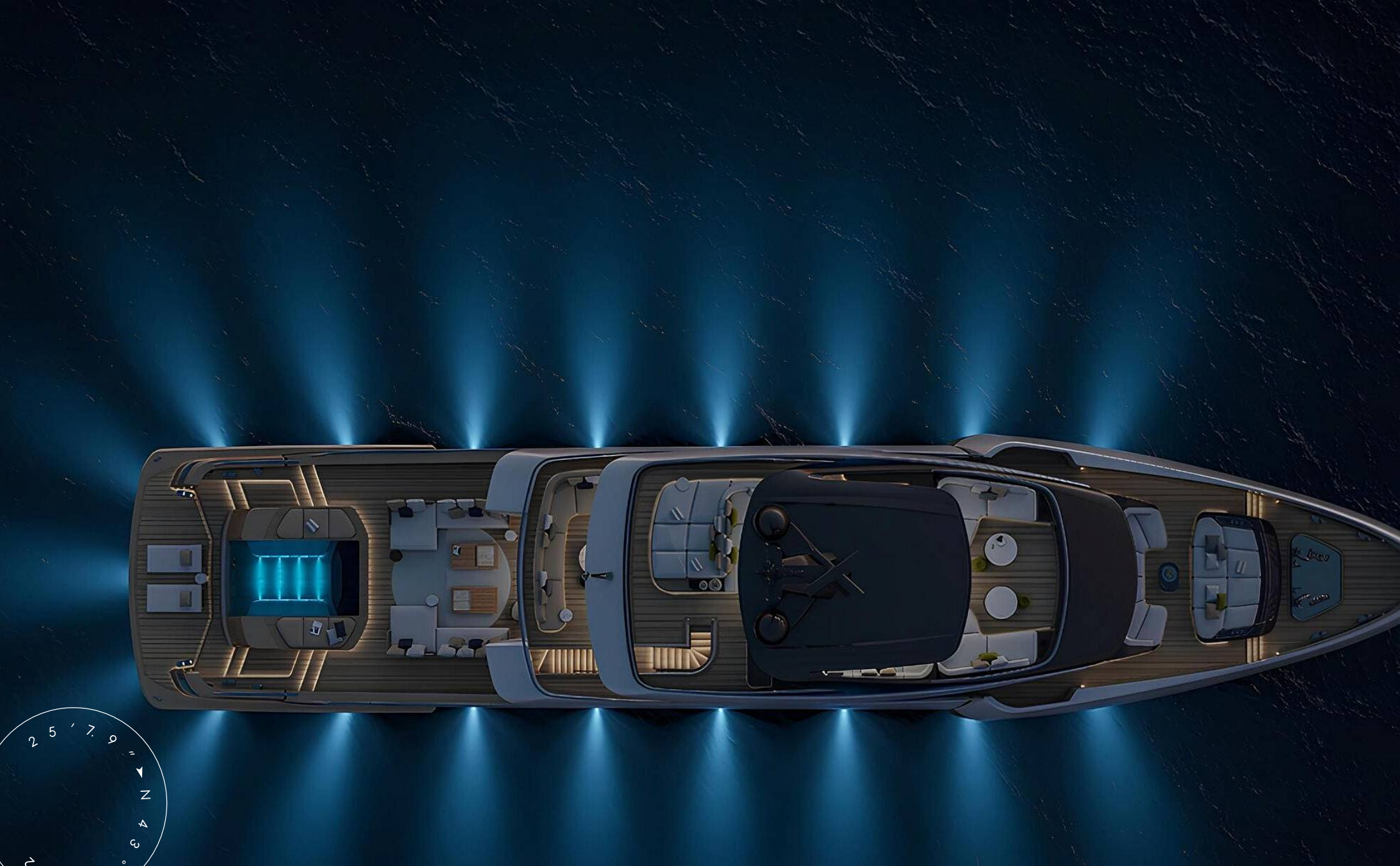
EXTERIOR ISA VOYAGER 45 2027

M/Y VOYAGER 45



EXTERIOR ISA VOYAGER 45 2027

M/Y VOYAGER 45



EXTERIOR ISA VOYAGER 45 2027

M/Y VOYAGER 45



SUNDECK LOUNGE AREA

M/Y VOYAGER 45



SUNDECK DINING AREA

M/Y VOYAGER 45



SUNDECK AFT SUNBATHING AREA

M/Y VOYAGER 45



BOW LOUNGE AREA

M/Y VOYAGER 45



AFT UPPER DECK LOUNGE AREA

M/Y VOYAGER 45



AFT MAIN DECK LOUNGE AREA

M/Y VOYAGER 45



AFT MAIN DECK LOUNGE AREA

M/Y VOYAGER 45



AFT MAIN DECK LOUNGE AREA

M/Y VOYAGER 45



MAIN SALON LOUNGE AREA

M/Y VOYAGER 45



MAIN SALON LOUNGE AREA

M/Y VOYAGER 45



MAIN SALON DINING AREA

M/Y VOYAGER 45



MAIN SALON DINING AREA

M/Y VOYAGER 45



MAIN SALON LOUNGE AREA

M/Y VOYAGER 45



MASTER CABIN

M/Y VOYAGER 45



MASTER CABIN

M/Y VOYAGER 45



MASTER CABIN

M/Y VOYAGER 45



MASTER CABIN LOUNGE AREA

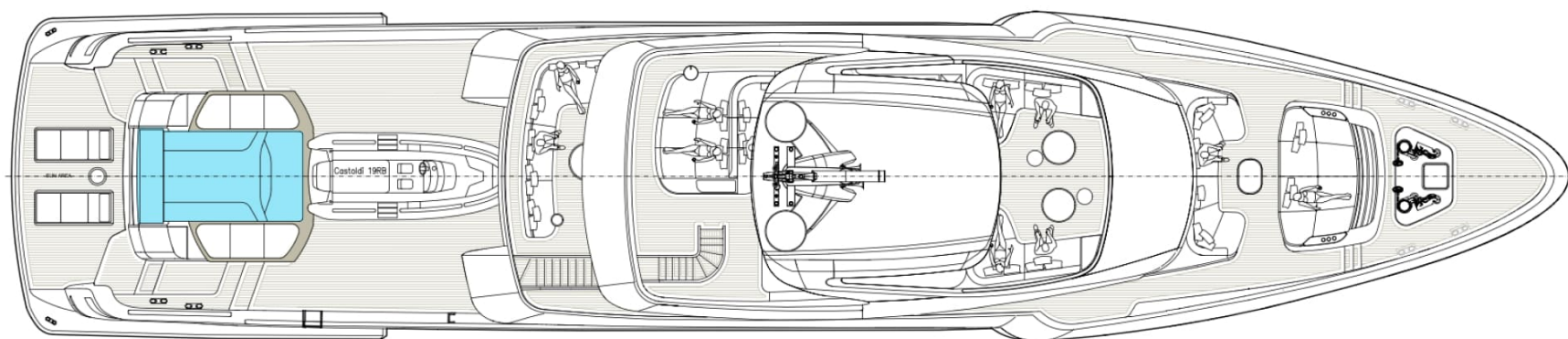
M/Y VOYAGER 45



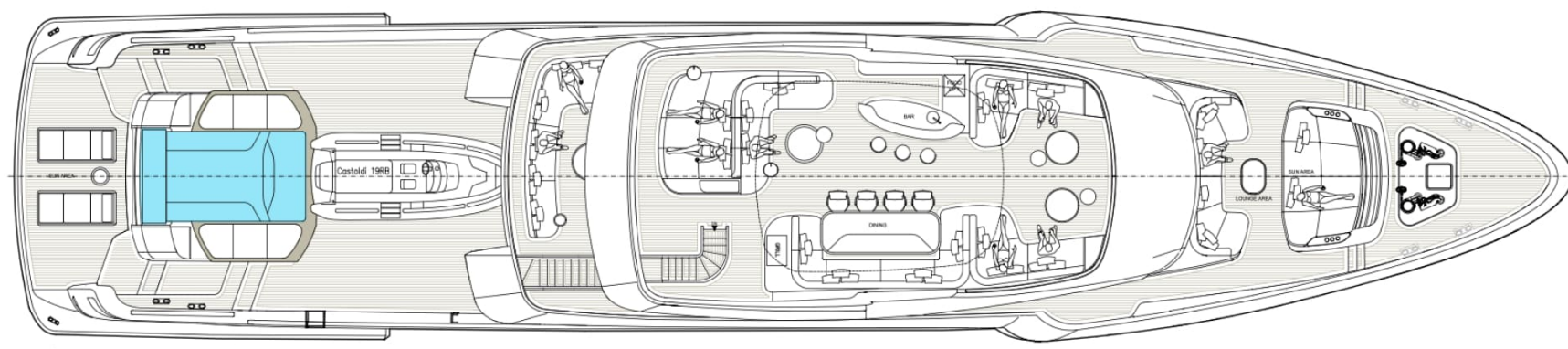
MASTER BATHROOM

M/Y VOYAGER 45

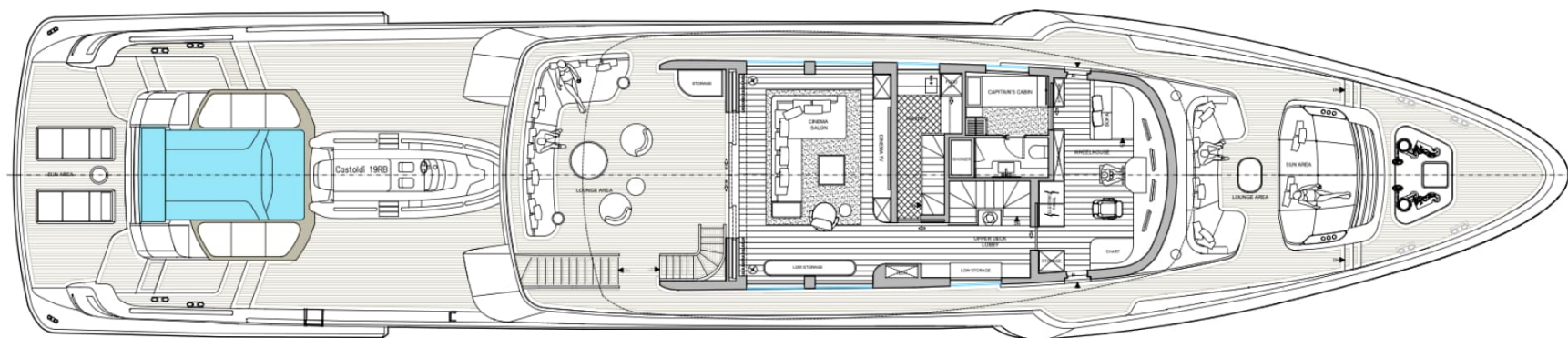
General Arrangement



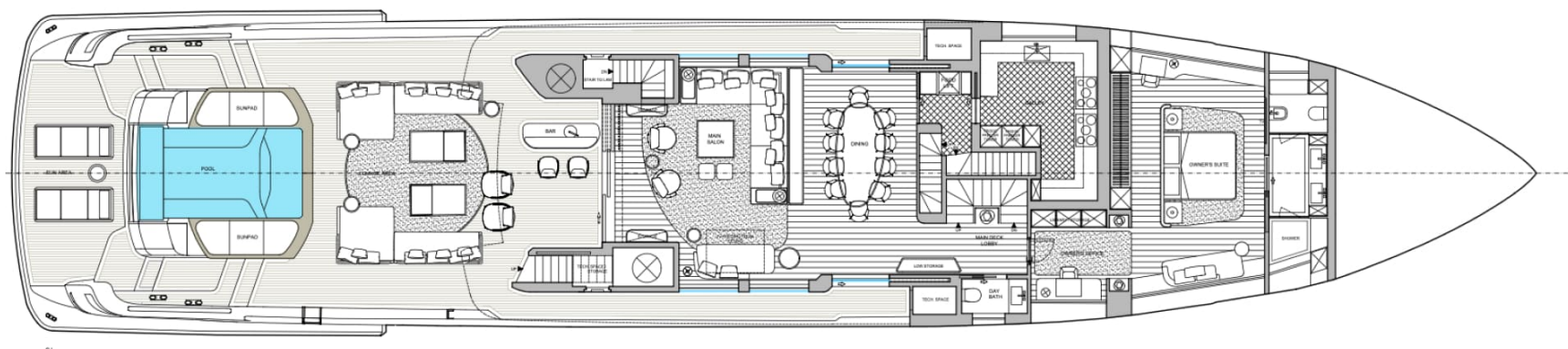
TOP VIEW



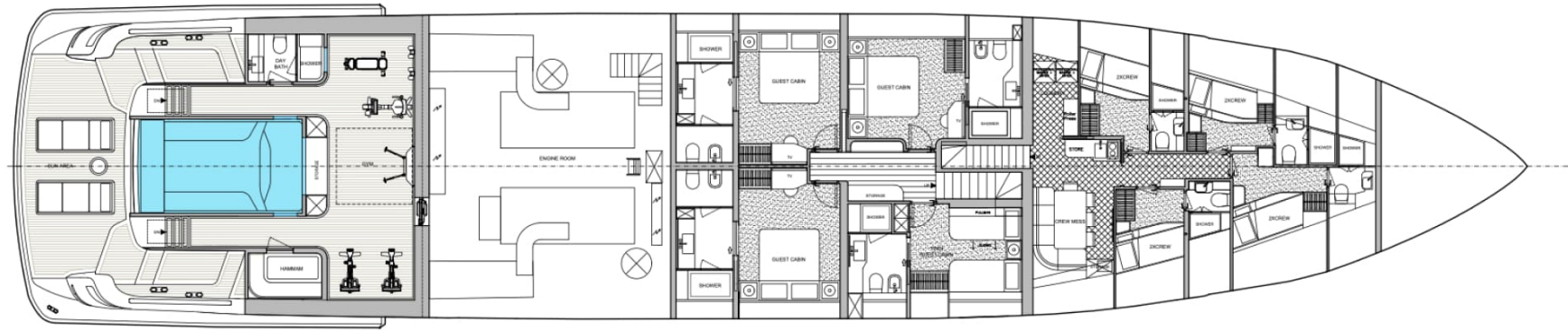
SUNDECK



UPPER DECK



MAIN DECK



LOWER DECK



KIRILL KUATOV

+377 607 93 15 20

+39 333 576 44 44

 [Send e-mail](#)

 WhatsApp

 Telegram

[More information about M/Y VOYAGER 45 at www.nauyachts.com](http://www.nauyachts.com)

[Watch video](#)