



Brokerage

NAU  
YACHTS

LEVANNA

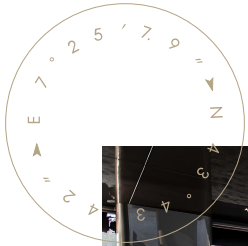
MOTOR YACHT    BERING 23.43M    2022

€3,800,000

FLAG -

MOTOR YACHT

## LEVANNA



**Bering 70 LEVANNA** is a 22.4-metre expedition-style motor yacht, delivered in 2022 by **Bering Yachts** in Turkey. Built with a robust steel hull and aluminium superstructure finished in Alexseal paint, **LEVANNA** is designed for serious passagemaking and extended cruising in open waters.

This model is owner-operator friendly, with systems engineered for low maintenance and high reliability, while still offering premium comfort and craftsmanship. Powered by twin John Deere 4045 AF85 engines (200 hp each) with approximately 1,500 engine hours, she cruises comfortably at 8 knots and reaches a top speed of 10 knots. With a fuel capacity of 7,860 litres, **LEVANNA** has an impressive range of up to 3,000 nautical miles, making her ideal for long-range autonomy.

The interior is arranged to prioritize functionality and comfort for extended stays onboard. Accommodation is provided for 6 guests across 3 cabins, including a full-beam master stateroom. Crew quarters are located separately to ensure smooth onboard operations. The salon, galley, and dining area are finished in a warm, neutral colour palette, creating a relaxed and inviting atmosphere suited to life at sea.

**LEVANNA** is a true long-range explorer yacht, offering a rare balance of durability, comfort, and self-sufficiency in a manageable size. Whether for coastal cruising or transoceanic exploration, she is ready for adventure and presented in excellent condition.

see more information about M/Y LEVANNA at [www.nauyachts.com](http://www.nauyachts.com)

# SPECIFICATION

SHIPYARD, MODEL	Bering 70
BUILT	2022
LENGTH	23.43 m
WATERLINE LENGTH	22.1 m
HULL CONFIGURATION	DISPLACEMENT
BEAM	5.56 m
RANGE	3000
DRAFT	1.32 m
GROSS TONNAGE	74 GT
YACHT CLASS	CE CLASS A
CABINS	3+1
MASTER CABIN	LOWER DECK
GUESTS	6
BERTHS	6+2
CREW	2
HEADS	3+1

EXTERIOR DESIGN	BERING YACHTS
INTERIOR DESIGN	BERING YACHTS
HULL	STEEL
SUPERSTRUCTURE	ALUMINIUM
ENGINES	2 x John Deere 4045 AF85 200 h.p.
TYPE OF DRIVE	SHAFT LINE
ENGINE HOURS	1523 h
MAXIMUM SPEED	10 kn
CRUSING SPEED	8 kn
FUEL CONSUMPTION AT ECONOMICAL SPEED	~ 40 l/h
FUEL	6840 l
GREY WATER	N/A
BLACK WATER	N/A
FRESH WATER	1000 l
DISPLACEMENT	64.8

[see more information about M/Y LEVANNA at www.nauyachts.com](http://www.nauyachts.com)



EXTERIOR BERING 70 2022 MY LEVANNA

M/Y LEVANNA



EXTERIOR BERING 70 2022 MY LEVANNA

M/Y LEVANNA



EXTERIOR BERING 70 2022 MY LEVANNA

M/Y LEVANNA



EXTERIOR BERING 70 2022 MY LEVANNA

M/Y LEVANNA



EXTERIOR BERING 70 2022 MY LEVANNA

M/Y LEVANNA





EXTERIOR BERING 70 2022 MY LEVANNA

M/Y LEVANNA



BOW AREA

M/Y LEVANNA



BOW AREA

M/Y LEVANNA



BOW AREA

M/Y LEVANNA



FLYBRIDGE LOUNGE AREA

M/Y LEVANNA



FLYBRIDGE DINING AREA

M/Y LEVANNA



FLYBRIDGE DINING AREA

M/Y LEVANNA



COCKPIT DINING AREA

M/Y LEVANNA





COCKPIT DINING AREA

M/Y LEVANNA



MAIN SALON LOUNGE AREA

M/Y LEVANNA



MAIN SALON LOUNGE AREA

M/Y LEVANNA



MAIN SALON LOUNGE AREA

M/Y LEVANNA



GALLEY

M/Y LEVANNA



MASTER CABIN

M/Y LEVANNA



MASTER CABIN

M/Y LEVANNA



MASTER CABIN

M/Y LEVANNA





MASTER BATHROOM

M/Y LEVANNA



VIP CABIN

M/Y LEVANNA



VIP CABIN

M/Y LEVANNA



VIP BATHROOM

M/Y LEVANNA



VIP BATHROOM

M/Y LEVANNA



GUEST CABIN

M/Y LEVANNA



GUEST CABIN

M/Y LEVANNA



MAIN HELM STATION

M/Y LEVANNA

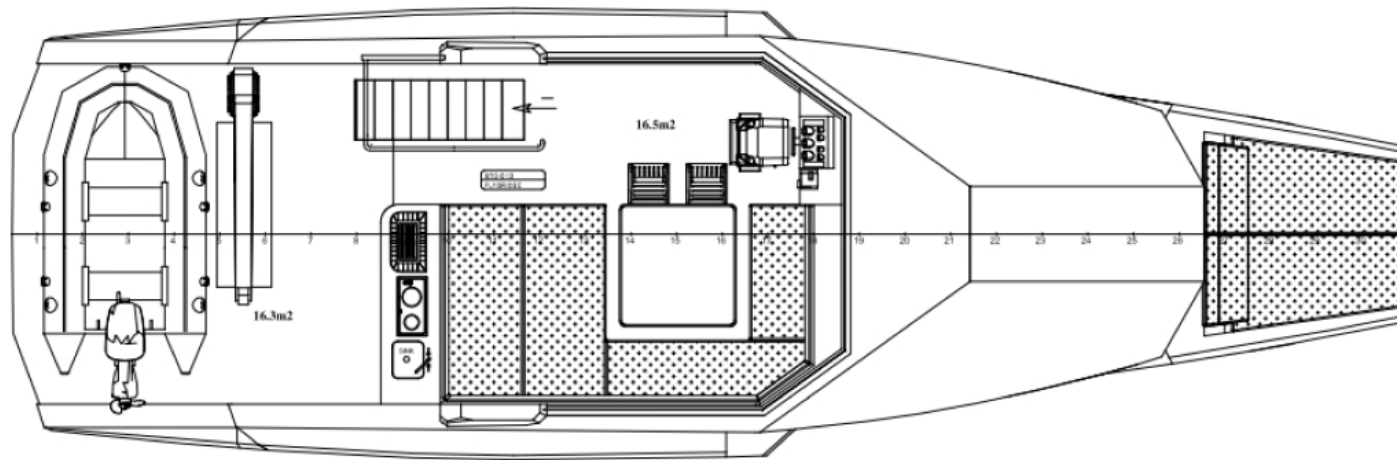


# General Arrangement



---

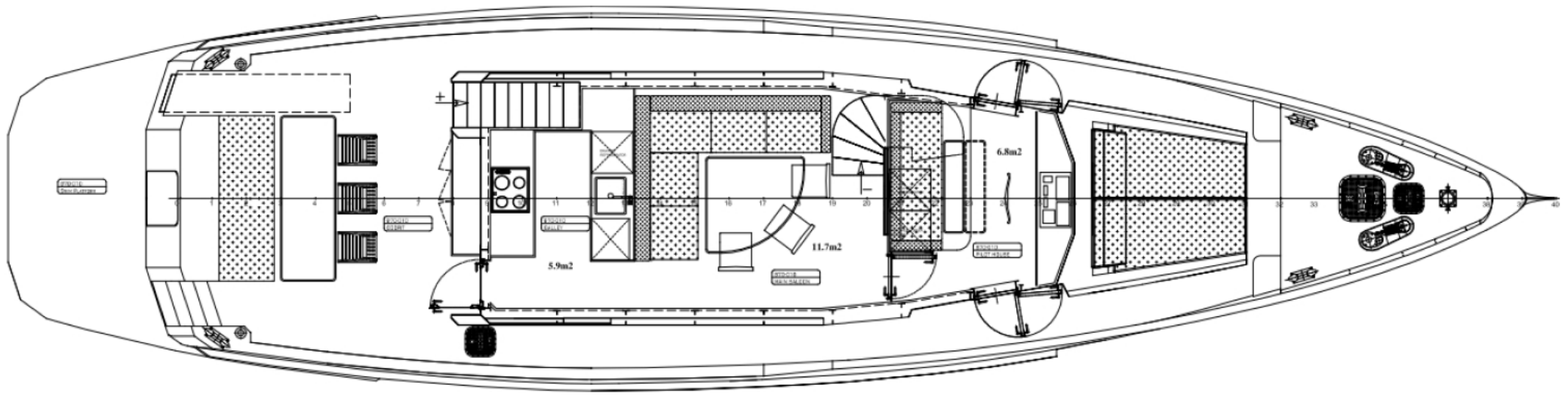
PROFILE



---

---

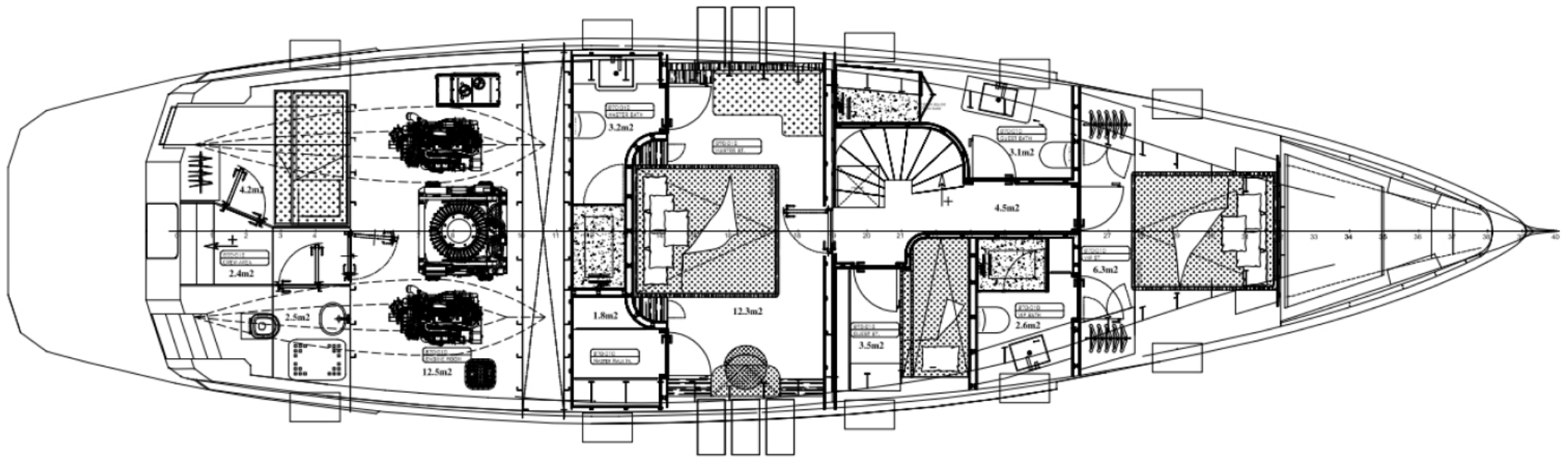
## FLYBRIDGE



---

---

## MAIN DECK



---

---

## LOWER DECK



## KIRILL KUATOV

+377 607 93 15 20

+39 333 576 44 44

[Send e-mail](#)

[WhatsApp](#)

[Telegram](#)

[More information about M/Y LEVANNA at www.nauyachts.com](http://www.nauyachts.com)

[Watch video](#)