



New Build

NAU
YACHTS

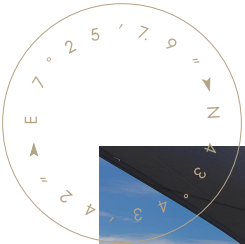
X99 FAST

MOTOR YACHT EXTRA YACHTS BY ISA 30.18M 2026

€10,450,000
FLAG -

MOTOR YACHT

X99 FAST



Extra 99 Fast is a 30-meter planing yacht that masterfully combines high speed, shallow draft, and a functional layout for dynamic cruising experiences. Designed by Guida Design in collaboration with Palumbo Superyachts, the model features a sleek, sporty profile and was created for owners who prioritize performance without compromising on comfort.

Powered by three MAN V12-2000 engines paired with waterjet propulsion, the yacht reaches impressive speeds of up to 44 knots, with a cruising speed around 38 knots. Thanks to her 1.3-meter draft, she is perfectly suited for shallow-water cruising in areas like the Bahamas or the Florida Keys.

Outdoor spaces are optimized for leisure and socializing. The aft beach club features fold-down terraces that dramatically extend the relaxation area at sea level. The flybridge includes sun loungers, a bar, and a secondary helm station. Two jet skis are stored forward, while a tender garage aft accommodates a RIB-style tender.

The interior layout sleeps up to 9 guests in four cabins, including a full-beam master suite, a VIP cabin, and two guest cabins, each with en-suite facilities. Crew accommodation is designed for up to 4 and can be customized for operational flexibility.

Delivery time is approximately 12 months from contract signature. With bold styling, exhilarating performance, and a shallow draft for versatile navigation, the **Extra 99 Fast** is a compelling option for owners seeking a high-performance yacht that doesn't compromise on livability or style.

[see more information about M/Y X99 FAST at www.nauyachts.com](http://www.nauyachts.com)

SPECIFICATION

SHIPYARD, MODEL	Extra Yachts by ISA X99 FAST
BUILT	2026
LENGTH	30.18 m
WATERLINE LENGTH	23.96 m
HULL CONFIGURATION	PLANING
BEAM	7.3 m
RANGE	325
DRAFT	1.3 m
GROSS TONNAGE	161 GT
YACHT CLASS	RINA
CABINS	4+2
MASTER CABIN	LOWER DECK
GUESTS	9
BERTHS	9+4
CREW	4
HEADS	5+2

EXTERIOR DESIGN	PALUMBO SUPERYACHTS & GUIDA DESIGN
INTERIOR DESIGN	PALUMBO SUPERYACHTS
HULL	GRP
SUPERSTRUCTURE	GRP
ENGINES	3 x MAN V12 2000 h.p.
TYPE OF DRIVE	JET
ENGINE HOURS	N/A
MAXIMUM SPEED	44 kn
CRUISING SPEED	38 kn
FUEL CONSUMPTION AT ECONOMICAL SPEED	~ 168 l/h
FUEL	10350 l
GREY WATER	600 l
BLACK WATER	580 l
FRESH WATER	2200 l
DISPLACEMENT	100

[see more information about M/Y X99 FAST at www.nauyachts.com](http://www.nauyachts.com)



EXTERIOR EXTRA YACHTS X99 FAST 2026

M/Y X99 FAST



EXTERIOR EXTRA YACHTS X99 FAST 2026

M/Y X99 FAST



EXTERIOR EXTRA YACHTS X99 FAST 2026

M/Y X99 FAST



COCKPIT SEATING AREA

M/Y X99 FAST



COCKPIT SEATING AREA

M/Y X99 FAST





AFT MAIN DECK FOLDING PLATFORMS

M/Y X99 FAST



AFT MAIN DECK FOLDING PLATFORMS

M/Y X99 FAST



COCKPIT DINING AREA

M/Y X99 FAST



COCKPIT DINING AREA

M/Y X99 FAST



FLYBRIDGE LOUNGE AREA

M/Y X99 FAST



FLYBRIDGE LOUNGE AREA

M/Y X99 FAST



MAIN SALON LOUNGE AREA

M/Y X99 FAST



MAIN SALON LOUNGE AREA

M/Y X99 FAST



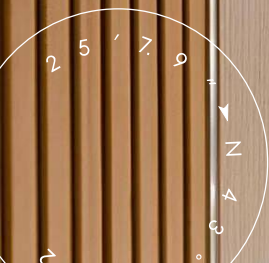
MAIN SALON DINING AREA

M/Y X99 FAST



MAIN HELM STATION

M/Y X99 FAST



STAIRS FROM MD TO LD

M/Y X99 FAST



GUEST CABIN

M/Y X99 FAST



GUEST CABIN

M/Y X99 FAST



GUEST BATHROOM

M/Y X99 FAST



VIP CABIN

M/Y X99 FAST



VIP CABIN

M/Y X99 FAST



VIP BATHROOM

M/Y X99 FAST



MASTER CABIN

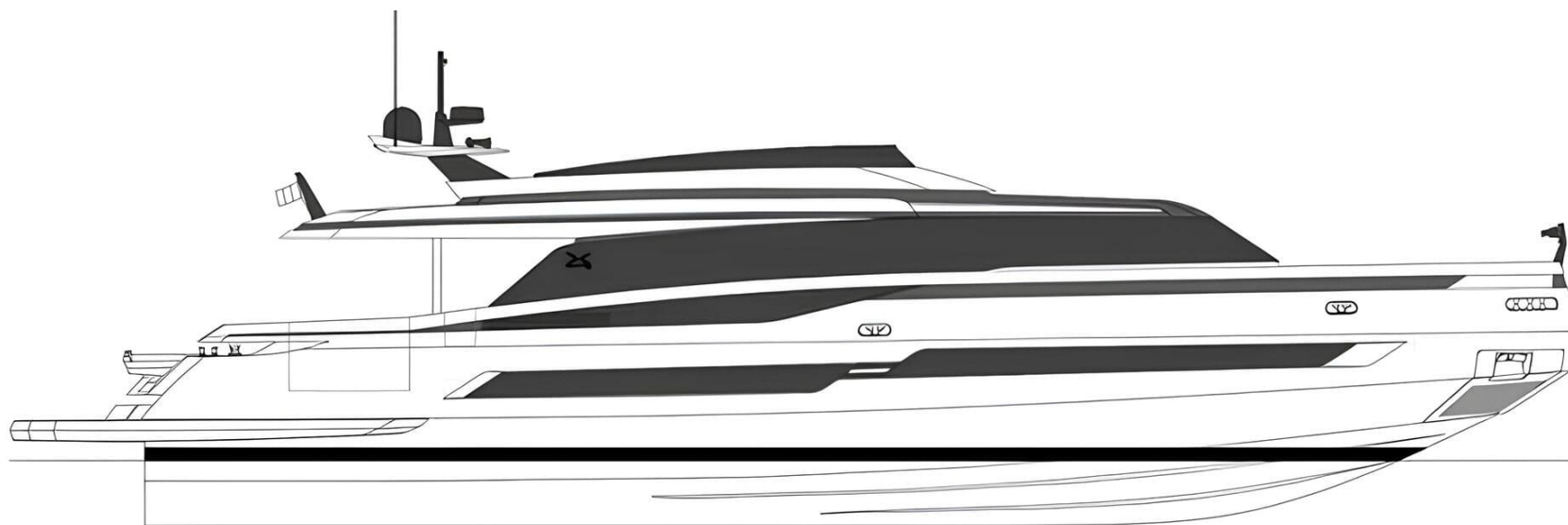
M/Y X99 FAST



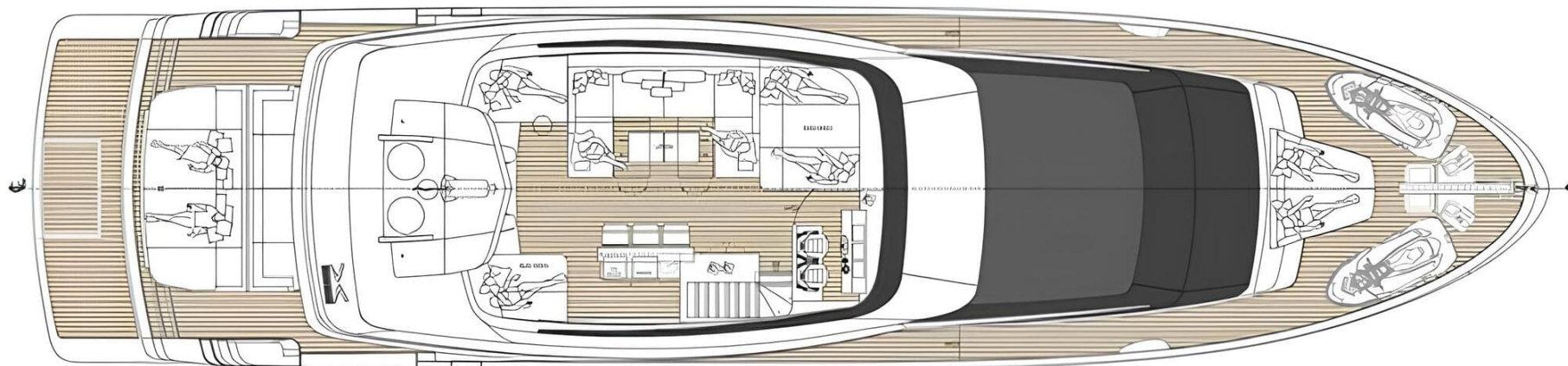
MASTER BATHROOM

M/Y X99 FAST

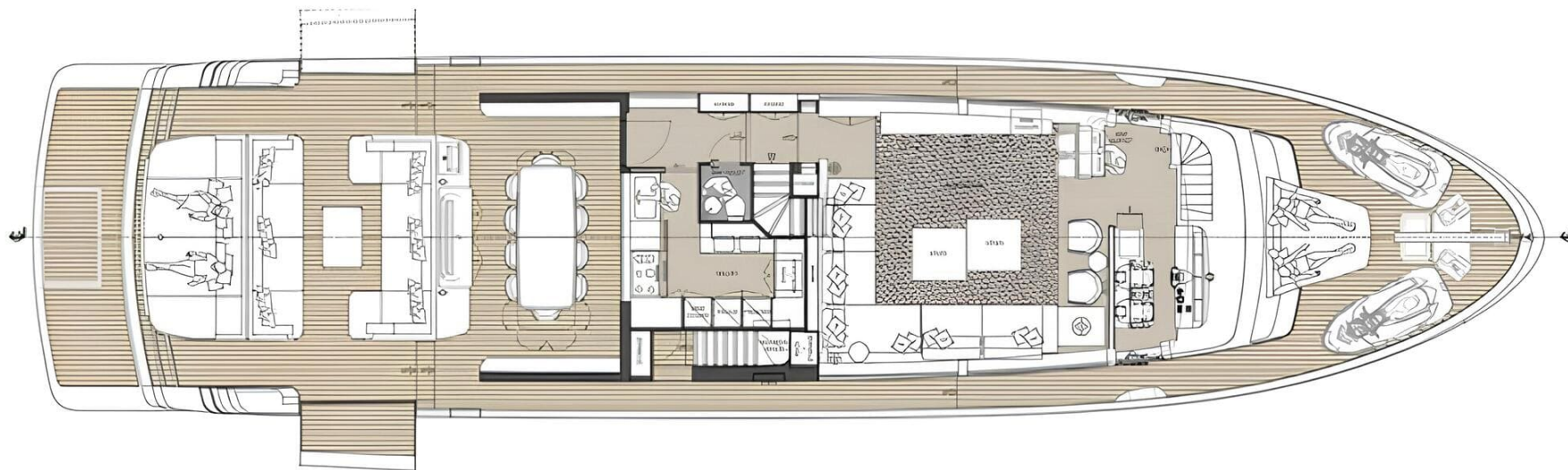
General Arrangement



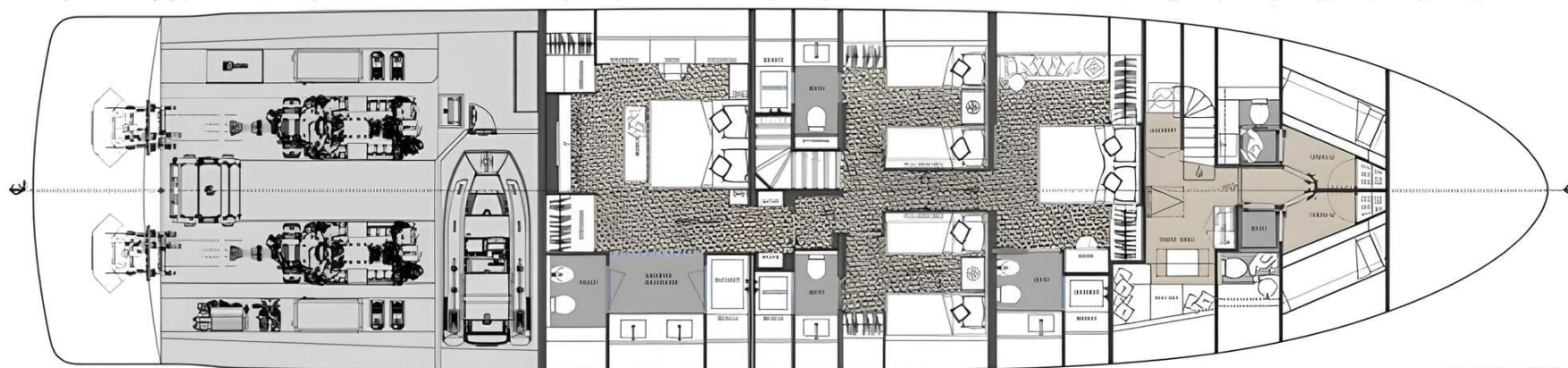
PROFILE



FLYBRIDGE



MAIN DECK



LOWER DECK



KIRILL KUATOV

+377 607 93 15 20

+39 333 576 44 44

 [Send e-mail](#)

 WhatsApp

 Telegram

[More information about M/Y X99 FAST at www.nauyachts.com](#)

[Watch video](#)