



Brokerage

NAU
YACHTS

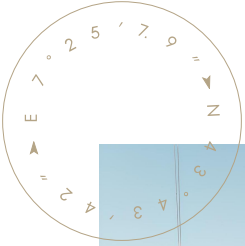
HERCULES

MOTOR YACHT LEADSHIP 49.99M 1998

€17,750,000 (VAT paid)
FLAG - CAYMAN ISLANDS

MOTOR YACHT

HERCULES



HERCULES is a 50-meter full-displacement motor yacht built by **Feadship** in 1998 to a design by De Voogt Naval Architects, with interiors by Glade Johnson Design. With a gross tonnage of 656 GT, she remains one of the most spacious yachts in her class. Between 2022 and 2024, **HERCULES** underwent a major refit, including her 25-year Lloyd's class survey, comprehensive technical upgrades, a full hull repaint in Corinthian Blue, and refreshed interiors throughout.

Accommodation is provided for up to 12 guests in six cabins, thoughtfully laid out for both family cruising and charter. The full-beam master suite on the main deck features a private office and an adjacent single cabin with a Pullman berth - ideal for children, staff, or security personnel. On the lower deck, four additional guest staterooms each come with en-suite bathrooms, including three double cabins and one twin cabin.

HERCULES offers a generous selection of outdoor living spaces designed for privacy and relaxation. The main deck aft features a circular al fresco dining table and fold-out beach club. The bridge deck aft provides a second dining area, while the sun deck is a true leisure hub, with a jacuzzi, bar, lounging areas, and a new outdoor cinema screen installed in 2024.

Powered by twin Caterpillar 3512E diesel engines, **HERCULES** cruises comfortably at 10 knots, with a transatlantic range of up to 6,100 nautical miles. Her efficient propulsion and extensive mechanical refit ensure reliable, economical cruising across long distances.

With her pedigree Northern European construction, timeless styling, and recent modernization, **HERCULES** is equally well-suited to private ownership or luxury charter operations.

[see more information about M/Y HERCULES at www.nauyachts.com](http://www.nauyachts.com)

SPECIFICATION

SHIPYARD, MODEL	Feadship 50M
BUILT	1998
LENGTH	49.99 m
WATERLINE LENGTH	45.3 m
HULL CONFIGURATION	DISPLACEMENT
BEAM	9.29 m
RANGE	6000
DRAFT	3.02 m
GROSS TONNAGE	656 GT
YACHT CLASS	LLOYD'S
CABINS	6+6
MASTER CABIN	MAIN DECK
GUESTS	12
BERTHS	12+12
CREW	12
HEADS	7+6

EXTERIOR DESIGN	DE VOOGT
INTERIOR DESIGN	GLADE JOHNSON DESIGN
HULL	STEEL
SUPERSTRUCTURE	ALUMINIUM
ENGINES	2 x Caterpillar 3512E-DI-TA 1370 h.p.
TYPE OF DRIVE	SHAFT LINE
ENGINE HOURS	17825 h
MAXIMUM SPEED	15 kn
CRUISING SPEED	10 kn
FUEL CONSUMPTION AT ECONOMICAL SPEED	~ 560.24 l/h
FUEL	89146.45 l
GREY WATER	4500 l
BLACK WATER	4500 l
FRESH WATER	26497.88 l
DISPLACEMENT	553

[see more information about M/Y HERCULES at www.nauyachts.com](http://www.nauyachts.com)



EXTERIOR FEADSHIP 50M 1998 MY HERCULES

M/Y HERCULES



EXTERIOR FEADSHIP 50M 1998 MY HERCULES

M/Y HERCULES



EXTERIOR FEADSHIP 50M 1998 MY HERCULES

M/Y HERCULES



EXTERIOR FEADSHIP 50M 1998 MY HERCULES

M/Y HERCULES



EXTERIOR FEADSHIP 50M 1998 MY HERCULES

M/Y HERCULES



EXTERIOR FEADSHIP 50M 1998 MY HERCULES

M/Y HERCULES



EXTERIOR FEADSHIP 50M 1998 MY HERCULES

M/Y HERCULES



AFT AREA

M/Y HERCULES



SUNDECK LOUNGE AREA

M/Y HERCULES



SUNDECK JACUZZI

M/Y HERCULES



SUNDECK JACUZZI

M/Y HERCULES



SUNDECK LOUNGE AREA

M/Y HERCULES



AFT UPPER DECK DINING AREA

M/Y HERCULES



AFT UPPER DECK DINING AREA

M/Y HERCULES



AFT UPPER DECK DINING AREA

M/Y HERCULES



AFT MAIN DECK DINING AREA

M/Y HERCULES



BEACH CLUB

M/Y HERCULES



UPPER DECK SALOON

M/Y HERCULES



MAIN SALON LOUNGE AREA

M/Y HERCULES



MAIN SALON LOUNGE AREA

M/Y HERCULES



MAIN SALON DINING AREA

M/Y HERCULES



MAIN SALON DINING AREA

M/Y HERCULES



MASTER CABIN

M/Y HERCULES



MASTER CABIN

M/Y HERCULES



MASTER BATHROOM

M/Y HERCULES



VIP CABIN

M/Y HERCULES



VIP CABIN

M/Y HERCULES



GUEST CABIN

M/Y HERCULES



GUEST BATHROOM

M/Y HERCULES



MAIN HELM STATION

M/Y HERCULES



GALLEY

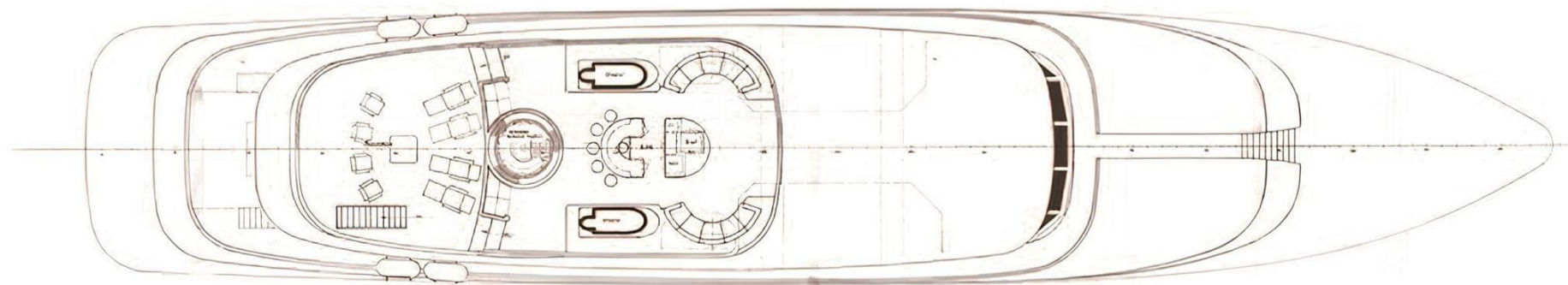
M/Y HERCULES



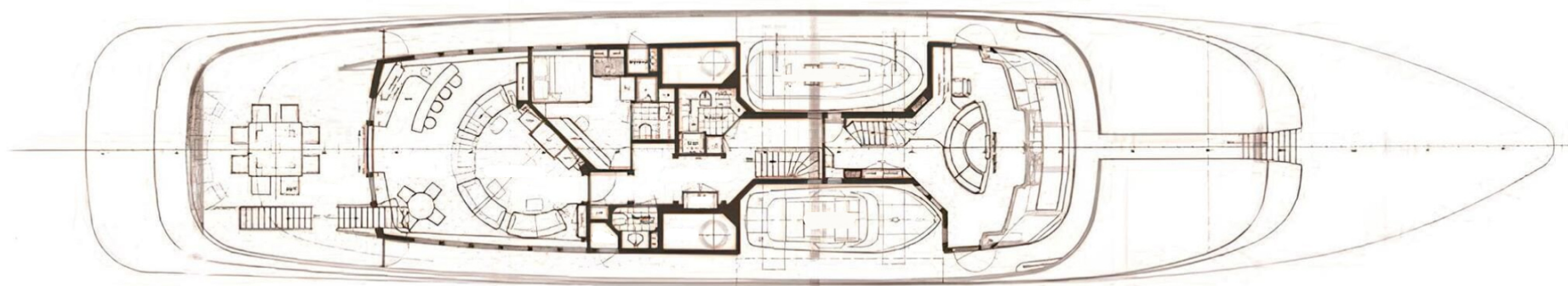
ENGINE ROOM

M/Y HERCULES

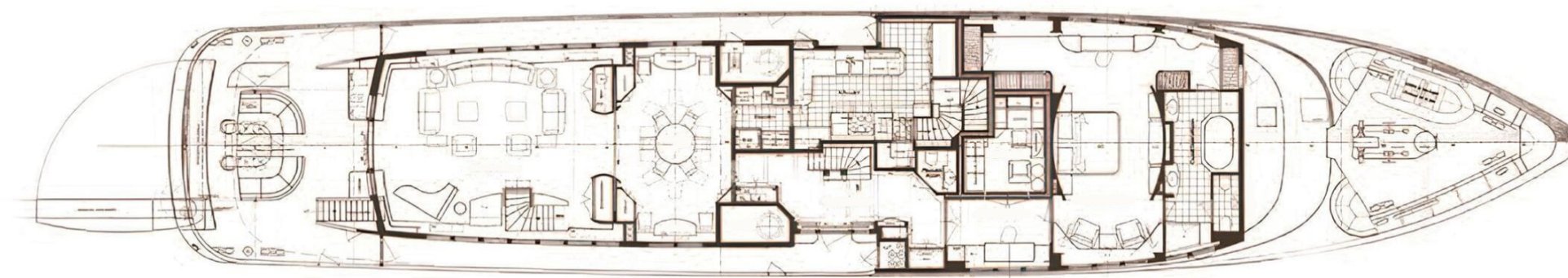
General Arrangement



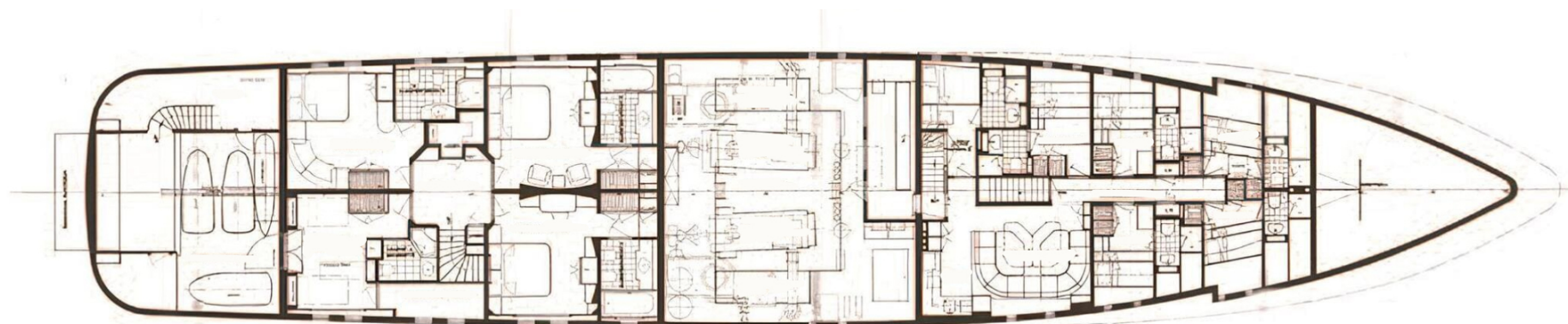
SUNDECK



UPPER DECK



MAIN DECK



LOWER DECK



KIRILL KUATOV

+377 607 93 15 20

+39 333 576 44 44

 [Send e-mail](#)

 WhatsApp

 Telegram

[More information about M/Y HERCULES at www.nauyachts.com](http://www.nauyachts.com)

[Watch video](#)