



Brokerage

NAU
YACHTS

IRYNA II

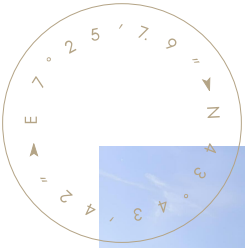
MOTOR YACHT BENETTI 49.9M 2022

€32,000,000

FLAG - UK

MOTOR YACHT

IRYNA II



IRYNA II is a 50-metre **Benetti** motor yacht, launched in 2022. Her bespoke interior was designed by Salvagni Architetti in collaboration with RWD. She has had a single owner and is in excellent condition.

The yacht accommodates 10 guests in five staterooms, including a full-beam master suite with a private balcony, two VIP cabins, and two guest cabins on the lower deck, all with en-suite bathrooms. The upper deck features a lounge that can double as a media area. All decks are connected via an elevator. Additional features include a 36 m² beach club and a glass-bottom swimming pool.

Her hull is constructed of steel with an aluminum superstructure and teak decks. The exterior is designed by RWD, while the interior is a collaboration between Salvagni Architetti and RWD. Powered by twin MAN V12 engines producing 1,380 hp each, she reaches a maximum speed of 15.6 knots and cruises comfortably at 12.5 knots, with a range of up to 4,500 nautical miles at 10 knots.

IRYNA II is equipped with zero-speed stabilisers, a bow thruster, generators, watermakers, and advanced navigation and communication systems. Onboard entertainment includes UHD TVs, Yamaha and Bowers & Wilkins audio systems, and multiple social and relaxation areas.

see more information about M/Y IRYNA II at www.nauyachts.com

SPECIFICATION

SHIPYARD, MODEL	Benetti B.NOW 50M
BUILT	2022
LENGTH	49.9 m
WATERLINE LENGTH	41.2 m
HULL CONFIGURATION	DISPLACEMENT
BEAM	8.9 m
RANGE	3200
DRAFT	2.49 m
GROSS TONNAGE	499 GT
YACHT CLASS	RINA
CABINS	5+5
MASTER CABIN	MAIN DECK
GUESTS	10
BERTHS	10+10
CREW	10
HEADS	7+5

EXTERIOR DESIGN	RWD
INTERIOR DESIGN	SALVAGNI ARCHITETTI & RWD
HULL	STEEL
SUPERSTRUCTURE	GRP
ENGINES	2 x MAN V12 D2862LE446 1380 h.p.
TYPE OF DRIVE	SHAFT LINE
ENGINE HOURS	1341 h
MAXIMUM SPEED	15.6 kn
CRUISING SPEED	12.5 kn
FUEL CONSUMPTION AT ECONOMICAL SPEED	~ 300 l/h
FUEL	62000 l
GREY WATER	4000 l
BLACK WATER	4000 l
FRESH WATER	13000 l
DISPLACEMENT	460

[see more information about M/Y IRYNA II at www.nauyachts.com](http://www.nauyachts.com)



EXTERIOR BENETTI B.NOW 50 2022 MY IRYNA
II

M/Y IRYNA II



11

M/Y IRYNA II



EXTERIOR BENETTI B.NOW 50 2022 MY IRYNA
II

M/Y IRYNA II



EXTERIOR BENETTI B.NOW 50 2022 MY IRYNA

II

M/Y IRYNA II



BOW LOUNGE AREA

M/Y IRYNA II



SUNDECK DINING AREA

M/Y IRYNA II



SUNDECK DINING AREA

M/Y IRYNA II



SUNDECK BAR

M/Y IRYNA II



AFT UPPER DECK DINING AREA

M/Y IRYNA II



AFT UPPER DECK LOUNGE AREA

M/Y IRYNA II



AFT MAIN DECK LOUNGE AREA

M/Y IRYNA II



MAIN SALON LOUNGE AREA

M/Y IRYNA II



MAIN SALON DINING AREA

M/Y IRYNA II



MASTER CABIN

M/Y IRYNA II



MASTER CABIN

M/Y IRYNA II



MASTER CABIN

M/Y IRYNA II



VIP CABIN

M/Y IRYNA II



VIP CABIN

M/Y IRYNA II



UPPER DECK SALOON

M/Y IRYNA II



UPPER DECK SALOON

M/Y IRYNA II



MAIN HELM STATION

M/Y IRYNA II



SAUNA

M/Y IRYNA II



CREW AREA

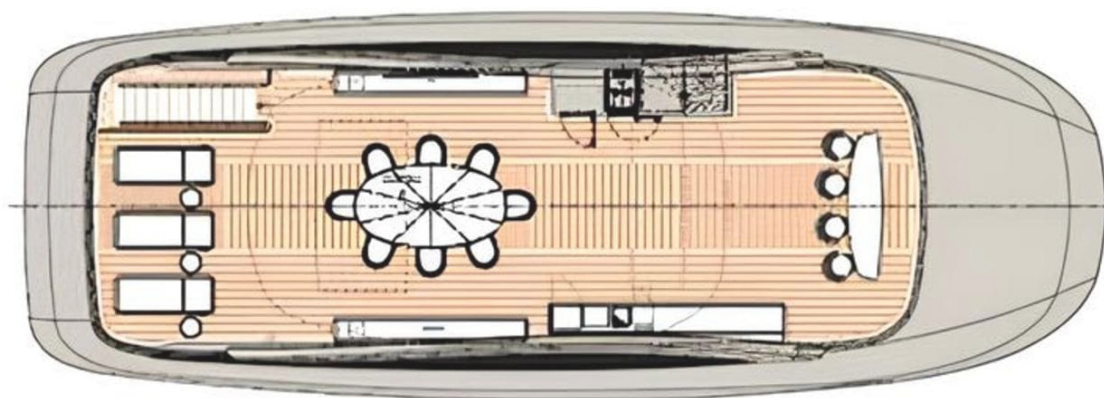
M/Y IRYNA II



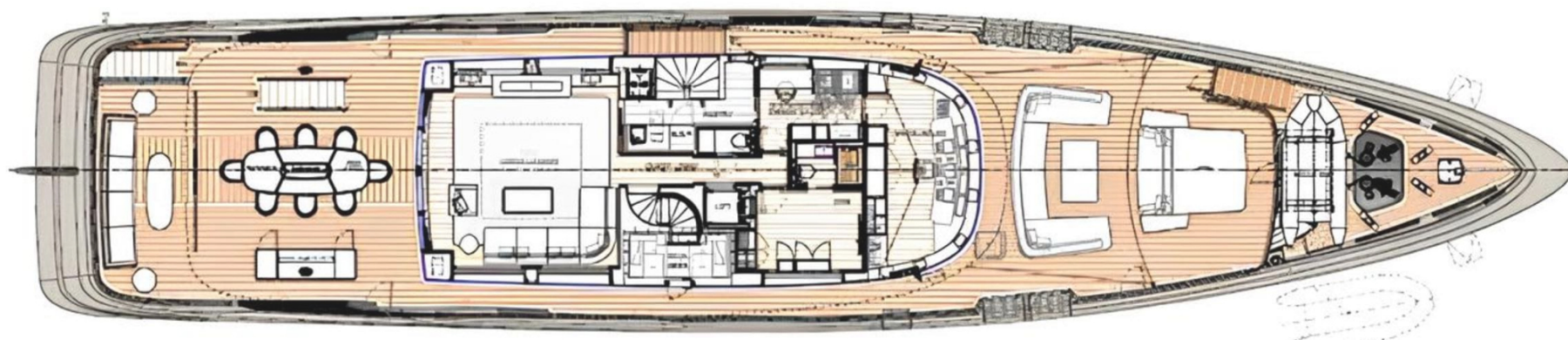
ENGINE ROOM

M/Y IRYNA II

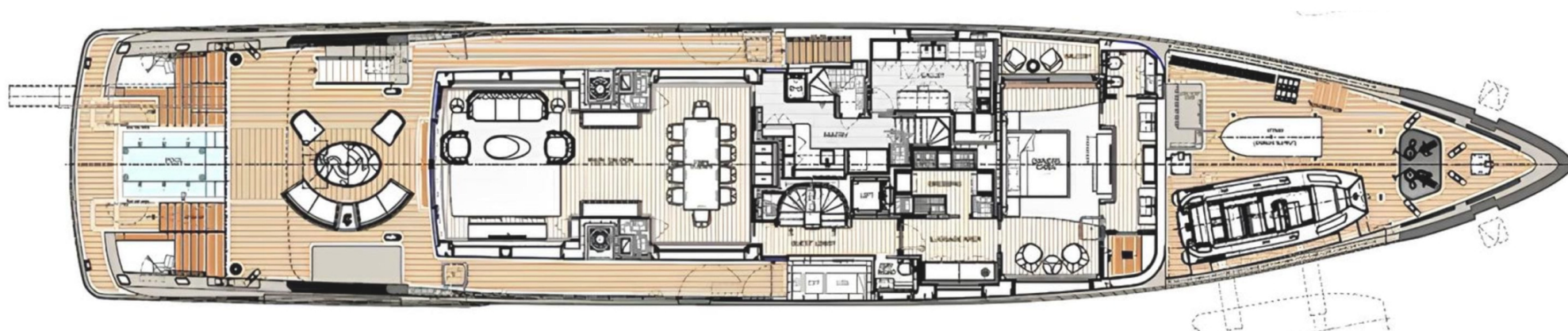
General Arrangement



SUNDECK



UPPER DECK



MAIN DECK



LOWER DECK



KIRILL KUATOV

+377 607 93 15 20

+39 333 576 44 44

 [Send e-mail](#)

 WhatsApp

 Telegram

[More information about M/Y IRYNA II at www.nauyachts.com](http://www.nauyachts.com)

[Watch video](#)