



Brokerage

NAU
YACHTS

ROCKET

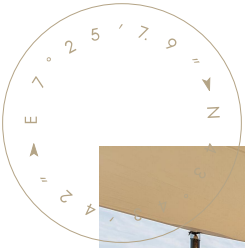
MOTOR YACHT HEESSEN 49.8M 2011

€28,000,000 (VAT
paid)

FLAG - CAYMAN ISLANDS

MOTOR YACHT

ROCKET



ROCKET is a **Heesen 5000** series superyacht, built in 2011 and fully refitted in 2024. Maintained in immaculate condition, she has never been chartered. Her exterior design by Omega Architects and interior by Star Design create a seamless blend of modern lines and elegant styling.

Accommodation is for 12 guests across six cabins. The full-beam master suite is located on the main deck and features a spacious bathroom and office. The lower deck houses three VIP cabins and two twin cabins, all designed for comfort and privacy. Main deck areas include a salon with streamlined sofas, an aft dining area, and an upper deck lounge with a state-of-the-art home cinema with surround sound. Exterior spaces are equally impressive: a sundeck with Jacuzzi, loungers, and glass balustrades, an aft sky lounge with bar, skylights, and sliding glass doors, and an upper deck with open-air dining and relaxation zones.

Powered by two MTU 16V 4000 M90 engines delivering 3,650 hp each, **ROCKET** reaches a top speed of 23 knots and a cruising speed of 17 knots. Zero-speed stabilizers ensure comfort both underway and at anchor.

ROCKET perfectly combines timeless elegance, exceptional comfort, and impressive performance, making her an ideal choice for owners seeking a refined superyacht experience.

[see more information about M/Y ROCKET at www.nauyachts.com](http://www.nauyachts.com)

SPECIFICATION

SHIPYARD, MODEL	Heesen 5000
BUILT	2011
LENGTH	49.8 m
WATERLINE LENGTH	42.7 m
HULL CONFIGURATION	SEMI-DISPLACEMENT
BEAM	9 m
RANGE	3200
DRAFT	2.6 m
GROSS TONNAGE	499 GT
YACHT CLASS	RINA
CABINS	6+5
MASTER CABIN	MAIN DECK
GUESTS	12
BERTHS	12+10
CREW	10
HEADS	7+5

EXTERIOR DESIGN	OMEGA ARCHITECTS
INTERIOR DESIGN	DOMUS NOVA, CRISTIANO GATTO DESIGN
HULL	ALUMINUM
SUPERSTRUCTURE	ALUMINIUM
ENGINES	2 x MTU 16V4000 M90 3650 h.p.
TYPE OF DRIVE	SHAFT LINE
ENGINE HOURS	N/A
MAXIMUM SPEED	23 kn
CRUSING SPEED	17 kn
FUEL CONSUMPTION AT ECONOMICAL SPEED	~ 250 l/h
FUEL	68800 l
GREY WATER	N/A
BLACK WATER	N/A
FRESH WATER	16200 l
DISPLACEMENT	335

[see more information about M/Y ROCKET at www.nauyachts.com](http://www.nauyachts.com)



EXTERIOR HEESEN 5000 2011 MY ROCKET

M/Y ROCKET



EXTERIOR HEESEN 5000 2011 MY ROCKET

M/Y ROCKET



EXTERIOR HEESEN 5000 2011 MY ROCKET

M/Y ROCKET



EXTERIOR HEESEN 5000 2011 MY ROCKET

M/Y ROCKET



SUNDECK JACUZZI

M/Y ROCKET



SUNDECK LOUNGE AREA

M/Y ROCKET



BOW LOUNGE AREA

M/Y ROCKET



BOW LOUNGE AREA

M/Y ROCKET



AFT UPPER DECK LOUNGE AREA

M/Y ROCKET



GARAGE

M/Y ROCKET



UPPER DECK SALOON

M/Y ROCKET



UPPER DECK SALOON

M/Y ROCKET



MAIN SALON LOUNGE AREA

M/Y ROCKET



MAIN SALON DINING AREA

M/Y ROCKET



MASTER CABIN

M/Y ROCKET



MAKE-UP TABLE IN MASTER CABIN

M/Y ROCKET



MASTER BATHROOM

M/Y ROCKET



MASTER BATHROOM

M/Y ROCKET



STAIRS FROM MD TO LD

M/Y ROCKET



STAIRS FROM MD TO LD

M/Y ROCKET



VIP CABIN

M/Y ROCKET



VIP BATHROOM

M/Y ROCKET



GUEST CABIN

M/Y ROCKET



GUEST BATHROOM

M/Y ROCKET



GUEST BATHROOM

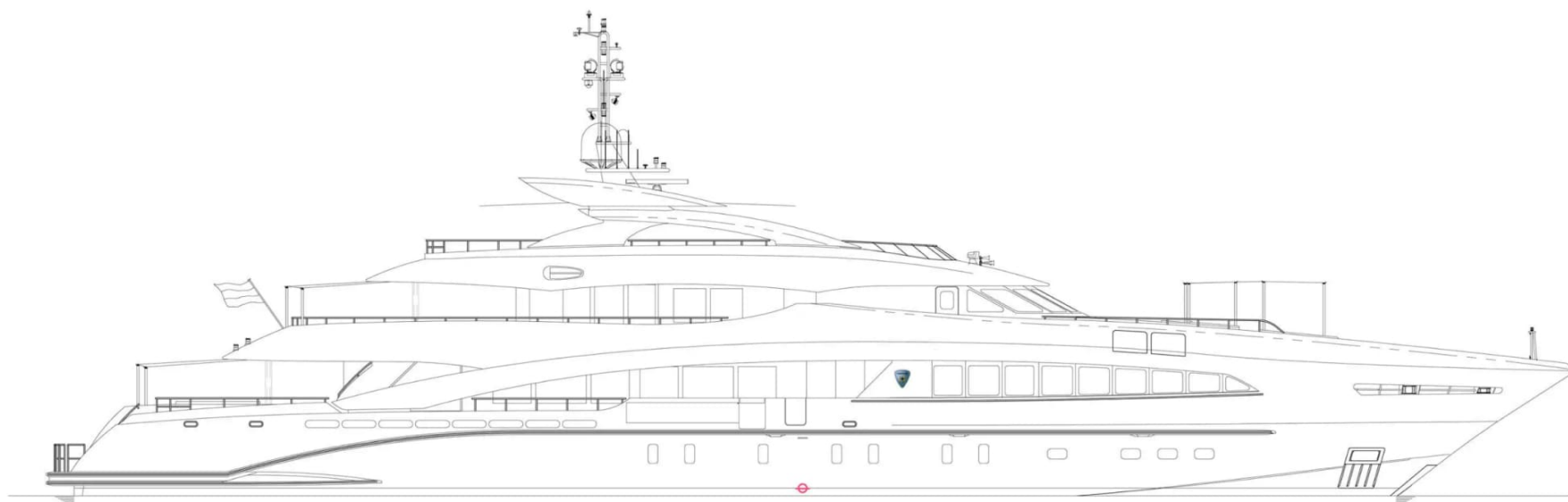
M/Y ROCKET



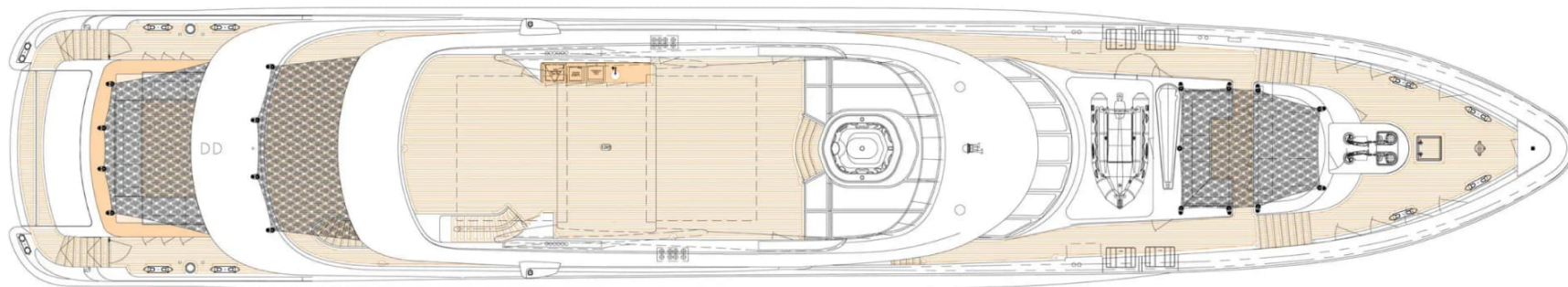
GUEST CABIN

M/Y ROCKET

General Arrangement



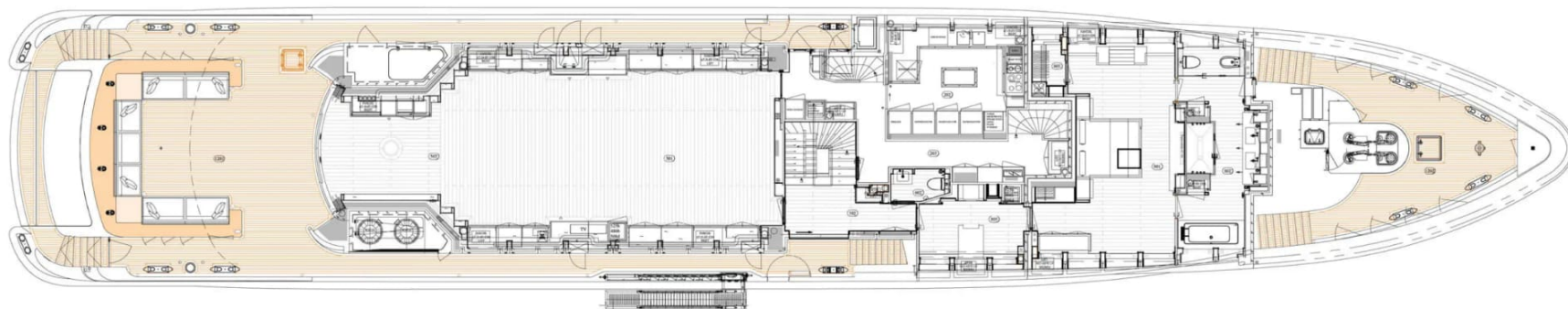
PROFILE



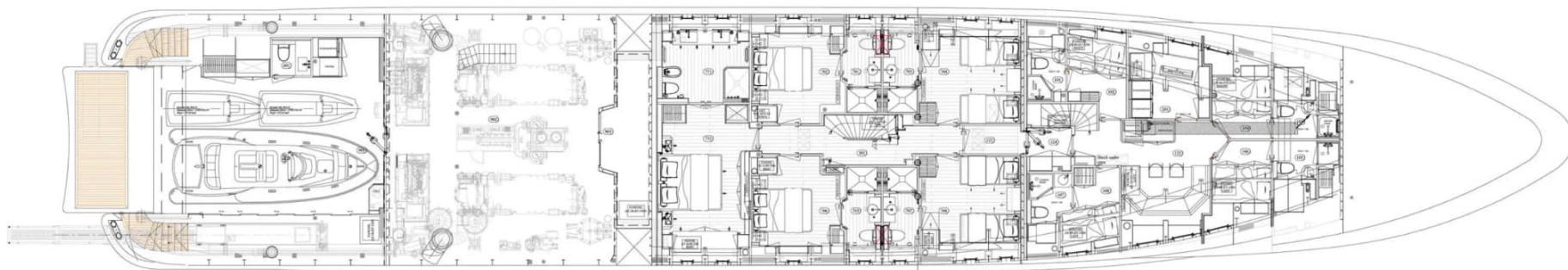
SUNDECK



UPPER DECK



MAIN DECK



LOWER DECK



KIRILL KUATOV

+377 607 93 15 20

+39 333 576 44 44

 [Send e-mail](#)

 WhatsApp

 Telegram

[More information about M/Y ROCKET at www.nauyachts.com](http://www.nauyachts.com)

[Watch video](#)