



Brokerage

NAU  
YACHTS

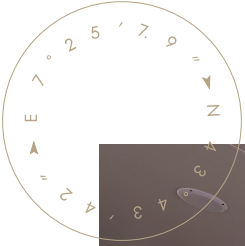
SERENITY II

MOTOR YACHT    MENGI YAY 40.11M    2010

€7,350,000 (VAT paid)  
FLAG - MALTA

MOTOR YACHT

## SERENITY II



**SERENITY II** is a 40.11-meter motor yacht built by **Mengi Yay** in 2010, featuring a steel hull, aluminum superstructure, and teak decks. Her exterior and naval architecture were designed by Endaze Muhendislik, with interiors by H2 Yacht Design. Powered by twin Caterpillar C32 engines (1,240 hp each), she reaches a top speed of 13 knots and cruises comfortably at 11 knots, with a fuel range of 4,620 nautical miles at economical speed.

Accommodation is provided for up to 13 guests in six cabins. The owner's suite on the upper deck opens onto a private terrace with a seating area, while a VIP cabin on the main deck features panoramic 180-degree windows and access to the foredeck. The lower deck hosts another VIP cabin and three double guest cabins. Crew quarters include a captain's cabin near the wheelhouse, with additional crew living areas and galley on the lower deck.

Social areas include a main deck salon with dining area and bar, an aft deck lounge, and a spacious sundeck with Jacuzzi, sun loungers, bar, and alfresco dining under a hardtop.

**SERENITY II** has been meticulously maintained, including a full hull repaint in 2021 and a flag and classification survey in 2022. Equipped with zero-speed stabilizers and modern navigation systems, she is ready for immediate delivery to a new owner.

[see more information about M/Y SERENITY II at www.nauyachts.com](http://www.nauyachts.com)

# SPECIFICATION

SHIPYARD, MODEL	Mengi Yay 40M
BUILT	2010
LENGTH	40.11 m
WATERLINE LENGTH	38.16 m
HULL CONFIGURATION	DISPLACEMENT
BEAM	7.9 m
RANGE	4620
DRAFT	2.44 m
GROSS TONNAGE	395 GT
YACHT CLASS	RINA
CABINS	6+5
MASTER CABIN	UPPER DECK
GUESTS	13
BERTHS	13+9
CREW	9
HEADS	7+5

EXTERIOR DESIGN	ENDAZE MUHENDISLIK
INTERIOR DESIGN	H2 YACHT DESIGN
HULL	STEEL
SUPERSTRUCTURE	ALUMINIUM
ENGINES	2 x Caterpillar C32 1240 h.p.
TYPE OF DRIVE	SHAFT LINE
ENGINE HOURS	N/A
MAXIMUM SPEED	13 kn
CRUSING SPEED	11 kn
FUEL CONSUMPTION AT ECONOMICAL SPEED	~ 250 l/h
FUEL	46000 l
GREY WATER	N/A
BLACK WATER	N/A
FRESH WATER	9000 l
DISPLACEMENT	385

[see more information about M/Y SERENITY II at www.nauyachts.com](http://www.nauyachts.com)





EXTERIOR MENGI YAY 40M 2010 MY SERENITY

II

M/Y SERENITY II





EXTERIOR MENGI YAY 40M 2010 MY SERENITY

II

M/Y SERENITY II





EXTERIOR MENGI YAY 40M 2010 MY SERENITY

II

M/Y SERENITY II





EXTERIOR MENGI YAY 40M 2010 MY SERENITY  
II

M/Y SERENITY II





EXTERIOR MENGI YAY 40M 2010 MY SERENITY

II

M/Y SERENITY II





AFT MAIN DECK DINING AREA

M/Y SERENITY II





AFT UPPER DECK LOUNGE AREA

M/Y SERENITY II





SUNDECK LOUNGE AREA

M/Y SERENITY II





SUNDECK BAR

M/Y SERENITY II





SUNDECK LOUNGE AREA

M/Y SERENITY II





UPPER DECK SALON BAR

M/Y SERENITY II





MAIN SALON LOUNGE AREA

M/Y SERENITY II





MAIN SALON LOUNGE AREA

M/Y SERENITY II





MAIN SALON DINING AREA

M/Y SERENITY II





MAIN HELM STATION

M/Y SERENITY II





MASTER CABIN

M/Y SERENITY II





MASTER BATHROOM

M/Y SERENITY II





MASTER BATHROOM

M/Y SERENITY II





VIP CABIN

M/Y SERENITY II





VIP CABIN

M/Y SERENITY II





VIP BATHROOM

M/Y SERENITY II





## VIP BATHROOM

M/Y SERENITY II





VIP CABIN

M/Y SERENITY II





VIP BATHROOM

M/Y SERENITY II





SAUNA

M/Y SERENITY II





ENGINE ROOM

M/Y SERENITY II





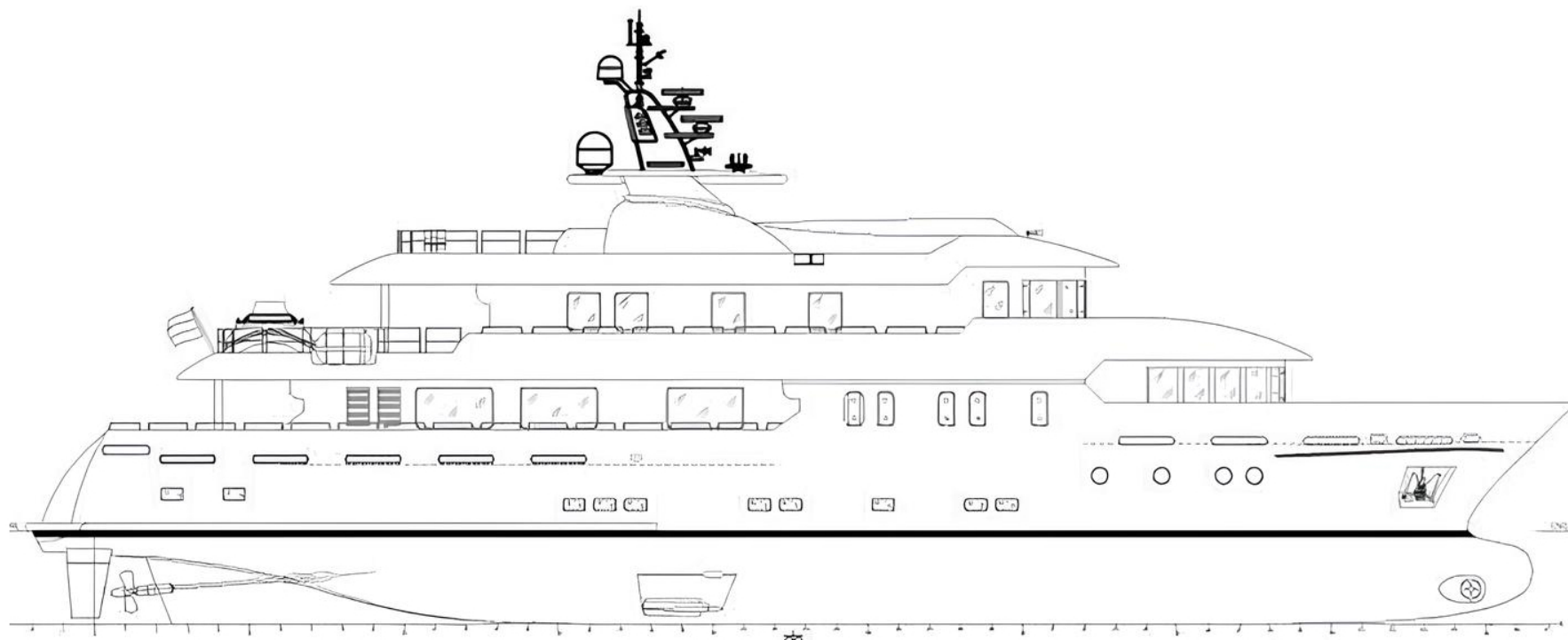
CREW AREA

M/Y SERENITY II



# General Arrangement

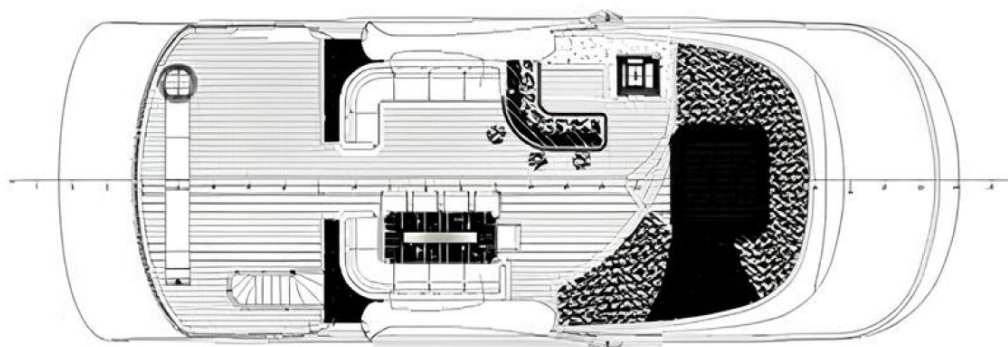




---

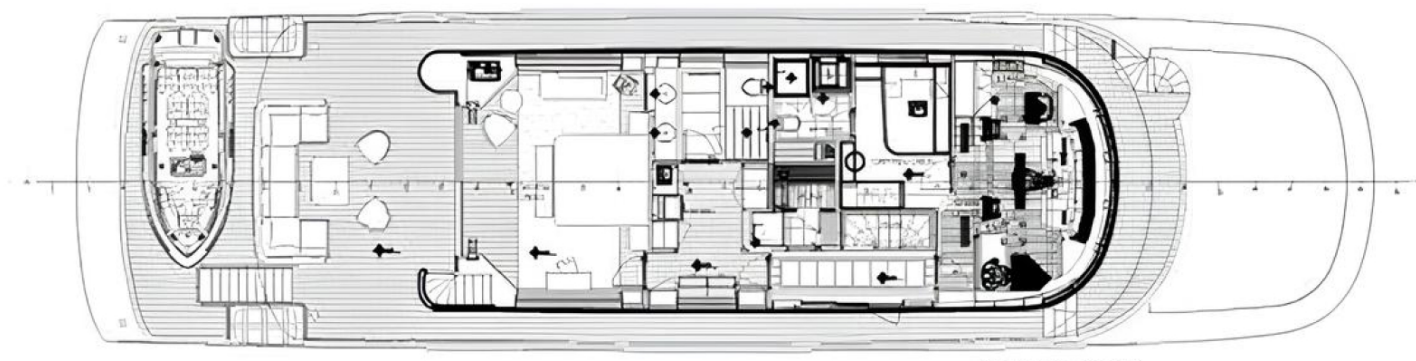
PROFILE





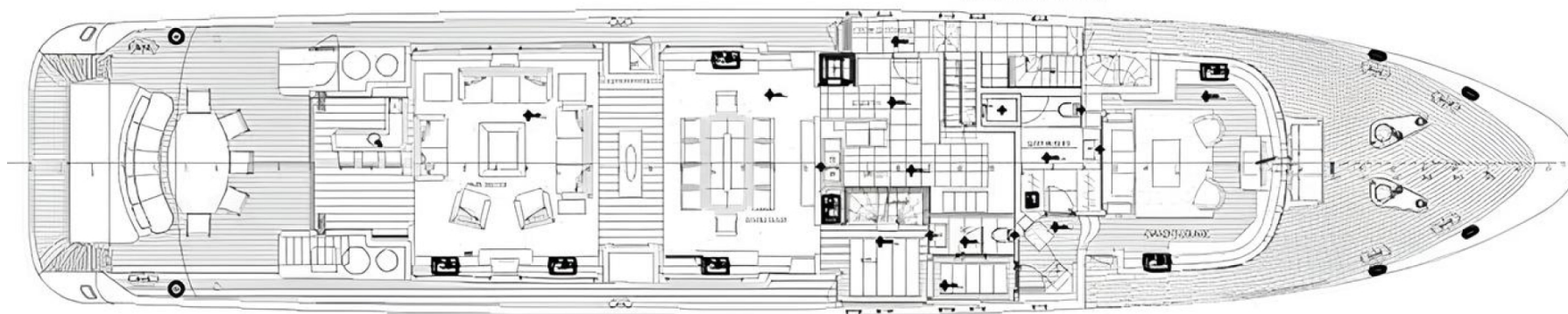
SUNDECK





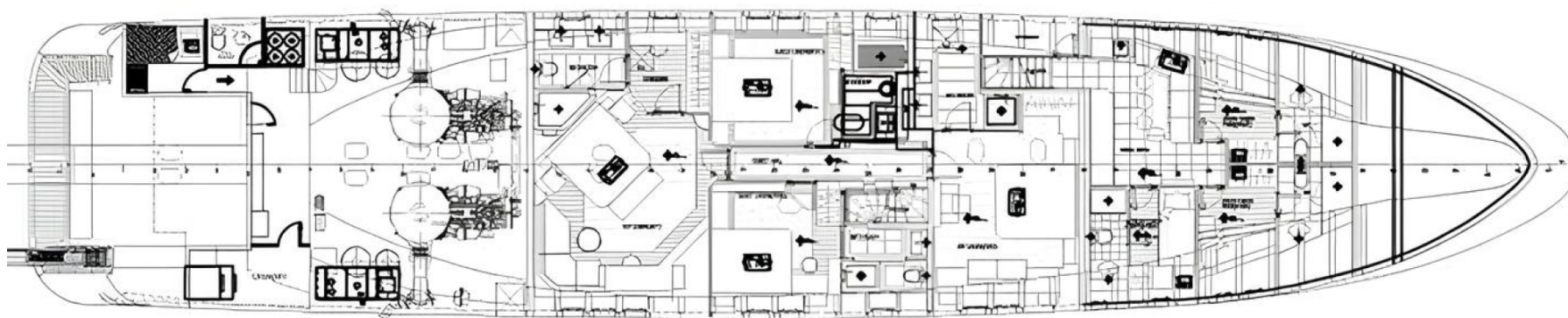
UPPER DECK





MAIN DECK





LOWER DECK





## KIRILL KUATOV

+377 607 93 15 20

+39 333 576 44 44

 [Send e-mail](#)

 WhatsApp

 Telegram

[More information about M/Y SERENITY II at www.nauyachts.com](http://www.nauyachts.com)

[Watch video](#)