



Brokerage

NAU
YACHTS

SOLAFIDE

MOTOR YACHT BENETTI 51.28M 1995

€19,250,000
FLAG - MARSHALL ISLAND

MOTOR YACHT

SOLAFIDE



SOLAFIDE is a 52-meter motor yacht built by **Benetti** in 1995 and extensively refitted between 2023–2025. The full-scale refit encompassed every aspect of the yacht, from technical systems to interiors, earning her a nomination for Best Refit of the Year (499GT and below) at the World Superyacht Awards 2025.

Her iconic **Benetti** silhouette was subtly modernized by architect Tommaso Spadolini, while interiors were redesigned by Giulia Grassi of Supernova Design Studio in collaboration with Yachtique (Azimut-Benetti Group). During the refit, Deutz engines were fully overhauled, generators upgraded, zero-speed stabilizers installed, and all navigation, electrical, and multimedia systems renewed.

Outdoor decks were completely reimagined: the aft deck features drop-down balconies providing direct sea access, and the sundeck has been reinforced for helicopter landings. Modular furniture, flexible layouts, and teak finishes create functional, contemporary outdoor living spaces.

Interiors are finished in light tones with oak, Carrara marble, and onyx accents. The layout now offers six cabins for 12 guests, including a full-beam master on the main deck and four guest cabins on the lower deck, plus a new VIP suite on the upper deck.

With a steel hull and aluminum superstructure, **SOLAFIDE** combines structural reliability with modern systems. She cruises at 14 knots, reaches a maximum speed of 21 knots, and has a range of 4,600 nautical miles, remaining within the under-500 GT category while providing generous deck and interior volumes, ideal for private use or charter operations.

[see more information about M/Y SOLAFIDE at www.nauyachts.com](http://www.nauyachts.com)

SPECIFICATION

SHIPYARD, MODEL	Benetti 52M
BUILT	1995
LENGTH	51.28 m
WATERLINE LENGTH	45.96 m
HULL CONFIGURATION	DISPLACEMENT
BEAM	8.9 m
RANGE	4600
DRAFT	3 m
GROSS TONNAGE	474 GT
YACHT CLASS	RINA
CABINS	6+6
MASTER CABIN	MAIN DECK
GUESTS	12
BERTHS	12+12
CREW	12
HEADS	7+6

EXTERIOR DESIGN	STEFANO NATUCCI
INTERIOR DESIGN	SUPERNOVA DESIGN STUDIO
HULL	STEEL
SUPERSTRUCTURE	ALUMINIUM
ENGINES	2 x Deutz TBD 604 BV16 3000 h.p.
TYPE OF DRIVE	SHAFT LINE
ENGINE HOURS	10161 h
MAXIMUM SPEED	21 kn
CRUISING SPEED	14 kn
FUEL CONSUMPTION AT ECONOMICAL SPEED	~ 250 l/h
FUEL	78000 l
GREY WATER	9000 l
BLACK WATER	7000 l
FRESH WATER	13000 l
DISPLACEMENT	494

[see more information about M/Y SOLAFIDE at www.nauyachts.com](http://www.nauyachts.com)



EXTERIOR BENETTI 52M 1995 MY SOLAFIDE

M/Y SOLAFIDE



EXTERIOR BENETTI 52M 1995 MY SOLAFIDE

M/Y SOLAFIDE



EXTERIOR BENETTI 52M 1995 MY SOLAFIDE

M/Y SOLAFIDE



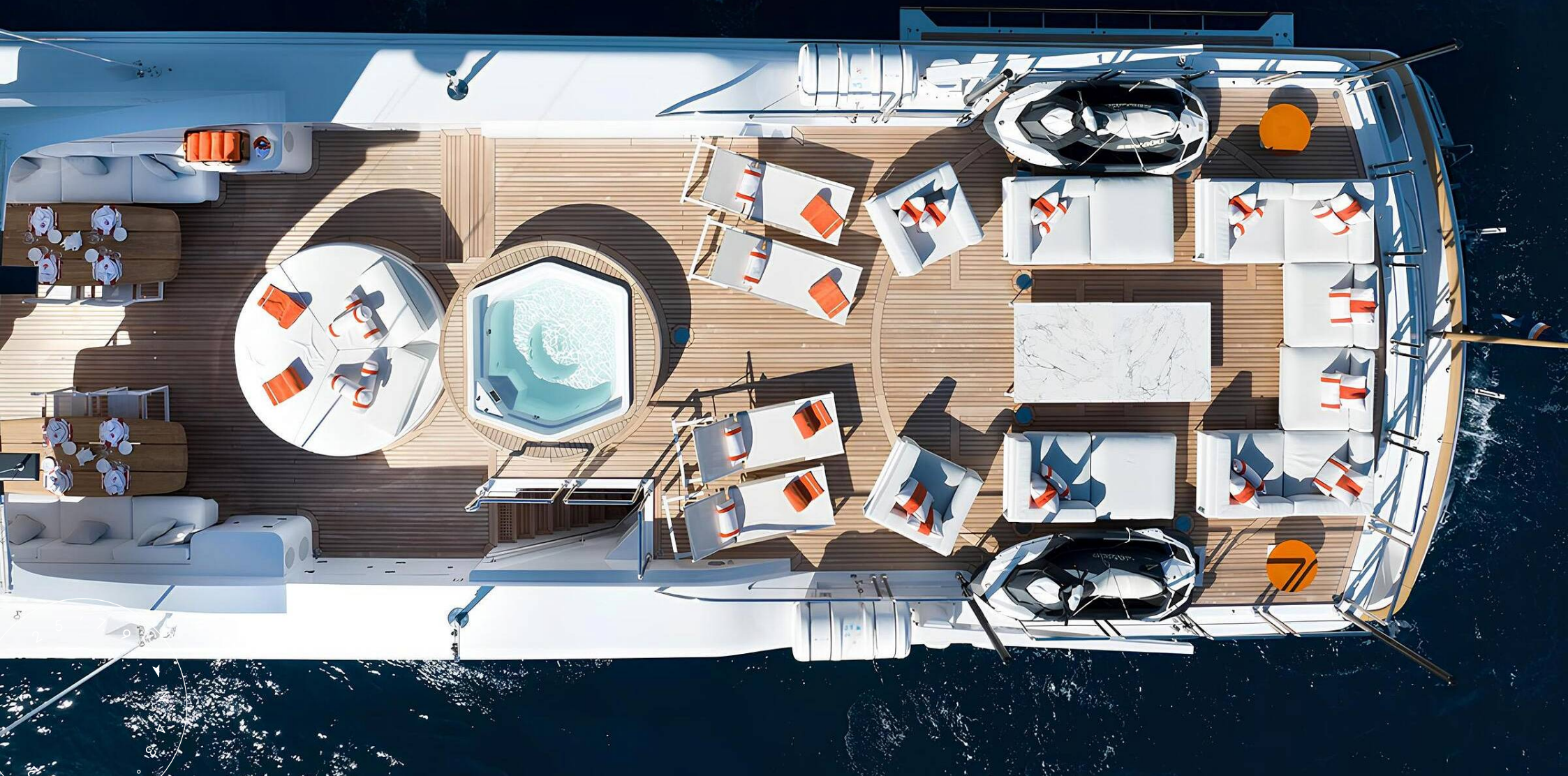
EXTERIOR BENETTI 52M 1995 MY SOLAFIDE

M/Y SOLAFIDE



EXTERIOR BENETTI 52M 1995 MY SOLAFIDE

M/Y SOLAFIDE



SUNDECK LOUNGE AREA

M/Y SOLAFIDE



SUNDECK JACUZZI

M/Y SOLAFIDE



SUNDECK LOUNGE AREA

M/Y SOLAFIDE



AFT UPPER DECK DINING AREA

M/Y SOLAFIDE



AFT MAIN DECK DINING AREA

M/Y SOLAFIDE



MAIN SALON LOUNGE AREA

M/Y SOLAFIDE



MAIN SALON DINING AREA

M/Y SOLAFIDE



OFFICE IN THE MASTER CABIN

M/Y SOLAFIDE



MASTER CABIN

M/Y SOLAFIDE



MASTER CABIN

M/Y SOLAFIDE



MAKE-UP TABLE IN MASTER CABIN

M/Y SOLAFIDE



MASTER BATHROOM

M/Y SOLAFIDE



VIP CABIN

M/Y SOLAFIDE



VIP BATHROOM

M/Y SOLAFIDE



VIP CABIN

M/Y SOLAFIDE



GUEST CABIN

M/Y SOLAFIDE



GUEST BATHROOM

M/Y SOLAFIDE



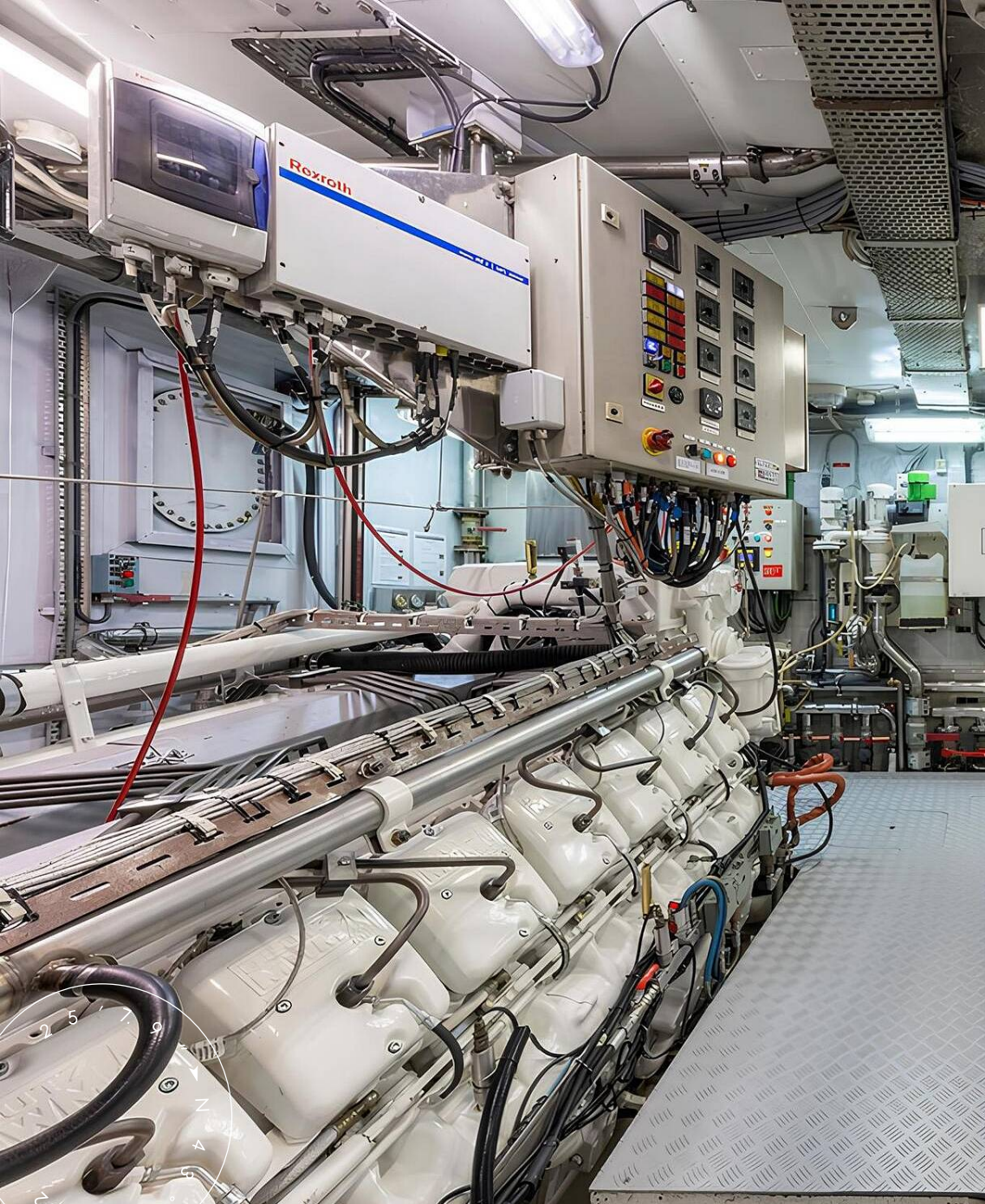
MAIN HELM STATION

M/Y SOLAFIDE



GALLEY

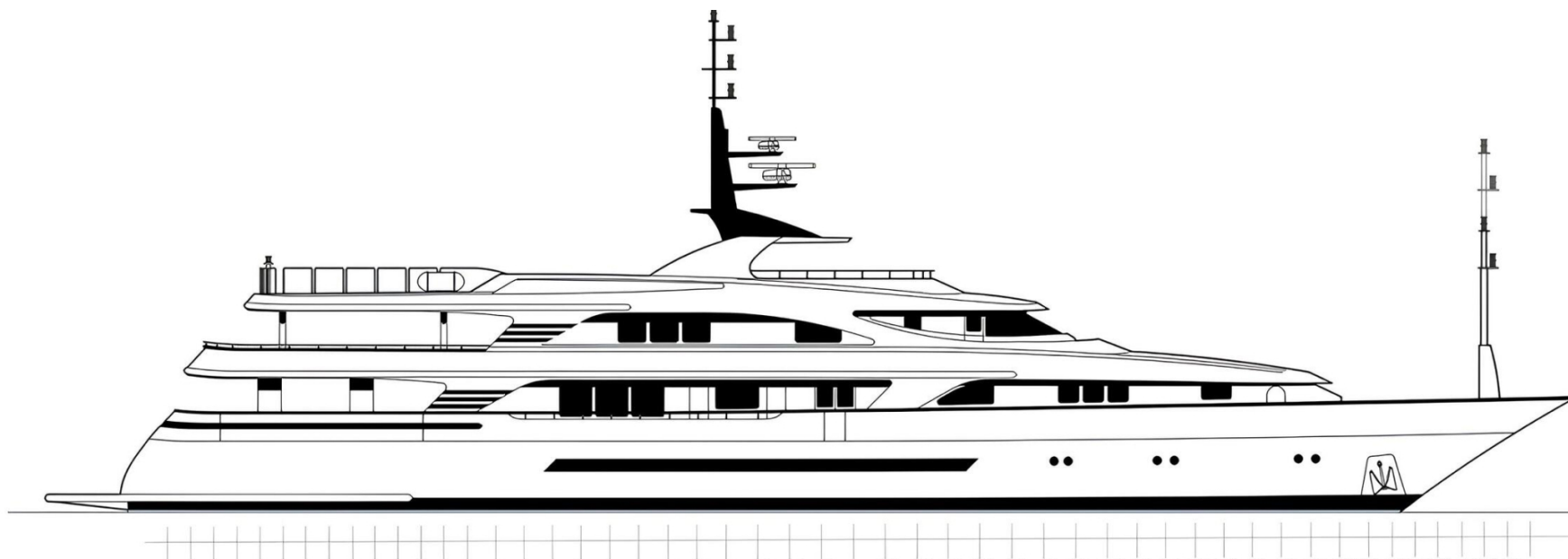
M/Y SOLAFIDE



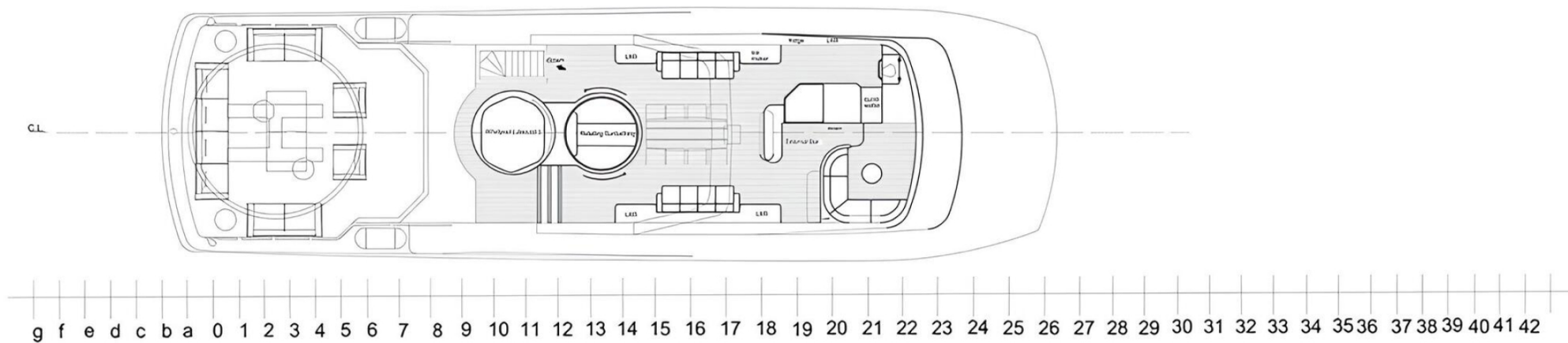
ENGINE ROOM

M/Y SOLAFIDE

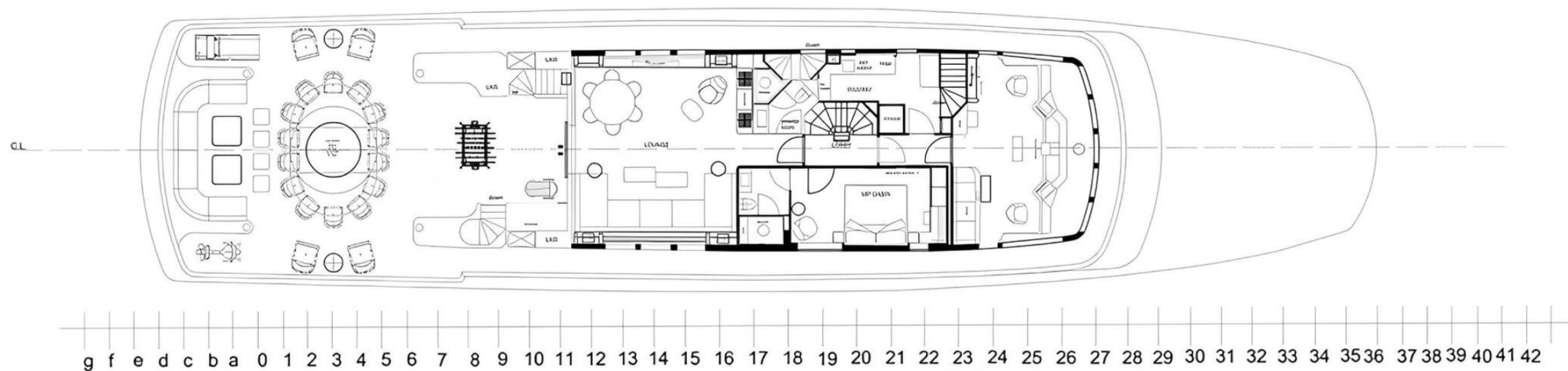
General Arrangement



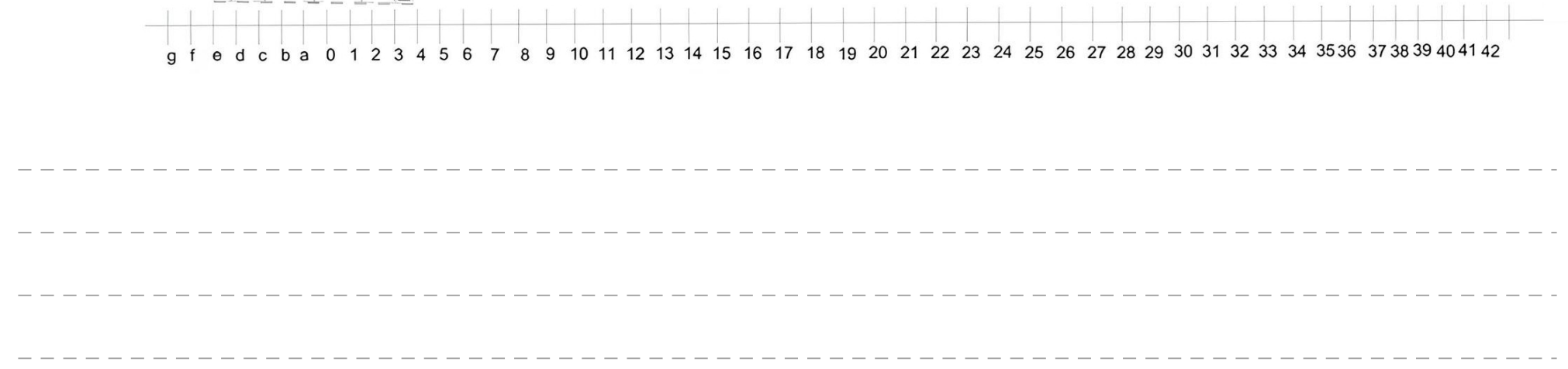
PROFILE



SUNDECK



UPPER DECK



MAIN DECK

LOWER DECK



KIRILL KUATOV

+377 607 93 15 20

+39 333 576 44 44

 [Send e-mail](#)

 WhatsApp

 Telegram

[More information about M/Y SOLAFIDE at www.nauyachts.com](http://www.nauyachts.com)

[Watch video](#)