



Brokerage

NAU  
YACHTS

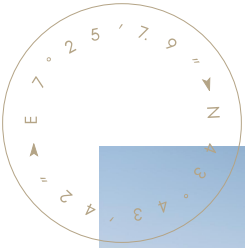
OLMIDA

MOTOR YACHT    HAKVOORT 48.77M    2010

€24,500,000  
FLAG - CAYMAN ISLANDS

MOTOR YACHT

## OLMIDA



Delivered in 2010 by **Royal Hakvoort Shipyard** and extensively refitted in 2024, **OLMIDA** is a 48.77-meter motor yacht that embodies Dutch craftsmanship and refined design, with contributions from Diana Yachts, Glade Johnson, and Sinot Design. Privately owned and meticulously maintained since launch, she is presented in immaculate condition.

Her layout accommodates up to 14 guests across seven staterooms, including a dedicated owner's deck with a private terrace, two VIP suites on the upper deck, and four additional guest cabins on the lower deck. Interiors feature sapele mahogany, honey onyx, mother-of-pearl, and custom leather detailing, enhanced by a glass elevator and a sweeping staircase connecting all decks.

The yacht's guest spaces are designed for both relaxation and entertainment. The main salon features large windows, refined furnishings, and a drop-down cinema screen, while the upper deck lounge spans the full beam and boasts an 84-inch screen for film nights.

Outdoor living is equally impressive, with a 12-seat extendable dining table and a full bar on the upper deck aft, as well as a panoramic sundeck with shaded and open-air lounges, designer furnishings, and sliding windbreak panels.

Powered by twin MTU 8V4000 diesel engines (938 hp each), **OLMIDA** cruises comfortably at 12.5 knots with a range of 3,500 nautical miles. Zero-speed stabilizers ensure complete comfort at anchor and underway.

[see more information about M/Y OLMIDA at www.nauyachts.com](http://www.nauyachts.com)



# SPECIFICATION

SHIPYARD, MODEL	Hakvoort 49M
BUILT	2010
LENGTH	48.77 m
WATERLINE LENGTH	41.55 m
HULL CONFIGURATION	DISPLACEMENT
BEAM	9.15 m
RANGE	3500
DRAFT	2.94 m
GROSS TONNAGE	703 GT
YACHT CLASS	RINA
CABINS	7+6
MASTER CABIN	UPPER DECK
GUESTS	14
BERTHS	14+11
CREW	11
HEADS	8+6

EXTERIOR DESIGN	GLADE JOHNSON DESIGN
INTERIOR DESIGN	SINOT DESIGN ASSOCIATES
HULL	STEEL
SUPERSTRUCTURE	ALUMINIUM
ENGINES	2 x MTU 8V4000M60R 938 h.p.
TYPE OF DRIVE	SHAFT LINE
ENGINE HOURS	7101 h
MAXIMUM SPEED	13.2 kn
CRUSING SPEED	12.5 kn
FUEL CONSUMPTION AT ECONOMICAL SPEED	N/A
FUEL	74000 l
GREY WATER	4000 l
BLACK WATER	3600 l
FRESH WATER	13100 l
DISPLACEMENT	279

[see more information about M/Y OLMIDA at www.nauyachts.com](http://www.nauyachts.com)



EXTERIOR HAKVOORT 49M 2010 MY OLMIDA

M/Y OLMIDA





EXTERIOR HAKVOORT 49M 2010 MY OLMIDA

M/Y OLMIDA





EXTERIOR HAKVOORT 49M 2010 MY OLMIDA

M/Y OLMIDA





EXTERIOR HAKVOORT 49M 2010 MY OLMIDA

M/Y OLMIDA





EXTERIOR HAKVOORT 49M 2010 MY OLMIDA

M/Y OLMIDA





EXTERIOR HAKVOORT 49M 2010 MY OLMIDA

M/Y OLMIDA





*Olmida*  
GEORGE TOWN

GARAGE

M/Y OLMIDA





AFT MAIN DECK LOUNGE AREA

M/Y OLMIDA





AFT MAIN DECK LOUNGE AREA

M/Y OLMIDA





AFT UPPER DECK DINING AREA

M/Y OLMIDA





AFT UPPER DECK DINING AREA

M/Y OLMIDA





SUNDECK LOUNGE AREA

M/Y OLMIDA





SUNDECK LOUNGE AREA

M/Y OLMIDA





BOW DINING AREA

M/Y OLMIDA





BOW DINING AREA

M/Y OLMIDA





UPPER DECK SALOON

M/Y OLMIDA





UPPER DECK SALOON

M/Y OLMIDA





MAIN SALON LOUNGE AREA

M/Y OLMIDA





MAIN SALON LOUNGE AREA

M/Y OLMIDA





MAIN SALON LOUNGE AREA

M/Y OLMIDA





MAIN SALON DINING AREA

M/Y OLMIDA





VIP CABIN

M/Y OLMIDA





VIP CABIN

M/Y OLMIDA





VIP BATHROOM

M/Y OLMIDA





MASTER CABIN

M/Y OLMIDA





MASTER CABIN

M/Y OLMIDA





MASTER CABIN

M/Y OLMIDA





MASTER BATHROOM

M/Y OLMIDA





VIP CABIN

M/Y OLMIDA





VIP CABIN

M/Y OLMIDA





VIP BATHROOM

M/Y OLMIDA





GUEST CABIN

M/Y OLMIDA





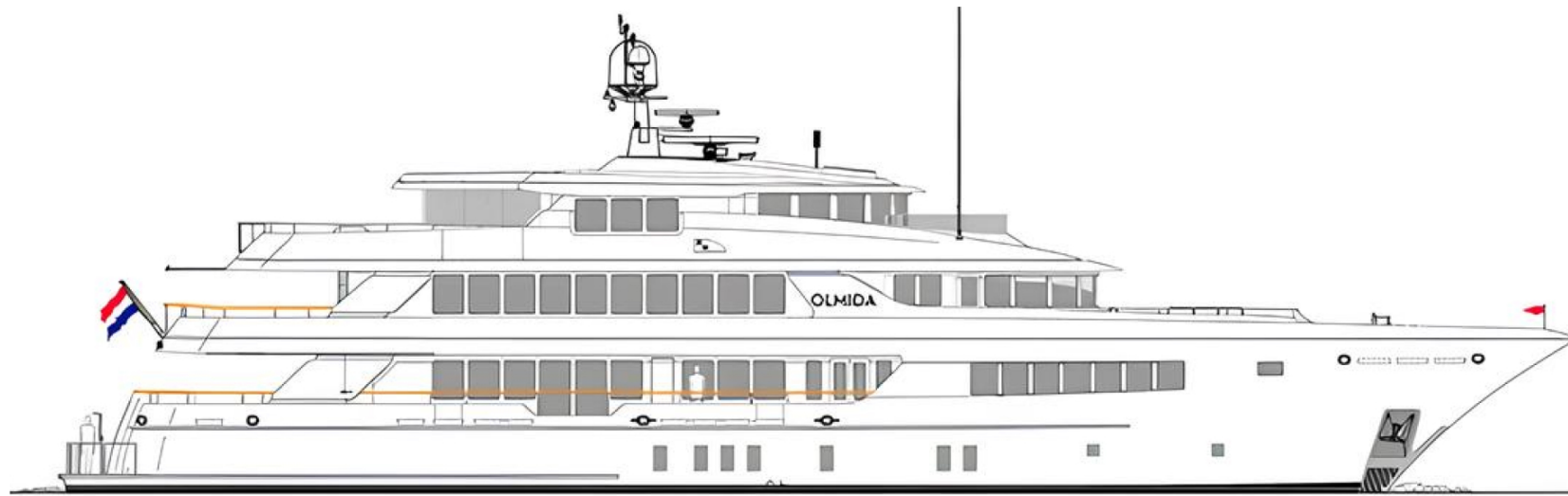
MAIN HELM STATION

M/Y OLMIDA



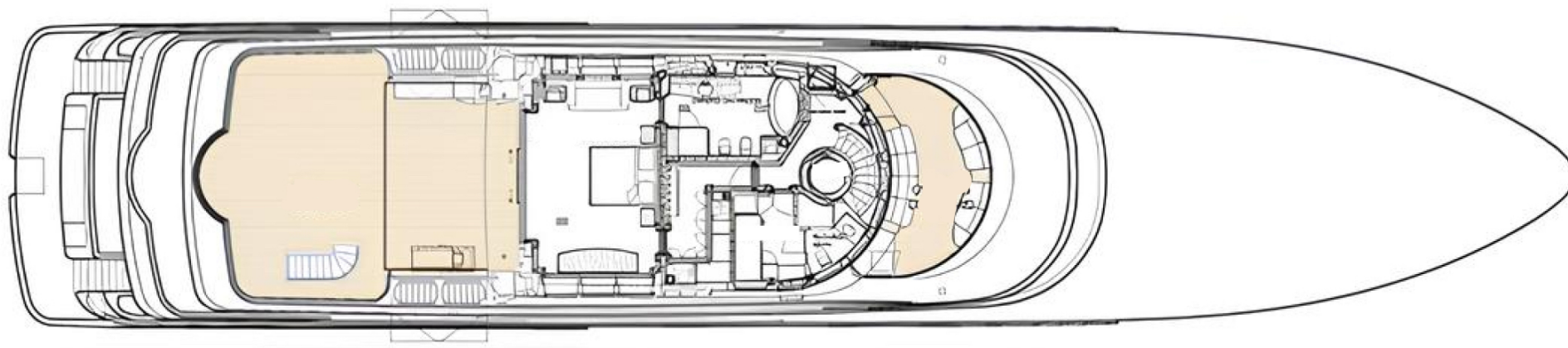
# General Arrangement





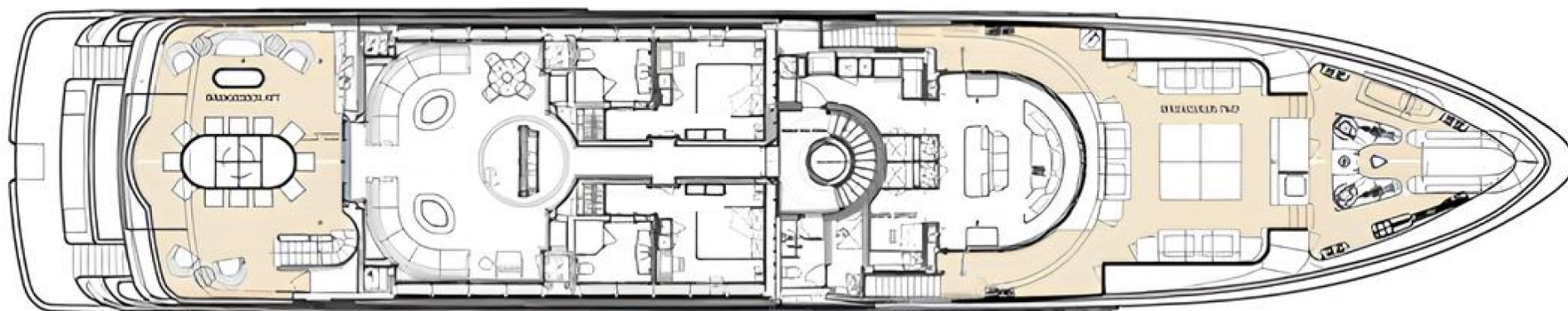
PROFILE





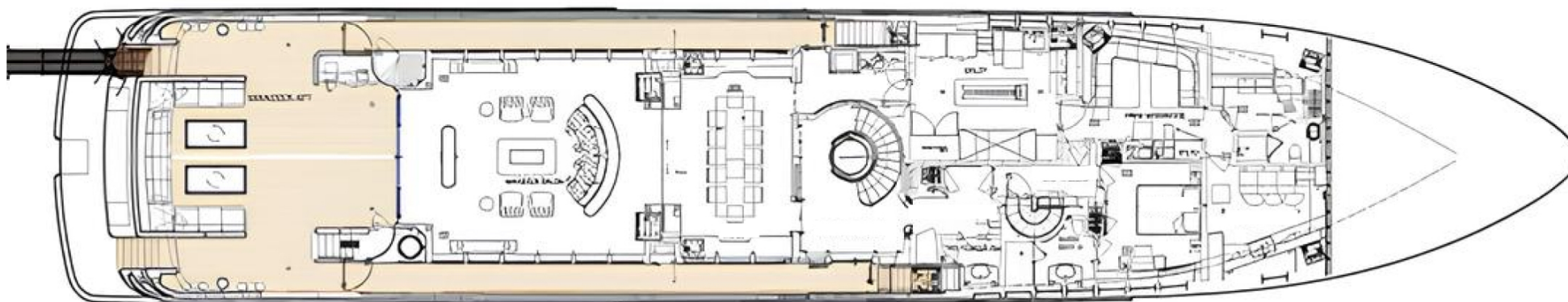
SUNDECK





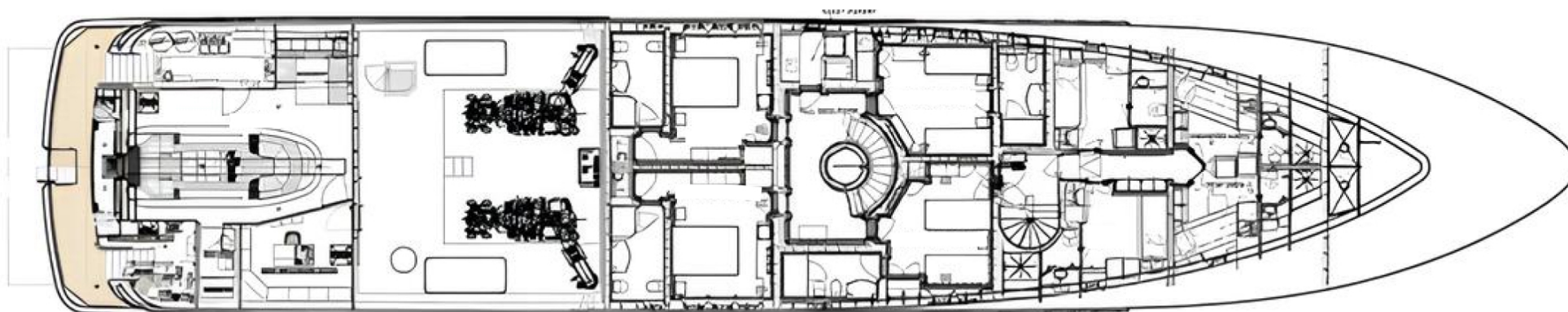
UPPER DECK





MAIN DECK





LOWER DECK





## KIRILL KUATOV

+377 607 93 15 20

+39 333 576 44 44

 [Send e-mail](#)

 WhatsApp

 Telegram

[More information about M/Y OLMIDA at www.nauyachts.com](#)

[Watch video](#)