



Brokerage

NAU
YACHTS

ENCHANTMENT

MOTOR YACHT

CRN 43M

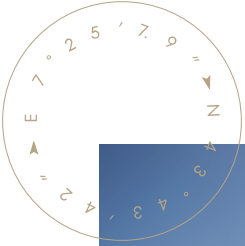
2013

€10,900,000

FLAG - MARSHALL ISLANDS

MOTOR YACHT

ENCHANTMENT



The 43m motor yacht **ENCHANTMENT**, built by **CRN** in 2013, combines Italian pedigree with modern amenities. She underwent an extensive refit in 2024, leaving her in immaculate, turnkey condition. With a beam of 8.65m and a gross tonnage of 456 GT, she offers generous interior volumes rarely found in her size category. Her layout accommodates up to 12 guests in 5 staterooms, including a main-deck master suite with private balcony, two VIP cabins, and two twin cabins. Up to 9 crew are housed in a separate area, ensuring the highest level of service and guest privacy.

ENCHANTMENT's exterior spaces are designed for relaxation and socializing: a sun deck with Jacuzzi and circular dining table, an upper deck lounge with panoramic views, a shaded main deck aft lounge, and a beach club with direct access to the swim platform. Additional amenities include a gym, elevator, and zero-speed stabilizers for maximum comfort at anchor.

Powered by twin Caterpillar C32-ACERT engines (1,499 hp each), **ENCHANTMENT** cruises smoothly with a range of 4,700 nautical miles at 10 knots and reaches a top speed of 15 knots.

With commercial compliance, low engine hours, and a fresh refit, **ENCHANTMENT** presents a rare opportunity to acquire a yacht in exceptional condition, equally suited for private use or charter operations.

[see more information about M/Y ENCHANTMENT at www.nauyachts.com](http://www.nauyachts.com)

SPECIFICATION

SHIPYARD, MODEL	CRN Navetta 43
BUILT	2013
LENGTH	43 m
WATERLINE LENGTH	39.71 m
HULL CONFIGURATION	DISPLACEMENT
BEAM	8.65 m
RANGE	4700
DRAFT	2.35 m
GROSS TONNAGE	456 GT
YACHT CLASS	RINA
CABINS	5+5
MASTER CABIN	MAIN DECK
GUESTS	12
BERTHS	12+9
CREW	9
HEADS	6+5

EXTERIOR DESIGN	ZUCCON INTERNATIONAL PROJECT
INTERIOR DESIGN	ZUCCON INTERNATIONAL PROJECT
HULL	GRP
SUPERSTRUCTURE	GRP
ENGINES	2 x CAT C32 1600 h.p.
TYPE OF DRIVE	SHAFT LINE
ENGINE HOURS	4530 h
MAXIMUM SPEED	15 kn
CRUISING SPEED	13 kn
FUEL CONSUMPTION AT ECONOMICAL SPEED	~ 200 l/h
FUEL	45000 l
GREY WATER	N/A
BLACK WATER	N/A
FRESH WATER	7000 l
DISPLACEMENT	330

[see more information about M/Y ENCHANTMENT at www.nauyachts.com](http://www.nauyachts.com)



EXTERIOR CRN NAVETTA 43 2013 MY
ENCHANTMENT

M/Y ENCHANTMENT



EXTERIOR CRN NAVETTA 43 2013 MY
ENCHANTMENT

M/Y ENCHANTMENT



EXTERIOR CRN NAVETTA 43 2013 MY
ENCHANTMENT

M/Y ENCHANTMENT



SUNDECK LOUNGE AREA

M/Y ENCHANTMENT



BOW LOUNGE AREA

M/Y ENCHANTMENT



AFT UPPER DECK LOUNGE AREA

M/Y ENCHANTMENT



AFT UPPER DECK DINING AREA

M/Y ENCHANTMENT



AFT MAIN DECK LOUNGE AREA

M/Y ENCHANTMENT



MAIN SALON LOUNGE AREA

M/Y ENCHANTMENT



MAIN SALON DINING AREA

M/Y ENCHANTMENT



MASTER CABIN

M/Y ENCHANTMENT



MASTER CABIN

M/Y ENCHANTMENT



MASTER CABIN

M/Y ENCHANTMENT



MASTER BATHROOM

M/Y ENCHANTMENT



MASTER BATHROOM

M/Y ENCHANTMENT



VIP CABIN

M/Y ENCHANTMENT



GUEST CABIN

M/Y ENCHANTMENT



GUEST CABIN

M/Y ENCHANTMENT



UPPER DECK SALOON

M/Y ENCHANTMENT



UPPER DECK SALOON

M/Y ENCHANTMENT



MAIN HELM STATION

M/Y ENCHANTMENT



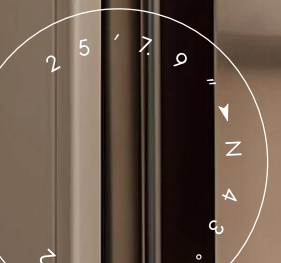
GYM

M/Y ENCHANTMENT

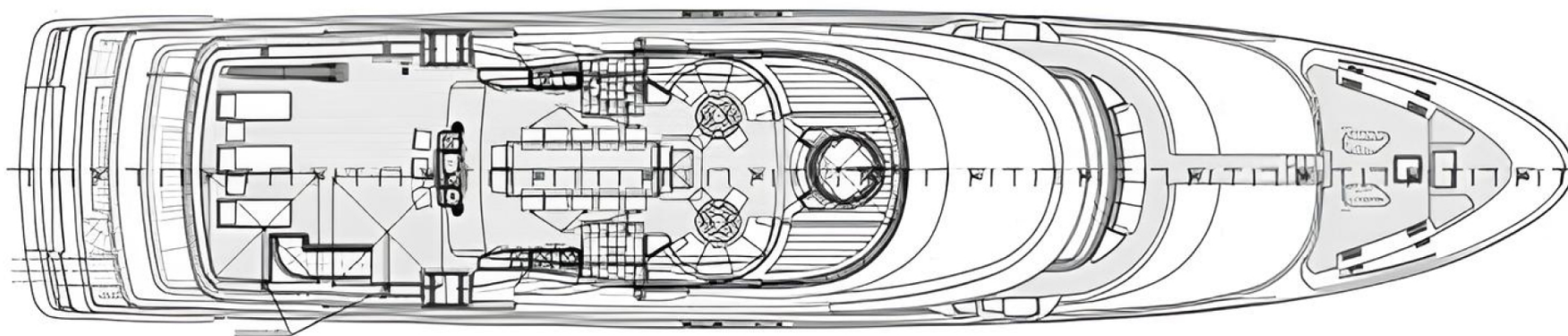


GARAGE

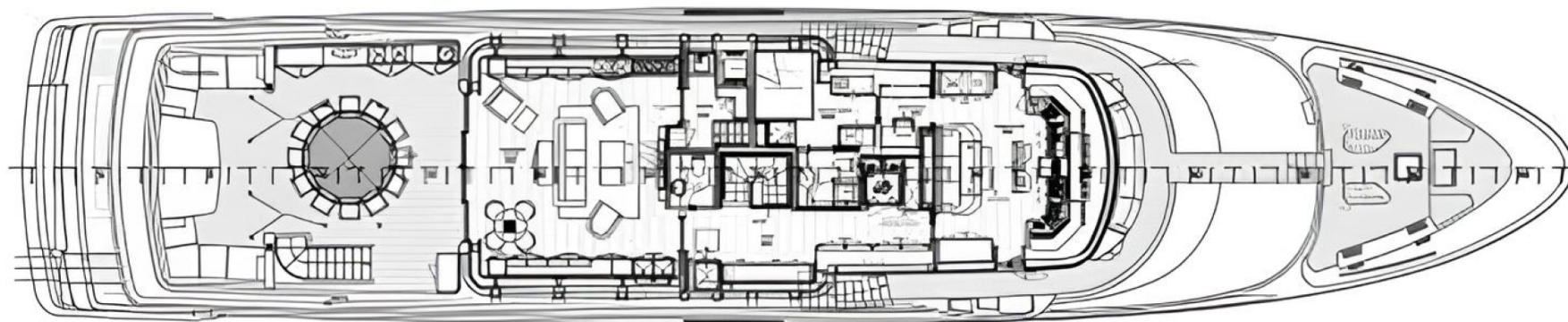
M/Y ENCHANTMENT



General Arrangement



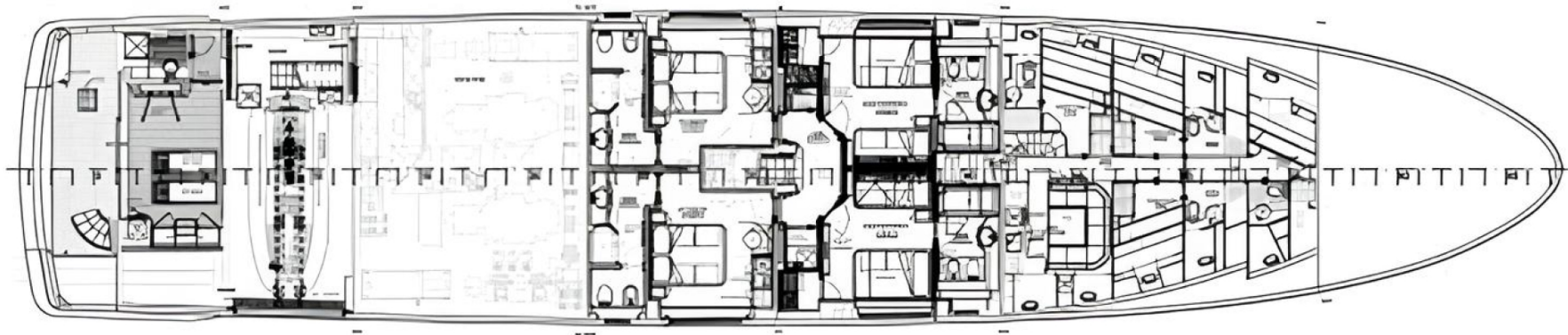
SUNDECK



UPPER DECK



MAIN DECK



LOWER DECK



KIRILL KUATOV

+377 607 93 15 20

+39 333 576 44 44

 [Send e-mail](#)

 WhatsApp

 Telegram