



New Build

NAU
YACHTS

SEDICI

MOTOR YACHT RIVA 25.29M 2025

€6,500,000
FLAG - MALTA

MOTOR YACHT

SEDICI



Launched in 2025, **SEDICI** is a striking **Riva 82' Diva** with a Shark Grey hull accented in Bright Black, highlighting the iconic Italian design and elegance for which **Riva** is renowned.

She is powered by twin MAN V12 engines of 1,900 hp each, complemented by gyroscopic stabilizers and fins for maximum comfort on the water. Top speed reaches 31 knots, with a cruising speed of 27 knots.

The interior features rosewood, custom upholstery, and marble surfaces, creating a luxurious and contemporary atmosphere. She accommodates 8 guests in 4 cabins, including a full-beam owner's suite, a VIP cabin, and 2 guest cabins. Service is provided by a professional 2-member crew. Modern amenities include high-speed internet, advanced audio-visual systems, electric blinds, and a multimedia setup with a gaming console.

SEDICI is equipped with super tropical air conditioning, upgraded generators, water maker and softener, and is ready for Starlink connectivity. Her garage houses a Williams SportJet 395 tender and dedicated storage and charging stations for Seabobs and other water toys.

With minimal engine hours since launch, **SEDICI** is in pristine condition, offering a rare opportunity to acquire a ready-to-go 2025 **Riva 82' Diva** without waiting for new build.

[see more information about M/Y SEDICI at www.nauyachts.com](http://www.nauyachts.com)

SPECIFICATION

SHIPYARD, MODEL	Riva 82' Diva
BUILT	2025
LENGTH	25.29 m
WATERLINE LENGTH	21.14 m
HULL CONFIGURATION	PLANING
BEAM	5.96 m
RANGE	300
DRAFT	2.05 m
GROSS TONNAGE	90 GT
YACHT CLASS	RINA
CABINS	4+2
MASTER CABIN	LOWER DECK
GUESTS	8
BERTHS	8+2
CREW	2
HEADS	4+1

EXTERIOR DESIGN	OFFICINA ITALIANA DESIGN
INTERIOR DESIGN	OFFICINA ITALIANA DESIGN
HULL	GRP
SUPERSTRUCTURE	GRP
ENGINES	2 x MAN V12 1900 h.p.
TYPE OF DRIVE	SHAFT LINE
ENGINE HOURS	139 h
MAXIMUM SPEED	31 kn
CRUSING SPEED	27 kn
FUEL CONSUMPTION AT ECONOMICAL SPEED	N/A
FUEL	6400 l
GREY WATER	N/A
BLACK WATER	N/A
FRESH WATER	1100 l
DISPLACEMENT	77.5

[see more information about M/Y SEDICI at www.nauyachts.com](http://www.nauyachts.com)



EXTERIOR RIVA 82' DIVA 2025 MY SEDICI

M/Y SEDICI



EXTERIOR RIVA 82' DIVA 2025 MY SEDICI

M/Y SEDICI



EXTERIOR RIVA 82' DIVA 2025 MY SEDICI

M/Y SEDICI



EXTERIOR RIVA 82' DIVA 2025 MY SEDICI

M/Y SEDICI



EXTERIOR RIVA 82' DIVA 2025 MY SEDICI

M/Y SEDICI



EXTERIOR RIVA 82' DIVA 2025 MY SEDICI

M/Y SEDICI



BOW AREA

M/Y SEDICI



AFT AREA

M/Y SEDICI



BOW LOUNGE AREA

M/Y SEDICI



FLYBRIDGE

M/Y SEDICI



SECOND HELM STATION

M/Y SEDICI



FLYBRIDGE DINING AREA

M/Y SEDICI



STARBOARD

M/Y SEDICI



COCKPIT DINING AREA

M/Y SEDICI



SEABOBS

M/Y SEDICI



MAIN SALON LOUNGE AREA

M/Y SEDICI



MAIN SALON LOUNGE AREA

M/Y SEDICI



MAIN SALON LOUNGE AREA

M/Y SEDICI



MAIN SALON LOUNGE AREA

M/Y SEDICI



MAIN SALON DINING AREA

M/Y SEDICI



MAIN SALON DINING AREA

M/Y SEDICI



GALLEY

M/Y SEDICI



MAIN HELM STATION

M/Y SEDICI



MAIN HELM STATION

M/Y SEDICI



MASTER CABIN

M/Y SEDICI



MASTER CABIN

M/Y SEDICI



MASTER BATHROOM

M/Y SEDICI



MASTER BATHROOM

M/Y SEDICI



VIP CABIN

M/Y SEDICI



VIP BATHROOM

M/Y SEDICI



GUEST CABIN

M/Y SEDICI



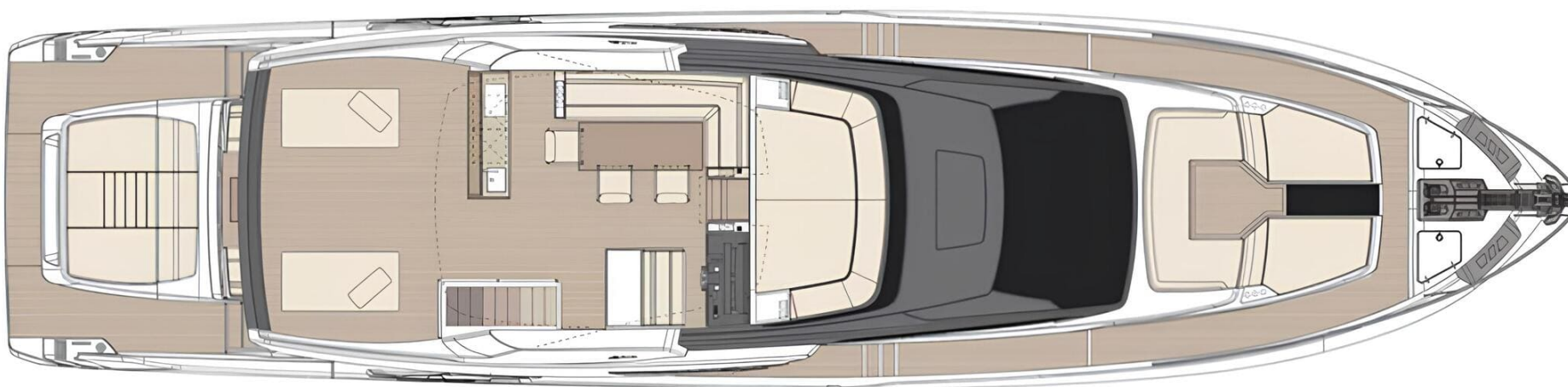
GUEST BATHROOM

M/Y SEDICI

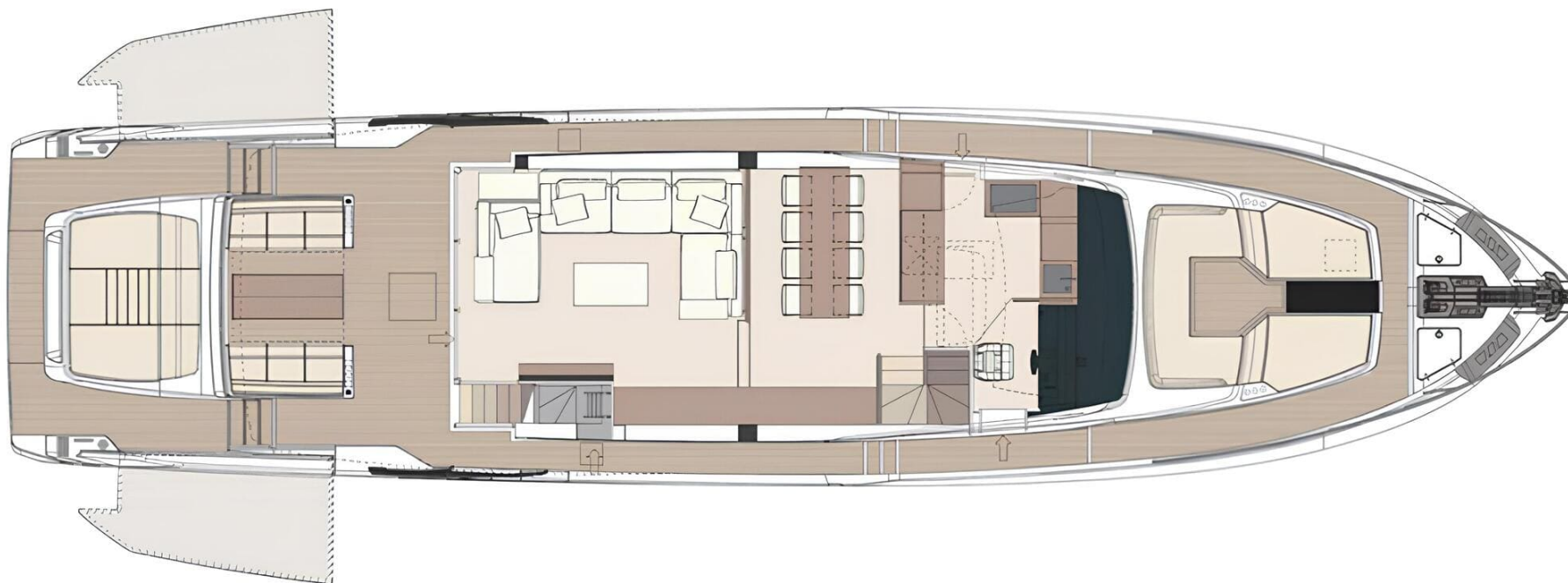
General Arrangement



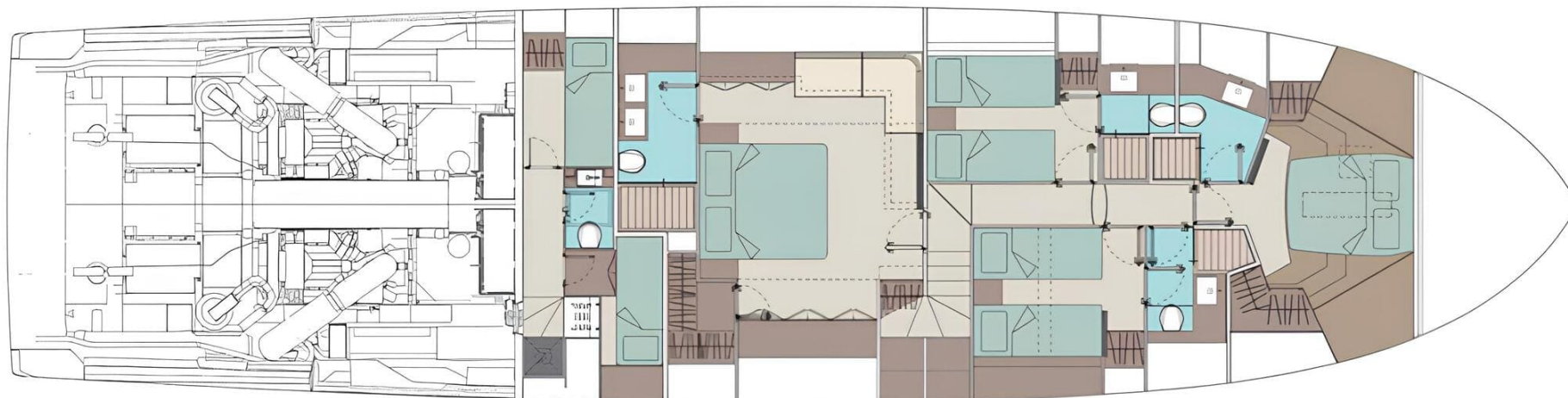
PROFILE



FLYBRIDGE



MAIN DECK



LOWER DECK



KIRILL KUATOV

+377 607 93 15 20

+39 333 576 44 44

 [Send e-mail](#)

 WhatsApp

 Telegram