



Brokerage

NAU
YACHTS

ALADDIN

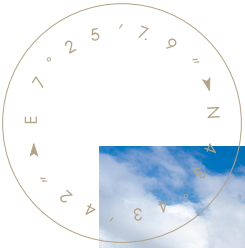
MOTOR YACHT SUNSEEKER 40.05M 2017

€13,500,000 (VAT
paid)

FLAG - MALTA

MOTOR YACHT

ALADDIN



Built in 2017, **ALADDIN** has only ever been used privately, benefits from EU VAT paid, and has been regularly maintained. Constructed with a GRP hull and superstructure and teak decks, she offers semi-displacement performance powered by twin MTU 12V 4000 M93 engines delivering a top speed of 22 knots and a comfortable cruising speed of 16 knots. Zero-speed stabilisers ensure smooth operation both underway and at anchor.

Accommodation is for 12 guests in five cabins, including a full-beam main-deck master suite, two VIP cabins and two convertible twin cabins on the lower deck. Crew quarters for eight ensure a high level of service and guest privacy. The interior features a contemporary design with large windows and spacious lounge areas. Her exterior decks provide multiple areas for relaxation and dining, including a sundeck with sunbathing and dining space and generous lounges on the aft main and upper decks. A comprehensive selection of tenders and water toys, combined with an RYA training centre certification, make **ALADDIN** perfectly suited to both family cruising and charter operations.

With low engine hours, an extended specification compared to the standard model, VAT paid status and impeccable technical condition, **ALADDIN** represents a rare opportunity to acquire one of the finest **Sunseeker 131** Yachts currently on the market.

[see more information about M/Y ALADDIN at www.nauyachts.com](http://www.nauyachts.com)

SPECIFICATION

SHIPYARD, MODEL	Sunseeker 131
BUILT	2017
LENGTH	40.05 m
WATERLINE LENGTH	31.19 m
HULL CONFIGURATION	SEMI-DISPLACEMENT
BEAM	8.09 m
RANGE	983
DRAFT	2.7 m
GROSS TONNAGE	340 GT
YACHT CLASS	RINA
CABINS	5+4
MASTER CABIN	MAIN DECK
GUESTS	12
BERTHS	12+8
CREW	8
HEADS	6+4

EXTERIOR DESIGN	SUNSEEKER YACHTS
INTERIOR DESIGN	SUNSEEKER YACHTS
HULL	GRP
SUPERSTRUCTURE	GRP
ENGINES	2 x 12V 4000 M93 MTU 3180 h.p.
TYPE OF DRIVE	SHAFT LINE
ENGINE HOURS	1500 h
MAXIMUM SPEED	22 kn
CRUISING SPEED	16 kn
FUEL CONSUMPTION AT ECONOMICAL SPEED	N/A
FUEL	26700 l
GREY WATER	1350 l
BLACK WATER	1540 l
FRESH WATER	4950 l
DISPLACEMENT	230

[see more information about M/Y ALADDIN at www.nauyachts.com](http://www.nauyachts.com)



EXTERIOR SUNSEEKER 131 2017 MY ALADDIN

M/Y ALADDIN



EXTERIOR SUNSEEKER 131 2017 MY ALADDIN

M/Y ALADDIN



EXTERIOR SUNSEEKER 131 2017 MY ALADDIN

M/Y ALADDIN



EXTERIOR SUNSEEKER 131 2017 MY ALADDIN

M/Y ALADDIN



EXTERIOR SUNSEEKER 131 2017 MY ALADDIN

M/Y ALADDIN



EXTERIOR SUNSEEKER 131 2017 MY ALADDIN

M/Y ALADDIN



AFT AREA

M/Y ALADDIN



AFT AREA

M/Y ALADDIN



BOW AREA

M/Y ALADDIN



SUNDECK LOUNGE AREA

M/Y ALADDIN



SUNDECK LOUNGE AREA

M/Y ALADDIN



BOW LOUNGE AREA

M/Y ALADDIN



BOW LOUNGE AREA

M/Y ALADDIN



BOW LOUNGE AREA

M/Y ALADDIN



AFT UPPER DECK LOUNGE AREA

M/Y ALADDIN



AFT UPPER DECK DINING AREA

M/Y ALADDIN



AFT MAIN DECK LOUNGE AREA

M/Y ALADDIN



MAIN SALON LOUNGE AREA

M/Y ALADDIN



MAIN SALON LOUNGE AREA

M/Y ALADDIN



MAIN SALON LOUNGE AREA

M/Y ALADDIN



MAIN SALON DINING AREA

M/Y ALADDIN



MAIN SALON LOBBY

M/Y ALADDIN



MASTER CABIN

M/Y ALADDIN



MASTER CABIN

M/Y ALADDIN



MASTER CABIN

M/Y ALADDIN



MASTER CABIN LOUNGE AREA

M/Y ALADDIN



MASTER CABIN

M/Y ALADDIN



MASTER BATHROOM

M/Y ALADDIN



STAIRS FROM MD TO LD

M/Y ALADDIN



VIP CABIN

M/Y ALADDIN



VIP CABIN

M/Y ALADDIN



VIP CABIN

M/Y ALADDIN



VIP CABIN

M/Y ALADDIN



VIP BATHROOM

M/Y ALADDIN



GUEST CABIN

M/Y ALADDIN



UPPER DECK SALOON

M/Y ALADDIN



UPPER DECK SALOON

M/Y ALADDIN



UPPER DECK SALOON

M/Y ALADDIN



GALLEY

M/Y ALADDIN



GALLEY

M/Y ALADDIN



MAIN HELM STATION

M/Y ALADDIN



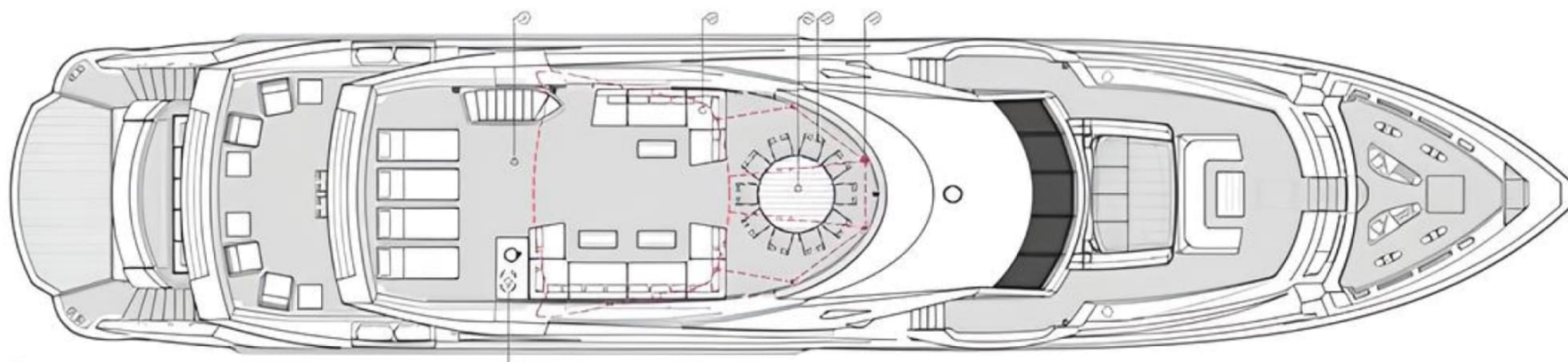
SWIMMING PLATFORM AND WATER TOYS

M/Y ALADDIN

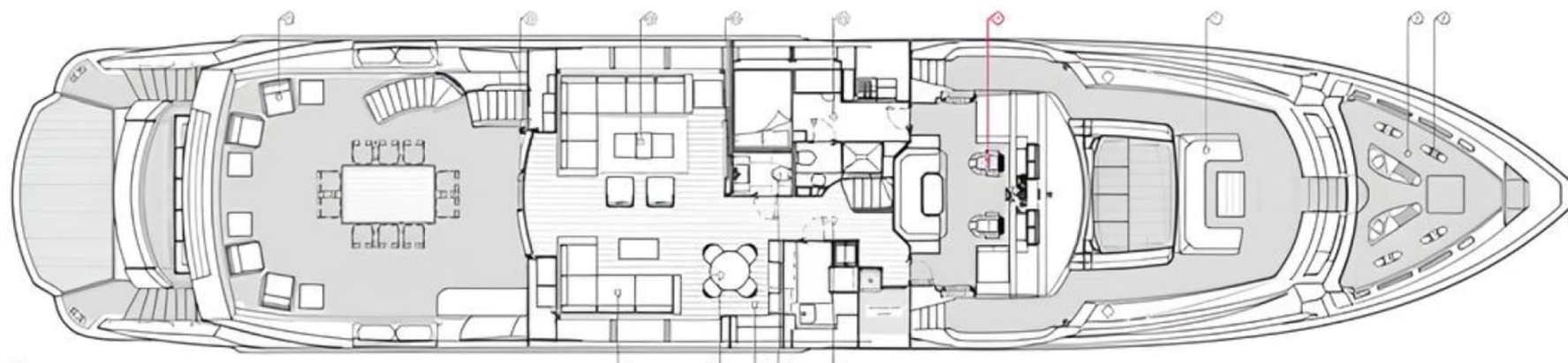
General Arrangement



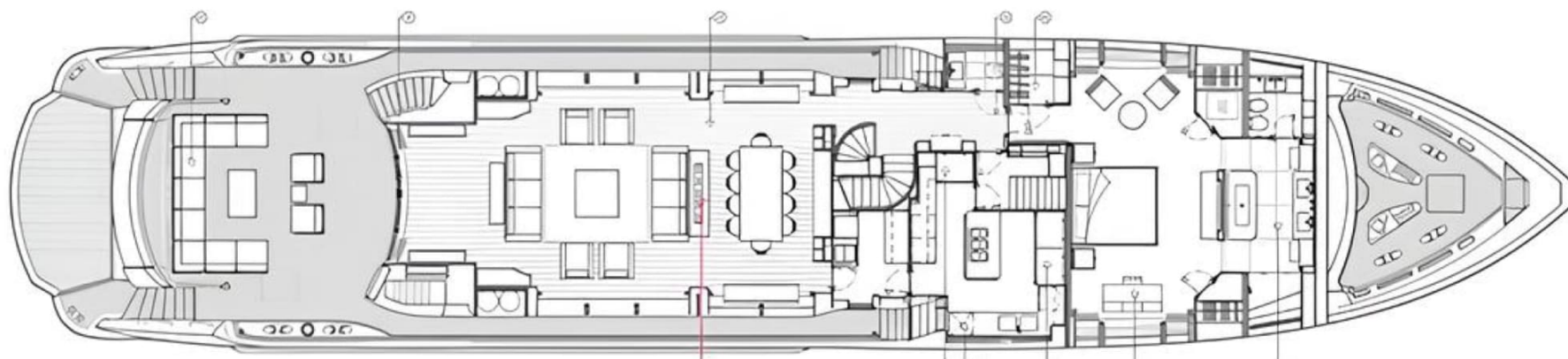
PROFILE



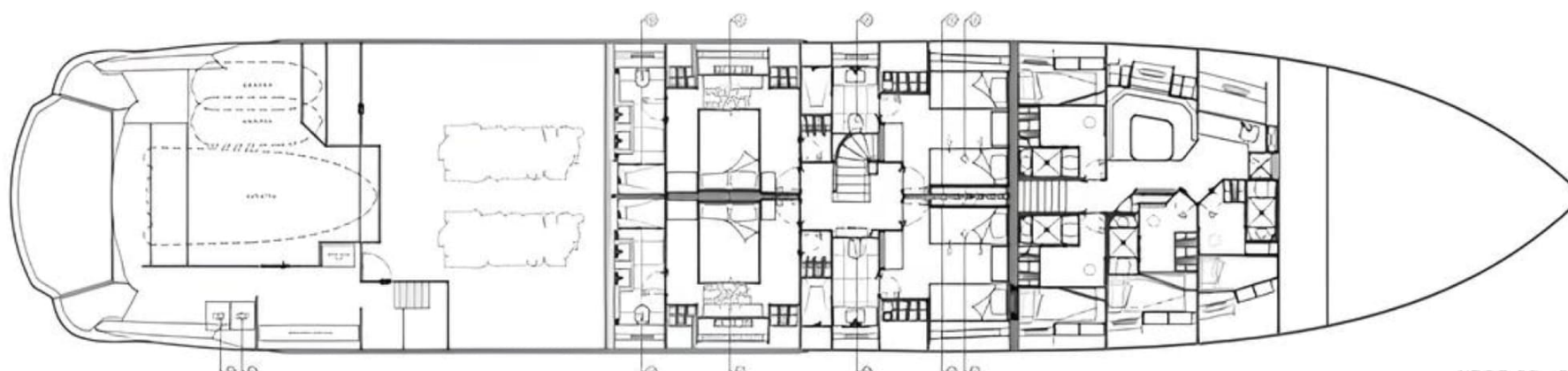
SUNDECK



UPPER DECK



MAIN DECK



LOWER DECK



KIRILL KUATOV

+377 607 93 15 20

+39 333 576 44 44

 [Send e-mail](#)

 WhatsApp

 Telegram