



Brokerage

NAU
YACHTS

SMOOTH OPERATOR

MOTOR YACHT

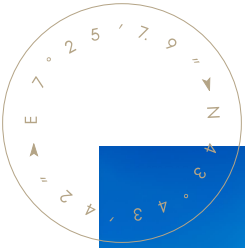
CUSTOM BUILT 39M

2011

€8,550,000
FLAG - MALTA

MOTOR YACHT

SMOOTH OPERATOR



Built in 2011 to RINA LY2 standards, **SMOOTH OPERATOR** features a semi-displacement aluminium hull and is powered by twin MTU 16V M93 4000 engines, delivering a top speed of 26.4 knots and a cruising speed of 12 knots. Accommodation is for 10 guests in five cabins, including a full-beam master suite on the main deck with access to a private gym and steam room. The lower deck houses two VIP cabins and two twin cabins with en-suite bathrooms, ensuring comfort and privacy for all guests. Exterior spaces include a semi-covered flybridge with bar, lounge, and sunbathing area, as well as a cockpit lounge. The garage accommodates a 4.5m tender and a full range of water toys, including a Castoldi jet ski and Sea-Doo personal watercraft. Additional features include a Sonos audio system, TVs, and modern security cameras. With ample fuel and water capacity, the yacht is well-equipped for long-range cruising.

see more information about M/Y SMOOTH OPERATOR at www.nauyachts.com

SPECIFICATION

SHIPYARD, MODEL	Custom Built 39M
BUILT	2011
LENGTH	39 m
WATERLINE LENGTH	34.46 m
HULL CONFIGURATION	SEMI-DISPLACEMENT
BEAM	7.8 m
RANGE	2800
DRAFT	2.2 m
GROSS TONNAGE	320 GT
YACHT CLASS	RINA
CABINS	5+3
MASTER CABIN	MAIN DECK
GUESTS	10
BERTHS	10+5
CREW	5
HEADS	6+3

EXTERIOR DESIGN	GUIDO DE GROOT DESIGN
INTERIOR DESIGN	GUIDO DE GROOT DESIGN
HULL	ALUMINUM
SUPERSTRUCTURE	ALUMINIUM
ENGINES	2 x MTU 16V M93 4200 h.p.
TYPE OF DRIVE	SHAFT LINE
ENGINE HOURS	3762 h
MAXIMUM SPEED	26.4 kn
CRUSING SPEED	12 kn
FUEL CONSUMPTION AT ECONOMICAL SPEED	N/A
FUEL	44500 l
GREY WATER	1600 l
BLACK WATER	1000 l
FRESH WATER	7000 l
DISPLACEMENT	320

[see more information about M/Y SMOOTH OPERATOR at www.nauyachts.com](http://www.nauyachts.com)



EXTERIOR JONGERT 39M 2011 MY SMOOTH
OPERATOR

M/Y SMOOTH OPERATOR



EXTERIOR JONGERT 39M 2011 MY SMOOTH
OPERATOR

M/Y SMOOTH OPERATOR



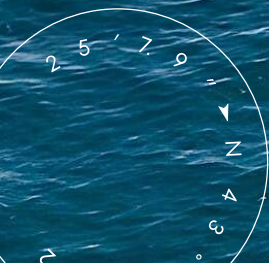
EXTERIOR JONGERT 39M 2011 MY SMOOTH
OPERATOR

M/Y SMOOTH OPERATOR



EXTERIOR JONGERT 39M 2011 MY SMOOTH
OPERATOR

M/Y SMOOTH OPERATOR



EXTERIOR JONGERT 39M 2011 MY SMOOTH
OPERATOR

M/Y SMOOTH OPERATOR



EXTERIOR JONGERT 39M 2011 MY SMOOTH
OPERATOR

M/Y SMOOTH OPERATOR



EXTERIOR JONGERT 39M 2011 MY SMOOTH
OPERATOR

M/Y SMOOTH OPERATOR



BOW LOUNGE AREA

M/Y SMOOTH OPERATOR



BOW AREA

M/Y SMOOTH OPERATOR





FLYBRIDGE AFT SUNBATHING AREA

M/Y SMOOTH OPERATOR



FLYBRIDGE AFT SUNBATHING AREA

M/Y SMOOTH OPERATOR



FLYBRIDGE AFT SUNBATHING AREA

M/Y SMOOTH OPERATOR



FLYBRIDGE LOUNGE AREA

M/Y SMOOTH OPERATOR



FLYBRIDGE LOUNGE AREA

M/Y SMOOTH OPERATOR



FLYBRIDGE LOUNGE AREA

M/Y SMOOTH OPERATOR



FLYBRIDGE BAR

M/Y SMOOTH OPERATOR



FLYBRIDGE BAR

M/Y SMOOTH OPERATOR



SECOND HELM STATION

M/Y SMOOTH OPERATOR



GARAGE

M/Y SMOOTH OPERATOR



MAIN SALON LOUNGE AREA

M/Y SMOOTH OPERATOR



MAIN SALON LOUNGE AREA

M/Y SMOOTH OPERATOR



MAIN SALON LOUNGE AREA

M/Y SMOOTH OPERATOR



MAIN SALON LOUNGE AREA

M/Y SMOOTH OPERATOR



MAIN SALON DINING AREA

M/Y SMOOTH OPERATOR



MAIN SALON DINING AREA

M/Y SMOOTH OPERATOR



MAIN HELM STATION

M/Y SMOOTH OPERATOR



MAIN HELM STATION

M/Y SMOOTH OPERATOR



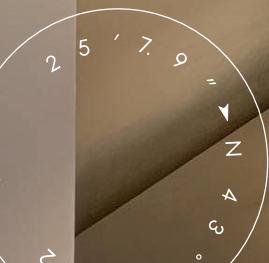
GALLEY

M/Y SMOOTH OPERATOR



GALLEY

M/Y SMOOTH OPERATOR



MASTER CABIN

M/Y SMOOTH OPERATOR



MASTER CABIN

M/Y SMOOTH OPERATOR



MASTER CABIN

M/Y SMOOTH OPERATOR



MASTER CABIN

M/Y SMOOTH OPERATOR



MASTER BATHROOM

M/Y SMOOTH OPERATOR



GUEST CABIN

M/Y SMOOTH OPERATOR



GUEST CABIN

M/Y SMOOTH OPERATOR



GUEST CABIN

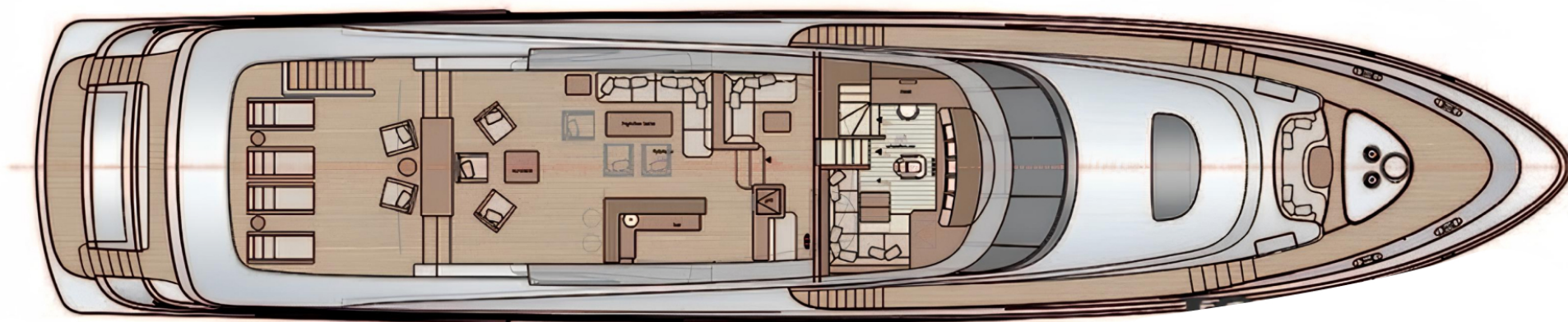
M/Y SMOOTH OPERATOR



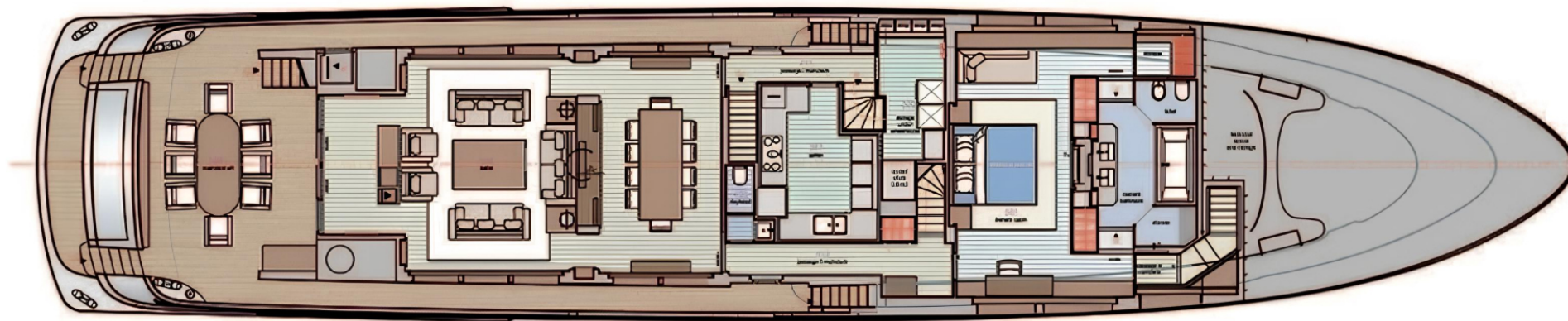
GUEST BATHROOM

M/Y SMOOTH OPERATOR

General Arrangement



FLYBRIDGE



MAIN DECK



LOWER DECK



KIRILL KUATOV

+377 607 93 15 20

+39 333 576 44 44

 [Send e-mail](#)

 WhatsApp

 Telegram