



New Build

NAU
YACHTS

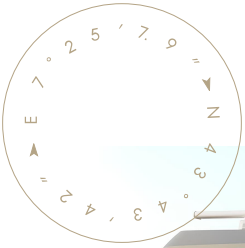
PROJECT EVITA

MOTOR YACHT HEESSEN 56.7M 2027

FLAG -

MOTOR YACHT

PROJECT EVITA



This brand-new 57-meter aluminium yacht marks the first in the **5700 Aluminium Class by Heesen**. Her lightweight aluminium hull with Van Oossanen's Fast Displacement Hull Form delivers a top speed of 22 knots with exceptional fuel efficiency.

An extended profile and a shallow draft of 2.3 m allow access to cruising grounds such as the Bahamas. With an interior volume of 780 GT, she accommodates 12 guests in six cabins and a crew of 13 in seven cabins.

Highlights include an elevator, generous storage for tenders and water toys, and modern amenities across spacious exterior decks. Delivery is scheduled 36 months from contract signing.

This model offers a rare opportunity to acquire a high-performance **Heesen** superyacht with customization options, cutting-edge engineering, and enhanced onboard space.

[see more information about M/Y PROJECT EVITA at www.nauyachts.com](http://www.nauyachts.com)

SPECIFICATION

SHIPYARD, MODEL	Heesen YN 21557
DELIVERY AT THE SHIPYARD	2027
LENGTH	56.7 m
WATERLINE LENGTH	52.12 m
HULL CONFIGURATION	SEMI-DISPLACEMENT
BEAM	10.45 m
RANGE	3900
DRAFT	2.3 m
GROSS TONNAGE	780 GT
YACHT CLASS	LLOYD'S
CABINS	6+7
MASTER CABIN	MAIN DECK
GUESTS	12
BERTHS	12+13
CREW	13
HEADS	8+7

EXTERIOR DESIGN	OMEGA ARCHITECTS
INTERIOR DESIGN	HARRISON EIDSGAARD
HULL	ALUMINUM
SUPERSTRUCTURE	ALUMINIUM
ENGINES	2 x MTU 16V 4000 M65L 3433 h.p.
TYPE OF DRIVE	SHAFT LINE
ENGINE HOURS	N/A
MAXIMUM SPEED	21.5 kn
CRUISING SPEED	16 kn
FUEL CONSUMPTION AT ECONOMICAL SPEED	N/A
FUEL	80000 l
GREY WATER	N/A
BLACK WATER	N/A
FRESH WATER	22000 l
DISPLACEMENT	490

[see more information about M/Y PROJECT EVITA at www.nauyachts.com](http://www.nauyachts.com)



EXTERIOR HEESEN YN 21557 2027 PROJECT
EVITA

M/Y PROJECT EVITA



EXTERIOR HEESEN YN 21557 2027 PROJECT
EVITA

M/Y PROJECT EVITA



EXTERIOR HEESEN YN 21557 2027 PROJECT
EVITA

M/Y PROJECT EVITA



EXTERIOR HEESEN YN 21557 2027 PROJECT
EVITA

M/Y PROJECT EVITA



BOW AREA

M/Y PROJECT EVITA



AFT AREA

M/Y PROJECT EVITA



AFT AREA

M/Y PROJECT EVITA



AFT AREA

M/Y PROJECT EVITA



SUNDECK LOUNGE AREA

M/Y PROJECT EVITA



SUNDECK LOUNGE AREA

M/Y PROJECT EVITA



SUNDECK AFT SUNBATHING AREA

M/Y PROJECT EVITA



AFT UPPER DECK DINING AREA

M/Y PROJECT EVITA



AFT MAIN DECK SWIMMING POOL

M/Y PROJECT EVITA



AFT MAIN DECK SWIMMING POOL

M/Y PROJECT EVITA



UPPER DECK SALOON

M/Y PROJECT EVITA



UPPER DECK SALOON

M/Y PROJECT EVITA



UPPER DECK SALON BAR

M/Y PROJECT EVITA



MAIN SALON LOUNGE AREA

M/Y PROJECT EVITA



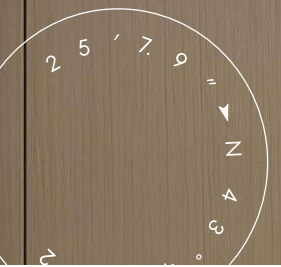
MAIN SALON LOUNGE AREA

M/Y PROJECT EVITA



MASTER CABIN

M/Y PROJECT EVITA



MAKE-UP TABLE IN MASTER CABIN

M/Y PROJECT EVITA



MASTER BATHROOM

M/Y PROJECT EVITA



CENTRAL STAIRCASE

M/Y PROJECT EVITA



VIP CABIN

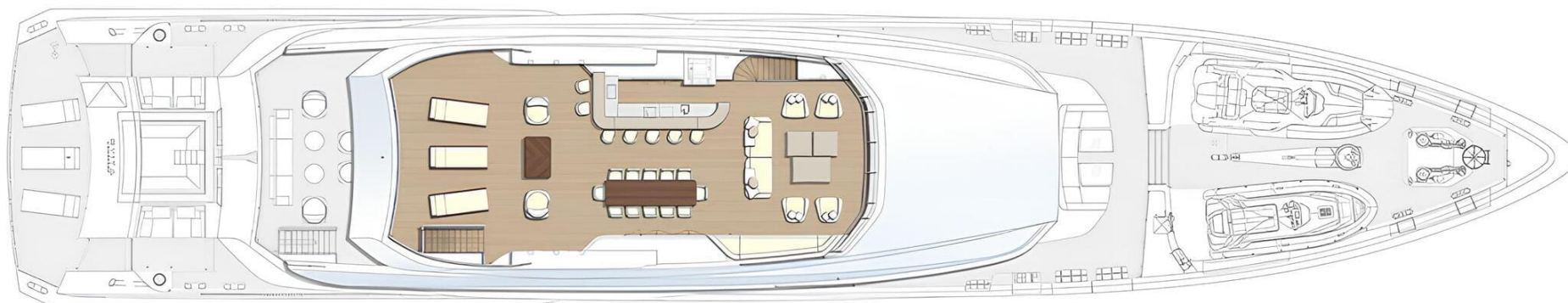
M/Y PROJECT EVITA



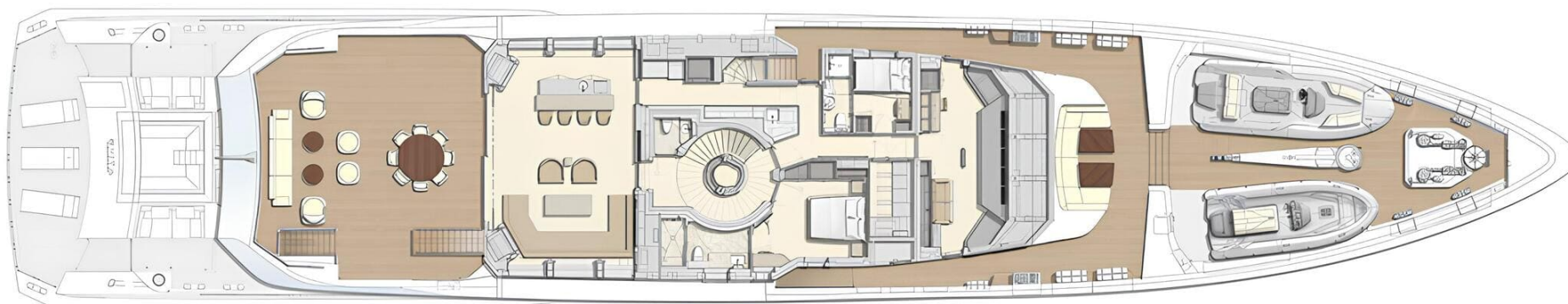
VIP CABIN

M/Y PROJECT EVITA

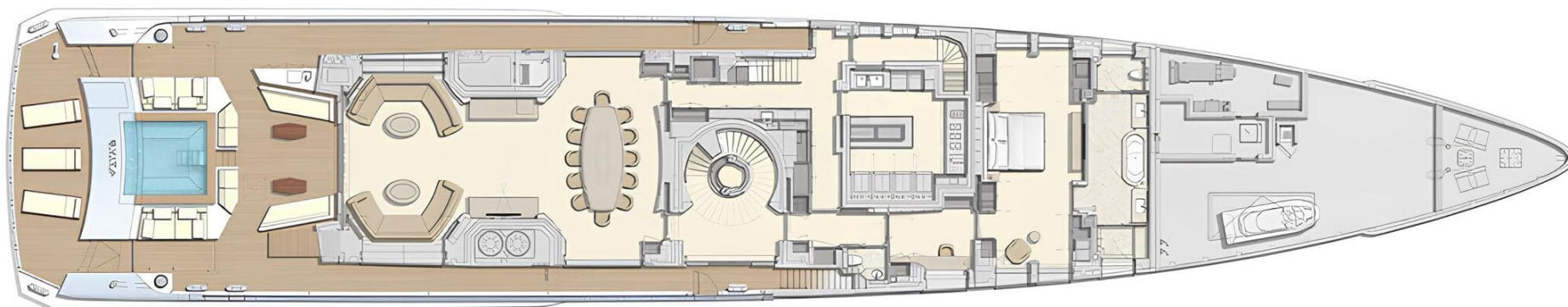
General Arrangement



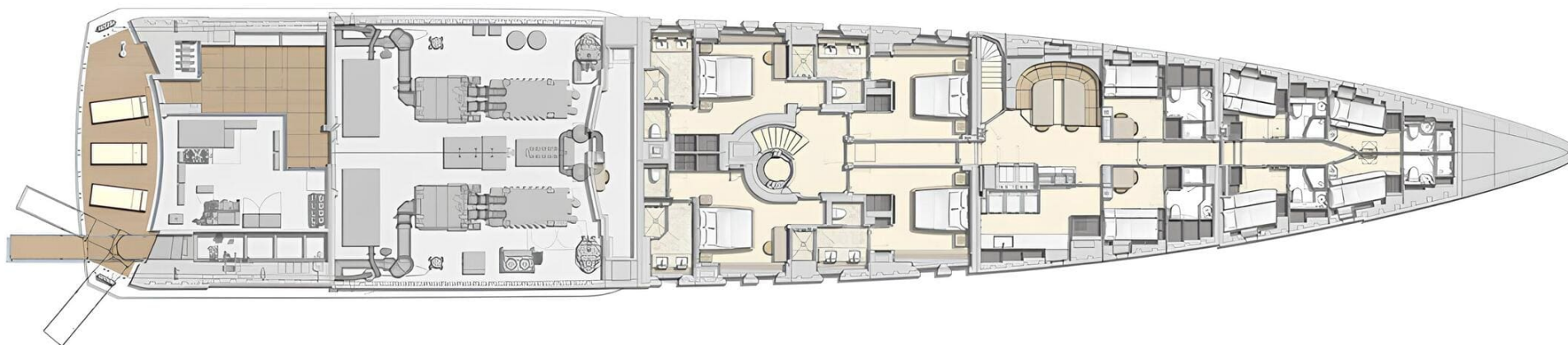
SUNDECK



UPPER DECK



MAIN DECK



LOWER DECK



KIRILL KUATOV

+377 607 93 15 20

+39 333 576 44 44

 [Send e-mail](#)

 WhatsApp

 Telegram

[More information about M/Y PROJECT EVITA at www.nauyachts.com](#)

[Watch video](#)