



Brokerage

NAU  
YACHTS

TURKS

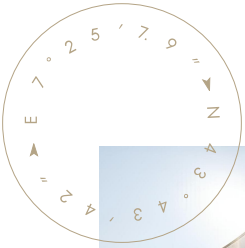
MOTOR YACHT BENETTI 36.5M 2023

€22,500,000

FLAG - MARSHALL ISLANDS

MOTOR YACHT

## TURKS



**TURKS** is a 36.5-metre **Benetti BYOND 37** motor yacht, delivered in 2023 as the second hull in the series and showcasing Benetti's fully bespoke approach to superyacht construction. Every detail was custom-specified – from the grey hull paint and UV-protected glazing to the lightweight Eulithe furniture on the sundeck. Her innovative layout offers an impressive interior volume of 420 GT. The aft terrace on the upper deck has been transformed into a private spa area with a sauna and steam room. The owner's apartment combines a master suite and two guest cabins with a private fingerprint-access entrance, marble floors, a fold-out balcony and an enlarged shower. Colorado Gold and Portoro marbles accent the interior décor. Accommodation is provided for up to 10 guests in five cabins, with quarters for nine crew including the captain's cabin on the upper deck. The garage accommodates a 6.5-metre tender and two 300-hp jet skis.

Built with a steel hull and aluminium superstructure, **TURKS** is powered by twin MAN V12 diesel engines of 1,400 hp each, delivering a maximum speed of 14 knots, a cruising speed of 12.5 knots and a transoceanic range of 5,000 nautical miles. She has a beam of 8.6 metres and a draft of 2.5 metres.

Presented in immaculate condition, **TURKS Benetti BYOND 37** represents a rare opportunity to acquire a customised, long-range superyacht under 40 metres.

[see more information about M/Y TURKS at www.nauyachts.com](http://www.nauyachts.com)

# SPECIFICATION

SHIPYARD, MODEL	Benetti B.Yond 37M
BUILT	2023
LENGTH	36.5 m
WATERLINE LENGTH	32.56 m
HULL CONFIGURATION	DISPLACEMENT
BEAM	8.3 m
RANGE	5000
DRAFT	2.5 m
GROSS TONNAGE	420 GT
YACHT CLASS	RINA
CABINS	5+5
MASTER CABIN	MAIN DECK
GUESTS	10
BERTHS	10+9
CREW	9
HEADS	6+5

EXTERIOR DESIGN	STEFANO RIGHINI
INTERIOR DESIGN	BENETTI DESIGN
HULL	STEEL
SUPERSTRUCTURE	ALUMINIUM
ENGINES	2 x MAN 1400 h.p.
TYPE OF DRIVE	SHAFT LINE
ENGINE HOURS	N/A
MAXIMUM SPEED	14 kn
CRUISING SPEED	12.5 kn
FUEL CONSUMPTION AT ECONOMICAL SPEED	N/A
FUEL	70000 l
GREY WATER	N/A
BLACK WATER	N/A
FRESH WATER	6000 l
DISPLACEMENT	360

[see more information about M/Y TURKS at www.nauyachts.com](http://www.nauyachts.com)





EXTERIOR BENETTI BYOND 37 2023 MY TURKS

M/Y TURKS





EXTERIOR BENETTI BYOND 37 2023 MY TURKS

M/Y TURKS





EXTERIOR BENETTI BYOND 37 2023 MY TURKS

M/Y TURKS





EXTERIOR BENETTI BYOND 37 2023 MY TURKS

M/Y TURKS





EXTERIOR BENETTI BYOND 37 2023 M/Y TURKS

M/Y TURKS





EXTERIOR BENETTI BYOND 37 2023 MY TURKS

M/Y TURKS





EXTERIOR BENETTI BYOND 37 2023 MY TURKS

M/Y TURKS





SUNDECK

M/Y TURKS





AFT UPPER DECK JACUZZI

M/Y TURKS





AFT MAIN DECK DINING AREA

M/Y TURKS





AFT MAIN DECK DINING AREA

M/Y TURKS





AFT MAIN DECK DINING AREA

M/Y TURKS





BOW LOUNGE AREA

M/Y TURKS





BOW LOUNGE AREA

M/Y TURKS





BEACH CLUB

M/Y TURKS





UPPER DECK SALOON

M/Y TURKS





MAIN SALON LOUNGE AREA

M/Y TURKS





MAIN SALON LOUNGE AREA

M/Y TURKS





MAIN SALON DINING AREA

M/Y TURKS





STAIRS FROM MD TO LD

M/Y TURKS





MASTER CABIN

M/Y TURKS





MASTER CABIN

M/Y TURKS





MASTER CABIN DRESSING ROOM

M/Y TURKS





OFFICE IN THE MASTER CABIN

M/Y TURKS





MASTER BATHROOM

M/Y TURKS





MASTER BATHROOM

M/Y TURKS





MASTER BATHROOM

M/Y TURKS





VIP CABIN

M/Y TURKS





VIP CABIN

M/Y TURKS





VIP BATHROOM

M/Y TURKS





VIP BATHROOM

M/Y TURKS





VIP CABIN

M/Y TURKS





VIP CABIN

M/Y TURKS





VIP CABIN

M/Y TURKS



# GALLEY

M/Y TURKS





GALLEY

M/Y TURKS





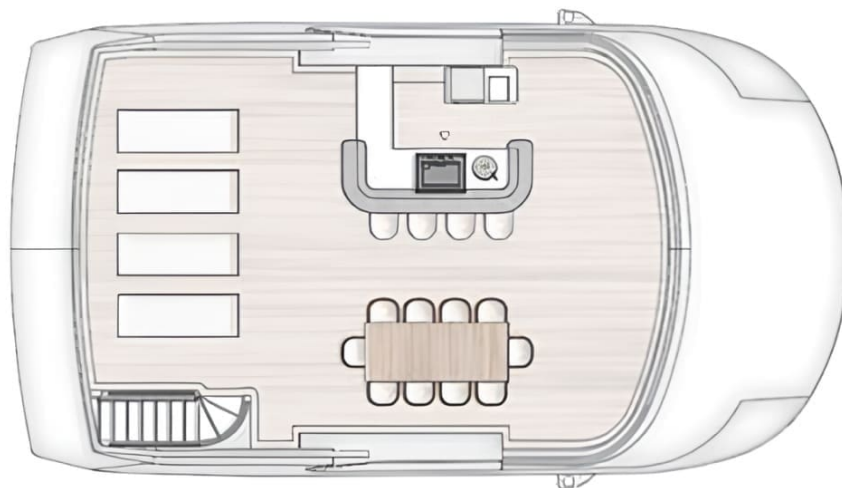
MAIN HELM STATION

M/Y TURKS



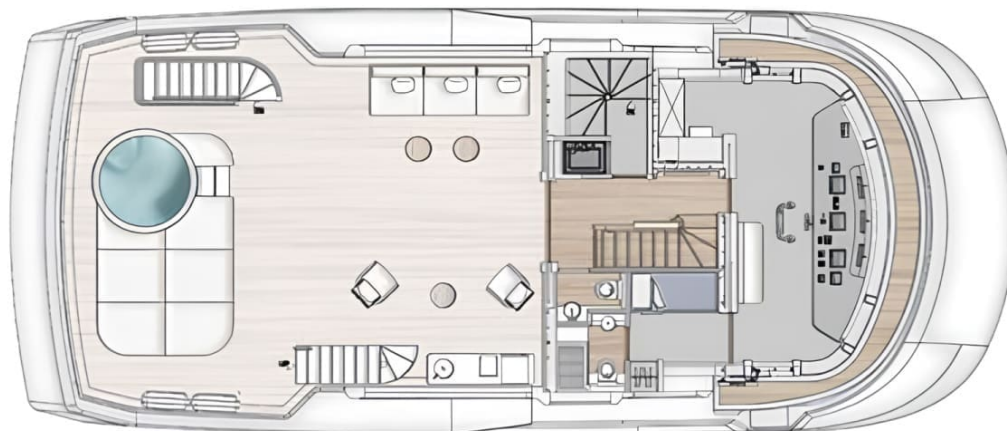
# General Arrangement





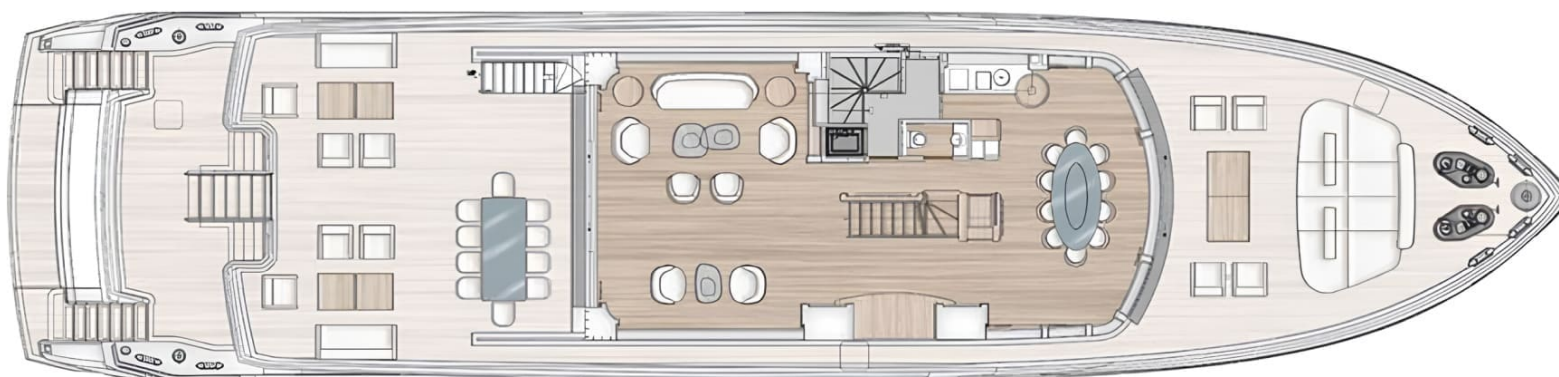
SUNDECK





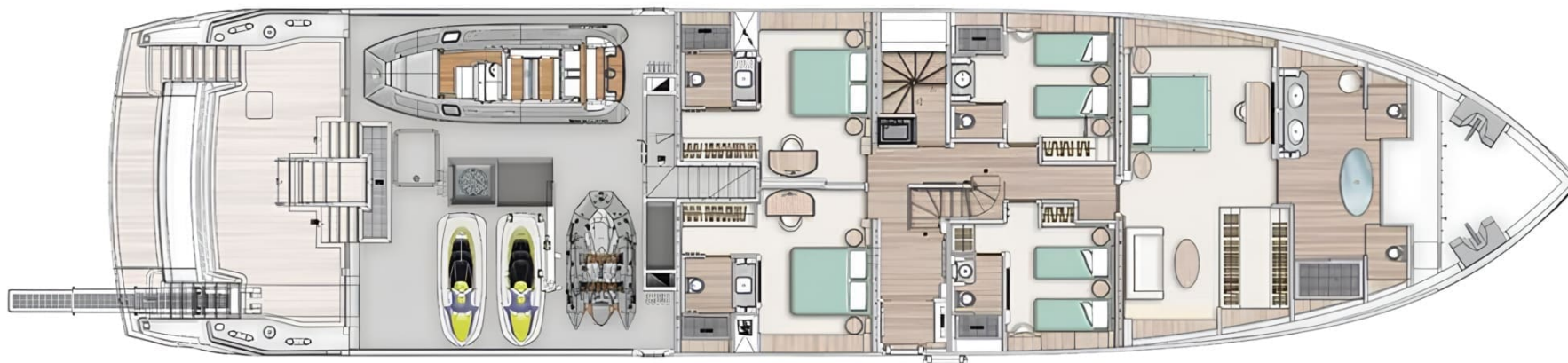
UPPER DECK





MAIN DECK





---

---

---

---

## LOWER DECK





## KIRILL KUATOV

+377 607 93 15 20

+39 333 576 44 44

 [Send e-mail](#)

 WhatsApp

 Telegram