



New Build

NAU
YACHTS

Y

MOTOR YACHT BENETTI 34.36M 2025

€17,500,000

FLAG - MARSHALL ISLANDS

MOTOR YACHT

Y



Y is a brand-new **Benetti Oasis 34M**, launched in May 2025. Outfitted with an extensive list of upgrades and custom options, she is among the most comprehensively equipped yachts in the series. Developed by Benetti in collaboration with the British studio **RWD**, the **Oasis 34M** concept is all about seamless connection with the sea. **Benetti's** signature **Oasis Deck** integrates a sea-level terrace, lounge areas and an infinity pool to create a fluid transition between interior and exterior living spaces.

The interior, designed by New York-based **Bonetti/Kozerski Architecture**, features a minimalist aesthetic in soft grey tones. High ceilings, full-height windows and an open layout flood the space with natural light and reinforce the yacht's connection to the water. **Y** accommodates up to 10 guests in five cabins, including a full-beam master suite on the main deck, two VIP cabins and two guest cabins on the lower deck – all with ensuite bathrooms. Separate crew quarters, including the captain's cabin on the upper deck, ensure a high level of service and privacy.

Built with a GRP hull and superstructure and teak decks, **Y** is powered by twin 1,380-hp MTU 10V 2000 M86 diesel engines, providing a cruising speed of 14 knots, a top speed of 16 knots and a range of 2,700 nautical miles at a gross tonnage of 269 GT. Representing a rare opportunity to acquire an almost-new **Benetti Oasis 34M** without the build wait, **Y** is fully prepared for immediate enjoyment.

[see more information about M/Y Y at www.nauyachts.com](http://www.nauyachts.com)

SPECIFICATION

| | |
|--------------------|-------------------|
| SHIPYARD, MODEL | Benetti Oasis 34M |
| BUILT | 2025 |
| LENGTH | 34.36 m |
| WATERLINE LENGTH | 33.3 m |
| HULL CONFIGURATION | DISPLACEMENT |
| BEAM | 7.5 m |
| RANGE | 2700 |
| DRAFT | 2.15 m |
| GROSS TONNAGE | 269 GT |
| YACHT CLASS | N/A |
| CABINS | 5+4 |
| MASTER CABIN | MAIN DECK |
| GUESTS | 10 |
| BERTHS | 10+7 |
| CREW | 7 |
| HEADS | 6+4 |

| | |
|--------------------------------------|--------------------------------|
| EXTERIOR DESIGN | RWD |
| INTERIOR DESIGN | BONETTI KOZERSKI ARCHITECTURE |
| HULL | GRP |
| SUPERSTRUCTURE | GRP |
| ENGINES | 2 x MTU 10V 2000 M86 1380 h.p. |
| TYPE OF DRIVE | SHAFT LINE |
| ENGINE HOURS | N/A |
| MAXIMUM SPEED | 16 kn |
| CRUISING SPEED | 14 kn |
| FUEL CONSUMPTION AT ECONOMICAL SPEED | N/A |
| FUEL | 25000 l |
| GREY WATER | 3000 l |
| BLACK WATER | 3000 l |
| FRESH WATER | 4500 l |
| DISPLACEMENT | 200 |

[see more information about M/Y Y at www.nauyachts.com](http://www.nauyachts.com)



EXTERIOR BENETTI OASIS 34M HULL #BO212
MY Y

M/Y Y



AFT AREA

M/Y Y



AFT MAIN DECK JACUZZI

M/Y Y



AFT MAIN DECK JACUZZI

M/Y Y



AFT MAIN DECK JACUZZI

M/Y Y



AFT MAIN DECK LOUNGE AREA

M/Y Y



AFT MAIN DECK LOUNGE AREA

M/Y Y



AFT MAIN DECK LOUNGE AREA

M/Y Y



AFT MAIN DECK LOUNGE AREA

M/Y Y



AFT MAIN DECK LOUNGE AREA

M/Y Y



AFT UPPER DECK DINING AREA

M/Y Y



AFT UPPER DECK DINING AREA

M/Y Y



AFT UPPER DECK DINING AREA

M/Y Y



BOW AREA

M/Y Y



BOW LOUNGE AREA

M/Y Y



BOW LOUNGE AREA

M/Y Y



BOW LOUNGE AREA

M/Y Y



SUNDECK DINING AREA

M/Y Y



SUNDECK DINING AREA

M/Y Y



SUNDECK LOUNGE AREA

M/Y Y



SUNDECK DINING AREA

M/Y Y



SUNDECK LOUNGE AREA

M/Y Y



SUNDECK LOUNGE AREA

M/Y Y



SUNDECK LOUNGE AREA

M/Y Y



SUNDECK LOUNGE AREA

M/Y Y



UPPER DECK SALOON

M/Y Y



UPPER DECK SALOON

M/Y Y



MAIN SALON LOUNGE AREA

M/Y Y



MAIN SALON DINING AREA

M/Y Y



MAIN HELM STATION

M/Y Y



MAIN HELM STATION

M/Y Y



MASTER CABIN

M/Y Y



MASTER CABIN

M/Y Y



MASTER CABIN

M/Y Y



MASTER BATHROOM

M/Y Y



MASTER BATHROOM

M/Y Y



STAIRS FROM MD TO LD



STAIRS FROM MD TO LD

M/Y Y



VIP CABIN

M/Y Y



VIP CABIN

M/Y Y



GUEST CABIN

M/Y Y



GUEST BATHROOM

M/Y Y

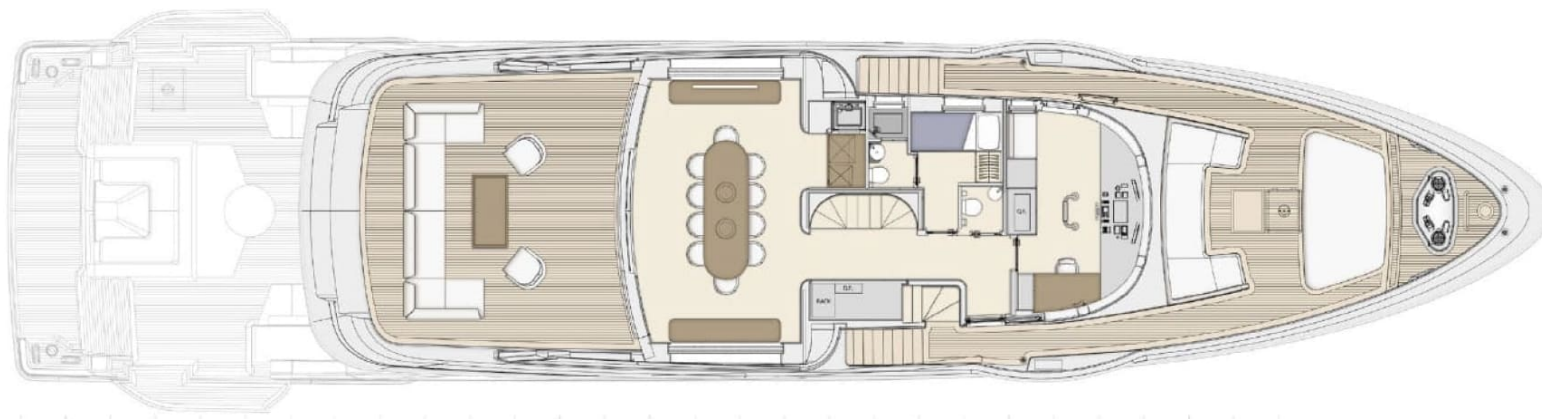
General Arrangement



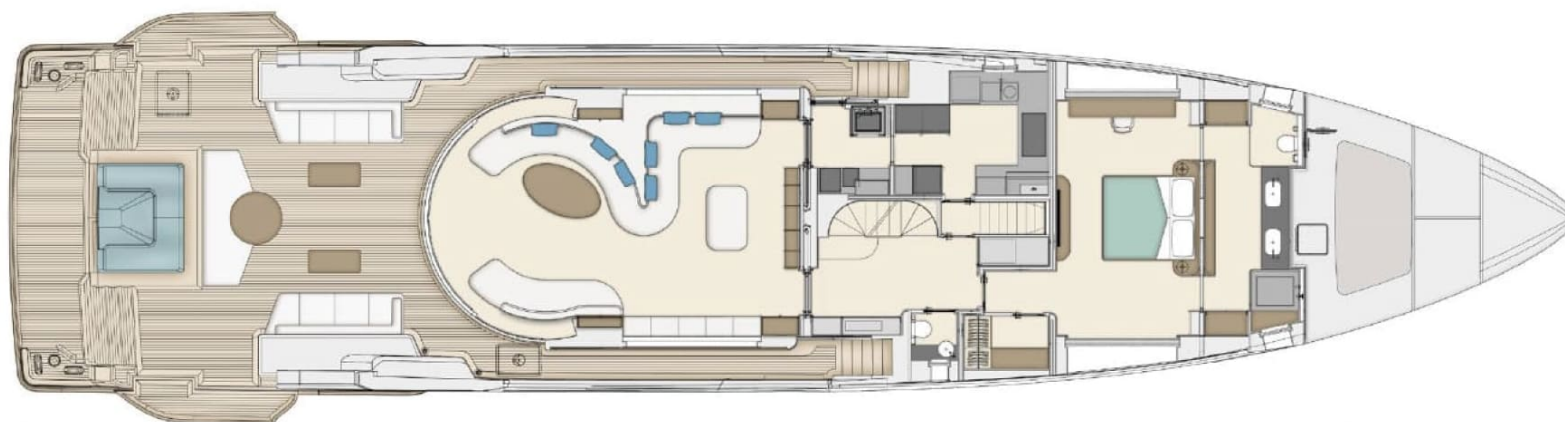
PROFILE



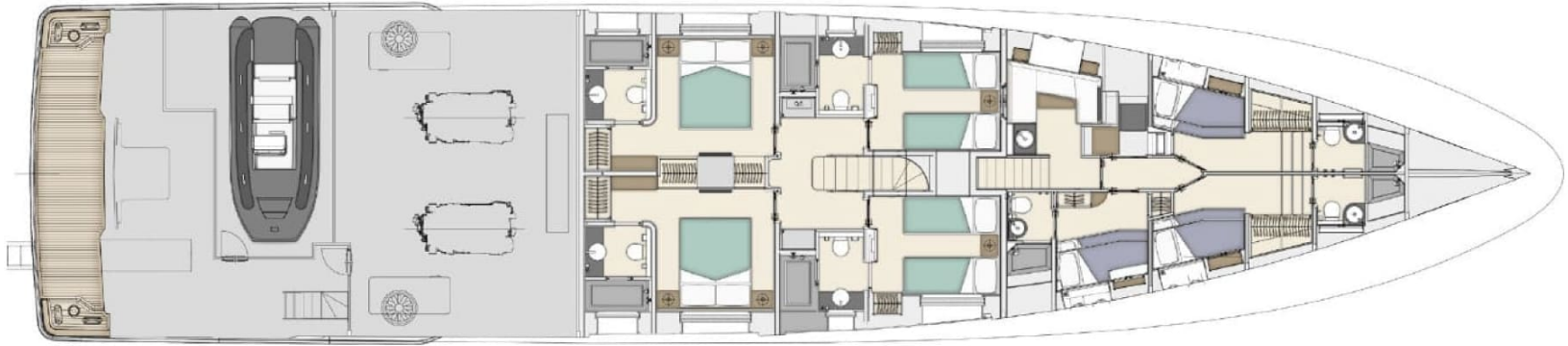
SUNDECK



UPPER DECK



MAIN DECK



LOWER DECK



KIRILL KUATOV

+377 607 93 15 20

+39 333 576 44 44

 [Send e-mail](#)

 WhatsApp

 Telegram