



Brokerage

NAU
YACHTS

DAISY D

MOTOR YACHT HEESSEN 49.8M 2018

€28,500,000 (VAT
paid)
FLAG - CAYMAN ISLANDS

MOTOR YACHT

DAISY D



DAISY D is a 49.8-metre semi-displacement motor yacht from the **Heesen 5000** series. Launched in 2018 and having completed her full five-year survey and refit in 2023, **DAISY D** is presented in immaculate condition and ready for immediate cruising. Her aluminium hull and superstructure were styled by Omega Architects, with interiors by Cristiano Gatto.

Powered by twin MTU 16V 4000 M73L engines delivering a total of 7,724 hp, she reaches a top speed of 23 knots, cruises comfortably at 12 knots and has a range of up to 3,200 nautical miles. A hard-chined hull and Naiad zero-speed stabilisers ensure comfort underway and at anchor. With a gross tonnage of 499 GT, she offers one of the largest interior volumes in her class.

Accommodation is for up to 12 guests in six cabins. The main deck features a full-beam 47-square-metre owner's suite with a private lounge, office and his-and-hers bathrooms. On the lower deck there is a full-beam VIP cabin, two doubles and two convertible cabins. Separate crew quarters for nine are arranged in five cabins. The sundeck hosts a jacuzzi, sun loungers, shaded dining and a bar, while a large beach club at the stern provides easy access to the water. Her extensive toy inventory includes a 7-metre Driel tender for 13 guests, a Williams SportJet 395, jet skis, SeaBobs, Jetsurf, surfboards, water skis, wakeboard, kayak, snorkelling gear and an inflatable slide.

With VAT paid, commercial compliance, a proven charter record and high performance, **DAISY D** stands out as one of the most attractive offerings on today's 50-metre yacht market.

[see more information about M/Y DAISY D at www.nauyachts.com](http://www.nauyachts.com)

SPECIFICATION

SHIPYARD, MODEL	Heesen 5000
BUILT	2018
LENGTH	49.8 m
WATERLINE LENGTH	45.78 m
HULL CONFIGURATION	SEMI-DISPLACEMENT
BEAM	9 m
RANGE	3100
DRAFT	2.51 m
GROSS TONNAGE	499 GT
YACHT CLASS	A1 YACHTING SERVICE AMS
CABINS	6+5
MASTER CABIN	MAIN DECK
GUESTS	12
BERTHS	12+9
CREW	9
HEADS	7+5

EXTERIOR DESIGN	OMEGA ARCHITECTS
INTERIOR DESIGN	CRISTIANO GATTO DESIGN
HULL	ALUMINUM
SUPERSTRUCTURE	ALUMINIUM
ENGINES	2 x MTU 16V 4000 M73L 3862 h.p.
TYPE OF DRIVE	SHAFT LINE
ENGINE HOURS	5140 h
MAXIMUM SPEED	23 kn
CRUISING SPEED	12 kn
FUEL CONSUMPTION AT ECONOMICAL SPEED	~ 300 l/h
FUEL	68800 l
GREY WATER	N/A
BLACK WATER	N/A
FRESH WATER	16200 l
DISPLACEMENT	N/A

[see more information about M/Y DAISY D at www.nauyachts.com](http://www.nauyachts.com)



EXTERIOR HEESEN 5000 2018 MY DAISY D

M/Y DAISY D



EXTERIOR HEESEN 5000 2018 MY DAISY D

M/Y DAISY D



EXTERIOR HEESEN 5000 2018 MY DAISY D

M/Y DAISY D



SUNDECK

M/Y DAISY D



SUNDECK

M/Y DAISY D



SUNDECK LOUNGE AREA

M/Y DAISY D



SUNDECK AFT SUNBATHING AREA

M/Y DAISY D



SUNDECK JACUZZI

M/Y DAISY D



BOW LOUNGE AREA

M/Y DAISY D



BOW LOUNGE AREA

M/Y DAISY D



AFT UPPER DECK DINING AREA

M/Y DAISY D



AFT UPPER DECK DINING AREA

M/Y DAISY D



AFT MAIN DECK LOUNGE AREA

M/Y DAISY D



UPPER DECK SALOON

M/Y DAISY D



MAIN HELM STATION

M/Y DAISY D



MAIN SALON LOUNGE AREA

M/Y DAISY D



MAIN SALON LOUNGE AREA

M/Y DAISY D



MAIN SALON LOUNGE AREA

M/Y DAISY D



MAIN SALON DINING AREA

M/Y DAISY D



MAIN SALON DINING AREA

M/Y DAISY D



MAIN SALON LOBBY

M/Y DAISY D



MASTER CABIN

M/Y DAISY D



MASTER BATHROOM

M/Y DAISY D



MASTER BATHROOM

M/Y DAISY D



MASTER BATHROOM

M/Y DAISY D



VIP CABIN

M/Y DAISY D



VIP CABIN

M/Y DAISY D



VIP BATHROOM

M/Y DAISY D



GUEST CABIN

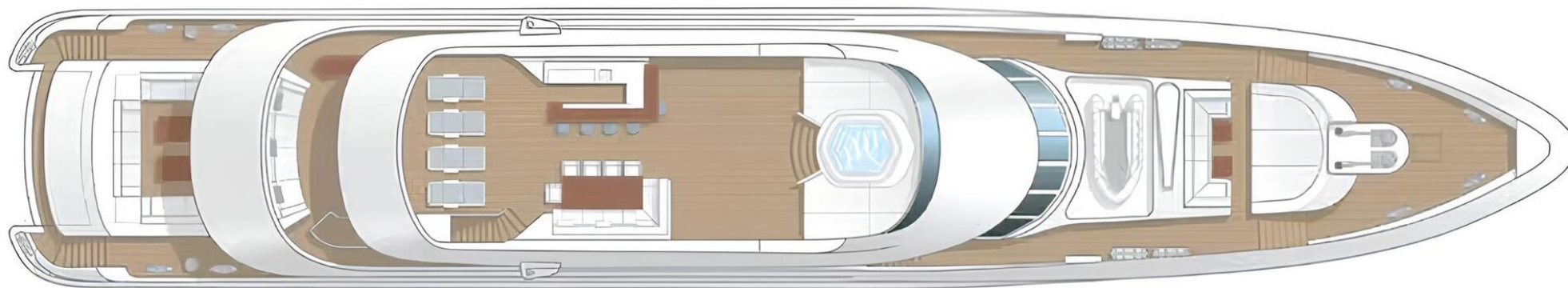
M/Y DAISY D



GALLEY

M/Y DAISY D

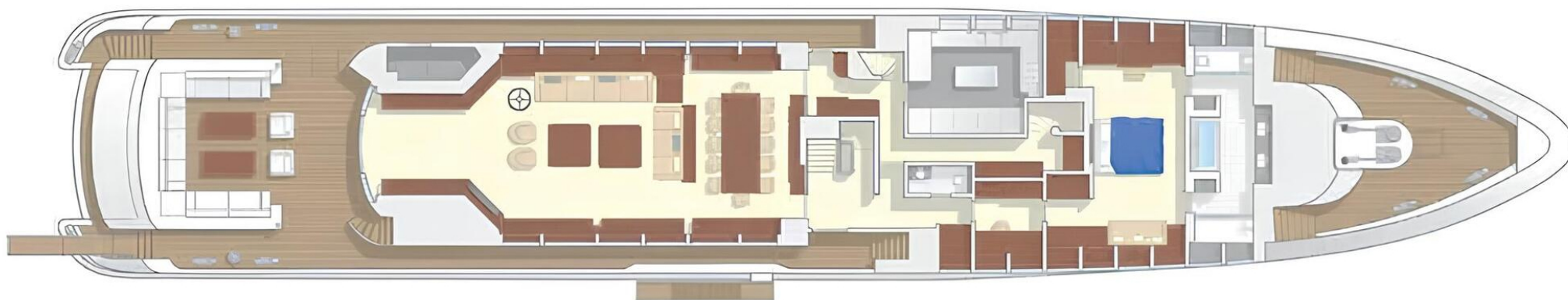
General Arrangement



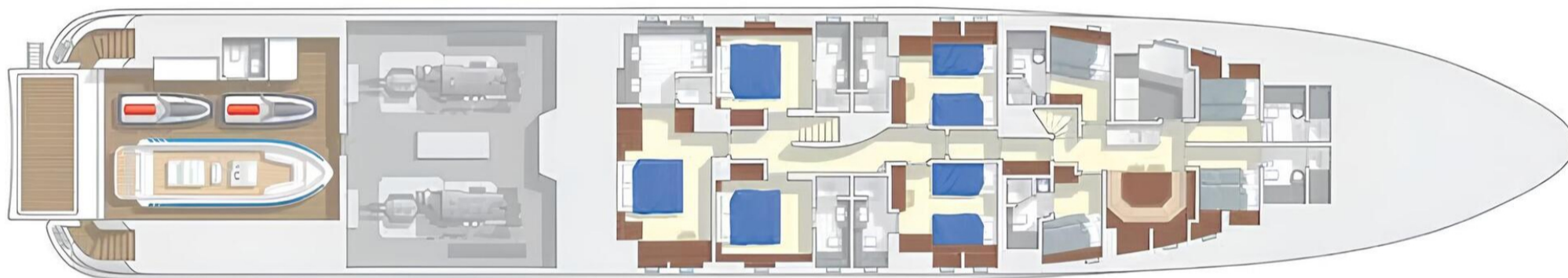
SUNDECK



UPPER DECK



MAIN DECK



LOWER DECK



KIRILL KUATOV

+377 607 93 15 20

+39 333 576 44 44

 [Send e-mail](#)

 WhatsApp

 Telegram