



Brokerage

NAU
YACHTS

DREAM

MOTOR YACHT ABEKING & RASMUSSEN 60M 2001

€39,500,000

FLAG - MARSHALL ISLANDS

MOTOR YACHT

DREAM



DREAM is a 60-metre full-displacement motor yacht built by **Abeking & Rasmussen** in 2001 and comprehensively refitted in 2023. Classed to Lloyd's Register and commercially registered, she combines proven transoceanic capability with timeless exterior design by Donald Starkey and a luxurious interior by Bannenberg & Rowell. Her steel hull, aluminium superstructure and teak decks ensure strength, seaworthiness and reliability on extended passages.

Offering a volume rarely seen in her class, **DREAM** features a 110-square-metre owner's apartment on the main deck with a full-beam bedroom, three bathrooms – including a master bathroom with Jacuzzi and steam shower – walk-in wardrobes and two adjoining rooms currently used as an office and a yoga/massage space. These areas can be converted into additional cabins, increasing guest capacity to seven–nine staterooms and up to 16 guests. A VIP cabin is located on the upper deck, while four lower-deck guest cabins can be combined into two VIP suites.

Accommodation for 16 crew is provided in well-appointed quarters.

Her interiors blend fine woods, onyx and marble with custom furniture and curated artworks. The sky lounge boasts a 102-inch screen with an AMX/Crestron entertainment system, while a fully equipped Technogym and Tuff Stuff fitness centre enhances the onboard lifestyle. The sun deck offers a Jacuzzi, bar, shower, and multiple lounging and dining areas.

Twin Caterpillar 3516B engines deliver a maximum speed of 16 knots, a cruising speed of 14 knots and a transoceanic range of 5,000 nautical miles at 12 knots.

Quantum zero-speed stabilisers with XT retractable fins ensure exceptional comfort both underway and at anchor.

Her extensive toy and tender inventory includes a 10-metre Intrepid 327, a 7.3-metre Novurania Beachlander, a 4.5-metre Zodiac, Yamaha WaveRunners, SeaBobs, diving gear, kayaks, boards, water skis, wakeboards and an inflatable slide. The Intrepid tender can be stowed on the sun deck during passages.

With only two owners since launch, continuous upgrades, a special survey completed in June 2025 and a proven charter history, **DREAM** represents a rare opportunity to acquire a large-volume, world-cruising superyacht from one of Northern Europe's most respected shipyards.

[see more information about M/Y DREAM at www.nauyachts.com](http://www.nauyachts.com)

SPECIFICATION

SHIPYARD, MODEL	Abeking & Rasmussen 60M
BUILT	2001
LENGTH	60 m
WATERLINE LENGTH	51.43 m
HULL CONFIGURATION	DISPLACEMENT
BEAM	10.7 m
RANGE	5000
DRAFT	3.5 m
GROSS TONNAGE	1092 GT
YACHT CLASS	LLOYD'S
CABINS	7+7
MASTER CABIN	MAIN DECK
GUESTS	16
BERTHS	16+16
CREW	16
HEADS	8+7

EXTERIOR DESIGN	DONALD STARKEY DESIGNS
INTERIOR DESIGN	BANNENBERG & ROWELL
HULL	STEEL
SUPERSTRUCTURE	ALUMINIUM
ENGINES	2 x Caterpillar 3516B 1877 h.p.
TYPE OF DRIVE	SHAFT LINE
ENGINE HOURS	33891 h
MAXIMUM SPEED	16 kn
CRUSING SPEED	14 kn
FUEL CONSUMPTION AT ECONOMICAL SPEED	~ 378 l/h
FUEL	168000 l
GREY WATER	15840 l
BLACK WATER	3570 l
FRESH WATER	28000 l
DISPLACEMENT	919

[see more information about M/Y DREAM at www.nauyachts.com](http://www.nauyachts.com)



EXTERIOR ABEKING & RASMUSSEN 60M 2001
MY DREAM

M/Y DREAM



EXTERIOR ABEKING & RASMUSSEN 60M 2001
MY DREAM

M/Y DREAM



EXTERIOR ABEKING & RASMUSSEN 60M 2001
MY DREAM

M/Y DREAM



EXTERIOR ABEKING & RASMUSSEN 60M 2001
MY DREAM

M/Y DREAM



SUNDECK AFT SUNBATHING AREA

M/Y DREAM



SUNDECK JACUZZI

M/Y DREAM



AFT UPPER DECK DINING AREA

M/Y DREAM



AFT UPPER DECK DINING AREA

M/Y DREAM



AFT UPPER DECK LOUNGE AREA

M/Y DREAM



AFT MAIN DECK BAR

M/Y DREAM



UPPER DECK SALOON

M/Y DREAM



UPPER DECK SALOON

M/Y DREAM



MAIN HELM STATION

M/Y DREAM



MAIN SALON LOUNGE AREA

M/Y DREAM



MAIN SALON LOUNGE AREA

M/Y DREAM



MAIN SALON LOUNGE AREA

M/Y DREAM



MAIN SALON DINING AREA

M/Y DREAM



MAIN SALON DINING AREA

M/Y DREAM



MAIN SALON LOBBY

M/Y DREAM



MASTER CABIN

M/Y DREAM



MASTER CABIN

M/Y DREAM



MASTER CABIN

M/Y DREAM



MASTER CABIN LOUNGE AREA

M/Y DREAM



OFFICE IN THE MASTER CABIN

M/Y DREAM



MASSAGE ROOM

M/Y DREAM



MASTER BATHROOM

M/Y DREAM



VIP CABIN

M/Y DREAM



VIP CABIN

M/Y DREAM



VIP BATHROOM

M/Y DREAM



VIP BATHROOM

M/Y DREAM



VIP BATHROOM

M/Y DREAM



GUEST CABIN

M/Y DREAM



GUEST CABIN

M/Y DREAM



GUEST CABIN

M/Y DREAM



GUEST BATHROOM

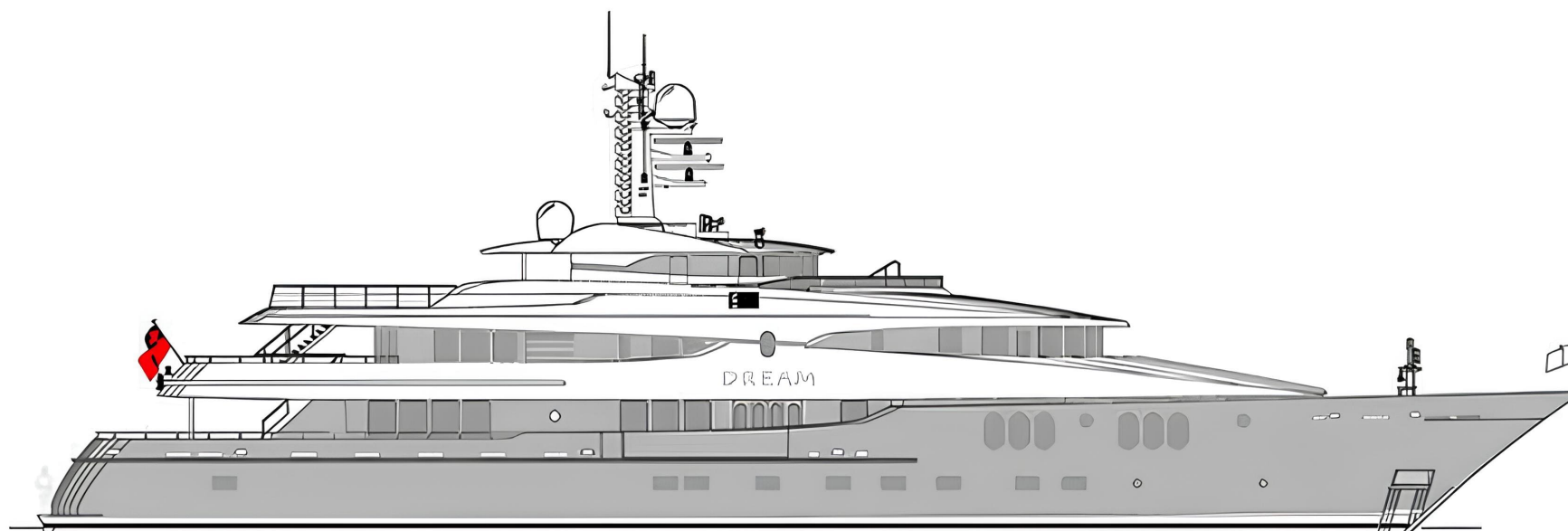
M/Y DREAM



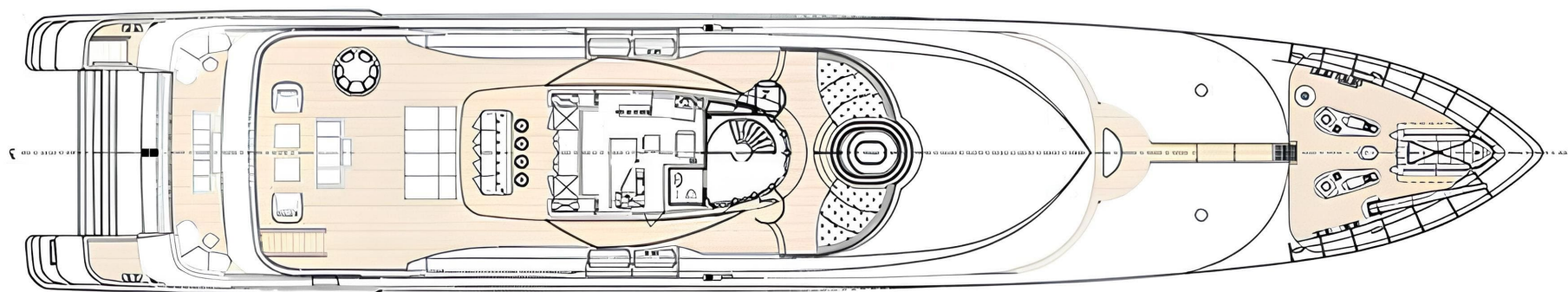
GYM

M/Y DREAM

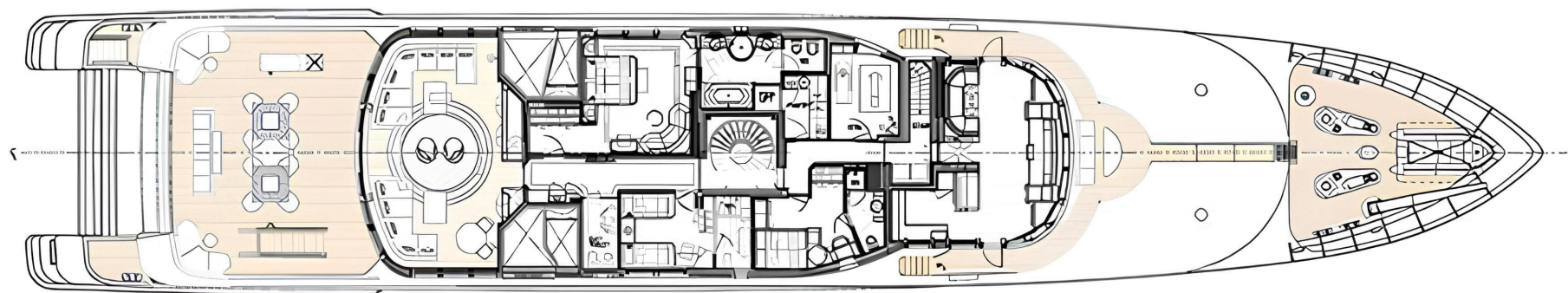
General Arrangement



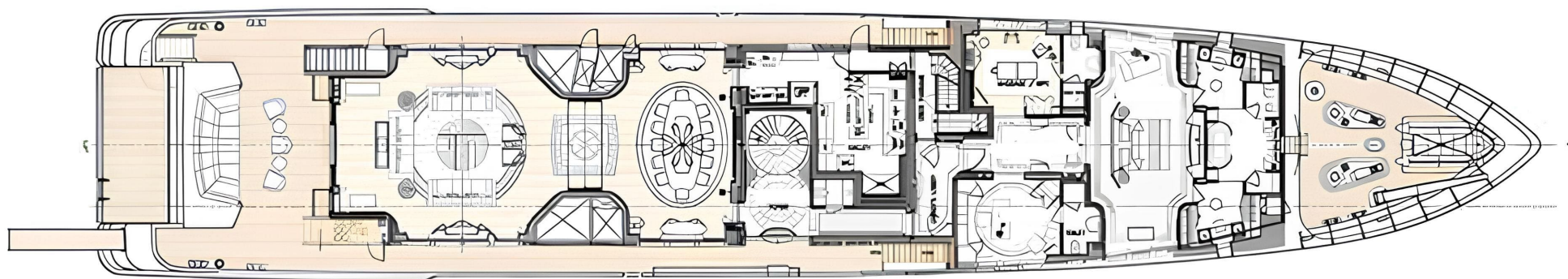
PROFILE



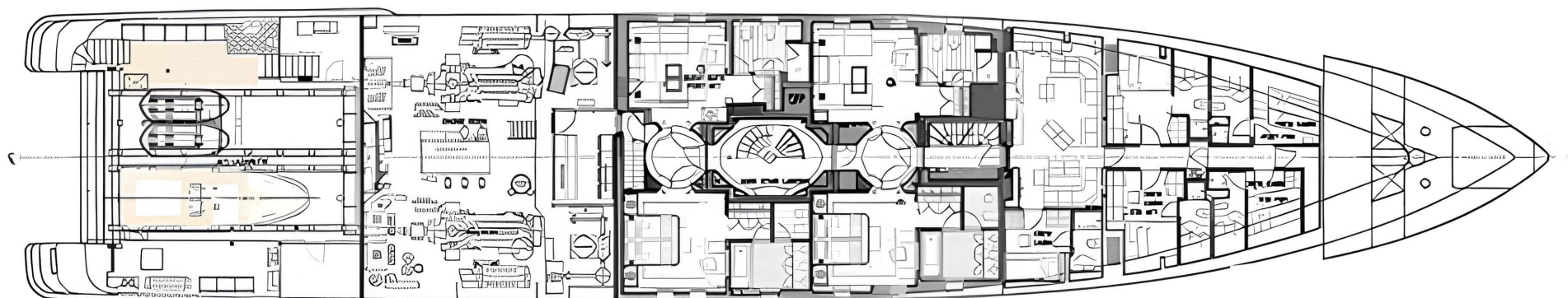
SUNDECK



UPPER DECK



MAIN DECK



LOWER DECK



KIRILL KUATOV

+377 607 93 15 20

+39 333 576 44 44

 [Send e-mail](#)

 WhatsApp

 Telegram

[More information about M/Y DREAM at www.nauyachts.com](#)

[Watch video](#)