



Brokerage

NAU
YACHTS

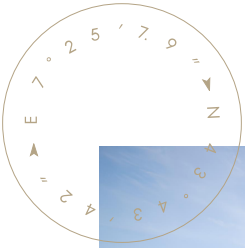
PENTA

MOTOR YACHT SANLORENZO 35.75M 2021

€13,800,000 (VAT
paid)
FLAG -

MOTOR YACHT

PENTA



PENTA is a 35.75-metre motor yacht built by **Sanlorenzo** in 2021, combining Italian craftsmanship, contemporary style and advanced technology. Her exterior by Zuccon International Project gives her a sporty yet refined profile.

The interior by Christian Liaigre is serene and light, featuring natural materials throughout. A spacious main salon with dining area and a cosy sky lounge provide welcoming spaces for relaxation and socialising.

PENTA accommodates up to 10 guests in five cabins. The full-beam owner's suite includes a private study area and direct access to the foredeck, while the remaining guest cabins are on the lower deck, each with its own bathroom.

Outdoor living areas include a sundeck with bar and sunpads, lounge areas forward and aft on the main deck, and a large al fresco dining area on the upper deck aft. Fold-down terraces in the beach club create direct contact with the sea and easy access to water toys.

Twin Caterpillar 3512C engines of 1,500 hp each deliver an economical cruising speed of 11 knots, a top speed of 19 knots and a range of up to 3,000 nautical miles.

With VAT paid, **PENTA** represents a rare opportunity to acquire a virtually new **Sanlorenzo** yacht in immaculate condition, ready for her next adventures.

[see more information about M/Y PENTA at www.nauyachts.com](http://www.nauyachts.com)

SPECIFICATION

SHIPYARD, MODEL	Sanlorenzo SD118
BUILT	2021
LENGTH	35.75 m
WATERLINE LENGTH	33.62 m
HULL CONFIGURATION	SEMI-DISPLACEMENT
BEAM	6.85 m
RANGE	3000
DRAFT	1.96 m
GROSS TONNAGE	290 GT
YACHT CLASS	RINA
CABINS	5+3
MASTER CABIN	MAIN DECK
GUESTS	10
BERTHS	10+6
CREW	6
HEADS	6+3

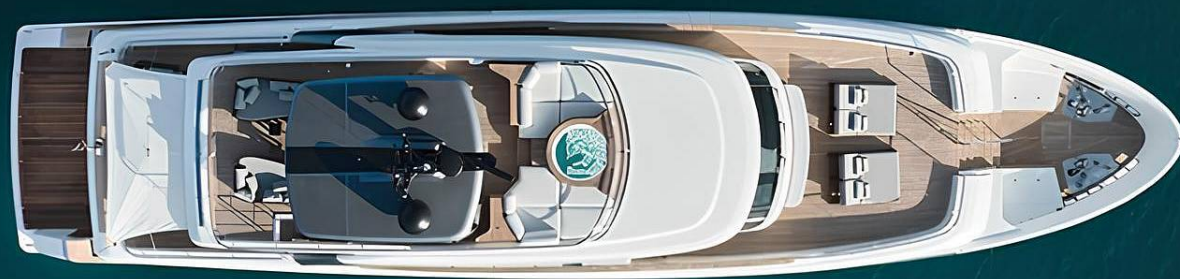
EXTERIOR DESIGN	ZUCCON INTERNATIONAL PROJECT
INTERIOR DESIGN	PATRICIA URQUIOLA
HULL	GRP
SUPERSTRUCTURE	GRP
ENGINES	2 x Caterpillar 3512C 1500 h.p.
TYPE OF DRIVE	SHAFT LINE
ENGINE HOURS	N/A
MAXIMUM SPEED	19 kn
CRUISING SPEED	11 kn
FUEL CONSUMPTION AT ECONOMICAL SPEED	~ 400 l/h
FUEL	32000 l
GREY WATER	1500 l
BLACK WATER	1500 l
FRESH WATER	4000 l
DISPLACEMENT	215

[see more information about M/Y PENTA at www.nauyachts.com](http://www.nauyachts.com)



EXTERIOR SANLORENZO SD118 2021 MY
PENTA

M/Y PENTA



EXTERIOR SANLORENZO SD118 2021 MY
PENTA

M/Y PENTA



EXTERIOR SANLORENZO SD118 2021 MY
PENTA

M/Y PENTA



EXTERIOR SANLORENZO SD118 2021 MY
PENTA

M/Y PENTA



SUNDECK

M/Y PENTA



SUNDECK

M/Y PENTA



SUNDECK LOUNGE AREA

M/Y PENTA



SUNDECK LOUNGE AREA

M/Y PENTA



SUNDECK JACUZZI

M/Y PENTA



SUNDECK DINING AREA

M/Y PENTA



BOW SUNBATHING AREA

M/Y PENTA



AFT UPPER DECK LOUNGE AREA

M/Y PENTA



PORT SIDE

M/Y PENTA



AFT MAIN DECK LOUNGE AREA

M/Y PENTA



UPPER DECK SALOON

M/Y PENTA



MAIN SALON LOUNGE AREA

M/Y PENTA



MAIN SALON DINING AREA

M/Y PENTA



MASTER CABIN DRESSING ROOM

M/Y PENTA



OFFICE IN THE MASTER CABIN

M/Y PENTA



VIP CABIN

M/Y PENTA



VIP CABIN

M/Y PENTA



VIP CABIN

M/Y PENTA



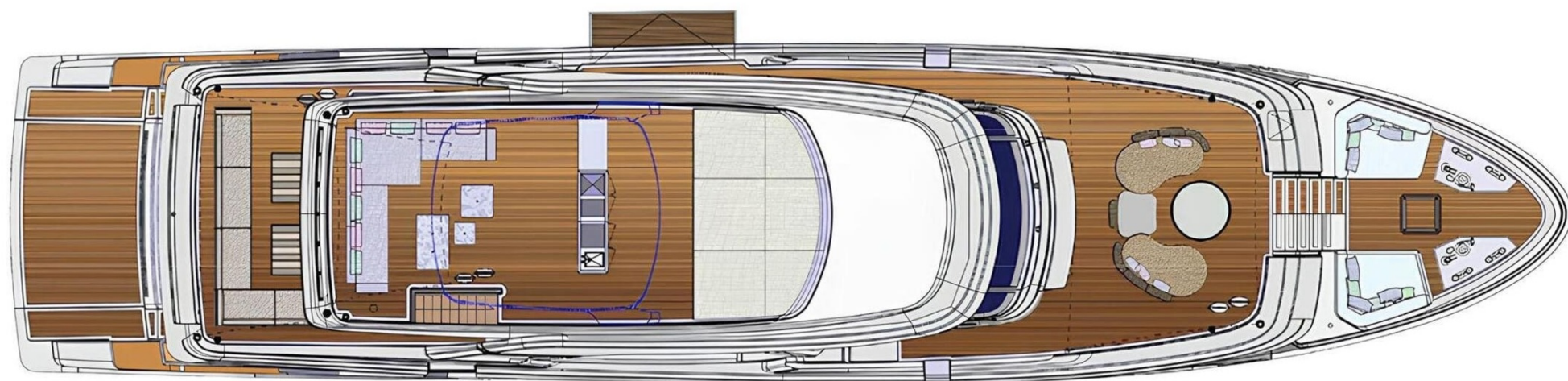
GUEST CABIN

M/Y PENTA

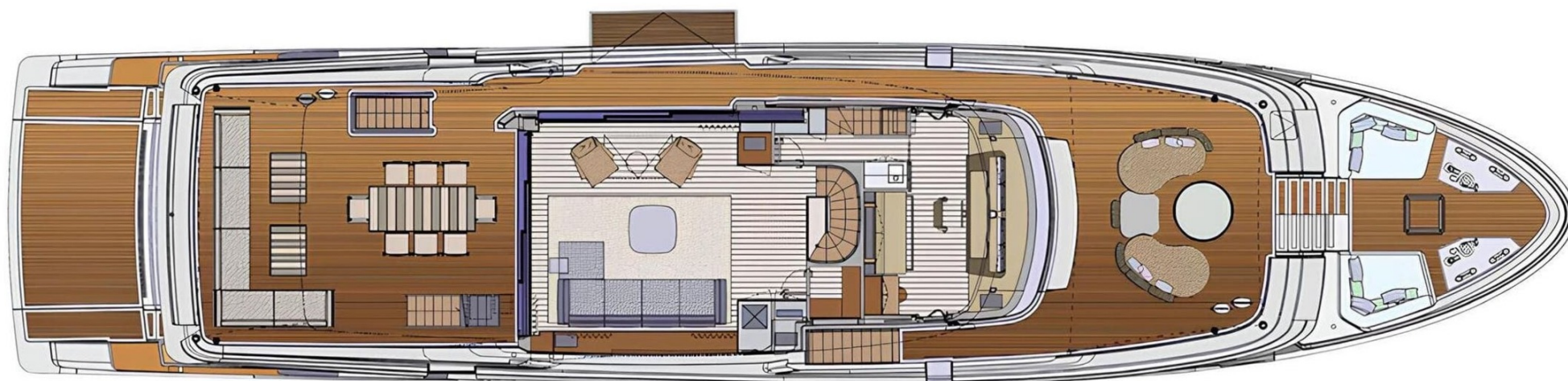
General Arrangement



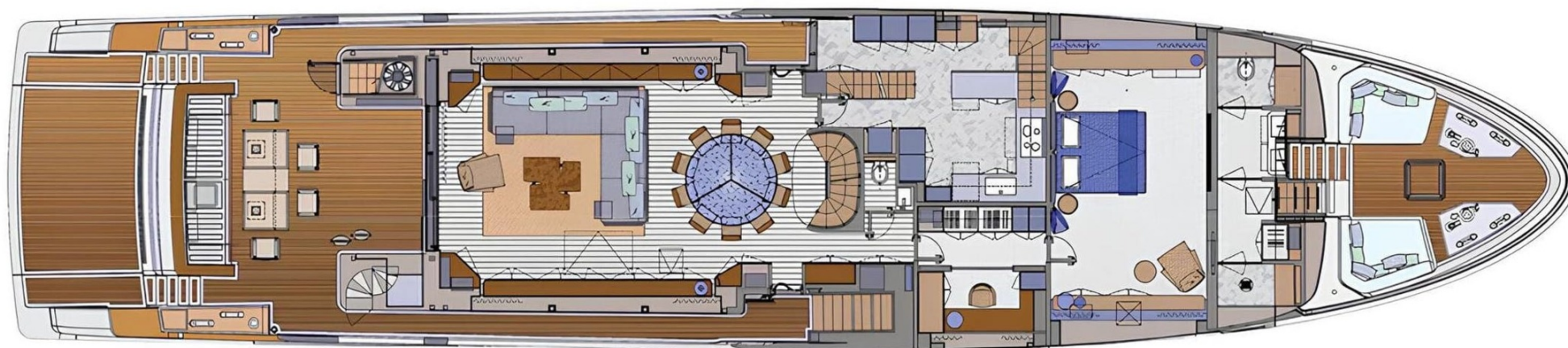
PROFILE



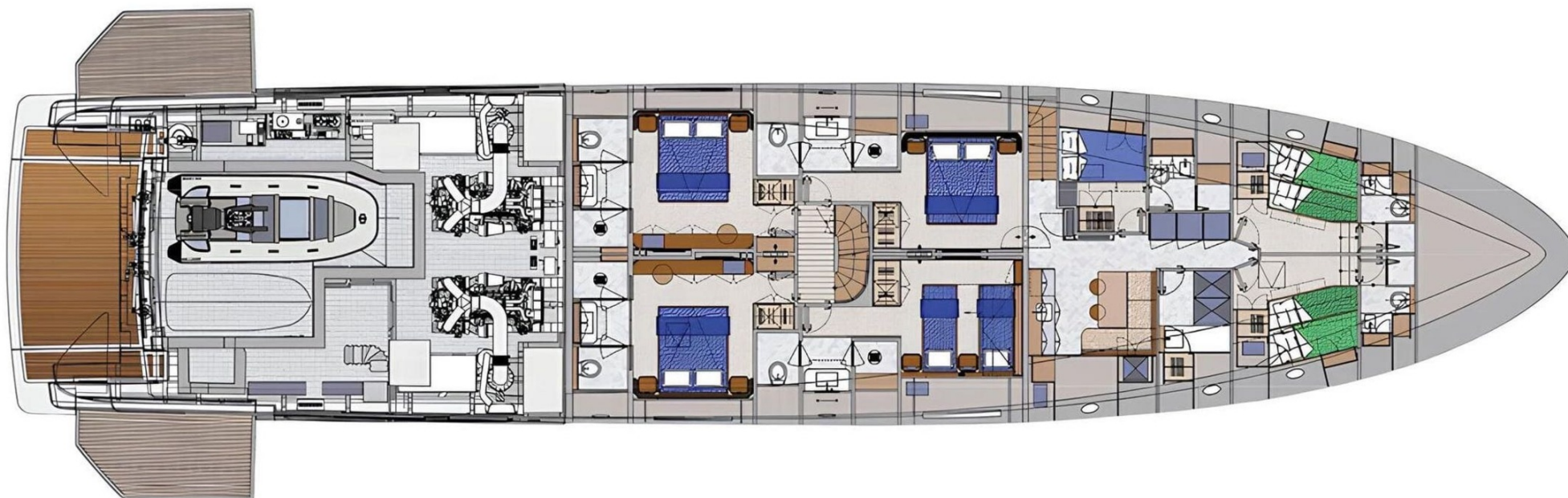
SUNDECK



UPPER DECK



MAIN DECK



LOWER DECK



KIRILL KUATOV

+377 607 93 15 20

+39 333 576 44 44

 [Send e-mail](#)

 WhatsApp

 Telegram