



Brokerage

NAU  
YACHTS

# SUNSEEKER 116

MOTOR YACHT    SUNSEEKER 35.2M    2016

€9,900,000 (VAT paid)  
FLAG - MALTA



MOTOR YACHT

## SUNSEEKER 116



**SUNSEEKER 116** is a 2016 built to RINA and MCA LY3 standards and widely regarded as one of the finest examples of the series. Meticulously maintained with low engine hours and numerous custom upgrades, she presents in outstanding condition. Accommodation is for up to 10 guests in five staterooms, including a full-beam master suite on the main deck, two VIP staterooms and two guest cabins on the lower deck. Her interior combines clean-lined furniture, well-planned seating areas and a soothing colour palette to create a contemporary, inviting ambience. Her exterior decks are designed for maximum comfort. The expansive flybridge offers a Jacuzzi, sunloungers, bar and dining area, while a large garage houses a full complement of water toys—from jet skis to SUP boards—for active days on the water.

Powered by twin MTU 16V 2000 M96L engines, **SUNSEEKER 116** cruises at 17 knots and reaches a top speed of 25 knots. Notable upgrades include a new hydraulic passerelle, upgraded anchor chain, Alfa Laval fuel polishing system, Tijssen security and CCTV, Bang & Olufsen audio, a commercial galley with Miele appliances, underwater lighting and a retractable hardtop.

From 2021 to 2025 she benefited from an extensive technical refit including overhauls of engines and generators, propeller balancing, stabiliser servicing, updated furnishings, new air-conditioning pumps and navigation electronics. Her RINA class has been maintained and all key systems are on schedule with planned maintenance.

[see more information about M/Y SUNSEEKER 116 at www.nauyachts.com](http://www.nauyachts.com)

# SPECIFICATION

SHIPYARD, MODEL	Sunseeker 116 Yacht
BUILT	2016
LENGTH	35.2 m
WATERLINE LENGTH	27.47 m
HULL CONFIGURATION	SEMI-DISPLACEMENT
BEAM	7.33 m
RANGE	1250
DRAFT	2.39 m
GROSS TONNAGE	236 GT
YACHT CLASS	RINA
CABINS	5+3
MASTER CABIN	MAIN DECK
GUESTS	12
BERTHS	12+5
CREW	5
HEADS	6+2

EXTERIOR DESIGN	SUNSEEKER
INTERIOR DESIGN	SUNSEEKER
HULL	GRP
SUPERSTRUCTURE	GRP
ENGINES	2 x 16V 2000 M96L 2640 h.p.
TYPE OF DRIVE	SHAFT LINE
ENGINE HOURS	2037 h
MAXIMUM SPEED	25 kn
CRUISING SPEED	17 kn
FUEL CONSUMPTION AT ECONOMICAL SPEED	~ 120 l/h
FUEL	20000 l
GREY WATER	1340 l
BLACK WATER	1250 l
FRESH WATER	4000 l
DISPLACEMENT	130

[see more information about M/Y SUNSEEKER 116 at www.nauyachts.com](http://www.nauyachts.com)





EXTERIOR SUNSEEKER 116 YACHT 2016 MY  
SURVIVOR 2

M/Y SUNSEEKER 116





EXTERIOR SUNSEEKER 116 YACHT 2016 MY  
SURVIVOR 2

M/Y SUNSEEKER 116





EXTERIOR SUNSEEKER 116 YACHT 2016 MY  
SURVIVOR 2

M/Y SUNSEEKER 116





EXTERIOR SUNSEEKER 116 YACHT 2016 MY  
SURVIVOR 2

M/Y SUNSEEKER 116





EXTERIOR SUNSEEKER 116 YACHT 2016 MY  
SURVIVOR 2

M/Y SUNSEEKER 116





EXTERIOR SUNSEEKER 116 YACHT 2016 MY  
SURVIVOR 2

M/Y SUNSEEKER 116





FLYBRIDGE LOUNGE AREA

M/Y SUNSEEKER 116





FLYBRIDGE LOUNGE AREA

M/Y SUNSEEKER 116





FLYBRIDGE LOUNGE AREA

M/Y SUNSEEKER 116





FLYBRIDGE LOUNGE AREA

M/Y SUNSEEKER 116





JACUZZI ON THE BOW

M/Y SUNSEEKER 116





AFT AREA

M/Y SUNSEEKER 116





MAIN SALON LOUNGE AREA

M/Y SUNSEEKER 116





MAIN SALON LOUNGE AREA

M/Y SUNSEEKER 116





MAIN SALON DINING AREA

M/Y SUNSEEKER 116





MAIN SALON DINING AREA

M/Y SUNSEEKER 116





MASTER CABIN

M/Y SUNSEEKER 116





MASTER CABIN

M/Y SUNSEEKER 116





MASTER BATHROOM

M/Y SUNSEEKER 116





STAIRS FROM MD TO LD

M/Y SUNSEEKER 116





VIP CABIN

M/Y SUNSEEKER 116





VIP CABIN

M/Y SUNSEEKER 116





VIP BATHROOM

M/Y SUNSEEKER 116





GUEST CABIN

M/Y SUNSEEKER 116





GARAGE

M/Y SUNSEEKER 116





TENDER

M/Y SUNSEEKER 116



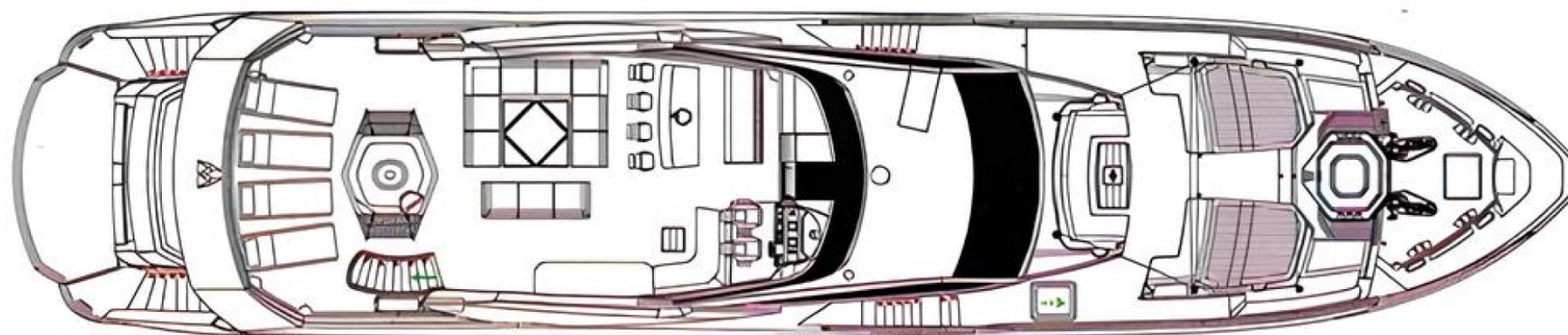
# General Arrangement





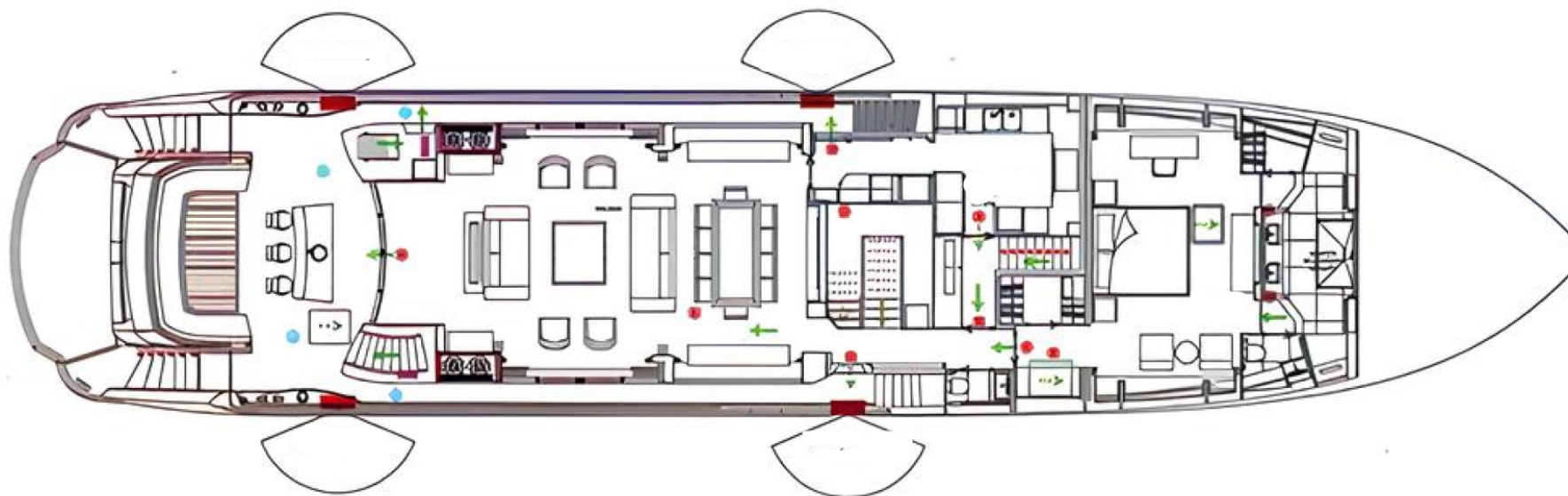
PROFILE





FLYBRIDGE





MAIN DECK





LOWER DECK





## KIRILL KUATOV

+377 607 93 15 20

+39 333 576 44 44

 [Send e-mail](#)

 WhatsApp

 Telegram

[More information about M/Y SUNSEEKER 116 at www.nauyachts.com](#)

[Watch video](#)