



Brokerage

NAU  
YACHTS

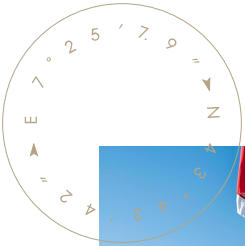
# LADY VOLANTIS

MOTOR YACHT    SUNSEEKER 35.05M    2014

€6,595,000  
FLAG -

MOTOR YACHT

# LADY VOLANTIS



Built in 2014 and extensively refitted in 2020, **LADY VOLANTIS** is a striking **Sunseeker 115 Sport Yacht** that combines performance, spacious living areas, and elegant styling. With a 10-year inspection completed in 2024 and VAT paid, this yacht represents a rare opportunity on the 35-meter market.

Her dynamic profile and panoramic windows emphasize modern design, while expansive exterior decks are crafted for outdoor living. Forward sunpads offer a private lounging area, the aft deck features a shaded dining area with a fully equipped bar, and the flybridge combines a relaxation zone, sunbathing spaces, and a retractable sunshade — ideal for entertaining or enjoying the sun.

The interior is finished in polished American walnut and soft leather. The main salon, with floor-to-ceiling windows, flows seamlessly into the dining area. Accommodation is provided for up to 10 guests in five cabins: a full-beam master suite on the main deck with a king-size bed, seating area, and en-suite bathroom with double sinks and shower; two double cabins and two convertible cabins on the lower deck, each with en-suite facilities. Six crew members are accommodated in separate cabins to ensure seamless service.

Powered by twin MTU 16V 2000 M94 engines producing 2,640 hp each, **LADY VOLANTIS** reaches a top speed of 26 knots and cruises comfortably at 18 knots. Zero-speed stabilizers ensure smooth sailing underway and at anchor.

[see more information about M/Y LADY VOLANTIS at www.nauyachts.com](http://www.nauyachts.com)

# SPECIFICATION

SHIPYARD, MODEL	Sunseeker 115 Sport Yacht
BUILT	2014
LENGTH	35.05 m
WATERLINE LENGTH	31.55 m
HULL CONFIGURATION	SEMI-DISPLACEMENT
BEAM	7.6 m
RANGE	1250
DRAFT	2.01 m
GROSS TONNAGE	236 GT
YACHT CLASS	RINA CHARTER MCA LY3
CABINS	5+3
MASTER CABIN	MAIN DECK
GUESTS	10
BERTHS	10+6
CREW	6
HEADS	6+3

EXTERIOR DESIGN	SUNSEEKER YACHTS
INTERIOR DESIGN	SUNSEEKER YACHTS
HULL	GRP
SUPERSTRUCTURE	GRP
ENGINES	2 x MTU 16V 2000 M94 2640 h.p.
TYPE OF DRIVE	SHAFT LINE
ENGINE HOURS	N/A
MAXIMUM SPEED	26 kn
CRUISING SPEED	18 kn
FUEL CONSUMPTION AT ECONOMICAL SPEED	~ 180 l/h
FUEL	14100 l
GREY WATER	1255 l
BLACK WATER	1255 l
FRESH WATER	4000 l
DISPLACEMENT	135

[see more information about M/Y LADY VOLANTIS at www.nauyachts.com](http://www.nauyachts.com)





EXTERIOR SUNSEEKER 115 SPORT YACHT 2014  
MY LADY VOLANTIS

M/Y LADY VOLANTIS





EXTERIOR SUNSEEKER 115 SPORT YACHT 2014  
MY LADY VOLANTIS

M/Y LADY VOLANTIS





EXTERIOR SUNSEEKER 115 SPORT YACHT 2014  
MY LADY VOLANTIS

M/Y LADY VOLANTIS





COCKPIT DINING AREA

M/Y LADY VOLANTIS





COCKPIT DINING AREA

M/Y LADY VOLANTIS





COCKPIT BAR

M/Y LADY VOLANTIS





FOLDING STARBOARD BALCONY

M/Y LADY VOLANTIS





BOW LOUNGE AREA

M/Y LADY VOLANTIS





BOW LOUNGE AREA

M/Y LADY VOLANTIS





BOW LOUNGE AREA

M/Y LADY VOLANTIS





FLYBRIDGE AFT SUNBATHING AREA

M/Y LADY VOLANTIS





FLYBRIDGE LOUNGE AREA

M/Y LADY VOLANTIS





SECOND HELM STATION

M/Y LADY VOLANTIS





SWIMMING PLATFORM AND WATER TOYS

M/Y LADY VOLANTIS





MAIN SALON LOUNGE AREA

M/Y LADY VOLANTIS





MAIN SALON DINING AREA

M/Y LADY VOLANTIS





MASTER CABIN

M/Y LADY VOLANTIS





MASTER CABIN

M/Y LADY VOLANTIS





MASTER CABIN LOUNGE AREA

M/Y LADY VOLANTIS





MASTER BATHROOM

M/Y LADY VOLANTIS





MASTER BATHROOM

M/Y LADY VOLANTIS





VIP CABIN

M/Y LADY VOLANTIS





VIP CABIN

M/Y LADY VOLANTIS





GUEST CABIN

M/Y LADY VOLANTIS





GUEST CABIN

M/Y LADY VOLANTIS





GUEST CABIN

M/Y LADY VOLANTIS





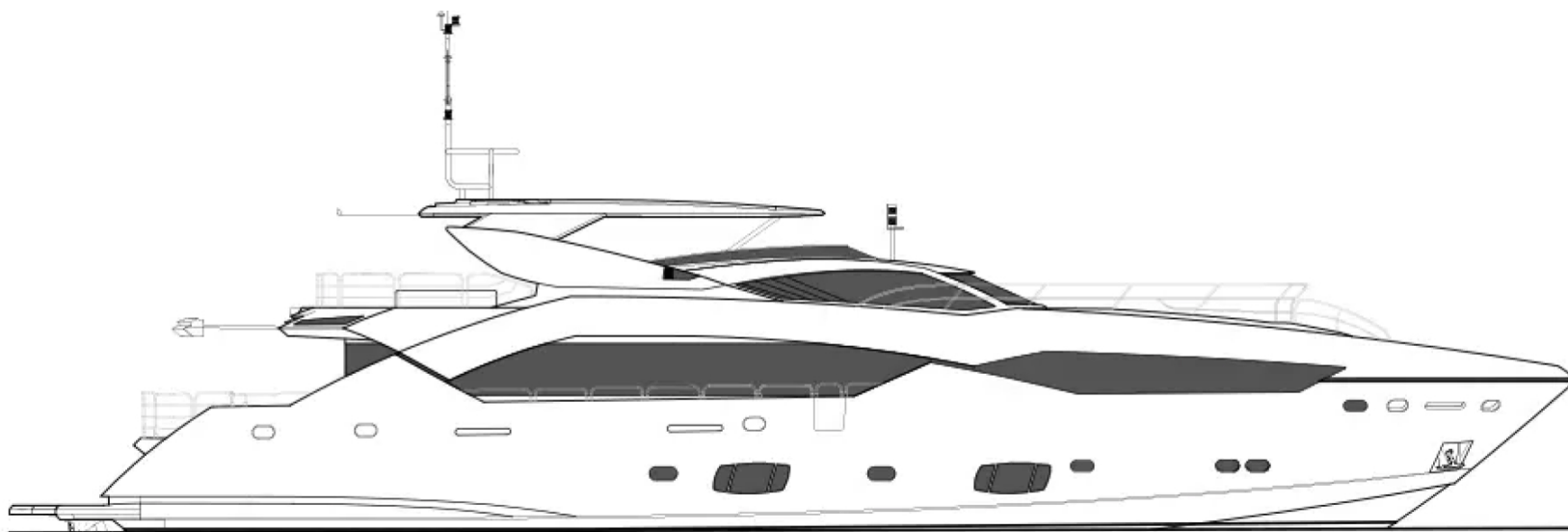
GUEST CABIN

M/Y LADY VOLANTIS



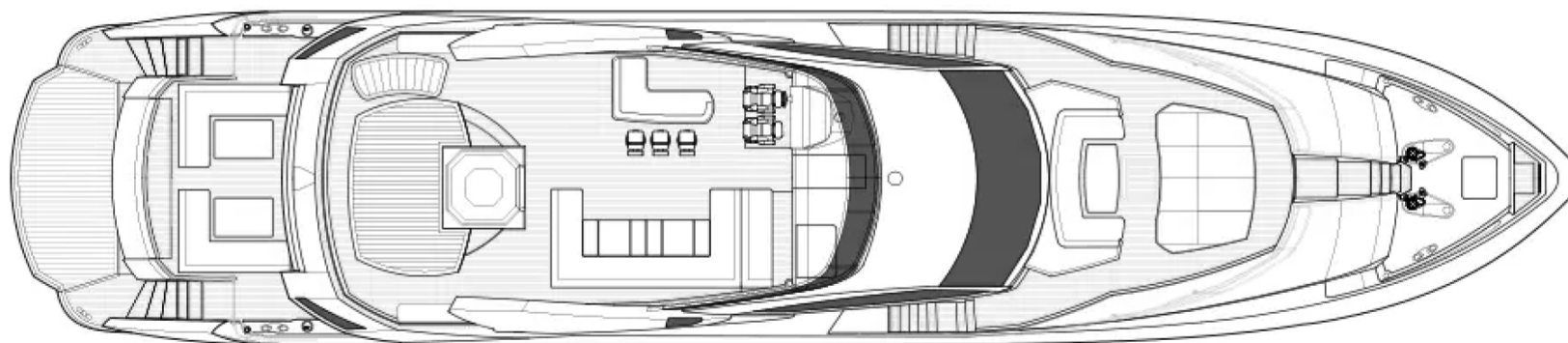
# General Arrangement





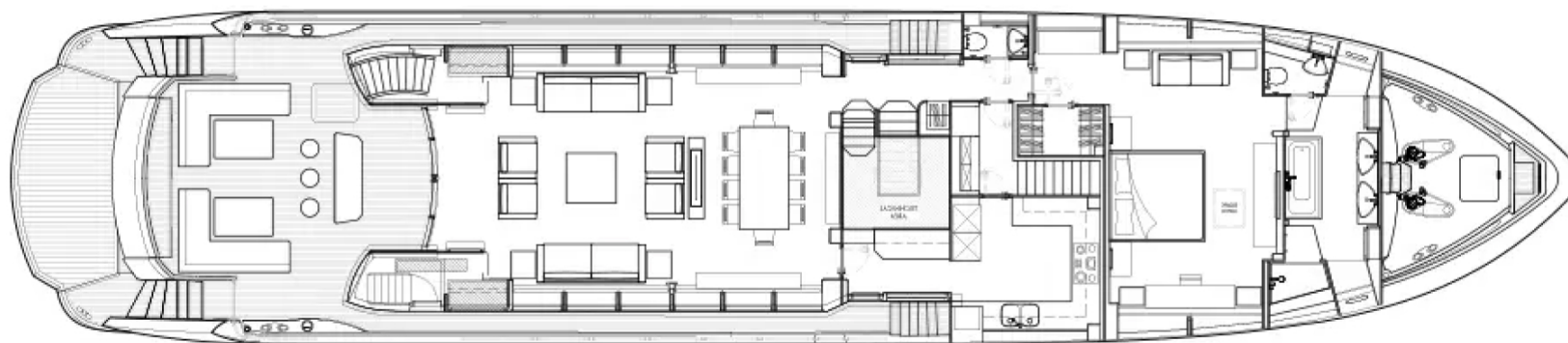
PROFILE





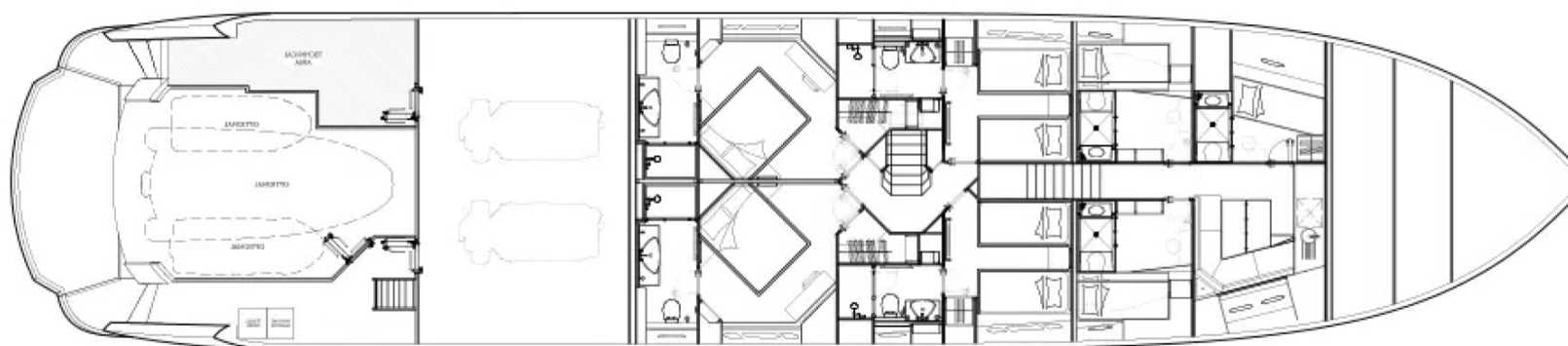
FLYBRIDGE





MAIN DECK





LOWER DECK





## KIRILL KUATOV

+377 607 93 15 20

+39 333 576 44 44

 [Send e-mail](#)

 WhatsApp

 Telegram

[More information about M/Y LADY VOLANTIS at www.nauyachts.com](http://www.nauyachts.com)

[Watch video](#)