



Brokerage

NAU
YACHTS

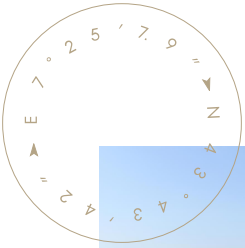
FATSA

MOTOR YACHT SANLORENZO 28.93M 2021

€7,750,000
FLAG - GREECE

MOTOR YACHT

FATSA



Launched in 2021, **FATSA** is a 29-meter **Sanlorenzo SD96** motor yacht that blends the classical lines of a semi-displacement hull with contemporary engineering and interior design. The exterior, created by Zuccon International Project, emphasizes balanced proportions and clean geometry, while the interior by Patricia Urquiola is defined by natural materials, soft forms and a calm, cohesive palette.

The layout accommodates 11 guests across five cabins, including a full-beam master suite on the main deck. The lower deck features two VIP suites and two twin cabins, one of which is equipped with an additional Pullman berth.

Powered by twin 1,361 hp MTU engines, **FATSA** reaches a maximum speed of approximately 17 knots and cruises at around 13.5 knots. The yacht is equipped with stabilizers that enhance comfort underway and at anchor by reducing roll and vibration in varying sea conditions. Exterior spaces include a generous aft terrace and a versatile flybridge designed for relaxation, open-air dining and sunbathing.

FATSA is maintained in excellent technical condition and holds commercial registration, making it equally attractive for private use and charter operations. The yacht's Best Layout Trophy award highlights the quality of its design solutions and onboard ergonomics, which set it apart within its class.

[see more information about M/Y FATSA at www.nauyachts.com](http://www.nauyachts.com)

SPECIFICATION

SHIPYARD, MODEL	Sanlorenzo SD96
BUILT	2021
LENGTH	28.93 m
WATERLINE LENGTH	25.42 m
HULL CONFIGURATION	SEMI-DISPLACEMENT
BEAM	7.6 m
RANGE	2000
DRAFT	1.95 m
GROSS TONNAGE	180 GT
YACHT CLASS	RINA
CABINS	5+3
MASTER CABIN	MAIN DECK
GUESTS	11
BERTHS	11+5
CREW	5
HEADS	6+3

EXTERIOR DESIGN	ZUCCON INTERNATIONAL PROJECT
INTERIOR DESIGN	PATRICIA URQUIOLA
HULL	GRP
SUPERSTRUCTURE	GRP
ENGINES	2 x MTU 10V2000M86 1361 h.p.
TYPE OF DRIVE	SHAFT LINE
ENGINE HOURS	1161 h
MAXIMUM SPEED	17 kn
CRUISING SPEED	13.5 kn
FUEL CONSUMPTION AT ECONOMICAL SPEED	~ 400 l/h
FUEL	15500 l
GREY WATER	1000 l
BLACK WATER	1000 l
FRESH WATER	2500 l
DISPLACEMENT	132

[see more information about M/Y FATSA at www.nauyachts.com](http://www.nauyachts.com)



EXTERIOR SANLORENZO SD96 2021 MY FASTA

M/Y FATSA



EXTERIOR SANLORENZO SD96 2021 MY FASTA

M/Y FATSA



BOW LOUNGE AREA

M/Y FATSA



BOW LOUNGE AREA

M/Y FATSA



BOW LOUNGE AREA

M/Y FATSA



FLYBRIDGE DINING AREA

M/Y FATSA



FLYBRIDGE AFT SUNBATHING AREA

M/Y FATSA



COCKPIT DINING AREA

M/Y FATSA



MAIN SALON LOUNGE AREA

M/Y FATSA



MAIN SALON LOUNGE AREA

M/Y FATSA



MAIN SALON LOUNGE AREA

M/Y FATSA



MAIN SALON BAR

M/Y FATSA



MAIN HELM STATION

M/Y FATSA



MASTER CABIN

M/Y FATSA



MASTER BATHROOM

M/Y FATSA



VIP CABIN

M/Y FATSA



VIP BATHROOM

M/Y FATSA



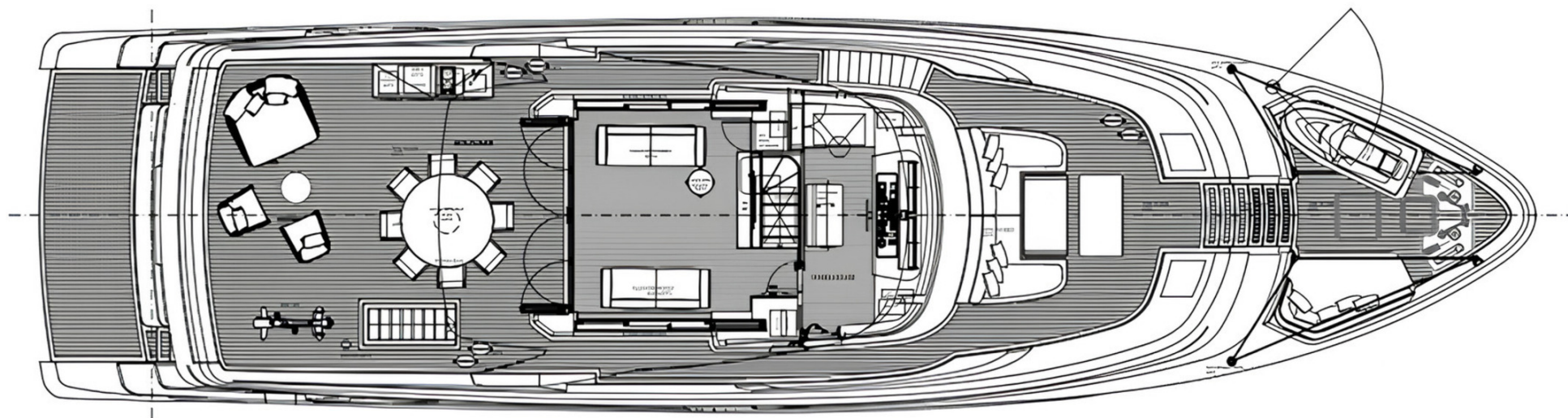
GUEST CABIN

M/Y FATSA

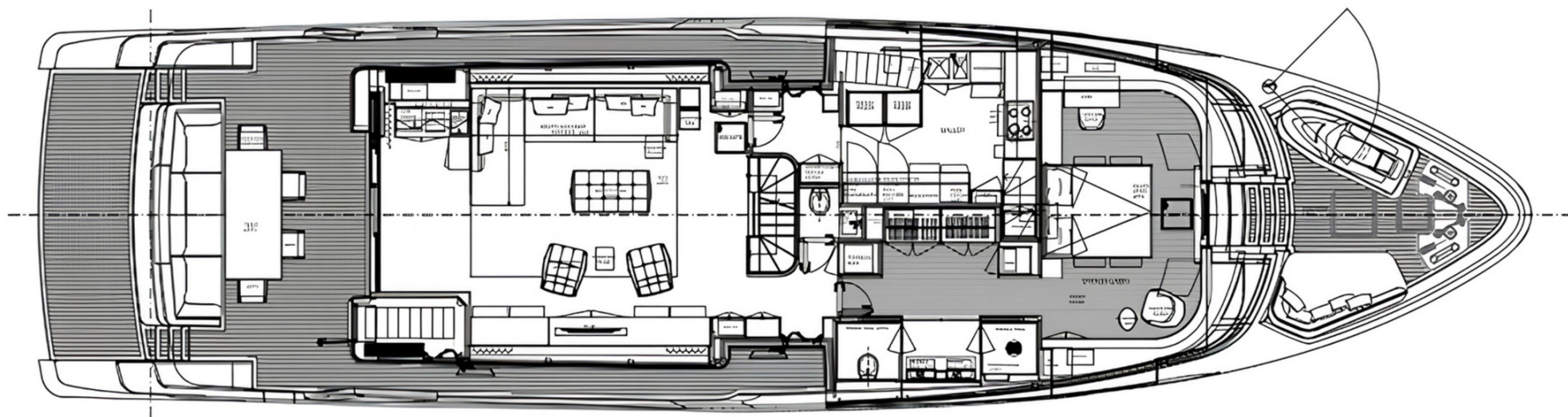
General Arrangement



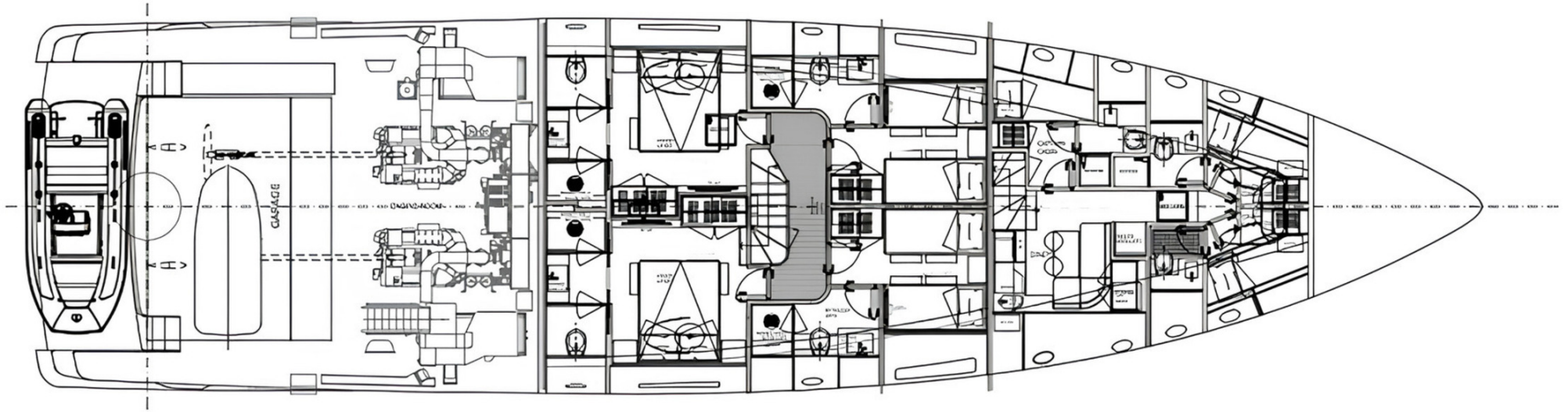
PROFILE



FLYBRIDGE



MAIN DECK



LOWER DECK



KIRILL KUATOV

+377 607 93 15 20

+39 333 576 44 44

 [Send e-mail](#)

 WhatsApp

 Telegram

[More information about M/Y FATSA at www.nauyachts.com](#)

[Watch video](#)