



New Build

NAU
YACHTS

DUCALE 140

MOTOR YACHT OCEAN KING 42.5M 2028

FLAG -

MOTOR YACHT

DUCALE 140



DUCALE 140 is a 42.5-metre explorer yacht with a steel hull and aluminium superstructure, designed to maximize the connection with the ocean. The structural layout minimizes internal supports, creating spacious, light-filled interiors, while floor-to-ceiling panoramic windows, glass balustrades, and cantilevered decks provide uninterrupted views and versatile outdoor living areas.

Built for long-range cruising, the yacht has a range of up to 5,000 nautical miles. Powered by two MAN D2862 LE 489 V12 engines producing 1,450 hp each, she reaches a maximum speed of 15 knots and a cruising speed of 13 knots. Thoughtful insulation and interior layout ensure near-silent operation, while the modern helm station and well-organized engine room make handling effortless.

Accommodation is provided for 12 guests across six cabins, including a bright and airy master suite with the option to be located on the upper deck. The 9-member crew has comfortable and functional quarters. Outdoor leisure is enhanced by two jacuzzis, located on the aft deck and the sundeck.

With a displacement of 440 GT and a draft of 2.49 m, the **DUCALE 140** combines spaciousness, performance, and contemporary design, offering a unique explorer yacht experience with maximum proximity to the sea.

[see more information about M/Y DUCALE 140 at www.nauyachts.com](http://www.nauyachts.com)

SPECIFICATION

SHIPYARD, MODEL	Ocean King DUCALE 140
DELIVERY AT THE SHIPYARD	2028
LENGTH	42.5 m
WATERLINE LENGTH	38.2 m
HULL CONFIGURATION	DISPLACEMENT
BEAM	8.6 m
RANGE	4000
DRAFT	2.5 m
GROSS TONNAGE	440 GT
YACHT CLASS	RINA
CABINS	6+5
MASTER CABIN	MAIN DECK
GUESTS	12
BERTHS	12+9
CREW	9
HEADS	7+5

EXTERIOR DESIGN	VYD STUDIO
INTERIOR DESIGN	OCEAN KING
HULL	STEEL
SUPERSTRUCTURE	ALUMINIUM
ENGINES	2 x MAN D2862 LE489 V12
TYPE OF DRIVE	SHAFT LINE
ENGINE HOURS	N/A
MAXIMUM SPEED	15 kn
CRUSING SPEED	13 kn
FUEL CONSUMPTION AT ECONOMICAL SPEED	N/A
FUEL	50000 l
GREY WATER	4000 l
BLACK WATER	3000 l
FRESH WATER	14000 l
DISPLACEMENT	390

[see more information about M/Y DUCALE 140 at www.nauyachts.com](http://www.nauyachts.com)



EXTERIOR OCEAN KING DUCALE 140

M/Y DUCALE 140



EXTERIOR OCEAN KING DUCALE 140

M/Y DUCALE 140



EXTERIOR OCEAN KING DUCALE 140

M/Y DUCALE 140



MAIN SALON LOUNGE AREA

M/Y DUCALE 140



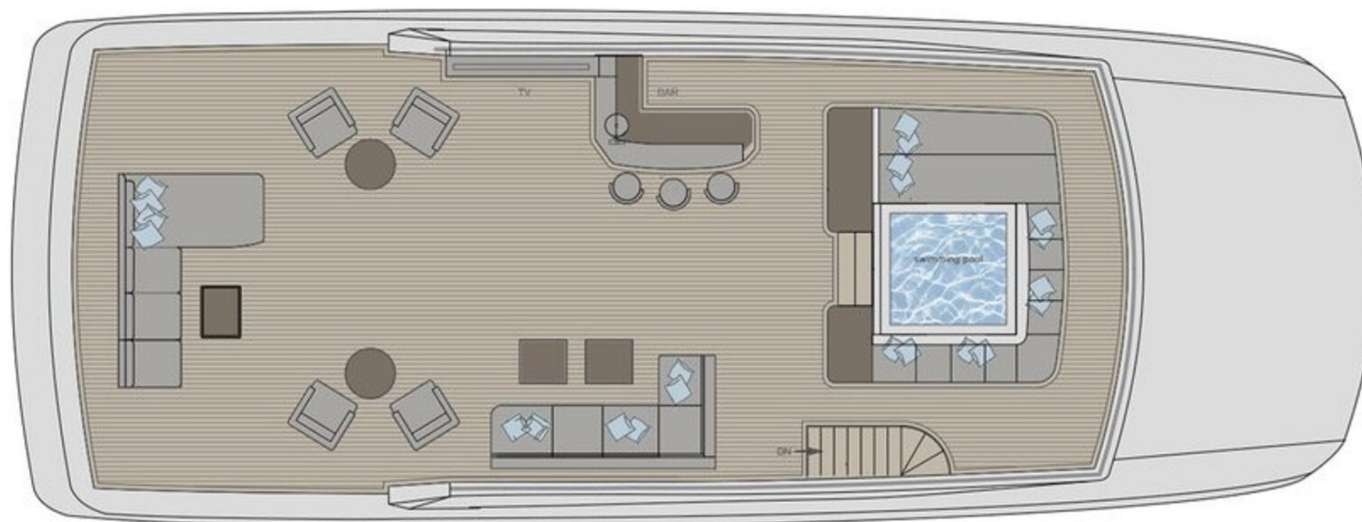
MASTER CABIN

M/Y DUCALE 140

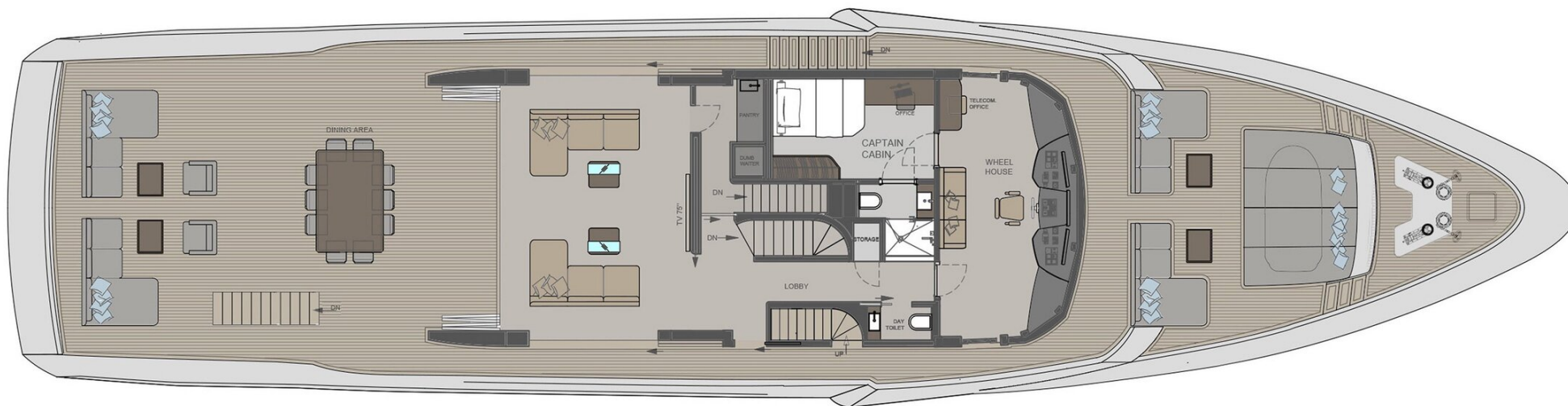
General Arrangement



PROFILE



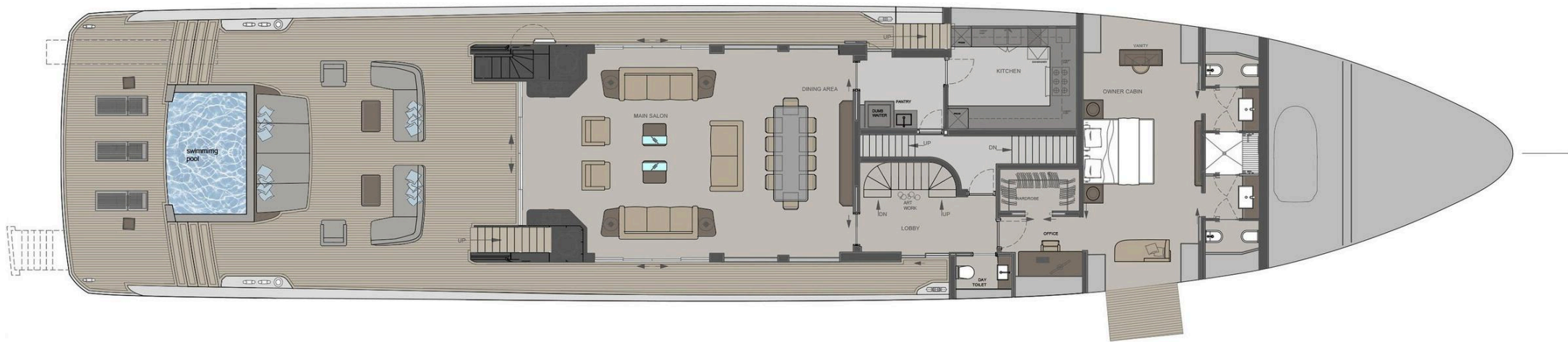
SUNDECK



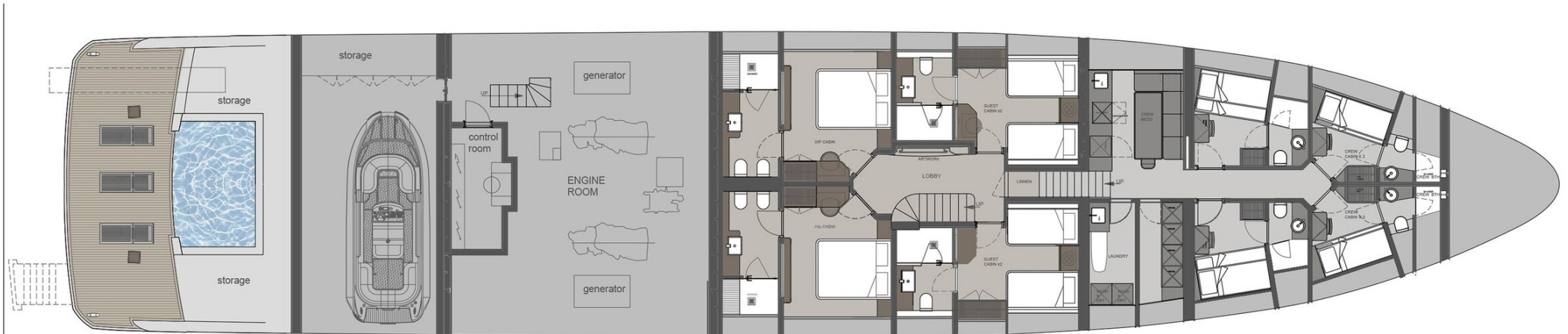
UPPER DECK VERS. 1



UPPER DECK VERS.2



MAIN DECK



LOWER DECK



KIRILL KUATOV

+377 607 93 15 20

+39 333 576 44 44

[Send e-mail](#)

[WhatsApp](#)

[Telegram](#)