



New Build

NAU
YACHTS

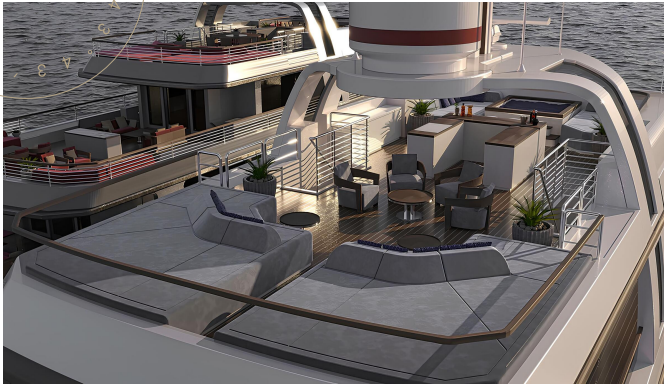
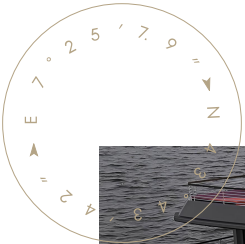
DEIMOS

MOTOR YACHT AEGEAN YACHTS 43.4M 2028

€22,900,000
FLAG -

MOTOR YACHT

DEIMOS



DEIMOS - a 43.4-metre explorer yacht designed by **Gian Paolo Nari** and currently under construction at Aegean Yacht, where traditional shipbuilding expertise meets modern engineering. Conceived as a navetta-style project and kept under the 500 GT threshold, she combines long-range capability, operational ease and a contemporary design language.

Her steel hull and aluminium superstructure create a robust, well-balanced platform for extended itineraries. The exterior architecture emphasises functionality and clean geometry, with the standout feature being the aft pool on the main deck - a defining space that offers a seamless connection to the sea and an inviting environment for relaxing at anchor.

Interior volume is organised for up to 12 guests across six cabins. The owner's suite exceeds 37 m² and is distinguished by its private 12 m² terrace - a feature exceptionally rare on a yacht of this length.

Technical specifications support autonomous cruising: MAN D2862 LE466 engines deliver a cruising speed of around 12 knots and a top speed of 14 knots, while fuel capacity of 45,000 litres and 7,000 litres of fresh water enables long passages without frequent stops. Large storage volumes are designed to accommodate equipment, provisions and gear for expedition-style voyages.

Scheduled for delivery in 2028, **DEIMOS** offers a rare opportunity to acquire a new explorer yacht with notable range, modern naval architecture and a uniquely configured owner's suite. Suitable for both private use and charter, she promises capability, comfort and a design tailored for life at sea.

see more information about M/Y DEIMOS at www.nauyachts.com

SPECIFICATION

SHIPYARD, MODEL	Aegean Yachts 43M
DELIVERY AT THE SHIPYARD	2028
LENGTH	43.4 m
WATERLINE LENGTH	38.12 m
HULL CONFIGURATION	DISPLACEMENT
BEAM	8.2 m
RANGE	N/A
DRAFT	2.75 m
GROSS TONNAGE	499 GT
YACHT CLASS	N/A
CABINS	6+4
MASTER CABIN	MAIN DECK
GUESTS	12
BERTHS	12+7
CREW	7
HEADS	7+4

EXTERIOR DESIGN	GIAN PAOLO NARI
INTERIOR DESIGN	AEGEAN YACHT
HULL	STEEL
SUPERSTRUCTURE	ALUMINIUM
ENGINES	2 x MAN D2862 LE466 1450 h.p.
TYPE OF DRIVE	SHAFT LINE
ENGINE HOURS	N/A
MAXIMUM SPEED	14 kn
CRUSING SPEED	12 kn
FUEL CONSUMPTION AT ECONOMICAL SPEED	N/A
FUEL	45000 l
GREY WATER	N/A
BLACK WATER	N/A
FRESH WATER	7000 l
DISPLACEMENT	N/A

[see more information about M/Y DEIMOS at www.nauyachts.com](http://www.nauyachts.com)



EXTERIOR AEGEAN YACHT 43M MY DEIMOS

M/Y DEIMOS



EXTERIOR AEGEAN YACHT 43M MY DEIMOS

M/Y DEIMOS



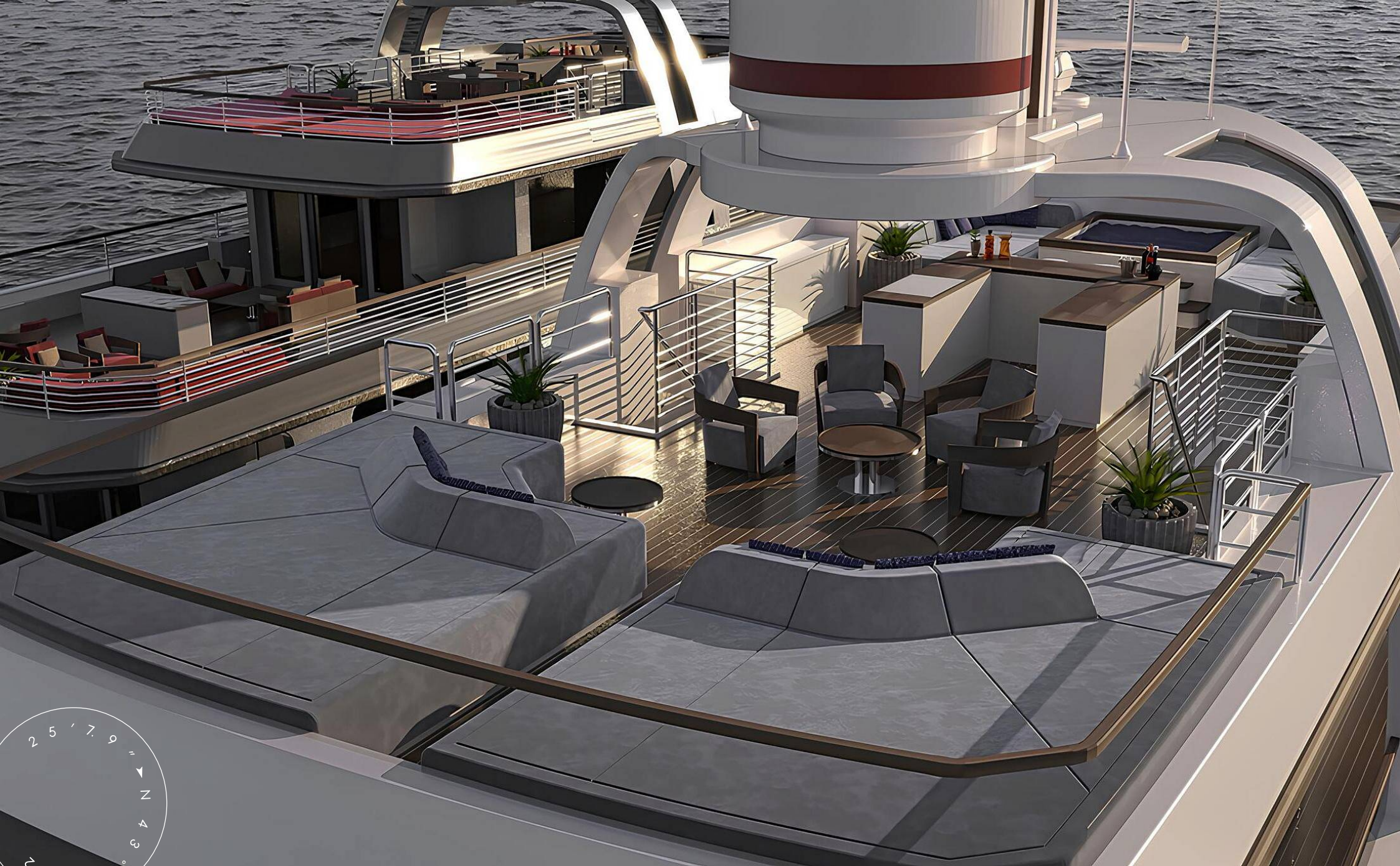
EXTERIOR AEGEAN YACHT 43M MY DEIMOS

M/Y DEIMOS



EXTERIOR AEGEAN YACHT 43M MY DEIMOS

M/Y DEIMOS





AFT MAIN DECK LOUNGE AREA

M/Y DEIMOS



MAIN SALON LOUNGE AREA

M/Y DEIMOS



MAIN SALON DINING AREA

M/Y DEIMOS



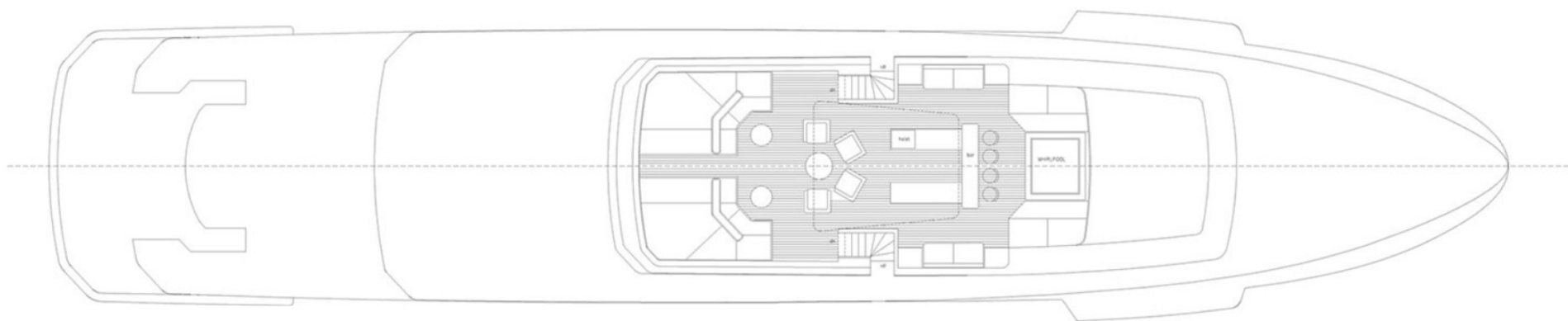
MASTER CABIN

M/Y DEIMOS

General Arrangement



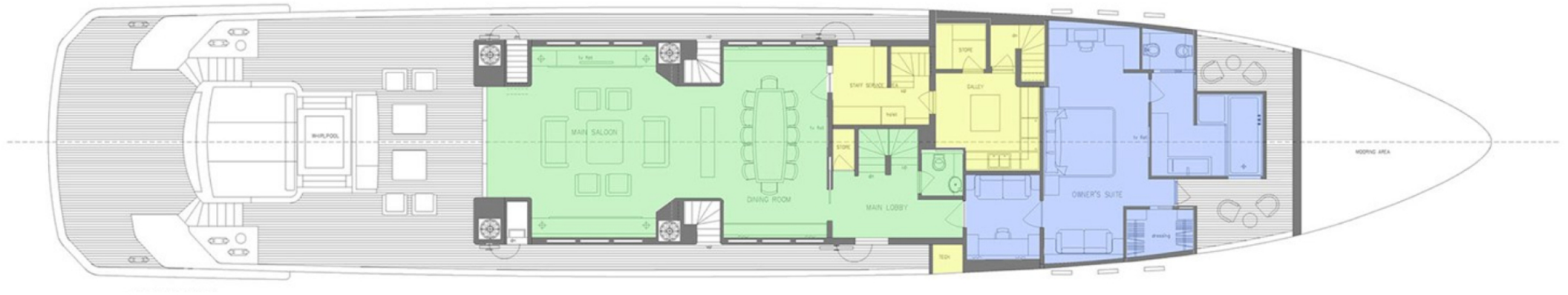
PROFILE



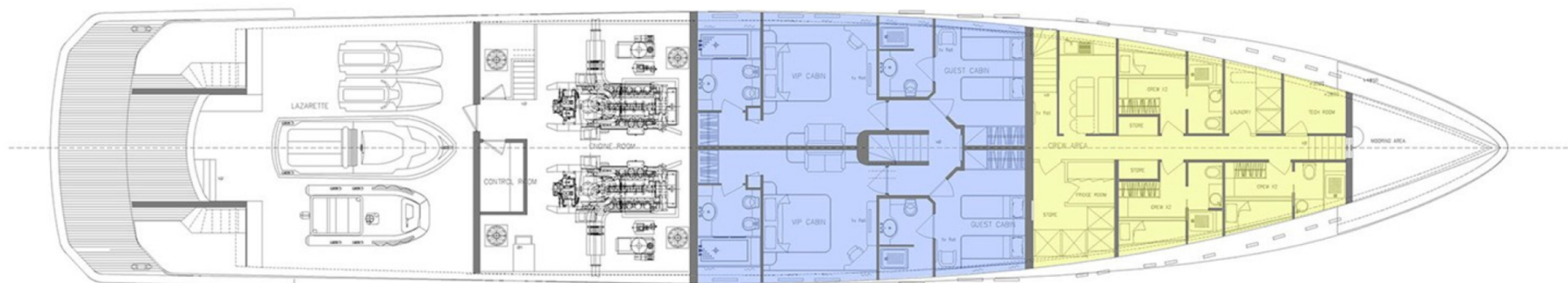
SUNDECK



UPPER DECK



MAIN DECK



LOWER DECK



KIRILL KUATOV

+377 607 93 15 20

+39 333 576 44 44

 [Send e-mail](#)

 WhatsApp

 Telegram