



New Build

NAU
YACHTS

PHOBOS

MOTOR YACHT AEGEAN YACHTS 43.4M 2028

€22,900,000
FLAG -

MOTOR YACHT

PHOBOS



PHOBOS - a 43.4-metre explorer yacht designed by Gian Paolo Nari and currently under construction at **Aegean Yacht**, where traditional shipbuilding expertise meets contemporary engineering. Conceived as a navetta-style project and kept under the 500 GT threshold, she combines long-range capability, operational practicality and a clean, modern design language. This is the dedicated expedition version, distinguished by enlarged storage volumes, two aft garages and a forward tender bay - a configuration that allows extensive capacity for tenders, watercraft and expedition equipment.

Accommodation is designed for 12 guests across six cabins. The owner's suite, measuring approximately 37 m², is complemented by a private 12 m² terrace with panoramic views - a feature seldom found on yachts of this size. Crew quarters include four cabins plus a captain's cabin adjacent to the wheelhouse, ensuring efficient operations and guest privacy.

Her technical platform is optimised for autonomy. Twin MAN D2862 LE466 engines deliver a cruising speed of around 12 knots and a top speed of 14 knots, while fuel capacity of 45,000 litres and 7,000 litres of fresh water supports extended passages without the need for frequent resupply. Generous storage areas are designed to accommodate equipment, provisions and expedition gear for long-range itineraries. Scheduled for delivery in 2028, **PHOBOS** offers a rare opportunity to acquire a new explorer yacht with increased range, contemporary naval architecture and a standout owner's suite. Equally suited to private exploration or charter use, she provides a versatile and highly capable platform for global cruising.

see more information about M/Y PHOBOS at www.nauyachts.com

SPECIFICATION

SHIPYARD, MODEL	Aegean Yachts 43M
DELIVERY AT THE SHIPYARD	2028
LENGTH	43.4 m
WATERLINE LENGTH	38.12 m
HULL CONFIGURATION	DISPLACEMENT
BEAM	8.2 m
RANGE	N/A
DRAFT	2.75 m
GROSS TONNAGE	499 GT
YACHT CLASS	N/A
CABINS	6+4
MASTER CABIN	MAIN DECK
GUESTS	12
BERTHS	12+7
CREW	7
HEADS	7+4

EXTERIOR DESIGN	GIAN PAOLO NARI
INTERIOR DESIGN	AEGEAN YACHT
HULL	STEEL
SUPERSTRUCTURE	ALUMINIUM
ENGINES	2 x MAN D2862 LE466 1450 h.p.
TYPE OF DRIVE	SHAFT LINE
ENGINE HOURS	N/A
MAXIMUM SPEED	14 kn
CRUSING SPEED	12 kn
FUEL CONSUMPTION AT ECONOMICAL SPEED	N/A
FUEL	45000 l
GREY WATER	N/A
BLACK WATER	N/A
FRESH WATER	7000 l
DISPLACEMENT	N/A

[see more information about M/Y PHOBOS at www.nauyachts.com](http://www.nauyachts.com)



PROFILE AEGEAN YACHT 43M MY PHOBOS

M/Y PHOBOS



PROFILE AEGEAN YACHT 43M MY PHOBOS

M/Y PHOBOS



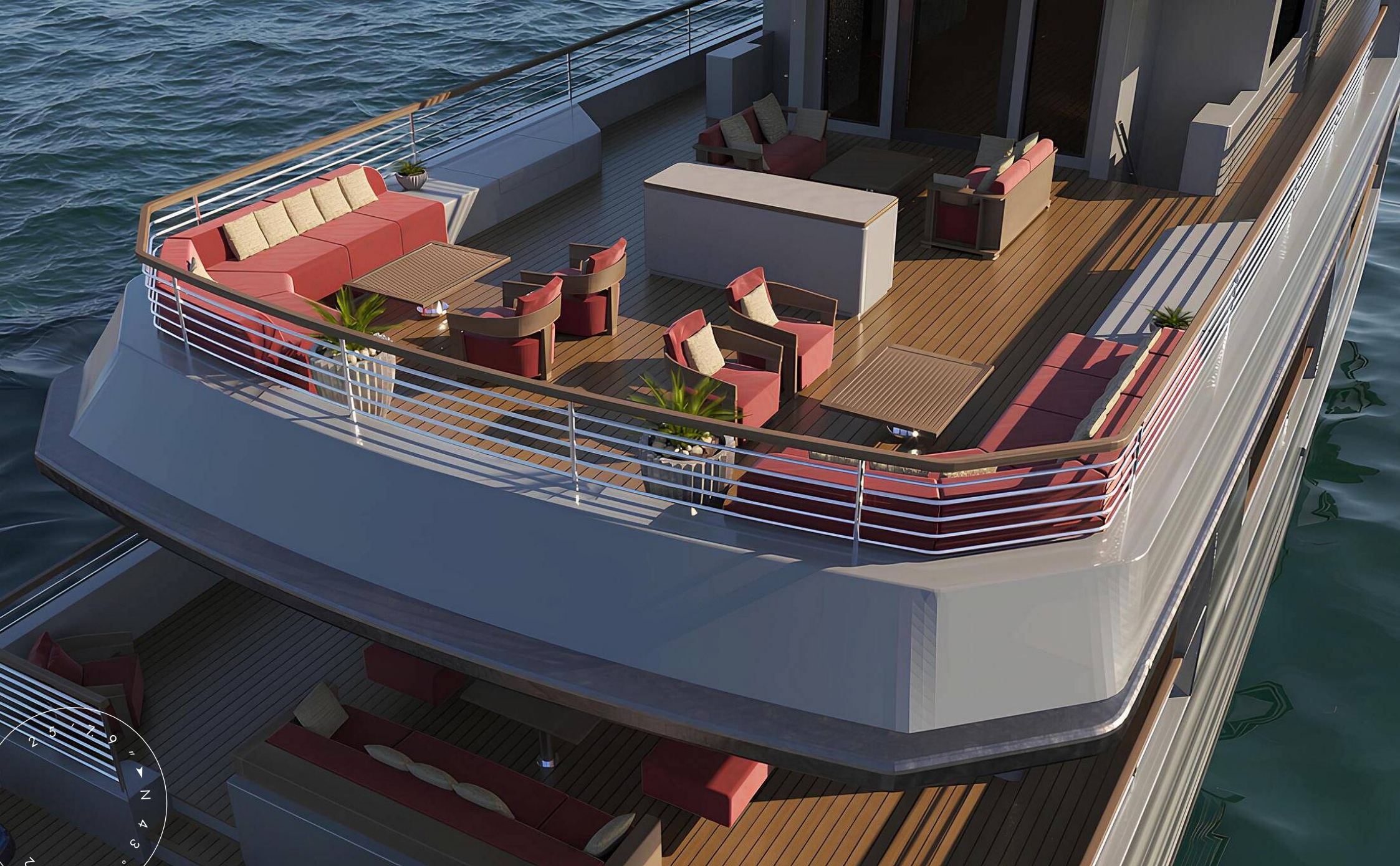
PROFILE AEGEAN YACHT 43M MY PHOBOS

M/Y PHOBOS



BOW AREA

M/Y PHOBOS



AFT UPPER DECK LOUNGE AREA

M/Y PHOBOS



GARAGE

M/Y PHOBOS



MAIN SALON LOUNGE AREA

M/Y PHOBOS



MAIN SALON DINING AREA

M/Y PHOBOS



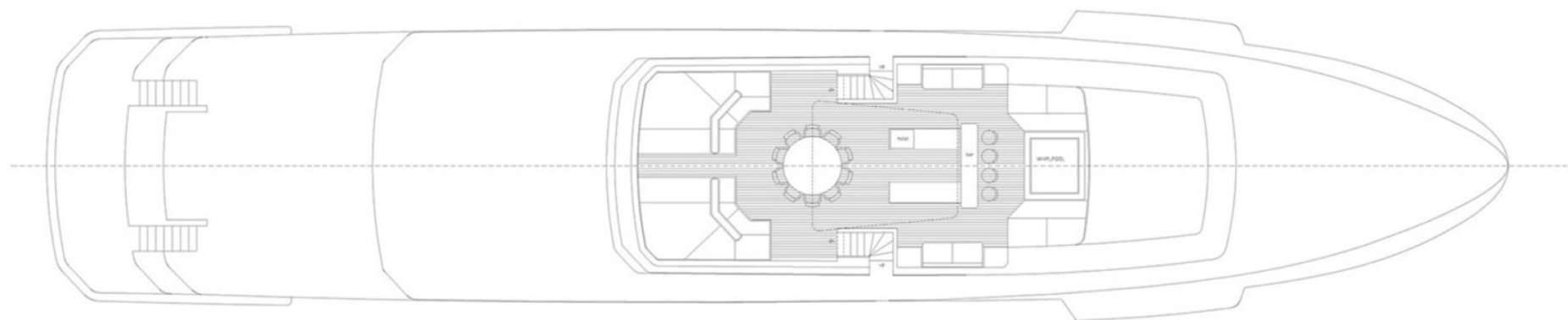
MASTER CABIN

M/Y PHOBOS

General Arrangement



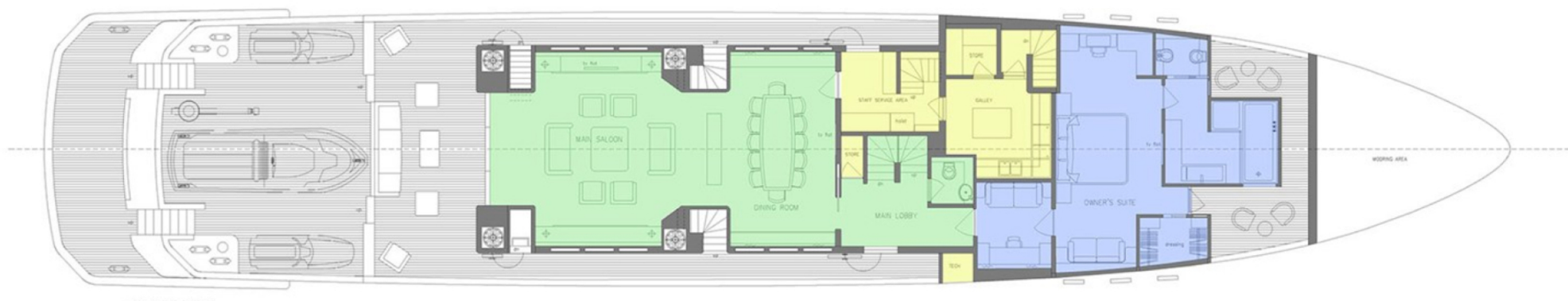
PROFILE



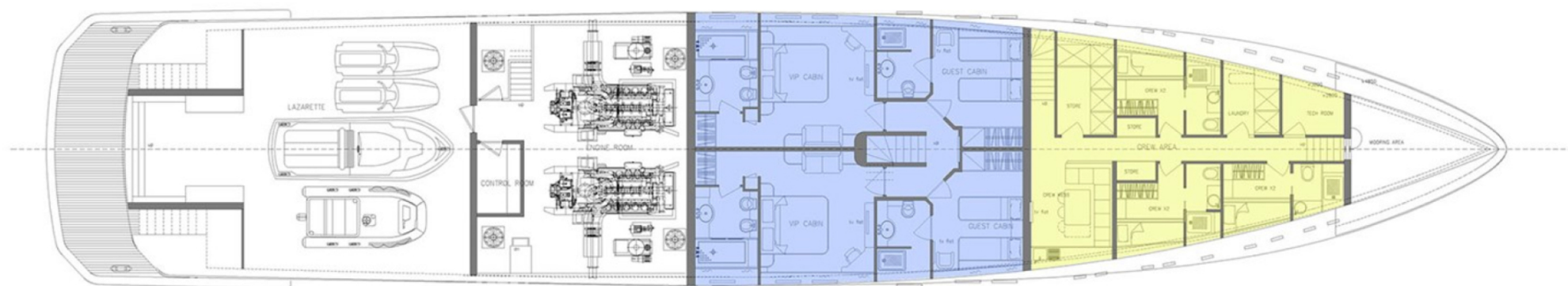
SUNDECK



UPPER DECK



MAIN DECK



LOWER DECK



KIRILL KUATOV

+377 607 93 15 20

+39 333 576 44 44

 [Send e-mail](#)

 WhatsApp

 Telegram