



Brokerage

NAU
YACHTS

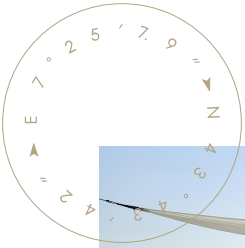
SANLORENZO SX88 #85

MOTOR YACHT SANLORENZO 26.7M 2022

€5,800,000
FLAG -

MOTOR YACHT

SANLORENZO SX88 #85



Sanlorenzo SX88 #85 is a 26.7-metre motor yacht delivered in 2022. A defining feature of the model is the forward-shifted hull and superstructure, which allows for an expansive open aft terrace positioned at water level. This architectural solution shapes the yacht's overall functional character and makes her highly versatile in operation.

The main deck is designed as a continuous open-plan space, seamlessly integrating the salon, dining area and forward lounge with no level changes. All helm operations are moved to the flybridge, where an enclosed wheelhouse is located, freeing the entire main deck volume for guest living areas. The hull and superstructure are constructed in fiberglass, while the deep-V hull form paired with three Volvo Penta IPS engines ensures excellent manoeuvrability and efficient fuel consumption. The yacht reaches a maximum speed of 23 knots and cruises comfortably at approximately 20 knots.

Accommodation is provided for up to 8 guests in four cabins: a master suite, a VIP cabin, and two guest cabins. The three-person crew is housed in the aft section with separate access, ensuring privacy for guests. The interior configuration has been significantly upgraded to a custom specification: a redesigned galley layout in the forward section, enlarged storage volumes, an expanded set of household appliances, integrated blackout systems and enhanced interior finishes. Additional sound insulation and lift-up bed mechanisms further improve onboard comfort.

Equipment includes zero-speed stabilisers, an extended Raymarine navigation suite, a CCTV system, an Idromar watermaker, two generators, a lithium-ion battery pack for auxiliary systems, and a fully integrated multimedia network.

Sanlorenzo SX88 #85 represents a yacht defined by unified architecture, optimised ergonomics and a comprehensive technical specification.

[see more information about M/Y SANLORENZO SX88 #85 at www.nauyachts.com](http://www.nauyachts.com)

SPECIFICATION

SHIPYARD, MODEL	Sanlorenzo SX88
BUILT	2022
LENGTH	26.7 m
WATERLINE LENGTH	23.4 m
HULL CONFIGURATION	SEMI-DISPLACEMENT
BEAM	7.2 m
RANGE	1200
DRAFT	1.7 m
GROSS TONNAGE	116 GT
YACHT CLASS	RINA
CABINS	4+1
MASTER CABIN	LOWER DECK
GUESTS	8
BERTHS	8+4
CREW	3
HEADS	4+1

EXTERIOR DESIGN	OFFICINA ITALIANA DESIGN
INTERIOR DESIGN	OFFICINA ITALIANA DESIGN
HULL	GRP
SUPERSTRUCTURE	GRP
ENGINES	3 x Volvo Penta IPS 800 h.p.
TYPE OF DRIVE	VOLVO PENTA IPS
ENGINE HOURS	N/A
MAXIMUM SPEED	23 kn
CRUISING SPEED	20 kn
FUEL CONSUMPTION AT ECONOMICAL SPEED	~ 410 l/h
FUEL	9300 l
GREY WATER	550 l
BLACK WATER	550 l
FRESH WATER	2000 l
DISPLACEMENT	82

[see more information about M/Y SANLORENZO SX88 #85 at www.nauyachts.com](http://www.nauyachts.com)



EXTERIOR SANLORENZO SX88 #85 2022

M/Y SANLORENZO SX88 #85



BOW LOUNGE AREA

M/Y SANLORENZO SX88 #85



BEACH CLUB

M/Y SANLORENZO SX88 #85



SWIMMING PLATFORM

M/Y SANLORENZO SX88 #85



MAIN SALON LOUNGE AREA ЗОНА ДЛЯ
ОТДЫХА В ВЕРХНЕМ САЛОНЕ

M/Y SANLORENZO SX88 #85



MAIN SALON LOUNGE AREA ЗОНА ДЛЯ
ОТДЫХА В ВЕРХНЕМ САЛОНЕ

M/Y SANLORENZO SX88 #85



MAIN SALON LOUNGE AREA ЗОНА ДЛЯ
ОТДЫХА В ВЕРХНЕМ САЛОНЕ

M/Y SANLORENZO SX88 #85



MAIN SALON LOUNGE AREA ЗОНА ДЛЯ
ОТДЫХА В ВЕРХНЕМ САЛОНЕ

M/Y SANLORENZO SX88 #85



GALLEY

M/Y SANLORENZO SX88 #85



MASTER CABIN

M/Y SANLORENZO SX88 #85



MASTER CABIN

M/Y SANLORENZO SX88 #85



MASTER CABIN

M/Y SANLORENZO SX88 #85



VIP CABIN

M/Y SANLORENZO SX88 #85



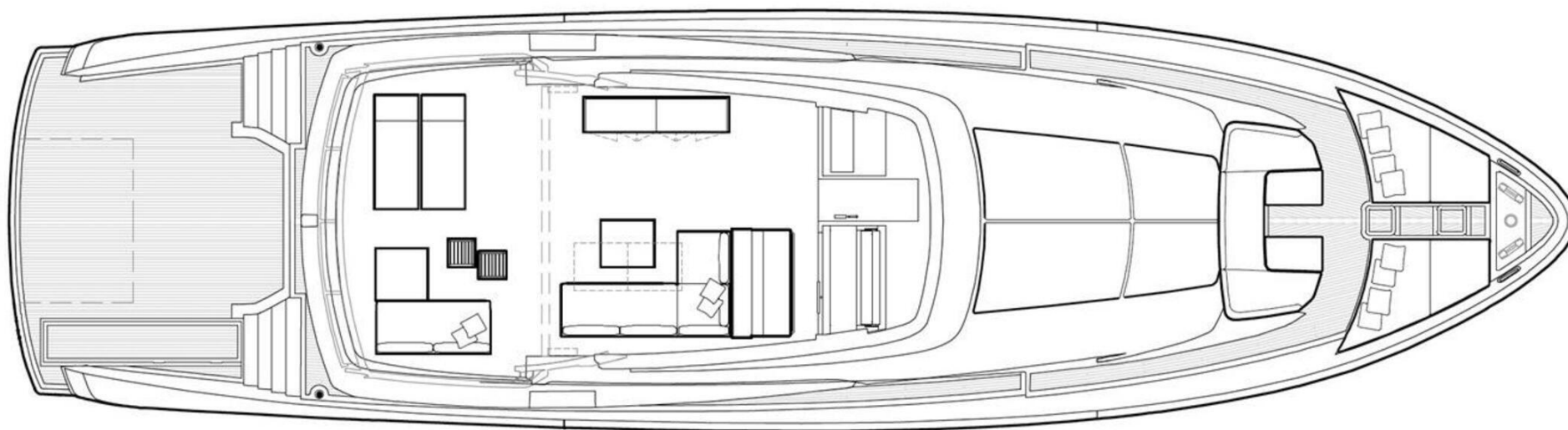
VIP CABIN

M/Y SANLORENZO SX88 #85

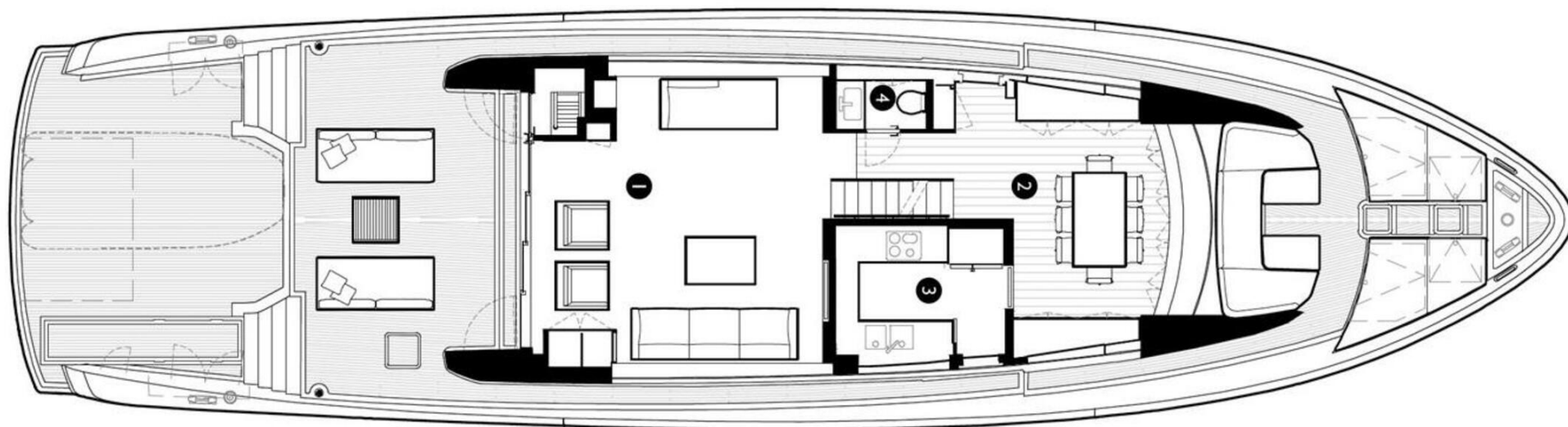
General Arrangement



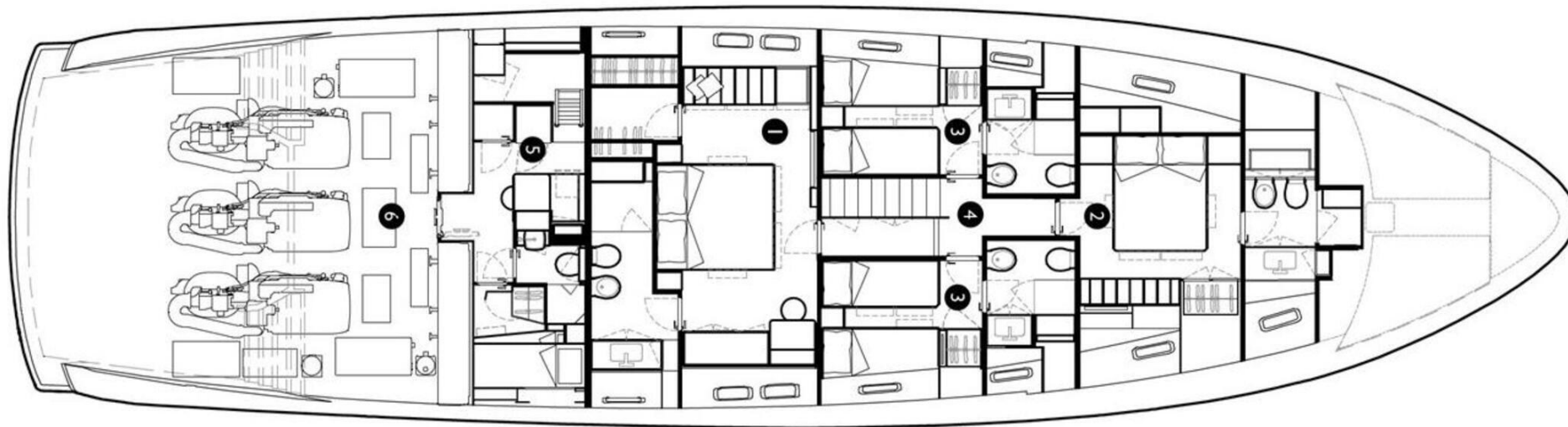
PROFILE



FLYBRIDGE



MAIN DECK



LOWER DECK



KIRILL KUATOV

+377 607 93 15 20

+39 333 576 44 44

 [Send e-mail](#)

 WhatsApp

 Telegram