



Brokerage

NAU  
YACHTS

M&M

MOTOR YACHT SANLORENZO 26.7M 2020

€5,300,000  
FLAG - ITALY

MOTOR YACHT

## M&M



**Sanlorenzo SX88 M&M** is a 26.7-metre yacht delivered in 2020, owned by a single private owner since launch and maintained with a fully transparent service history and minimal engine hours.

The exterior by Officina Italiana Design is built around the idea of maximising visual connection with the sea, while the interior by Lissoni & Partners creates a harmonious flow between all living areas. The main deck is arranged as an open, continuous salon: the lounge, dining area and seamless transition to the cockpit form a single unified space. Clean finishes and well-considered ergonomics highlight the functional nature of the SX line.

On the lower deck, four cabins accommodate eight guests: a full-beam master suite, a VIP cabin and two guest cabins, each with its own en-suite bathroom. The crew of three is housed in an aft crew area with independent access, ensuring guest privacy at all times.

The helm is positioned on the flybridge and combined with an additional relaxation area. The aft section serves as the yacht's primary lounge: the tender is stored on the swim platform and handled via a dedicated crane, and once launched, the area expands to approximately 30 m<sup>2</sup>, transforming into a wide, open terrace at water level.

Three Volvo IPS engines deliver a maximum speed of 23 knots and a cruising speed of about 20 knots, with an economical range of roughly 1,000 nautical miles. **M&M** represents a modern, highly functional **SX88** with an optimised layout and excellent ownership profile.

[see more information about M/Y M&M at www.nauyachts.com](http://www.nauyachts.com)



# SPECIFICATION

SHIPYARD, MODEL	Sanlorenzo SX88
BUILT	2020
LENGTH	26.7 m
WATERLINE LENGTH	23.4 m
HULL CONFIGURATION	SEMI-DISPLACEMENT
BEAM	7.2 m
RANGE	1000
DRAFT	1.7 m
GROSS TONNAGE	116 GT
YACHT CLASS	RINA
CABINS	4+1
MASTER CABIN	MAIN DECK
GUESTS	8
BERTHS	8+3
CREW	3
HEADS	4+1

EXTERIOR DESIGN	OFFICINA ITALIANA DESIGN
INTERIOR DESIGN	LISSONI & PARTNERS
HULL	GRP
SUPERSTRUCTURE	GRP
ENGINES	3 x Volvo Penta IPS 800 h.p.
TYPE OF DRIVE	VOLVO PENTA IPS
ENGINE HOURS	N/A
MAXIMUM SPEED	23 kn
CRUISING SPEED	20 kn
FUEL CONSUMPTION AT ECONOMICAL SPEED	~ 410 l/h
FUEL	9300 l
GREY WATER	550 l
BLACK WATER	550 l
FRESH WATER	2000 l
DISPLACEMENT	82

[see more information about M/Y M&M at www.nauyachts.com](http://www.nauyachts.com)



EXTERIOR SANLORENZO SX88 2020 MY M&M

M/Y M&M





EXTERIOR SANLORENZO SX88 2020 MY M&M

M/Y M&M





EXTERIOR SANLORENZO SX88 2020 MY M&M

M/Y M&M





EXTERIOR SANLORENZO SX88 2020 MY M&M

M/Y M&M





EXTERIOR SANLORENZO SX88 2020 MY M&M

M/Y M&M





EXTERIOR SANLORENZO SX88 2020 MY M&M

M/Y M&M





EXTERIOR SANLORENZO SX88 2020 MY M&M

M/Y M&M





FLYBRIDGE AFT SUNBATHING AREA

M/Y M&M





FLYBRIDGE LOUNGE AREA

M/Y M&M





FLYBRIDGE LOUNGE AREA

M/Y M&M





MAIN HELM STATION

M/Y M&M





BOW LOUNGE AREA

M/Y M&M





BOW LOUNGE AREA

M/Y M&M





BOW LOUNGE AREA

M/Y M&M





COCKPIT SEATING AREA

M/Y M&M





COCKPIT SEATING AREA

M/Y M&M





SWIMMING PLATFORM

M/Y M&M





MAIN SALON LOUNGE AREA

M/Y M&M





## MAIN SALON LOUNGE AREA

M/Y M&M





MAIN SALON LOUNGE AREA

M/Y M&M

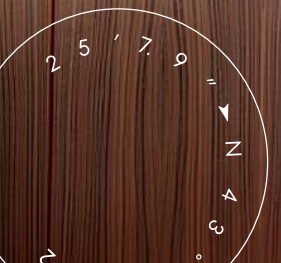




MAIN SALON DINING AREA

M/Y M&M





MAIN SALON DINING AREA

M/Y M&M





MAIN SALON DINING AREA

M/Y M&M





STAIRS FROM MD TO LD

M/Y M&M





MASTER CABIN

M/Y M&M





MASTER CABIN

M/Y M&M





MASTER CABIN

M/Y M&M





MASTER BATHROOM

M/Y M&M





VIP CABIN

M/Y M&M





VIP CABIN

M/Y M&M









GUEST CABIN

M/Y M&M





GUEST BATHROOM

M/Y M&M





GALLEY

M/Y M&M





CREW AREA

M/Y M&M



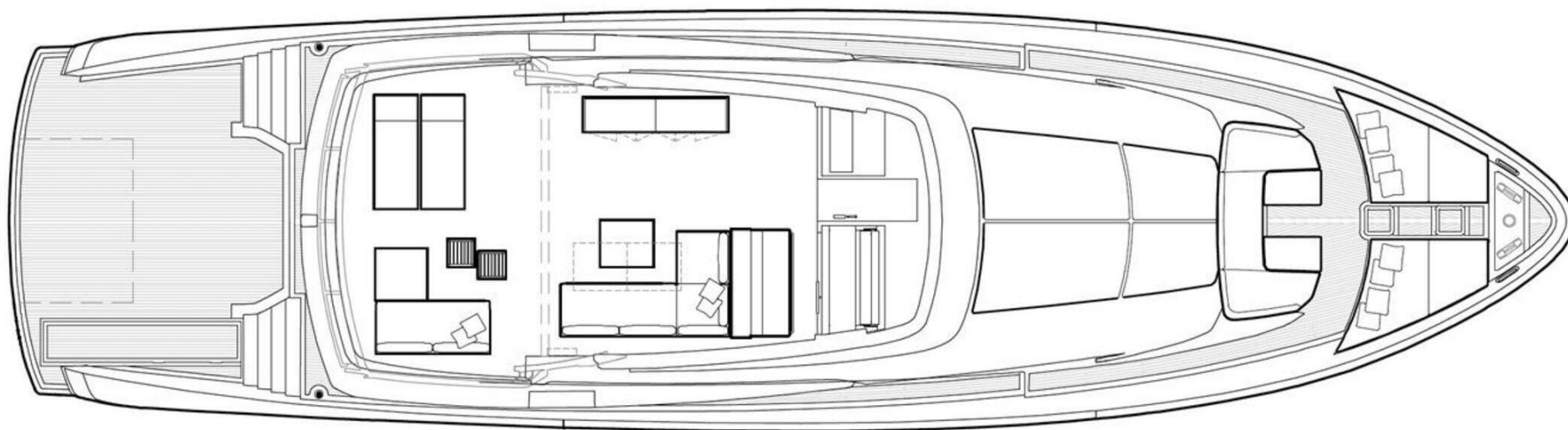
# General Arrangement





PROFILE



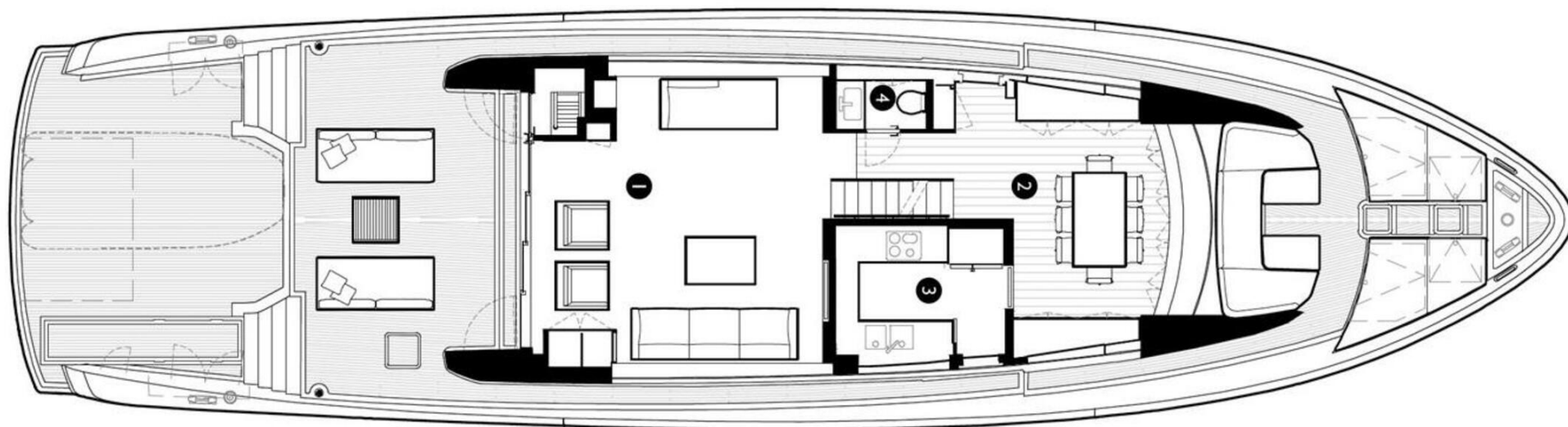


---

---

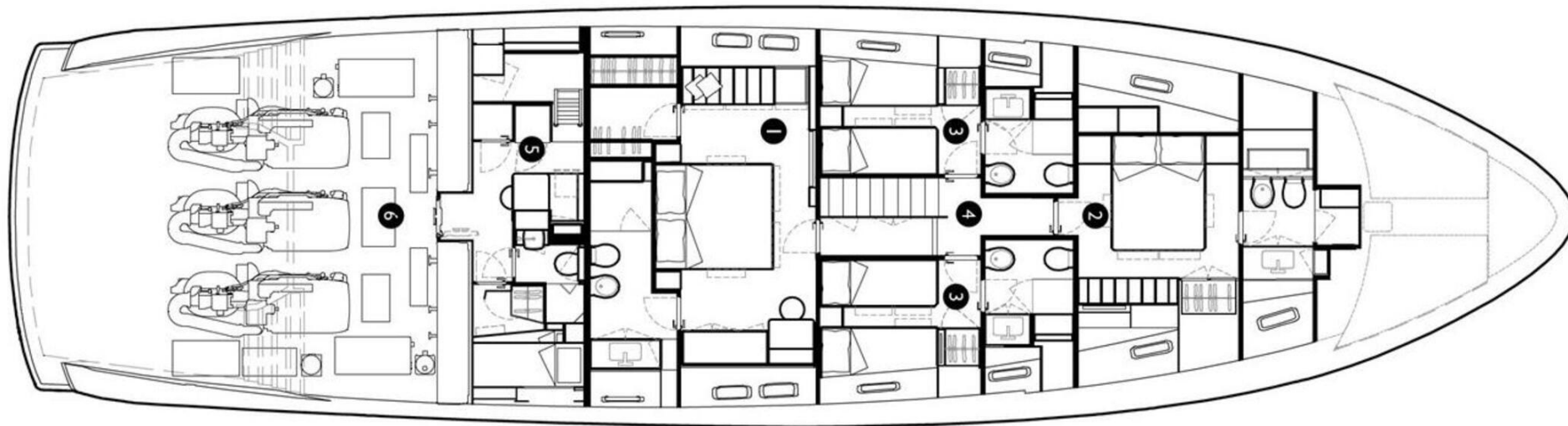
FLYBRIDGE





MAIN DECK





LOWER DECK





KIRILL KUATOV

+377 607 93 15 20

+39 333 576 44 44

 [Send e-mail](#)

 WhatsApp

 Telegram

[More information about M/Y M&M at www.nauyachts.com](http://www.nauyachts.com)

[Watch video](#)