



Brokerage

NAU
YACHTS

ZAFIRO III

MOTOR YACHT SANLORENZO 26.7M 2020

€5,395,000
FLAG -

MOTOR YACHT

ZAFIRO III



ZAFIRO III, delivered in 2020, is a **Sanlorenzo SX88** that blends explorer style architectural elements with the refined Italian engineering typical of the shipyard. Her semi-displacement GRP hull provides stability and efficiency across a range of speeds, while zero-speed and underway stabilisation systems ensure comfort in all sea conditions.

The aft area has been designed as a multifunctional platform with extended deck space and an integrated 1,000 kg hydraulic crane. This layout simplifies the handling of tenders and sports equipment, and once the gear is launched, the aft platform transforms into an open terrace at water level, significantly expanding the outdoor living space. The flybridge is arranged with a generous lounge, dining area and helm station, freeing additional volume on the main deck and enhancing its usability.

The interior was customised to a bespoke specification and features furnishings by Italian manufacturers, Panda White marble in the bathrooms and dining area, and a carefully planned lighting concept. The lower deck accommodates eight guests in four cabins, while the crew of three is housed in the aft quarters with a private entrance, ensuring guest privacy throughout the yacht.

Navigation and entertainment systems include the complete Diamond Navigation package and an upgraded AV suite. Twin 28 kW generators provide dependable power for extended anchorage periods. **ZAFIRO III** is in excellent technical condition, fully equipped and ready for the 2026 season - offering her next owner a highly functional and intelligently configured **SX88**.

[see more information about M/Y ZAFIRO III at www.nauyachts.com](http://www.nauyachts.com)

SPECIFICATION

SHIPYARD, MODEL	Sanlorenzo SX88
BUILT	2020
LENGTH	26.7 m
WATERLINE LENGTH	23.4 m
HULL CONFIGURATION	SEMI-DISPLACEMENT
BEAM	7.2 m
RANGE	1200
DRAFT	1.7 m
GROSS TONNAGE	116 GT
YACHT CLASS	RINA
CABINS	4+1
MASTER CABIN	LOWER DECK
GUESTS	8
BERTHS	8+3
CREW	3
HEADS	4+1

EXTERIOR DESIGN	OFFICINA ITALIANA DESIGN
INTERIOR DESIGN	OFFICINA ITALIANA DESIGN
HULL	GRP
SUPERSTRUCTURE	GRP
ENGINES	3 x Volvo Penta IPS 800 h.p.
TYPE OF DRIVE	VOLVO PENTA IPS
ENGINE HOURS	N/A
MAXIMUM SPEED	23 kn
CRUISING SPEED	20 kn
FUEL CONSUMPTION AT ECONOMICAL SPEED	~ 410 l/h
FUEL	9300 l
GREY WATER	550 l
BLACK WATER	550 l
FRESH WATER	2000 l
DISPLACEMENT	82

[see more information about M/Y ZAFIRO III at www.nauyachts.com](http://www.nauyachts.com)



EXTERIOR SANLORENZO SX88 2020 MY
ZAFIRO III

M/Y ZAFIRO III



EXTERIOR SANLORENZO SX88 2020 MY
ZAFIRO III

M/Y ZAFIRO III



EXTERIOR SANLORENZO SX88 2020 MY
ZAFIRO III

M/Y ZAFIRO III



EXTERIOR SANLORENZO SX88 2020 MY
ZAFIRO III

M/Y ZAFIRO III



EXTERIOR SANLORENZO SX88 2020 MY
ZAFIRO III

M/Y ZAFIRO III



EXTERIOR SANLORENZO SX88 2020 MY
ZAFIRO III

M/Y ZAFIRO III



EXTERIOR SANLORENZO SX88 2020 MY
ZAFIRO III

M/Y ZAFIRO III



SWIMMING PLATFORM AND WATER TOYS

M/Y ZAFIRO III



SWIMMING PLATFORM

M/Y ZAFIRO III



SWIMMING PLATFORM

M/Y ZAFIRO III



SWIMMING PLATFORM AND WATER TOYS

M/Y ZAFIRO III



COCKPIT SEATING AREA

M/Y ZAFIRO III



BOW LOUNGE AREA

M/Y ZAFIRO III



BOW LOUNGE AREA

M/Y ZAFIRO III



BOW LOUNGE AREA

M/Y ZAFIRO III



BOW LOUNGE AREA

M/Y ZAFIRO III



FLYBRIDGE LOUNGE AREA

M/Y ZAFIRO III



FLYBRIDGE AFT SUNBATHING AREA

M/Y ZAFIRO III



FLYBRIDGE LOUNGE AREA

M/Y ZAFIRO III



MAIN HELM STATION

M/Y ZAFIRO III



MAIN HELM STATION

M/Y ZAFIRO III



FLYBRIDGE DINING AREA

M/Y ZAFIRO III



FLYBRIDGE DINING AREA

M/Y ZAFIRO III



FLYBRIDGE DINING AREA

M/Y ZAFIRO III



MAIN SALON LOUNGE AREA

M/Y ZAFIRO III



MAIN SALON LOUNGE AREA

M/Y ZAFIRO III



MAIN SALON LOUNGE AREA

M/Y ZAFIRO III



MAIN SALON LOUNGE AREA

M/Y ZAFIRO III



MAIN SALON LOUNGE AREA

M/Y ZAFIRO III



MAIN SALON LOUNGE AREA

M/Y ZAFIRO III



MAIN SALON DINING AREA

M/Y ZAFIRO III



MAIN SALON DINING AREA

M/Y ZAFIRO III



GALLEY

M/Y ZAFIRO III



STAIRS FROM MD TO LD

M/Y ZAFIRO III



MASTER CABIN

M/Y ZAFIRO III



MASTER CABIN

M/Y ZAFIRO III



MASTER BATHROOM

M/Y ZAFIRO III



MASTER BATHROOM

M/Y ZAFIRO III



MASTER BATHROOM

M/Y ZAFIRO III



VIP CABIN

M/Y ZAFIRO III



VIP CABIN

M/Y ZAFIRO III



VIP BATHROOM

M/Y ZAFIRO III



VIP BATHROOM

M/Y ZAFIRO III



VIP BATHROOM

M/Y ZAFIRO III



GUEST CABIN

M/Y ZAFIRO III



GUEST CABIN

M/Y ZAFIRO III



GUEST BATHROOM

M/Y ZAFIRO III



GUEST BATHROOM

M/Y ZAFIRO III



GUEST CABIN

M/Y ZAFIRO III



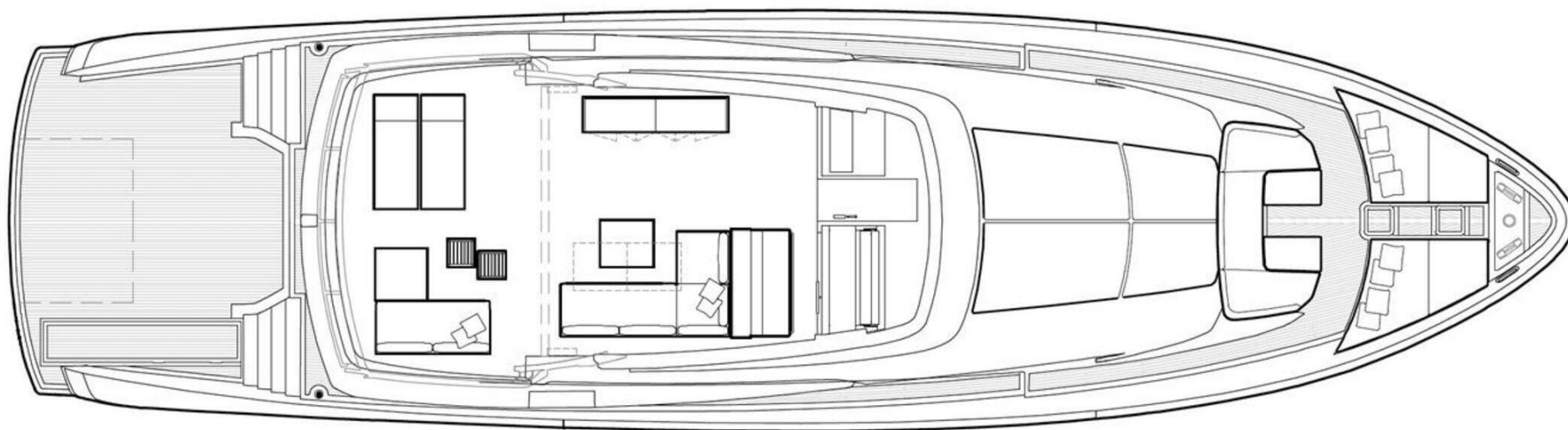
GUEST BATHROOM

M/Y ZAFIRO III

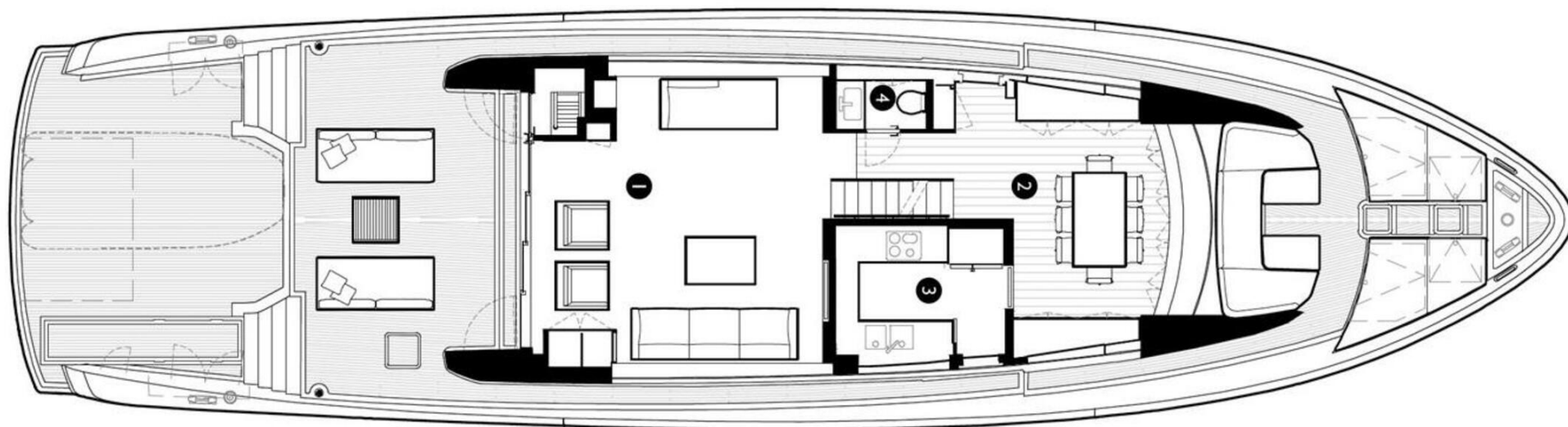
General Arrangement



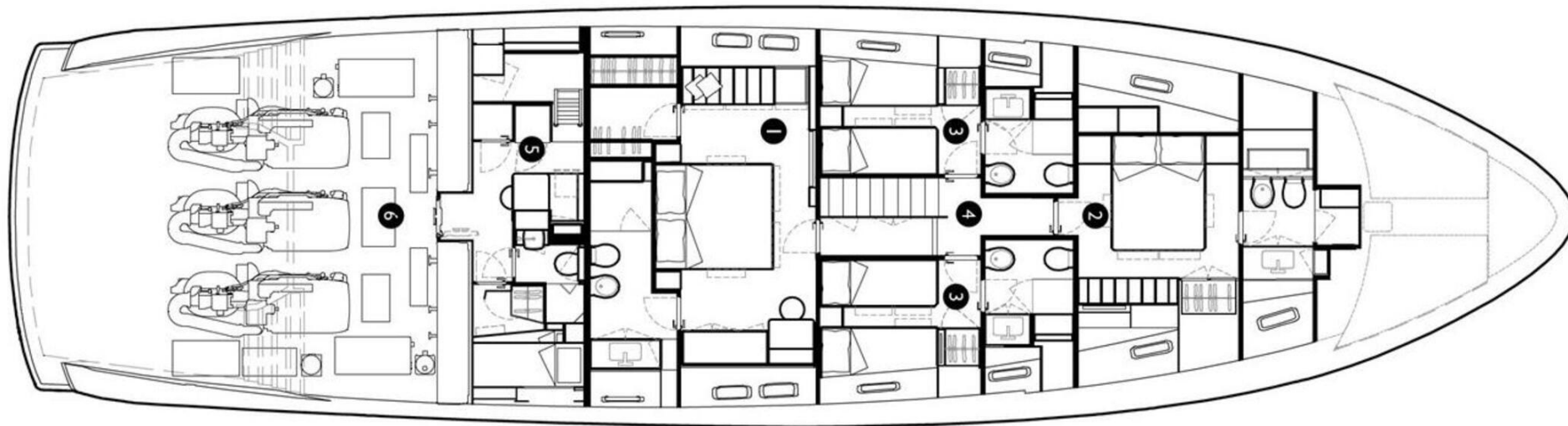
PROFILE



FLYBRIDGE



MAIN DECK



LOWER DECK



KIRILL KUATOV

+377 607 93 15 20

+39 333 576 44 44

 [Send e-mail](#)

 WhatsApp

 Telegram