



Brokerage

NAU
YACHTS

BRAVADO

MOTOR YACHT ABEKING & RASMUSSEN 44.9M 2004

€14,900,000 (VAT
paid)
FLAG - MALTA

MOTOR YACHT

BRAVADO



Built by **Abeking & Rasmussen** and delivered in 2004, **BRAVADO** is a 44.90-metre motor yacht of 499 GT, classed to Lloyd's and engineered for long-range cruising. Under the same ownership since 2015, she has undergone refits in 2016, 2021 and 2024, and has just completed her 20-year Lloyd's Special Survey. EU VAT is paid. Her layout accommodates up to 12 guests in six cabins. The upper deck features a full-beam owner's suite with a private gym and a 25 m² office. A VIP cabin is located on the main deck, while the lower deck houses four guest cabins - two double and two twin - each with an en-suite bathroom. Up to 11 crew are accommodated across five crew cabins. Ceiling heights of approximately 2.1 m provide excellent comfort on extended passages. Guest spaces include a main salon, a dedicated cinema room, a formal dining area on the main deck and a large 91 m² sundeck equipped with a Jacuzzi, bar, BBQ and service lift.

Twin MTU 16V2000 M60 engines (1,080 hp each) deliver a top speed of 14 knots and a cruising speed of 12 knots, while an economical 10-knot setting provides a range of approximately 3,500 nautical miles. Fuel capacity is 74,000 litres plus a 3,000-litre day tank. Quantum ARC3001 stabilisers with 2.7 m² fins ensure stability both underway and at anchor. The electrical system includes two MTU 6R 183 TE52 generators (160 kW each), an Atlas 120 kW shore-power converter and UPS.

BRAVADO is a technically modernised, fully certified and commercially compliant 45-metre superyacht with true transoceanic capability.

see more information about M/Y BRAVADO at www.nauyachts.com

SPECIFICATION

SHIPYARD, MODEL	Abeking & Rasmussen 45M
BUILT	2004
LENGTH	44.9 m
WATERLINE LENGTH	31.2 m
HULL CONFIGURATION	DISPLACEMENT
BEAM	8.7 m
RANGE	3500
DRAFT	2.9 m
GROSS TONNAGE	498 GT
YACHT CLASS	LLOYD'S
CABINS	6+5
MASTER CABIN	UPPER DECK
GUESTS	12
BERTHS	12+9
CREW	9
HEADS	7+5

EXTERIOR DESIGN	REYMOND LANGTON DESIGN
INTERIOR DESIGN	BIZZOZERO CASSINA
HULL	STEEL
SUPERSTRUCTURE	ALUMINIUM
ENGINES	2 x MTU 16V2000 M60 1080 h.p.
TYPE OF DRIVE	SHAFT LINE
ENGINE HOURS	N/A
MAXIMUM SPEED	14 kn
CRUSING SPEED	12 kn
FUEL CONSUMPTION AT ECONOMICAL SPEED	N/A
FUEL	74000 l
GREY WATER	4100 l
BLACK WATER	4000 l
FRESH WATER	17800 l
DISPLACEMENT	470

[see more information about M/Y BRAVADO at www.nauyachts.com](http://www.nauyachts.com)



EXTERIOR ABEKING & RASMUSSEN 45M 2004
MY BRAVADO

M/Y BRAVADO



EXTERIOR ABEKING & RASMUSSEN 45M 2004
MY BRAVADO

M/Y BRAVADO



EXTERIOR ABEKING & RASMUSSEN 45M 2004
MY BRAVADO

M/Y BRAVADO



EXTERIOR ABEKING & RASMUSSEN 45M 2004
MY BRAVADO

M/Y BRAVADO



EXTERIOR ABEKING & RASMUSSEN 45M 2004
MY BRAVADO

M/Y BRAVADO



EXTERIOR ABEKING & RASMUSSEN 45M 2004
MY BRAVADO

M/Y BRAVADO



EXTERIOR ABEKING & RASMUSSEN 45M 2004
MY BRAVADO

M/Y BRAVADO



AFT AREA

M/Y BRAVADO



SUNDECK LOUNGE AREA

M/Y BRAVADO



SUNDECK LOUNGE AREA

M/Y BRAVADO



SUNDECK LOUNGE AREA

M/Y BRAVADO



SUNDECK JACUZZI

M/Y BRAVADO



SUNDECK DINING AREA

M/Y BRAVADO



AFT UPPER DECK LOUNGE AREA

M/Y BRAVADO



BOW LOUNGE AREA

M/Y BRAVADO



AFT MAIN DECK LOUNGE AREA

M/Y BRAVADO



AFT MAIN DECK LOUNGE AREA

M/Y BRAVADO



UPPER DECK GYM

M/Y BRAVADO



UPPER DECK GYM

M/Y BRAVADO



MAIN HELM STATION

M/Y BRAVADO



MASTER CABIN

M/Y BRAVADO



MASTER CABIN

M/Y BRAVADO



MASTER BATHROOM

M/Y BRAVADO



MASTER BATHROOM

M/Y BRAVADO



MAIN SALON LOUNGE AREA

M/Y BRAVADO



MAIN SALON LOUNGE AREA

M/Y BRAVADO



MAIN SALON DINING AREA

M/Y BRAVADO



STAIRS FROM MD TO LD

M/Y BRAVADO



VIP CABIN

M/Y BRAVADO



VIP CABIN

M/Y BRAVADO



VIP BATHROOM

M/Y BRAVADO



VIP CABIN

M/Y BRAVADO



VIP BATHROOM

M/Y BRAVADO



VIP CABIN

M/Y BRAVADO



VIP BATHROOM

M/Y BRAVADO



GUEST CABIN

M/Y BRAVADO



GUEST BATHROOM

M/Y BRAVADO



GUEST CABIN

M/Y BRAVADO



GUEST BATHROOM

M/Y BRAVADO



GALLEY

M/Y BRAVADO



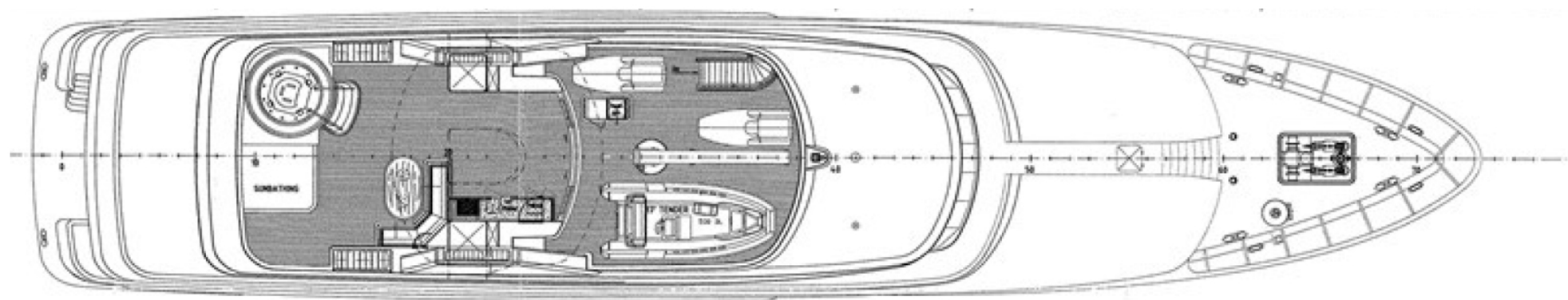
GALLEY

M/Y BRAVADO

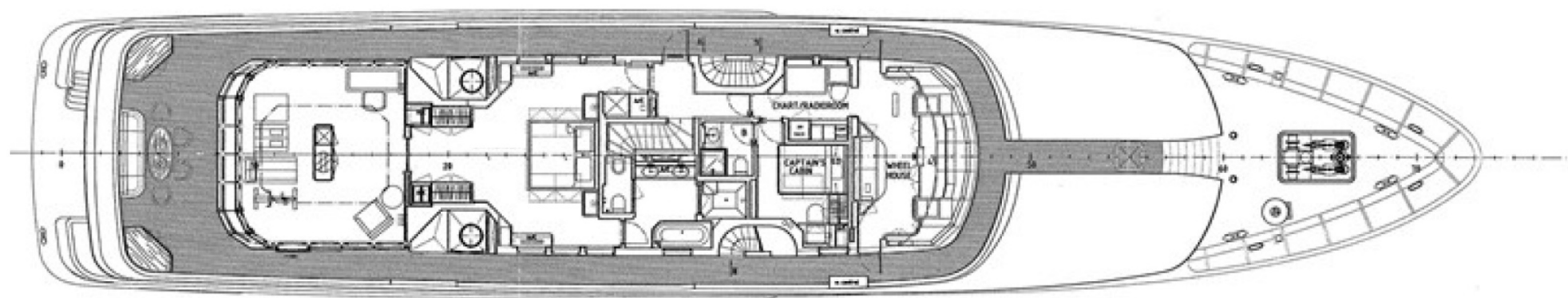
General Arrangement



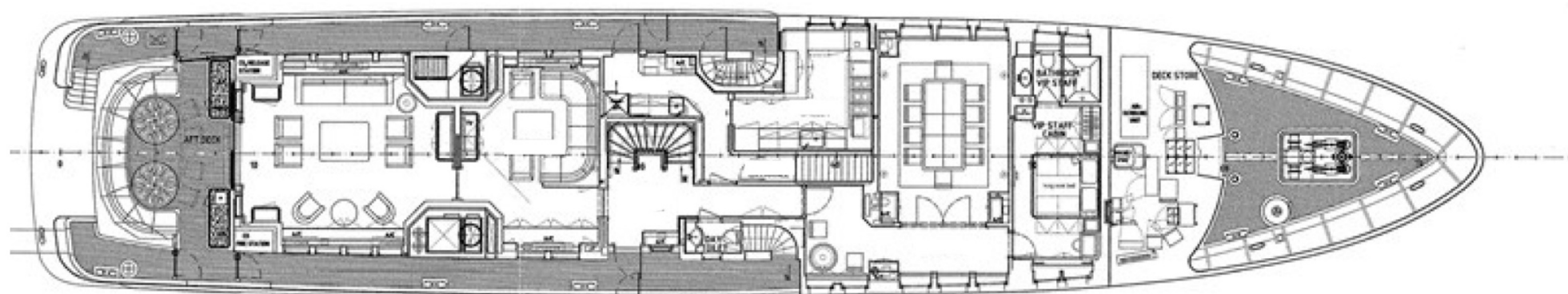
PROFILE



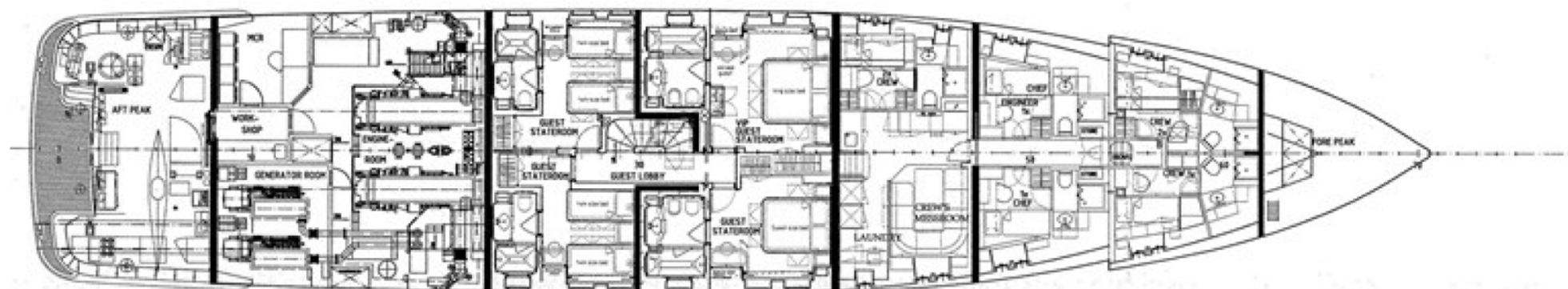
SUNDECK



UPPER DECK



MAIN DECK



LOWER DECK



KIRILL KUATOV

+377 607 93 15 20

+39 333 576 44 44

 [Send e-mail](#)

 WhatsApp

 Telegram

[More information about M/Y BRAVADO at www.nauyachts.com](#)

[Watch video](#)