



Brokerage

NAU
YACHTS

SAMIRA

MOTOR YACHT AMELS 55M 2003

€29,900,000 (VAT
paid)
FLAG - MARSHALL ISLANDS

MOTOR YACHT

SAMIRA



SAMIRA is a 55-metre **Amels** motor yacht designed by Terence Disdale and refreshed through an extensive 2024 refit. Launched in 2003 with a steel hull and aluminium superstructure, she now fully meets modern standards of comfort, safety, and commercial operation. Zero-speed and underway stabilisers ensure a high level of comfort in all conditions.

The interior is defined by clean lines and large windows that maintain a constant visual connection with the sea. The main salon is arranged as an open-plan space with a dining area for fourteen guests, while the upper deck hosts a sky lounge that serves as a more private retreat and cinema room. Accommodation is designed for up to twelve guests in five cabins, including a full-beam master suite on the main deck with an office and two walk-in wardrobes. Four guest cabins are located on the lower deck.

The exterior decks offer a wide selection of lounging and sunbathing areas, with the expansive sundeck serving as the primary daytime social hub. A fold-down transom provides convenient access to the water and expands the beach club area. For active enjoyment on the water, the yacht carries jet skis, Seabobs, SUP boards, a wakeboard and an inflatable pool, while a Castoldi tender ensures quick transfers to shore.

With upgraded technical systems, a thoughtful layout and generous interior volume, **SAMIRA** is a superyacht designed for comfortable long-term cruising and efficient charter operation.

see more information about M/Y SAMIRA at www.nauyachts.com

SPECIFICATION

SHIPYARD, MODEL	Amels 55M
BUILT	2003
LENGTH	55 m
WATERLINE LENGTH	48.5 m
HULL CONFIGURATION	DISPLACEMENT
BEAM	9.6 m
RANGE	4000
DRAFT	3.12 m
GROSS TONNAGE	802 GT
YACHT CLASS	LLOYD'S
CABINS	5+7
MASTER CABIN	MAIN DECK
GUESTS	12
BERTHS	12+13
CREW	13
HEADS	7+7

EXTERIOR DESIGN	TERENCE DISDALE DESIGN
INTERIOR DESIGN	TERENCE DISDALE DESIGN
HULL	STEEL
SUPERSTRUCTURE	ALUMINIUM
ENGINES	2 x Caterpillar 3512B DITA
TYPE OF DRIVE	SHAFT LINE
ENGINE HOURS	14532 h
MAXIMUM SPEED	16 kn
CRUISING SPEED	11 kn
FUEL CONSUMPTION AT ECONOMICAL SPEED	~ 350 l/h
FUEL	99600 l
GREY WATER	N/A
BLACK WATER	N/A
FRESH WATER	29100 l
DISPLACEMENT	710

[see more information about M/Y SAMIRA at www.nauyachts.com](http://www.nauyachts.com)



EXTERIOR AMELS 55M 2003 MY SAMIRA

M/Y SAMIRA



EXTERIOR AMELS 55M 2003 MY SAMIRA

M/Y SAMIRA



EXTERIOR AMELS 55M 2003 MY SAMIRA

M/Y SAMIRA



EXTERIOR AMELS 55M 2003 MY SAMIRA

M/Y SAMIRA



PORT SIDE

M/Y SAMIRA



SUNDECK LOUNGE AREA

M/Y SAMIRA



SUNDECK LOUNGE AREA

M/Y SAMIRA



AFT UPPER DECK DINING AREA

M/Y SAMIRA



AFT UPPER DECK DINING AREA

M/Y SAMIRA



AFT MAIN DECK LOUNGE AREA

M/Y SAMIRA



SWIMMING PLATFORM

M/Y SAMIRA



AFT AREA

M/Y SAMIRA



UPPER DECK SALOON

M/Y SAMIRA



UPPER DECK SALOON

M/Y SAMIRA



MAIN SALON LOUNGE AREA

M/Y SAMIRA



MAIN SALON DINING AREA

M/Y SAMIRA



MASTER CABIN

M/Y SAMIRA



MASTER BATHROOM

M/Y SAMIRA



VIP CABIN

M/Y SAMIRA



VIP BATHROOM

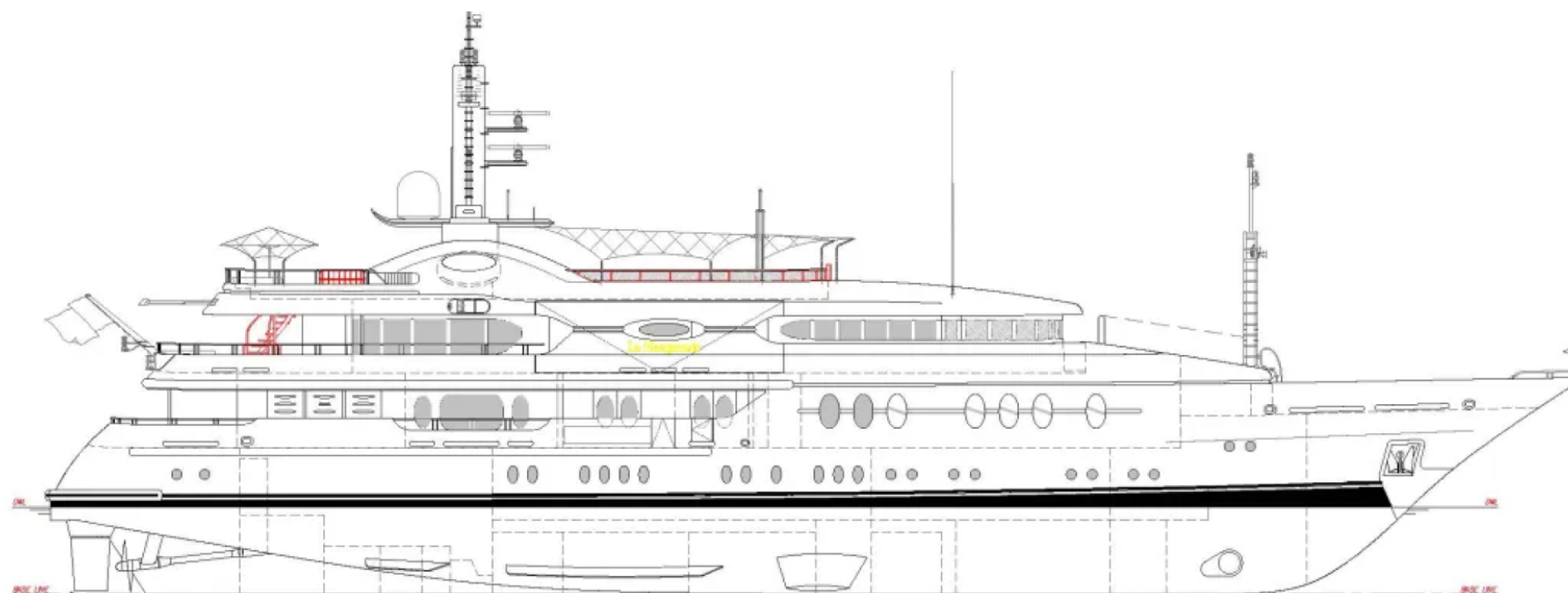
M/Y SAMIRA



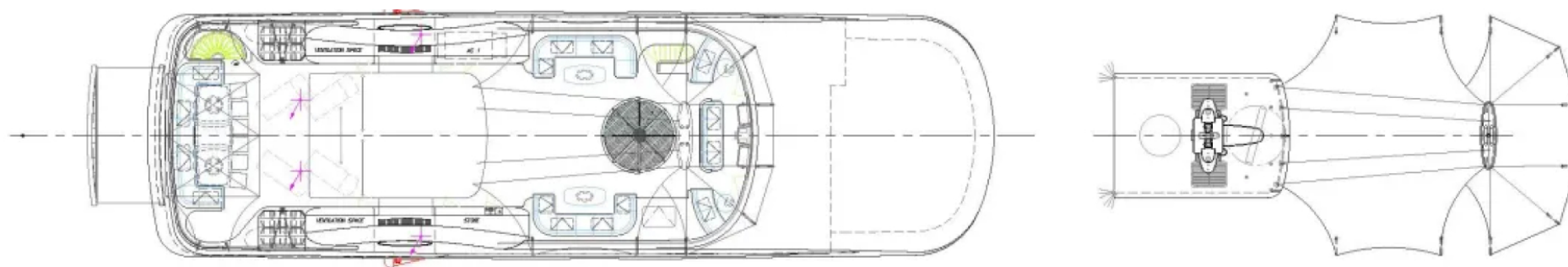
GUEST CABIN

M/Y SAMIRA

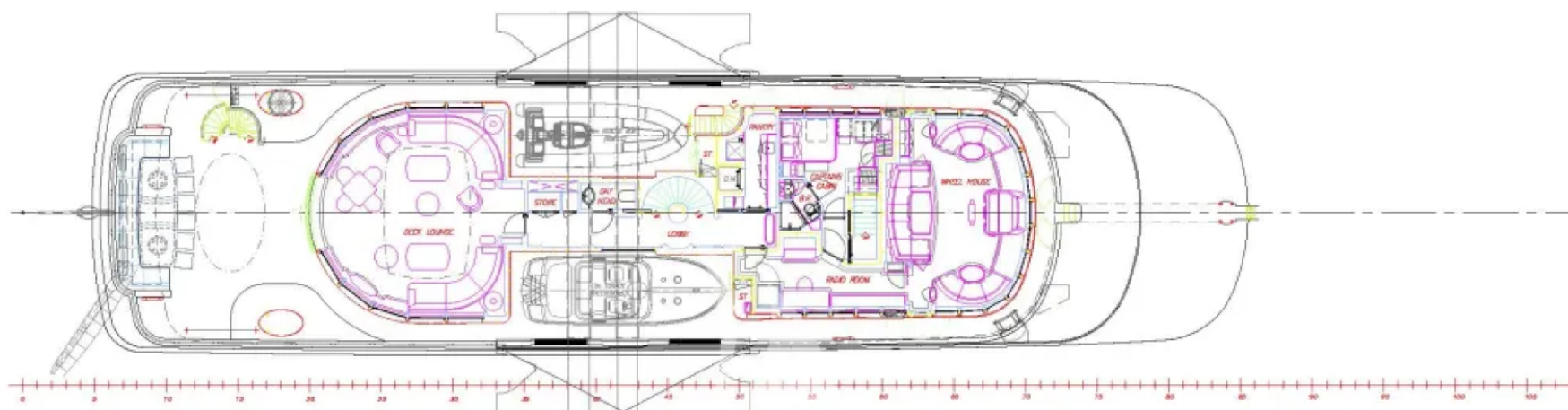
General Arrangement



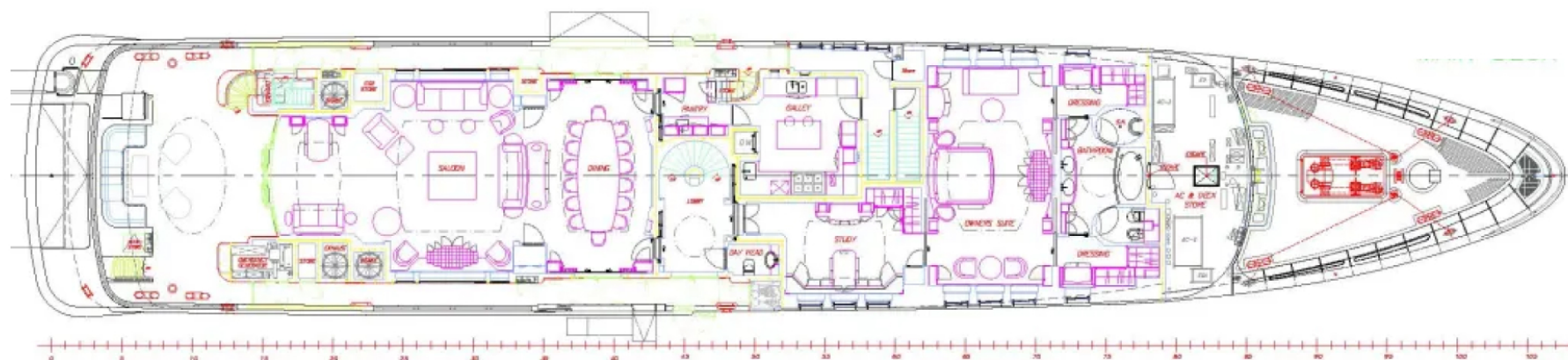
PROFILE



SUNDECK



UPPER DECK



MAIN DECK



KIRILL KUATOV

+377 607 93 15 20

+39 333 576 44 44

 [Send e-mail](#)

 WhatsApp

 Telegram

[More information about M/Y SAMIRA at www.nauyachts.com](http://www.nauyachts.com)

[Watch video](#)

[Watch 3d-tour](#)