



New Build

NAU  
YACHTS

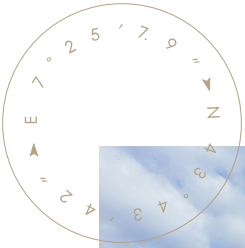
9X

MOTOR YACHT    PERSHING 28.09M    2028

FLAG -

MOTOR YACHT

9X



**Pershing 9X** is an **X Generation** motor yacht designed for owners who value high speed, precise handling, and advanced engineering without compromising comfort. In a maxi coupé format, it combines a distinctly sporty character with full-scale living volumes.

The hull and superstructure make extensive use of carbon fibre, reducing weight while increasing structural rigidity. Carefully engineered hull geometry and aerodynamics ensure stability, low noise levels, and confident performance at high speeds. Twin MTU 16V M96L engines, each producing 2,000 hp, deliver a top speed of up to 42 knots and a comfortable cruising speed of around 38 knots, while integrated control systems and surface drives provide exceptional manoeuvrability and responsiveness.

The layout accommodates four guest cabins and two crew cabins. Exterior spaces are designed for outdoor relaxation and socialising: the flybridge combines a lounge and sunbathing area, offering privacy, while wide side decks allow easy movement between levels. The cockpit features a dining area with direct access to the swim platform, reinforcing the yacht's seamless connection between performance and onboard living.

[see more information about M/Y 9X at www.nauyachts.com](http://www.nauyachts.com)

# SPECIFICATION

SHIPYARD, MODEL	Pershing 9X
DELIVERY AT THE SHIPYARD	2028
LENGTH	28.09 m
WATERLINE LENGTH	21.04 m
HULL CONFIGURATION	PLANING
BEAM	6.23 m
RANGE	380
DRAFT	1.65 m
GROSS TONNAGE	94 GT
YACHT CLASS	RINA
CABINS	4+2
MASTER CABIN	LOWER DECK
GUESTS	8
BERTHS	8+4
CREW	4
HEADS	4+2

EXTERIOR DESIGN	FULVIO DE SIMONI
INTERIOR DESIGN	PERSHING YACHTS
HULL	CARBON FIBRE
SUPERSTRUCTURE	CARBON FIBRE
ENGINES	2 x MTU 16V 2638 h.p.
TYPE OF DRIVE	SURFACE DRIVE
ENGINE HOURS	N/A
MAXIMUM SPEED	42 kn
CRUISING SPEED	38 kn
FUEL CONSUMPTION AT ECONOMICAL SPEED	N/A
FUEL	9000 l
GREY WATER	N/A
BLACK WATER	N/A
FRESH WATER	1200 l
DISPLACEMENT	83

[see more information about M/Y 9X at www.nauyachts.com](http://www.nauyachts.com)



EXTERIOR PERSHING 9X

M/Y 9X



AFT MAIN DECK DINING AREA

M/Y 9X



AFT MAIN DECK DINING AREA

M/Y 9X



STARBOARD

M/Y 9X



STARBOARD

M/Y 9X



BOW LOUNGE AREA

M/Y 9X



SECOND HELM STATION

M/Y 9X



FLYBRIDGE LOUNGE AREA

M/Y 9X



MAIN SALON LOUNGE AREA

M/Y 9X



MAIN SALON LOUNGE AREA

M/Y 9X



MAIN SALON LOUNGE AREA

M/Y 9X



MAIN SALON LOUNGE AREA

M/Y 9X



MAIN SALON LOUNGE AREA

M/Y 9X



MAIN SALON DINING AREA

M/Y 9X



MAIN HELM STATION

M/Y 9X



GALLEY

M/Y 9X



MASTER CABIN

M/Y 9X



MASTER CABIN

M/Y 9X



MASTER CABIN

M/Y 9X



MASTER CABIN

M/Y 9X



MASTER BATHROOM

M/Y 9X



VIP CABIN

M/Y 9X



VIP CABIN

M/Y 9X



VIP BATHROOM

M/Y 9X



GUEST CABIN

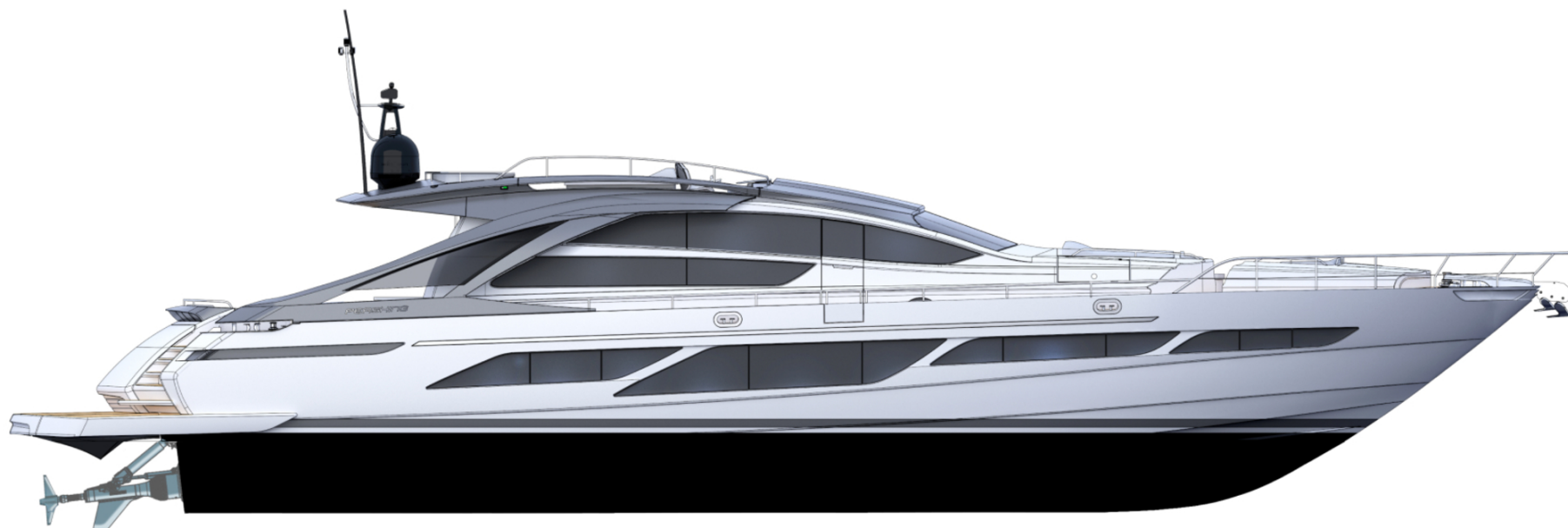
M/Y 9X



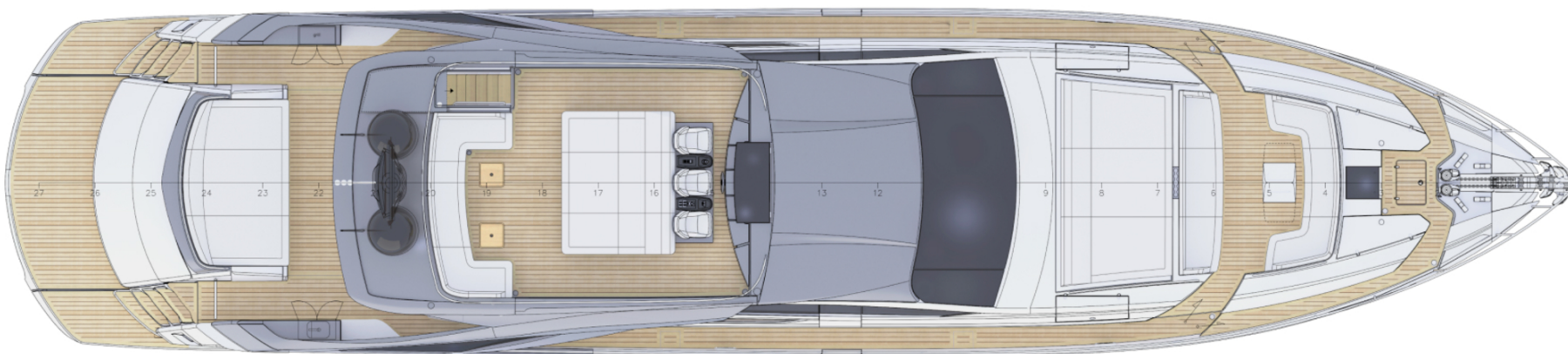
GUEST CABIN

M/Y 9X

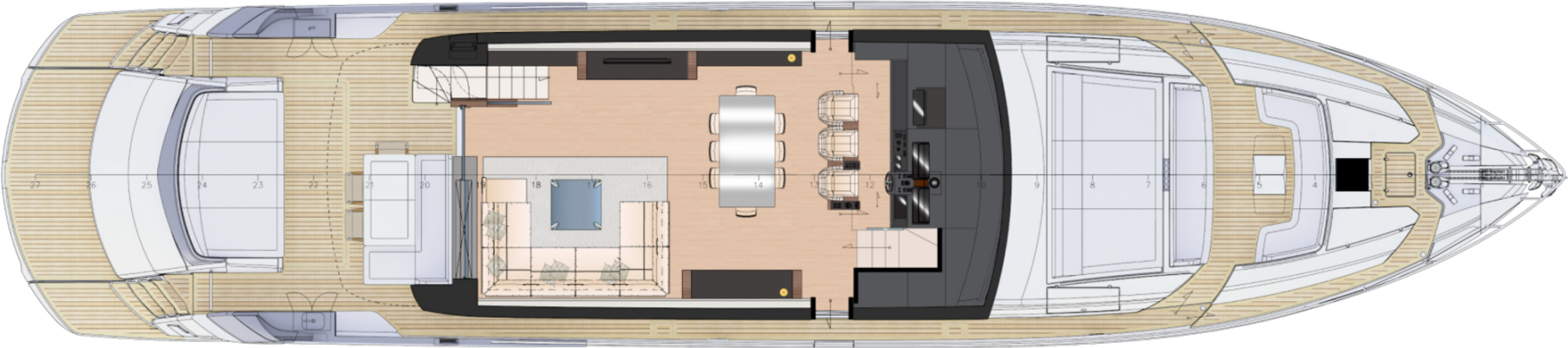
# General Arrangement



PROFILE



FLYBRIDGE



MAIN DECK



LOWER DECK



KIRILL KUATOV

+377 607 93 15 20

+39 333 576 44 44

 [Send e-mail](#)

 WhatsApp

 Telegram

[More information about M/Y 9X at www.nauyachts.com](#)

[Watch video](#)