



New Build

NAU
YACHTS

8X

MOTOR YACHT PERSHING 25.55M 2028

FLAG -

MOTOR YACHT

8X



Pershing 8X is a 25.55-metre high-performance motor yacht where lightweight construction directly enhances speed, agility and handling. Extensive use of carbon fibre in both the hull and superstructure significantly reduces displacement without compromising structural integrity or onboard comfort.

Twin MTU 16V M96 engines, each producing 2,000 hp, deliver a top speed of up to 45 knots and a confident cruising range of approximately 38 - 41 knots. The integrated helm station combines navigation and monitoring systems into a single, highly intuitive control environment.

The exterior of the **Pershing 8X** is instantly recognisable thanks to its aerodynamic profile and signature side "wings," which serve not only as a stylistic element but also as a functional feature, optimising airflow and deck layout. Redesigned access to the sport flybridge increases usable cockpit space and improves the overall flow and logic of the outdoor living areas.

The interior layout includes four guest cabins and two crew cabins, with well-considered storage solutions throughout. Spaces are designed for comfortable life on board without excessive ornamentation, underlining the model's functional, performance-driven character. A distinctive feature is the Music Hull audio system, which allows sound to be played underwater, adding a unique experiential element to time spent at anchor.

[see more information about M/Y 8X at www.nauyachts.com](http://www.nauyachts.com)

SPECIFICATION

SHIPYARD, MODEL	Pershing 8X
DELIVERY AT THE SHIPYARD	2028
LENGTH	25.55 m
WATERLINE LENGTH	19.6 m
HULL CONFIGURATION	DISPLACEMENT
BEAM	5.86 m
RANGE	310
DRAFT	1.4 m
GROSS TONNAGE	64 GT
YACHT CLASS	N/A
CABINS	4+2
MASTER CABIN	LOWER DECK
GUESTS	8
BERTHS	8+3
CREW	3
HEADS	3+1

EXTERIOR DESIGN	FULVIO DE SIMONI
INTERIOR DESIGN	FULVIO DE SIMONI
HULL	GRP
SUPERSTRUCTURE	GRP
ENGINES	2 x MTU 16V 2638 h.p.
TYPE OF DRIVE	SURFACE DRIVE
ENGINE HOURS	N/A
MAXIMUM SPEED	48 kn
CRUISING SPEED	41 kn
FUEL CONSUMPTION AT ECONOMICAL SPEED	N/A
FUEL	6200 l
GREY WATER	N/A
BLACK WATER	N/A
FRESH WATER	1300 l
DISPLACEMENT	67

[see more information about M/Y 8X at www.nauyachts.com](http://www.nauyachts.com)



EXTERIOR PERSHING 8X

M/Y 8X



EXTERIOR PERSHING 8X

M/Y 8X



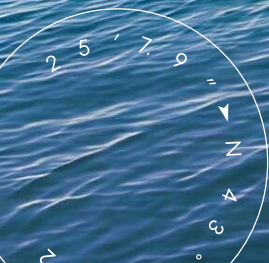
EXTERIOR PERSHING 8X

M/Y 8X



EXTERIOR PERSHING 8X

M/Y 8X



GARAGE

M/Y 8X



COCKPIT SEATING AREA

M/Y 8X



COCKPIT SEATING AREA

M/Y 8X



COCKPIT SEATING AREA

M/Y 8X



COCKPIT SEATING AREA

M/Y 8X



STARBOARD

M/Y 8X



BOW LOUNGE AREA

M/Y 8X



BOW LOUNGE AREA

M/Y 8X



BOW LOUNGE AREA

M/Y 8X



BOW LOUNGE AREA

M/Y 8X



FLYBRIDGE LOUNGE AREA

M/Y 8X



SECOND HELM STATION

M/Y 8X



ENTRANCE TO THE MAIN SALON

M/Y 8X



COCKPIT DINING AREA

M/Y 8X



MAIN SALON LOUNGE AREA

M/Y 8X



MAIN SALON DINING AREA

M/Y 8X



MAIN SALON LOUNGE AREA

M/Y 8X



MAIN HELM STATION

M/Y 8X



MAIN HELM STATION

M/Y 8X



MAIN HELM STATION

M/Y 8X



MAIN HELM STATION

M/Y 8X



MASTER CABIN

M/Y 8X



MASTER CABIN

M/Y 8X



MASTER CABIN

M/Y 8X



MASTER BATHROOM

M/Y 8X



VIP CABIN

M/Y 8X



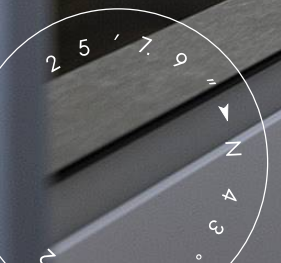
VIP BATHROOM

M/Y 8X



GUEST CABIN

M/Y 8X



GALLEY

M/Y 8X



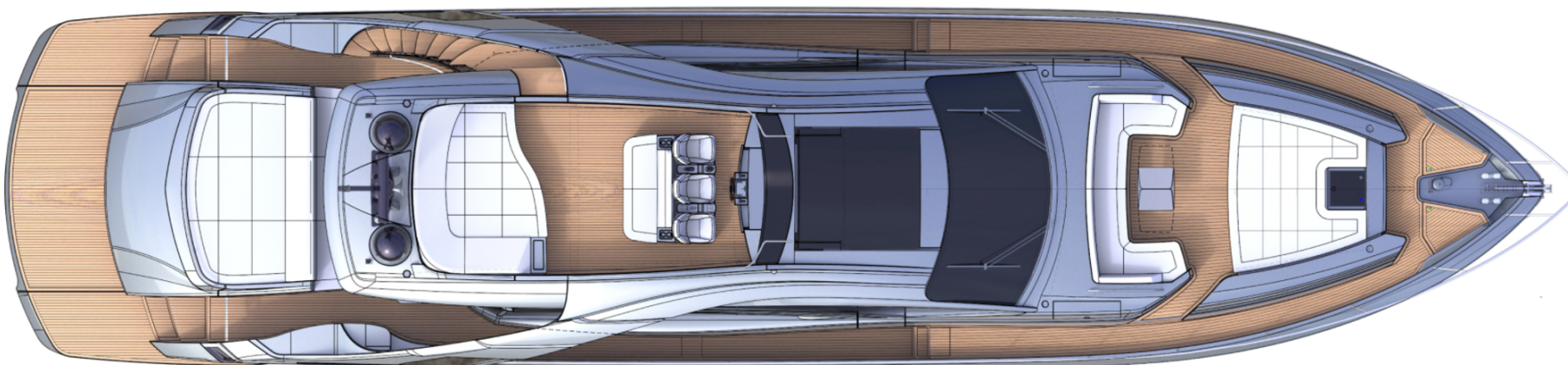
GALLEY

M/Y 8X

General Arrangement



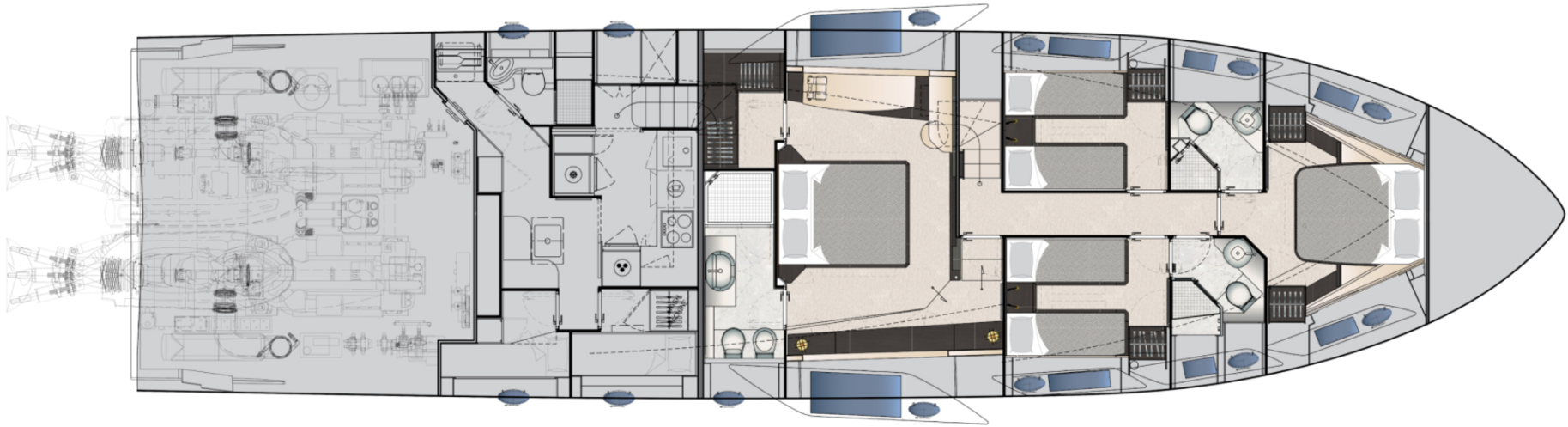
PROFILE



FLYBRIDGE



MAIN DECK



LOWER DECK



KIRILL KUATOV

+377 607 93 15 20

+39 333 576 44 44

 [Send e-mail](#)

 WhatsApp

 Telegram

[More information about M/Y 8X at www.nauyachts.com](#)

[Watch video](#)