



New Build

NAU
YACHTS

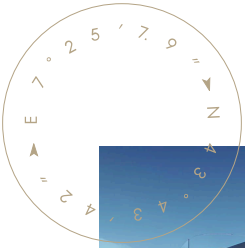
SEADECK 7

MOTOR YACHT AZIMUT 21.7M 2027

FLAG -

MOTOR YACHT

SEADECK 7



Azimut Seadeck 7 is part of **Azimut's** first hybrid yacht range, developed with a clear focus on family cruising, efficiency, and reduced environmental impact. The project is designed to cut annual CO₂ emissions by up to 40% in typical use, without sacrificing comfort or performance.

The architectural core of the yacht is the Fun Island concept - a water-level aft area that becomes the main social hub on board. The main deck is conceived as a single, open-plan living space, while fold-down terraces and a wide aft staircase provide direct, effortless access to the sea and significantly increase usable outdoor area. The exterior, designed by Alberto Mancini, emphasizes clean lines and functional elegance. Interiors by Matteo Thun & Antonio Rodriguez rely on natural materials and a calm, contemporary palette, with large windows that visually merge interior and exterior spaces and enhance the sense of openness.

With a length of 21.7 m and a beam of 5.48 m, the **Seadeck 7** accommodates up to eight guests in four cabins, plus a dedicated crew cabin. Powered by twin Volvo Penta IPS 1200 or IPS 1350 engines, the yacht reaches speeds of up to 31 knots, with a comfortable cruising speed of around 23 knots.

[see more information about M/Y SEADECK 7 at www.nauyachts.com](http://www.nauyachts.com)

SPECIFICATION

SHIPYARD, MODEL	Azimut Seadeck 7
DELIVERY AT THE SHIPYARD	2027
LENGTH	21.7 m
WATERLINE LENGTH	18.2 m
HULL CONFIGURATION	PLANING
BEAM	5.48 m
RANGE	374
DRAFT	1.54 m
GROSS TONNAGE	N/A
YACHT CLASS	CE CLASS A
CABINS	4+1
MASTER CABIN	LOWER DECK
GUESTS	8
BERTHS	8+2
CREW	2
HEADS	3+1

EXTERIOR DESIGN	ALBERTO MANCINI
INTERIOR DESIGN	MATTEO THUN & ANTONIO RODRIGUEZ
HULL	GRP
SUPERSTRUCTURE	CARBON FIBRE
ENGINES	2 x Volvo Penta IPS 1200 900 h.p.
TYPE OF DRIVE	HYBRID
ENGINE HOURS	N/A
MAXIMUM SPEED	31 kn
CRUISING SPEED	23 kn
FUEL CONSUMPTION AT ECONOMICAL SPEED	~ 108 l/h
FUEL	3700 l
GREY WATER	N/A
BLACK WATER	N/A
FRESH WATER	100 l
DISPLACEMENT	45.5

[see more information about M/Y SEADECK 7 at www.nauyachts.com](http://www.nauyachts.com)



EXTERIOR AZIMUT SEADECK 7

M/Y SEADECK 7



EXTERIOR AZIMUT SEADECK 7

M/Y SEADECK 7



EXTERIOR AZIMUT SEADECK 7

M/Y SEADECK 7



EXTERIOR AZIMUT SEADECK 7

M/Y SEADECK 7



EXTERIOR AZIMUT SEADECK 7

M/Y SEADECK 7



AFT MAIN DECK LOUNGE AREA

M/Y SEADECK 7



AFT MAIN DECK LOUNGE AREA

M/Y SEADECK 7



AFT MAIN DECK LOUNGE AREA

M/Y SEADECK 7



AFT MAIN DECK LOUNGE AREA

M/Y SEADECK 7



AFT MAIN DECK LOUNGE AREA

M/Y SEADECK 7



MAIN SALON LOUNGE AREA

M/Y SEADECK 7



MAIN SALON LOUNGE AREA

M/Y SEADECK 7



MAIN SALON LOUNGE AREA

M/Y SEADECK 7



MAIN SALON LOUNGE AREA

M/Y SEADECK 7



MASTER CABIN

M/Y SEADECK 7



MASTER CABIN

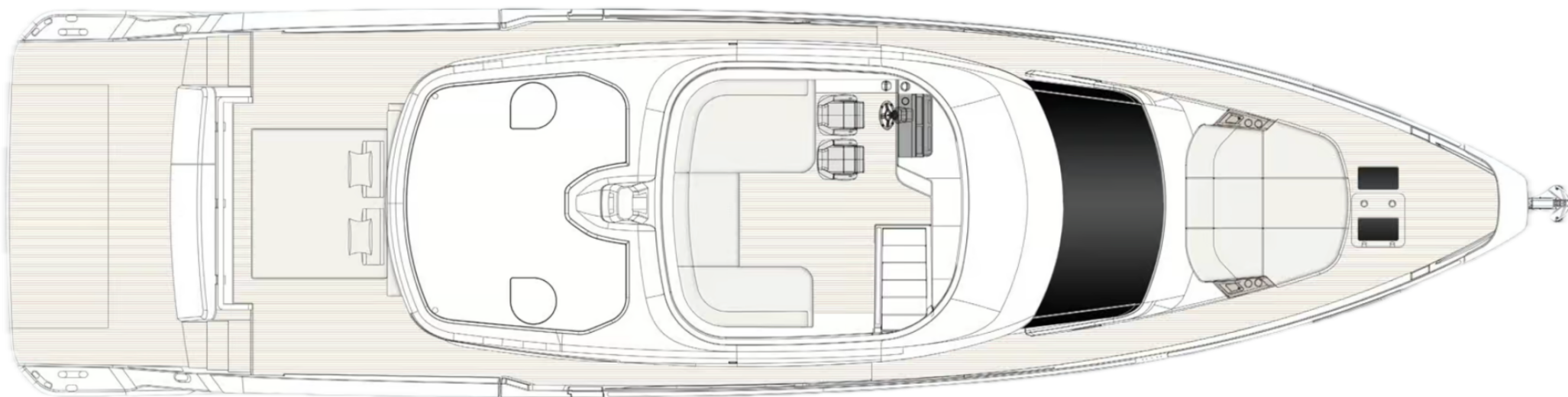
M/Y SEADECK 7



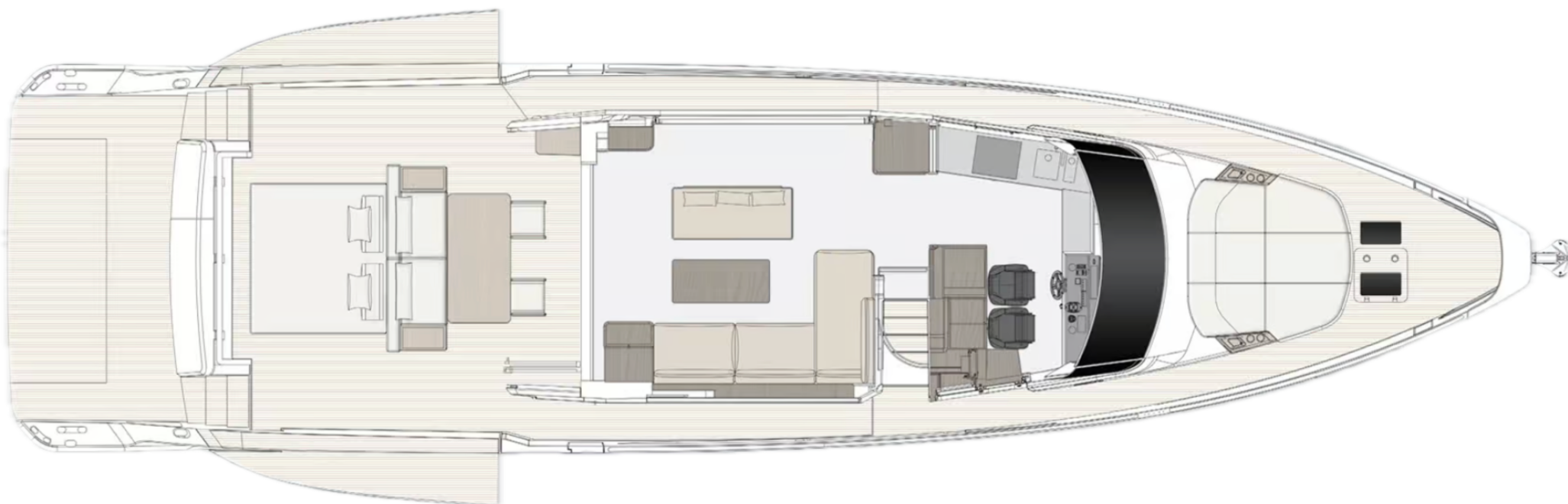
VIP CABIN

M/Y SEADECK 7

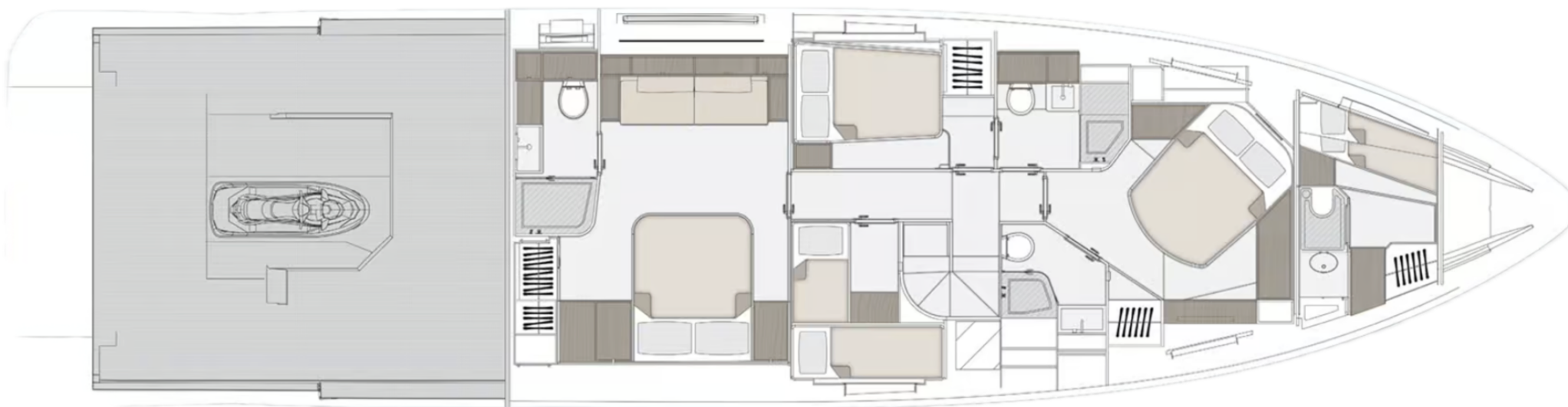
General Arrangement



FLYBRIDGE



MAIN DECK



LOWER DECK



KIRILL KUATOV

+377 607 93 15 20

+39 333 576 44 44

 [Send e-mail](#)

 WhatsApp

 Telegram

[More information about M/Y SEADECK 7 at www.nauyachts.com](#)

[Watch video](#)