



New Build

NAU  
YACHTS

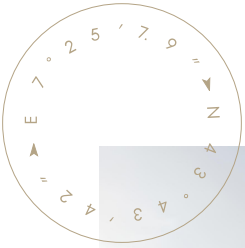
S7

MOTOR YACHT    AZIMUT 21.68M    2028

FLAG -

MOTOR YACHT

## S7



**Azimut S7** is a 21.68-metre sporty motor yacht designed with a clear focus on speed, efficiency and intelligent use of volume. The GRP hull with extensive carbon-fibre reinforcement, developed in collaboration between P.L. Ausonio and **Azimut's** engineering team, features reduced weight and a well-balanced architecture, enhancing both performance and onboard comfort.

Powered by three Volvo Penta D13 IPS 1050 engines rated at 800 hp each, the S7 reaches a top speed of up to 35 knots and cruises confidently at around 27 knots. The triple IPS configuration improves manoeuvrability and reduces noise levels, while also freeing up internal volume, making it possible to offer a rare four-cabin layout for a yacht of this size.

Accommodation is arranged for up to eight guests, including a master cabin with a walk-in wardrobe. The main deck is conceived as an open-plan living space, where the saloon and cockpit are visually and functionally connected. An optional sportfly adds an upper helm station and an additional outdoor relaxation area with a dining table, further enhancing the yacht's versatility.

[see more information about M/Y S7 at www.nauyachts.com](http://www.nauyachts.com)

# SPECIFICATION

SHIPYARD, MODEL	Azimut S7
DELIVERY AT THE SHIPYARD	2028
LENGTH	21.68 m
WATERLINE LENGTH	17.8 m
HULL CONFIGURATION	PLANING
BEAM	5.15 m
RANGE	387
DRAFT	1.69 m
GROSS TONNAGE	46 GT
YACHT CLASS	CE CLASS A
CABINS	4+1
MASTER CABIN	LOWER DECK
GUESTS	8
BERTHS	8+2
CREW	2
HEADS	3+1

EXTERIOR DESIGN	STEFANO RIGHINI
INTERIOR DESIGN	YACHTIQUE
HULL	GRP
SUPERSTRUCTURE	CARBON FIBRE
ENGINES	3 x Volvo Penta IPS 800 h.p.
TYPE OF DRIVE	VOLVO PENTA IPS
ENGINE HOURS	N/A
MAXIMUM SPEED	35 kn
CRUISING SPEED	27 kn
FUEL CONSUMPTION AT ECONOMICAL SPEED	~ 170 l/h
FUEL	3800 l
GREY WATER	N/A
BLACK WATER	N/A
FRESH WATER	1000 l
DISPLACEMENT	46

[see more information about M/Y S7 at www.nauyachts.com](http://www.nauyachts.com)





EXTERIOR AZIMUT S7

M/Y S7





EXTERIOR AZIMUT S7

M/Y S7





EXTERIOR AZIMUT S7

M/Y S7





EXTERIOR AZIMUT S7

M/Y S7





EXTERIOR AZIMUT S7

M/Y S7





COCKPIT DINING AREA

M/Y S7





COCKPIT DINING AREA

M/Y S7





BOW LOUNGE AREA

M/Y S7





FLYBRIDGE LOUNGE AREA

M/Y S7





FLYBRIDGE DINING AREA

M/Y S7





SECOND HELM STATION

M/Y S7





MAIN SALON

M/Y S7





MAIN SALON

M/Y S7





MAIN SALON

M/Y S7





MAIN SALON

M/Y S7





MAIN HELM STATION

M/Y S7





GALLEY

M/Y S7





MASTER CABIN

M/Y S7





MASTER CABIN

M/Y S7





MASTER CABIN

M/Y S7





MASTER BATHROOM

M/Y S7





VIP CABIN

M/Y S7





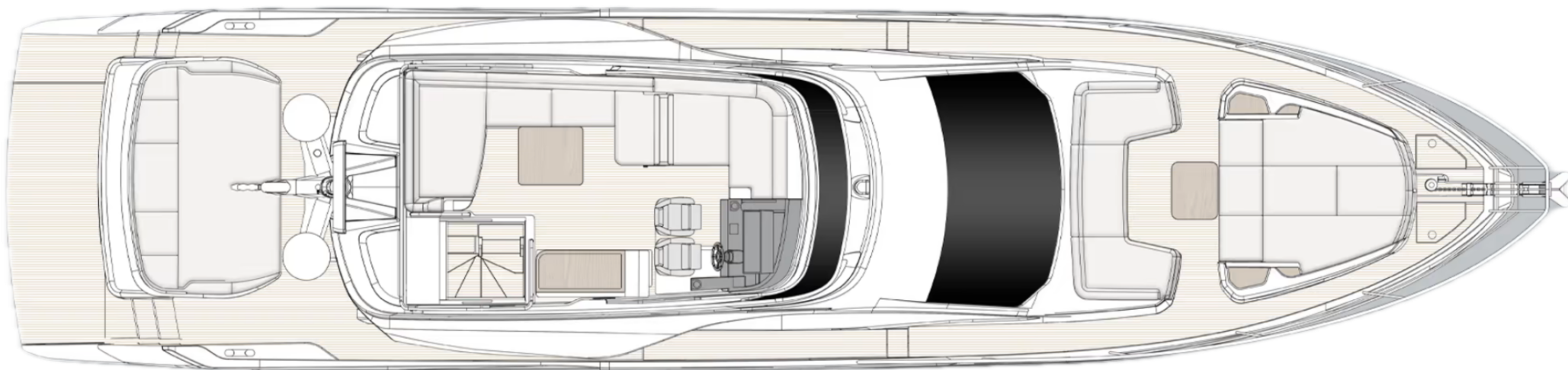
VIP CABIN

M/Y S7



# General Arrangement



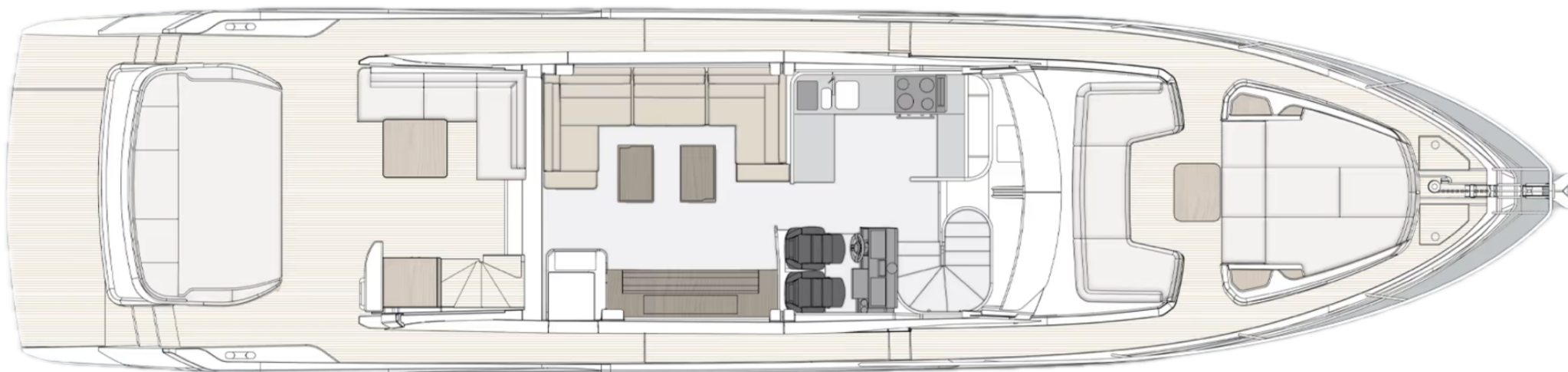


---

---

FLYBRIDGE



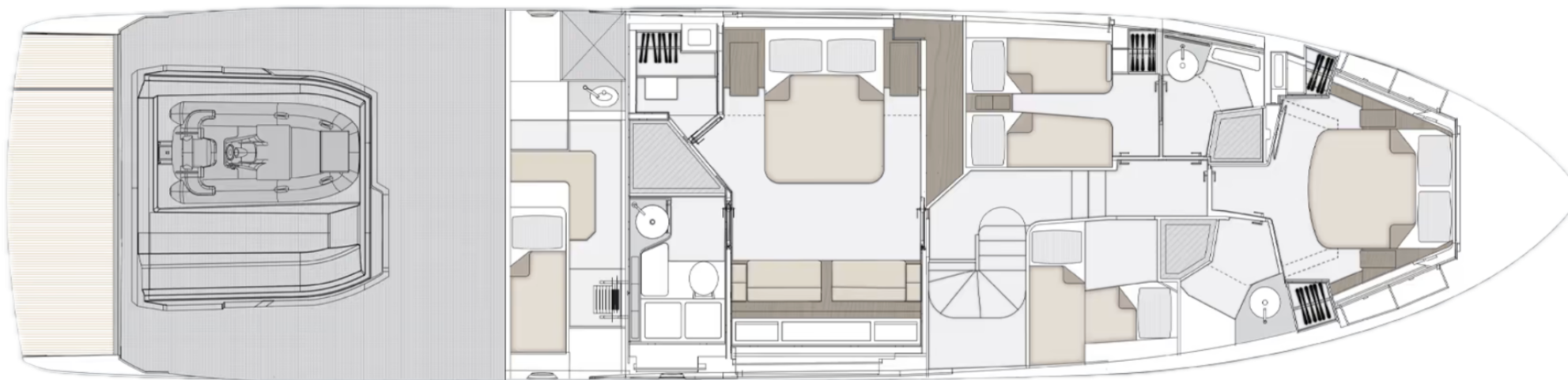


---

---

MAIN DECK





---

---

LOWER DECK





KIRILL KUATOV

+377 607 93 15 20

+39 333 576 44 44

 [Send e-mail](#)

 WhatsApp

 Telegram

[More information about M/Y S7 at www.nauyachts.com](#)

[Watch video](#)