



New Build

NAU
YACHTS

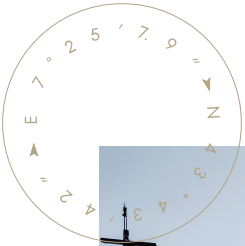
S8

MOTOR YACHT AZIMUT 24.63M 2028

FLAG -

MOTOR YACHT

S8



Azimut S8 is a 24.6-metre high-performance sport yacht that combines speed, advanced technology and intelligently planned living spaces. The hull and superstructure are built in GRP with extensive use of carbon fibre, reducing overall weight and improving efficiency. Naval architecture was developed by P.L. Ausonio, the exterior design by Alberto Mancini, and the interior by Yachtique. Three Volvo Penta IPS 1350 engines, each delivering 1,000 hp, provide a top speed of up to 34 knots and a comfortable cruising speed of around 28 knots. The planing deep-V hull ensures stability, precise handling and low noise levels. The compact IPS propulsion layout frees up internal volume, allowing for a highly efficient use of space throughout the yacht.

Accommodation is arranged for up to eight guests in four cabins, including a full-beam master suite. All cabins are en suite, while the two-person crew is housed in separate quarters aft. The main deck is designed as an open-plan living area with a seamless transition between the saloon and cockpit, enhanced by large windows and sliding doors that maintain a constant visual connection with the sea. The galley is positioned on a split level, keeping the main guest areas uncluttered and spacious. Outdoor spaces include a foredeck sunbathing area, an aft cockpit lounge, and a multifunctional garage designed to accommodate both a tender and a jet ski. CE Category A certification confirms the yacht's suitability for open-sea cruising.

Azimut S8 is a refined yet powerful sports yacht, offering a balanced blend of performance, comfort and contemporary Italian design.

[see more information about M/Y S8 at www.nauyachts.com](http://www.nauyachts.com)

SPECIFICATION

SHIPYARD, MODEL	Azimut S8
DELIVERY AT THE SHIPYARD	2028
LENGTH	24.63 m
WATERLINE LENGTH	21.25 m
HULL CONFIGURATION	PLANING
BEAM	5.55 m
RANGE	315
DRAFT	1.75 m
GROSS TONNAGE	90 GT
YACHT CLASS	CE CLASS A
CABINS	4+2
MASTER CABIN	LOWER DECK
GUESTS	8
BERTHS	8+2
CREW	2
HEADS	4+1

EXTERIOR DESIGN	ALBERTO MANCINI
INTERIOR DESIGN	YACHTIQUE
HULL	GRP
SUPERSTRUCTURE	CARBON FIBRE
ENGINES	3 x Volvo Penta IPS 1000 h.p.
TYPE OF DRIVE	VOLVO PENTA IPS
ENGINE HOURS	N/A
MAXIMUM SPEED	34 kn
CRUISING SPEED	28 kn
FUEL CONSUMPTION AT ECONOMICAL SPEED	~ 480 l/h
FUEL	4000 l
GREY WATER	N/A
BLACK WATER	N/A
FRESH WATER	1100 l
DISPLACEMENT	57.7

[see more information about M/Y S8 at www.nauyachts.com](http://www.nauyachts.com)



EXTERIOR AZIMUT S8

M/Y S8



EXTERIOR AZIMUT S8

M/Y S8



EXTERIOR AZIMUT S8

M/Y S8



FLYBRIDGE

M/Y S8



FLYBRIDGE

M/Y S8



SECOND HELM STATION

M/Y S8



BOW LOUNGE AREA

M/Y S8



BOW LOUNGE AREA

M/Y S8



BOW LOUNGE AREA

M/Y S8



SWIMMING PLATFORM

M/Y S8



COCKPIT SEATING AREA

M/Y S8



COCKPIT DINING AREA

M/Y S8



COCKPIT SEATING AREA

M/Y S8



MAIN SALON

M/Y S8



MAIN SALON

M/Y S8



MAIN SALON

M/Y S8



MAIN SALON

M/Y S8



MAIN HELM STATION

M/Y S8



MASTER CABIN

M/Y S8



MASTER CABIN

M/Y S8



MASTER CABIN

M/Y S8



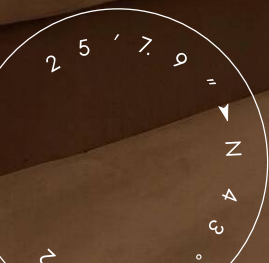
MASTER BATHROOM

M/Y S8



VIP CABIN

M/Y S8



VIP CABIN

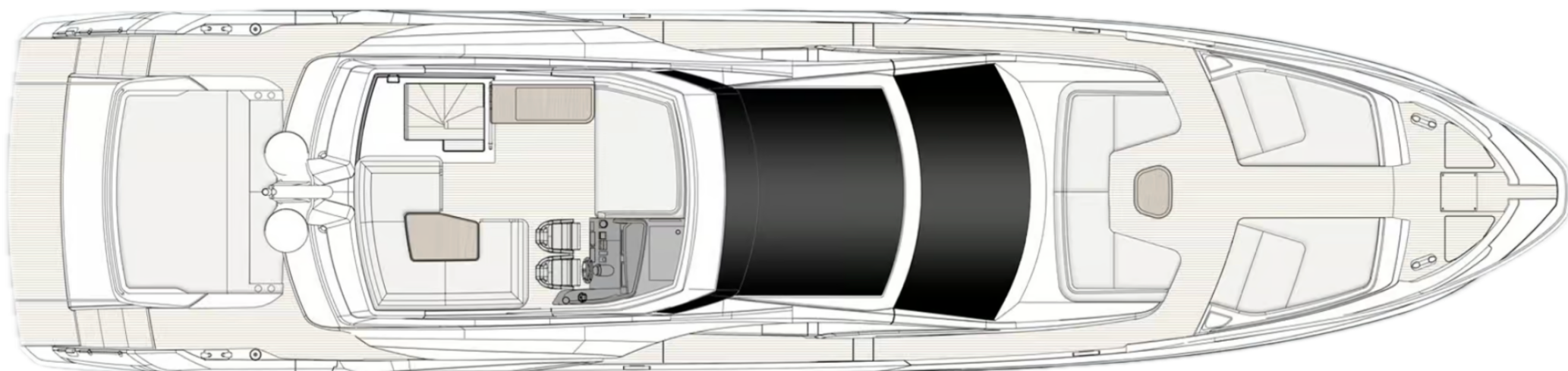
M/Y S8



GUEST CABIN

M/Y S8

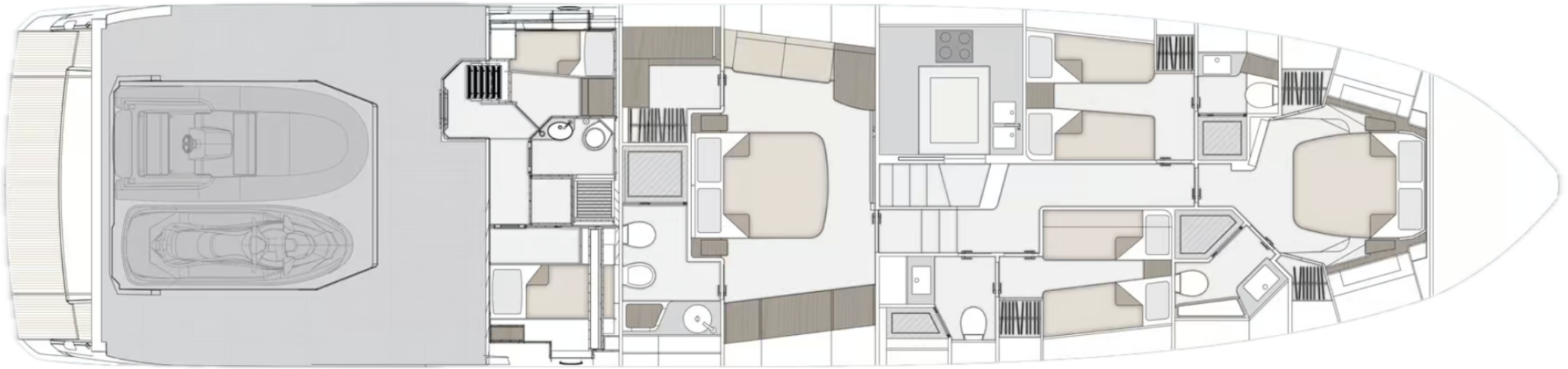
General Arrangement



FLYBRIDGE



MAIN DECK




LOWER DECK



KIRILL KUATOV

+377 607 93 15 20

+39 333 576 44 44

 [Send e-mail](#)

 WhatsApp

 Telegram

[More information about M/Y S8 at www.nauyachts.com](#)

[Watch video](#)