



New Build

NAU  
YACHTS

F106

MOTOR YACHT AMER 31.2M 2026

FLAG -

MOTOR YACHT

## F106



**Amer F106** is a new project by **Amer Yachts**, currently under construction with delivery scheduled for 2026. With a beam of approximately 7 metres, the yacht offers generous interior volume for her size. The main deck features a full-beam saloon with panoramic glazing, a full-beam owner's suite, and a port-side galley. The lower deck accommodates four guest cabins along with dedicated crew areas, allowing for up to 10 guests in five cabins overall.

The exterior layout is designed around life close to the water. The aft lounge flows seamlessly into the cockpit, from which twin staircases lead up to the flybridge, measuring approximately 10 metres in length. This space hosts the helm station, a dining area, and multiple lounging and sunbathing zones, both aft and forward of the helm. A large foredeck sunbathing area further expands the outdoor living options. The tender is stored in an aft garage, keeping decks clear and functional.

**Amer F106** is powered by Volvo Penta IPS propulsion, with configuration options including quad IPS 1350 units or IPS 40 drives, depending on specification. This setup delivers a cruising speed of around 24 knots and a top speed of up to 28 knots, while ensuring excellent manoeuvrability, reduced vibration levels, and optimised fuel efficiency.

Overall, the **Amer F106** presents a balanced combination of modern design, spacious layout, and advanced propulsion, positioned as a comfortable and efficient yacht for both private cruising and extended stays on board.

[see more information about M/Y F106 at www.nauyachts.com](http://www.nauyachts.com)

# SPECIFICATION

SHIPYARD, MODEL	Amer F106
BUILT	2026
LENGTH	31.2 m
WATERLINE LENGTH	N/A
HULL CONFIGURATION	PLANING
BEAM	7 m
RANGE	2700
DRAFT	1.95 m
GROSS TONNAGE	90 GT
YACHT CLASS	CE CLASS A
CABINS	5+2
MASTER CABIN	MAIN DECK
GUESTS	10
BERTHS	10+2
CREW	4
HEADS	5+2

EXTERIOR DESIGN	ANTONIO LUXARDO
INTERIOR DESIGN	AMER YACHTS
HULL	GRP
SUPERSTRUCTURE	ALUMINIUM
ENGINES	4 x Volvo Penta IPS 1330 h.p.
TYPE OF DRIVE	VOLVO PENTA IPS
ENGINE HOURS	N/A
MAXIMUM SPEED	28 kn
CRUISING SPEED	24 kn
FUEL CONSUMPTION AT ECONOMICAL SPEED	N/A
FUEL	9200 l
GREY WATER	N/A
BLACK WATER	N/A
FRESH WATER	2000 l
DISPLACEMENT	N/A

[see more information about M/Y F106 at www.nauyachts.com](http://www.nauyachts.com)





EXTERIOR AMER F106

M/Y F106





EXTERIOR AMER F106

M/Y F106





EXTERIOR AMER F106

M/Y F106





AFT AREA

M/Y F106





FLYBRIDGE LOUNGE AREA

M/Y F106





MAIN SALON LOUNGE AREA

M/Y F106





MAIN SALON LOUNGE AREA

M/Y F106





MAIN SALON LOUNGE AREA

M/Y F106





MAIN SALON LOUNGE AREA

M/Y F106





MAIN SALON LOUNGE AREA

M/Y F106





MAIN SALON DINING AREA

M/Y F106





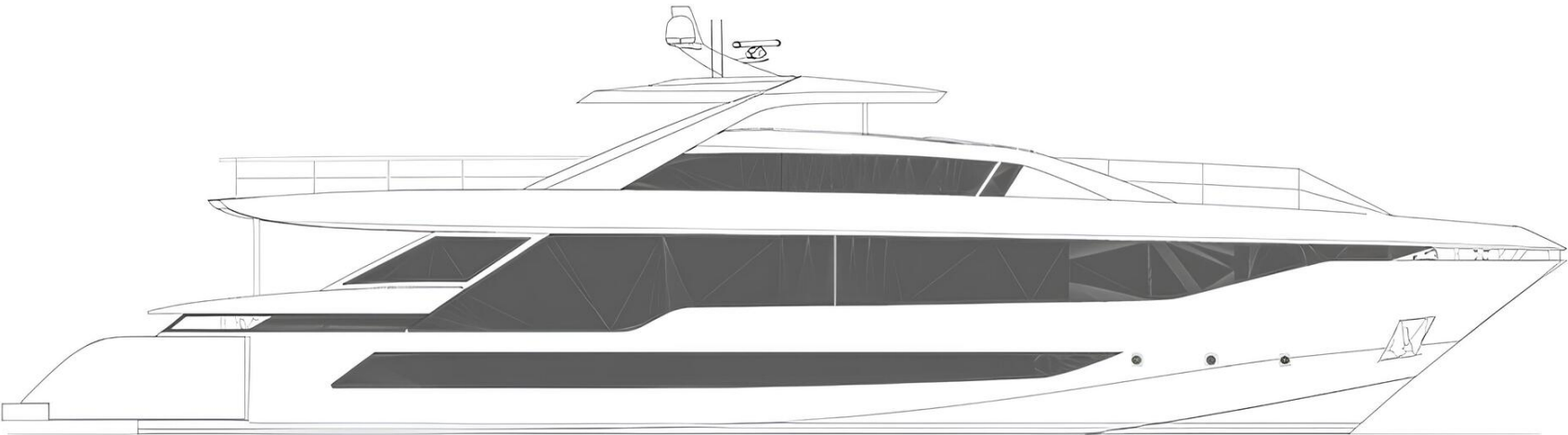
MAIN SALON LOUNGE AREA

M/Y F106



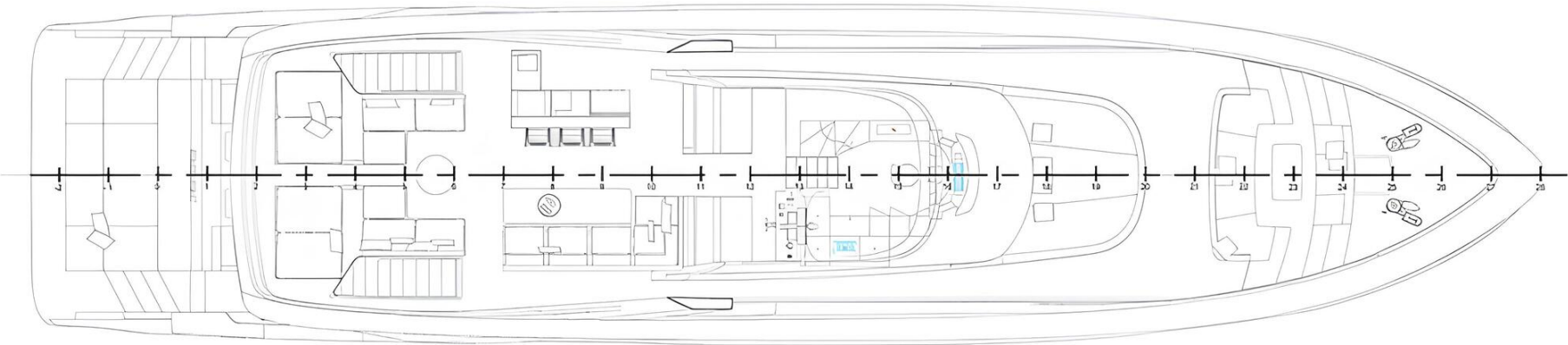
# General Arrangement





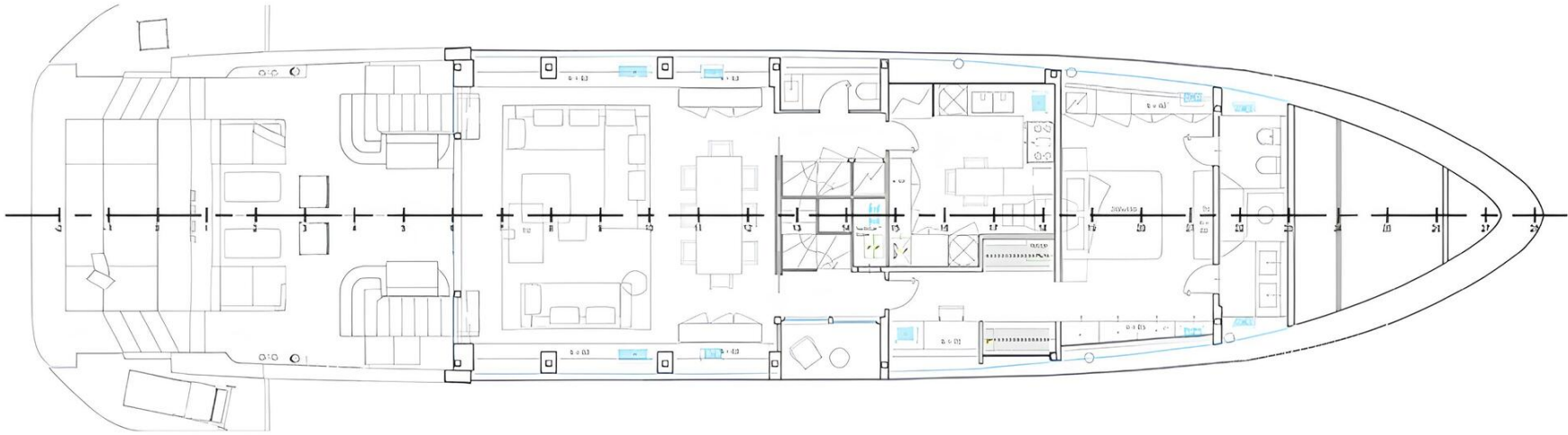
PROFILE





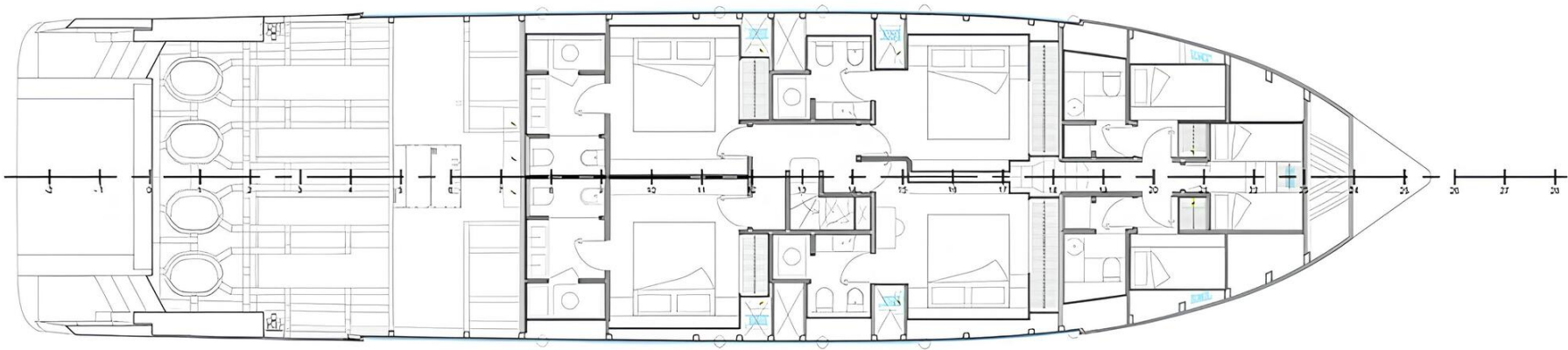
FLYBRIDGE





MAIN DECK






LOWER DECK



KIRILL KUATOV

+377 607 93 15 20

+39 333 576 44 44

 [Send e-mail](#)

 WhatsApp

 Telegram