



Brokerage

NAU  
YACHTS

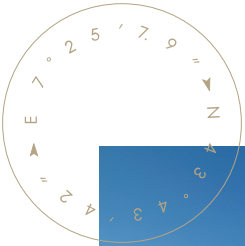
INVADER

MOTOR YACHT CODECASA 49.9M 1999

FLAG - GREECE

MOTOR YACHT

# INVADER



**INVADER** is a 49.9-metre motor yacht built by **Codecasa** in 1999 and extensively refitted in 2019, including a complete renewal of the interiors and main social areas. She features a steel hull, aluminium superstructure, and teak decks. The exterior was designed by Della Role Design, while the interiors were created by Vafiadis Studio, focusing on functionality and logical spatial organization.

Following the refit, the main salon was fully redesigned with clearly defined lounge and dining areas. The interior combines lacquered wood, light fabrics, and marble and onyx accents, primarily in common areas and bathrooms. The layout is suitable for both private ownership and charter operations.

**INVADER** accommodates up to 10 guests in five cabins. The full-beam master suite is located on the main deck and includes a private office, dual dressing rooms, and a spacious bathroom with separate bath and shower. The lower deck houses four guest cabins, all with en-suite facilities. Crew accommodation consists of seven cabins for up to 12 crew members. A lift provides access to all decks for added convenience.

The upper deck features a sky lounge with a sofa area, bar, home cinema, and workspace, along with a covered aft dining area. Forward on the same deck is the helm station with wrap-around seating. Zero-speed stabilizers enhance comfort at anchor.

The sundeck is equipped with a jacuzzi, sunbathing areas, a bar, and sun canopies. The yacht's mast includes an observation platform accessible via ladder, with integrated lift access.

**INVADER** combines classic **Codecasa** build quality with a thoughtfully refitted interior, offering a perfect balance of luxury, functionality, and comfort for long-range cruising or charter.

[see more information about M/Y INVADER at www.nauyachts.com](http://www.nauyachts.com)

# SPECIFICATION

SHIPYARD, MODEL	Codecasa 50M
BUILT	1999
LENGTH	49.9 m
WATERLINE LENGTH	43 m
HULL CONFIGURATION	DISPLACEMENT
BEAM	9.4 m
RANGE	5500
DRAFT	3.1 m
GROSS TONNAGE	608 GT
YACHT CLASS	INSB
CABINS	5+7
MASTER CABIN	MAIN DECK
GUESTS	10
BERTHS	10+12
CREW	12
HEADS	7+7

EXTERIOR DESIGN	DELLA ROLE DESIGN
INTERIOR DESIGN	STUDIO VAFIADIS
HULL	STEEL
SUPERSTRUCTURE	ALUMINIUM
ENGINES	2 x Caterpillar 3516B 2200 h.p.
TYPE OF DRIVE	SHAFT LINE
ENGINE HOURS	N/A
MAXIMUM SPEED	16 kn
CRUSING SPEED	13.5 kn
FUEL CONSUMPTION AT ECONOMICAL SPEED	~ 550 l/h
FUEL	120000 l
GREY WATER	N/A
BLACK WATER	N/A
FRESH WATER	19000 l
DISPLACEMENT	480

[see more information about M/Y INVADER at www.nauyachts.com](http://www.nauyachts.com)





EXTERIOR CODECASA 50M 1999 MY INVADER

M/Y INVADER





EXTERIOR CODECASA 50M 1999 MY INVADER

M/Y INVADER





AFT MAIN DECK DINING AREA

M/Y INVADER





AFT UPPER DECK DINING AREA

M/Y INVADER





UPPER DECK JACUZZI

M/Y INVADER





SUNDECK LOUNGE AREA

M/Y INVADER





SUNDECK LOUNGE AREA

M/Y INVADER





SUNDECK LOUNGE AREA

M/Y INVADER





SUNDECK LOUNGE AREA

M/Y INVADER





UPPER DECK SALOON

M/Y INVADER





UPPER DECK SALOON

M/Y INVADER





UPPER DECK SALOON

M/Y INVADER





MAIN SALON LOUNGE AREA

M/Y INVADER





MAIN SALON LOUNGE AREA

M/Y INVADER





MAIN SALON LOUNGE AREA

M/Y INVADER





MAIN SALON DINING AREA

M/Y INVADER





OFFICE IN THE MASTER CABIN

M/Y INVADER





MASTER CABIN

M/Y INVADER





MASTER CABIN

M/Y INVADER





MASTER BATHROOM

M/Y INVADER





MASTER BATHROOM

M/Y INVADER





VIP CABIN

M/Y INVADER





VIP CABIN

M/Y INVADER





VIP BATHROOM

M/Y INVADER





GUEST CABIN

M/Y INVADER





MAIN HELM STATION

M/Y INVADER





GALLEY

M/Y INVADER





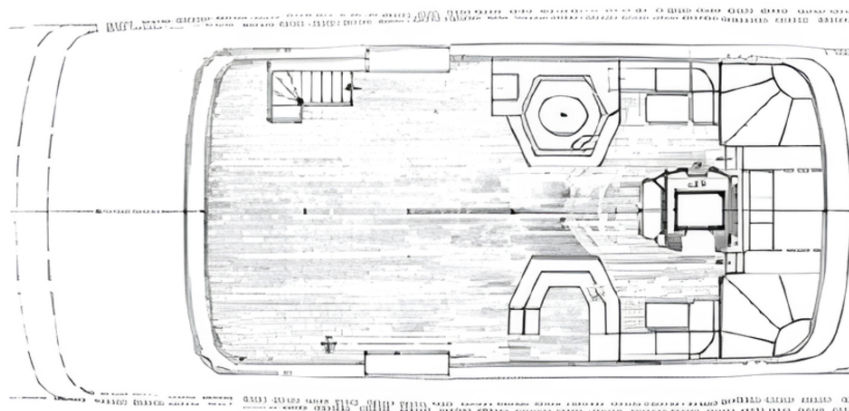
GARAGE

M/Y INVADER



# General Arrangement





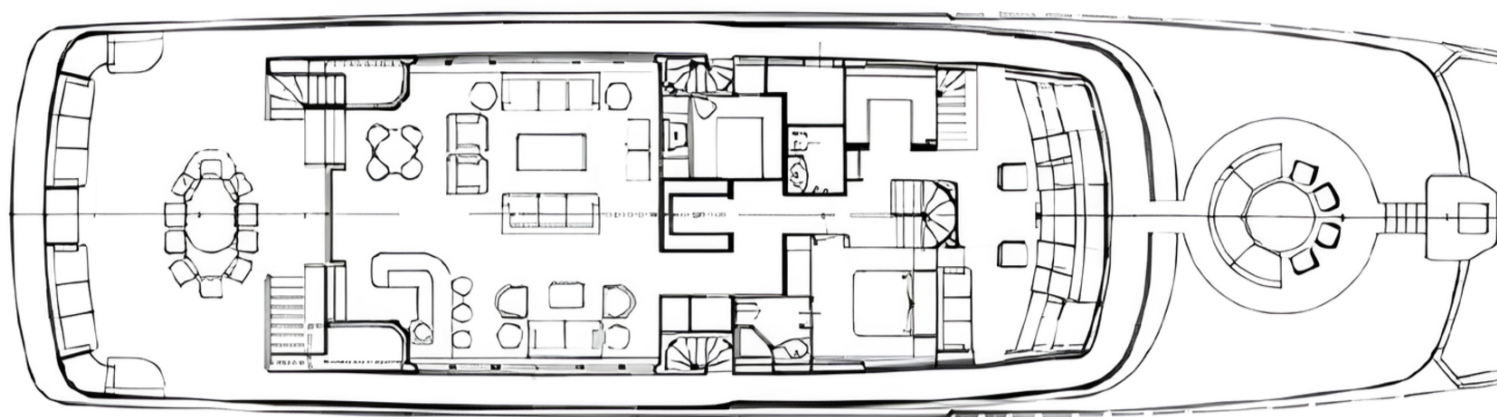
---

---

---

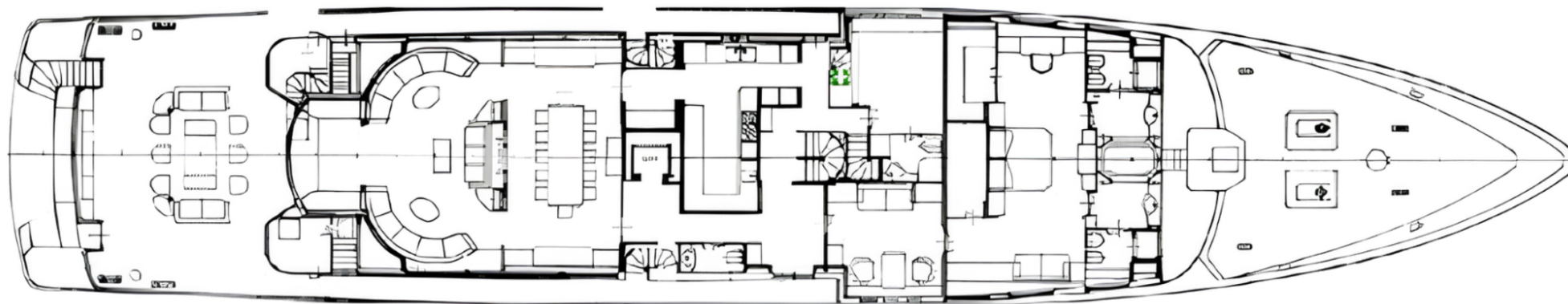
SUNDECK





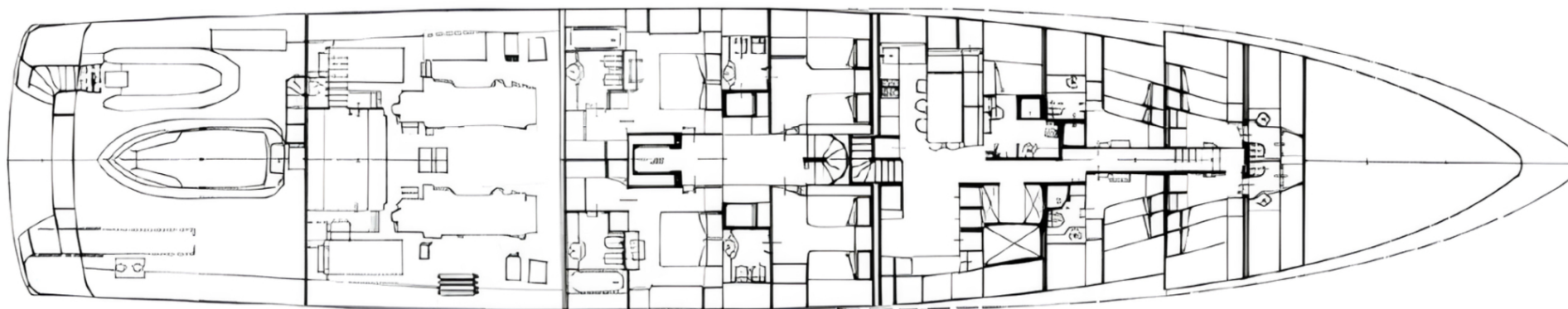
UPPER DECK





MAIN DECK





LOWER DECK





KIRILL KUATOV

+377 607 93 15 20

+39 333 576 44 44

 [Send e-mail](#)

 WhatsApp

 Telegram

[More information about M/Y INVADER at www.nauyachts.com](#)

[Watch video](#)