



Brokerage

NAU
YACHTS

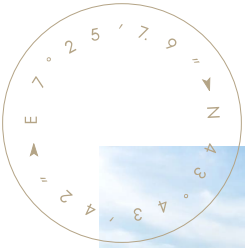
REBECCA V

MOTOR YACHT BENETTI 25.83M 2009

€2,099,000
FLAG - MALTA

MOTOR YACHT

REBECCA V



REBECCA V, a **Benetti Legend 85**, blends the advantages of sub-24-metre registration with the kind of features typically found on far larger yachts. A standout element is the owner's cabin on the main deck - uncommon for this size range and a major boost to comfort, particularly for family cruising. Her long range, Zero-Speed stabilisers and strong charter appeal in the Mediterranean make her equally compelling for private enjoyment or those considering commercial opportunities. Built in 2009 and consistently maintained, **REBECCA V** retains the recognisable Stefano Righini exterior lines and the warm interior atmosphere created by Zuretti. A bright main saloon with panoramic windows forms a welcoming social area, while accommodation is arranged for 10 guests in four cabins, including the main-deck master. On the lower deck, a full-beam VIP suite is complemented by two guest cabins, each with an additional berth. The crew of four is accommodated in two practical cabins, ensuring efficient and discreet service. Outdoor spaces are designed for relaxed Mediterranean living: an aft terrace ideal for open-air dining, a bow sunbathing area and a flybridge with sofas, bar and shade options. The GRP displacement hull offers fuel efficiency and a range of up to 4,000 nautical miles at 8 knots, while CMC stabilisers enhance comfort underway and at anchor. A 4.2-metre tender is stored on the flybridge, and the swim platform provides dedicated space for a Sea-Doo and additional equipment - a tidy arrangement that keeps the yacht ready for effortless days on the water.

[see more information about M/Y REBECCA V at www.nauyachts.com](http://www.nauyachts.com)

SPECIFICATION

| | |
|--------------------|-------------------|
| SHIPYARD, MODEL | Benetti Legend 85 |
| BUILT | 2009 |
| LENGTH | 25.83 m |
| WATERLINE LENGTH | 21.2 m |
| HULL CONFIGURATION | DISPLACEMENT |
| BEAM | 6.75 m |
| RANGE | 4000 |
| DRAFT | 1.67 m |
| GROSS TONNAGE | 103 GT |
| YACHT CLASS | RINA |
| CABINS | 4+2 |
| MASTER CABIN | MAIN DECK |
| GUESTS | 10 |
| BERTHS | 10+4 |
| CREW | 4 |
| HEADS | 5+1 |

| | |
|--------------------------------------|------------------------------|
| EXTERIOR DESIGN | STEFANO RIGHINI |
| INTERIOR DESIGN | ZURETTI INTERIOR DESIGN |
| HULL | GRP |
| SUPERSTRUCTURE | GRP |
| ENGINES | 2 x Caterpillar C18 885 h.p. |
| TYPE OF DRIVE | SHAFT LINE |
| ENGINE HOURS | 5338 h |
| MAXIMUM SPEED | 13 kn |
| CRUISING SPEED | 10 kn |
| FUEL CONSUMPTION AT ECONOMICAL SPEED | ~ 180 l/h |
| FUEL | 16400 l |
| GREY WATER | N/A |
| BLACK WATER | 2680 l |
| FRESH WATER | 3059 l |
| DISPLACEMENT | N/A |

[see more information about M/Y REBECCA V at www.nauyachts.com](http://www.nauyachts.com)



EXTERIOR BENETTI LEGEND 85 2009 MY
REBECCA V

M/Y REBECCA V



EXTERIOR BENETTI LEGEND 85 2009 MY
REBECCA V

M/Y REBECCA V



EXTERIOR BENETTI LEGEND 85 2009 MY
REBECCA V

M/Y REBECCA V



FLYBRIDGE LOUNGE AREA

M/Y REBECCA V



BOW SUNBATHING AREA

M/Y REBECCA V



BOW SUNBATHING AREA

M/Y REBECCA V



STARBOARD

M/Y REBECCA V



AFT MAIN DECK DINING AREA

M/Y REBECCA V



LOUNGE AREA IN THE MAIN SALON

M/Y REBECCA V



LOUNGE AREA IN THE MAIN SALON

M/Y REBECCA V



DINING AREA IN THE MAIN SALON

M/Y REBECCA V



DINING AREA IN THE MAIN SALON

M/Y REBECCA V



MASTER CABIN

M/Y REBECCA V



MASTER CABIN

M/Y REBECCA V



GUEST CABIN

M/Y REBECCA V



GUEST CABIN

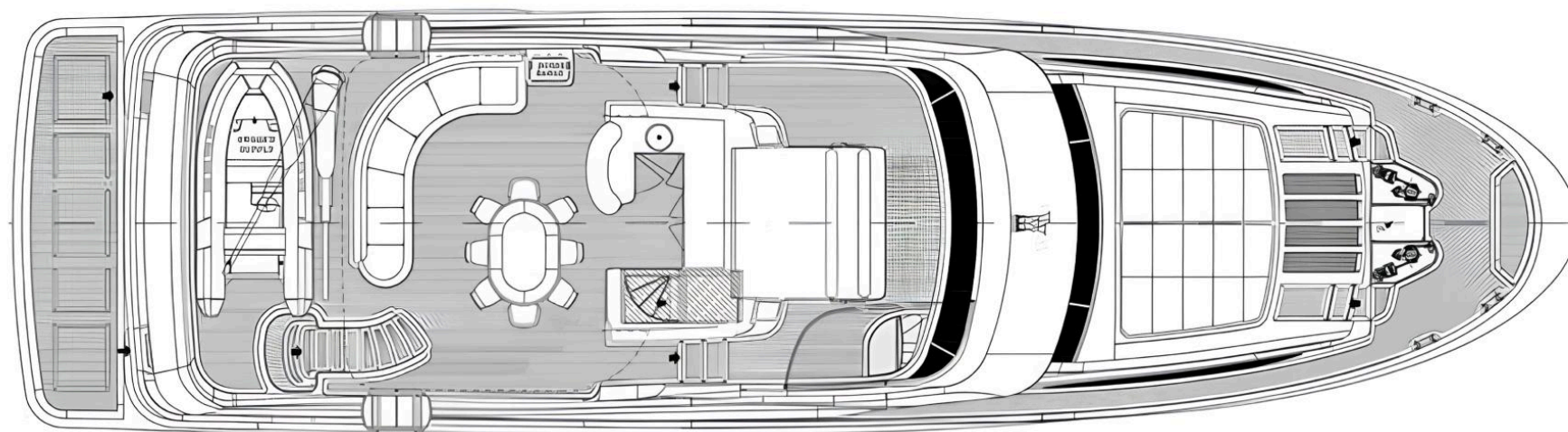
M/Y REBECCA V



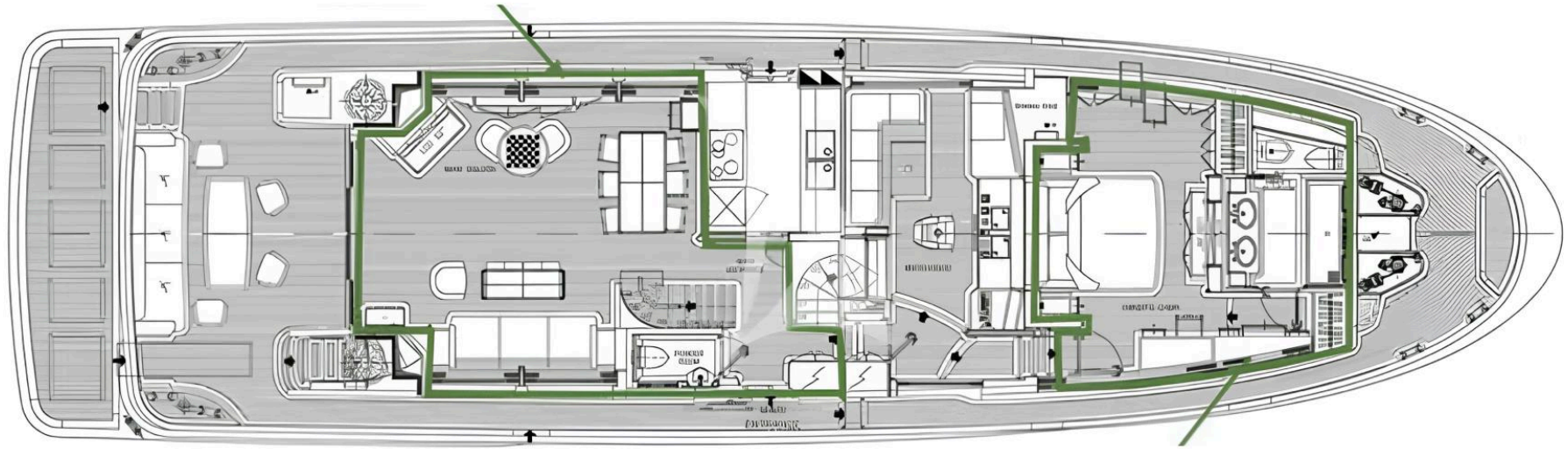
GUEST BATHROOM

M/Y REBECCA V

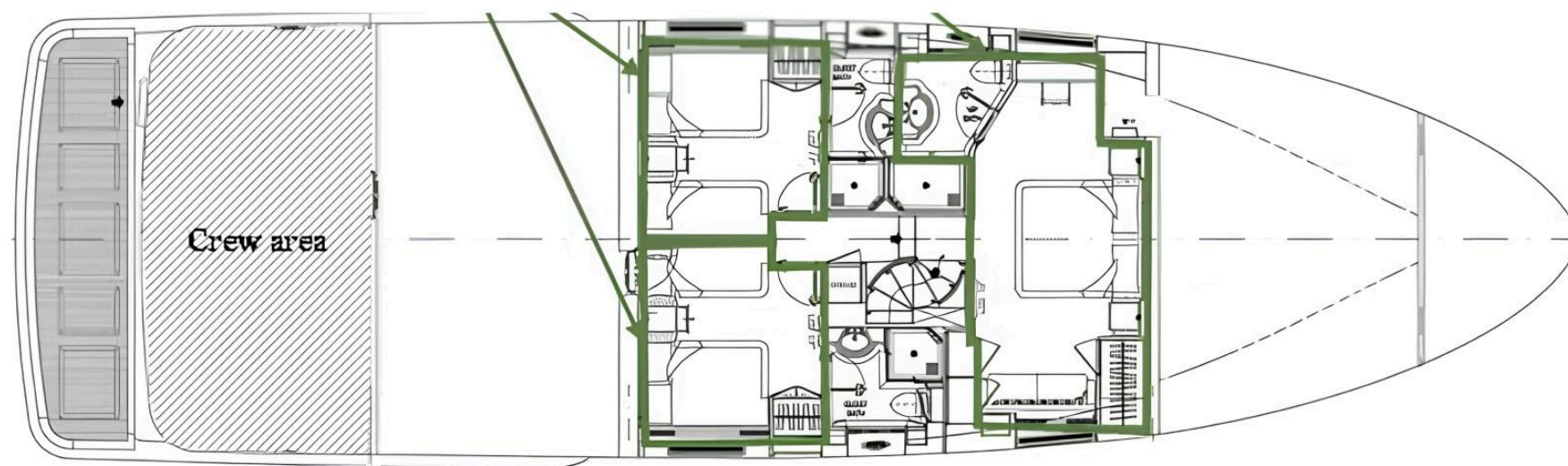
General Arrangement



FLYBRIDGE



MAIN DECK



LOWER DECK



KIRILL KUATOV

+377 607 93 15 20

+39 333 576 44 44

 [Send e-mail](#)

 WhatsApp

 Telegram

[More information about M/Y REBECCA V at www.nauyachts.com](#)

[Watch video](#)