



Brokerage

NAU
YACHTS

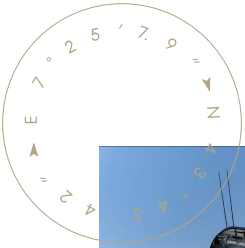
COCOY

MOTOR YACHT RIVA 25.29M 2025

€7,400,000
FLAG - MALTA

MOTOR YACHT

COCOY



COCOY – Riva 82' Diva (2025) is a modern high-performance motor yacht designed to deliver fast passages with true superyacht-level comfort. She is powered by twin MAN V12 engines rated at 1,900 hp each, providing a cruising speed of around 27 knots and a top speed in excess of 30 knots. Fin and gyroscopic stabilizers ensure excellent comfort both underway and at anchor, while upgraded generators and a tropical-spec air-conditioning system make her perfectly suited to warm-climate cruising.

Accommodation is for up to 8 guests in four luxurious en-suite staterooms, including a full-beam Owner's suite, one VIP cabin, and two guest cabins. Each cabin features marble-finished bathrooms, electric blackout blinds, and large panoramic windows. The main saloon, with its expansive glazing and sliding doors opening directly to the cockpit, creates a seamless indoor-outdoor living and dining space. Onboard systems include Starlink and 5G internet, satellite TV, and a premium audio system.

COCOY's exterior layout offers an aft cockpit, a hydraulic swim platform with beach-club function, a forward sunbathing area, and a flybridge with lounge, bar, and dining areas. Her Shark Grey hull with black accents and underwater lighting highlights the yacht's dynamic, sporty profile.

COCOY – Riva 82' Diva combines impressive performance, contemporary Italian design, and well-thought-out leisure spaces, making her equally suited for exhilarating cruising and relaxed time at anchor.

[see more information about M/Y COCOY at www.nauyachts.com](http://www.nauyachts.com)

SPECIFICATION

SHIPYARD, MODEL	Riva 82' Diva
BUILT	2025
LENGTH	25.29 m
WATERLINE LENGTH	21.14 m
HULL CONFIGURATION	PLANING
BEAM	5.96 m
RANGE	290
DRAFT	2.05 m
GROSS TONNAGE	90 GT
YACHT CLASS	CE
CABINS	4+2
MASTER CABIN	LOWER DECK
GUESTS	8
BERTHS	8+3
CREW	3
HEADS	4+1

EXTERIOR DESIGN	OFFICINA ITALIANA DESIGN
INTERIOR DESIGN	OFFICINA ITALIANA DESIGN
HULL	GRP
SUPERSTRUCTURE	GRP
ENGINES	2 x MAN V12 1900 h.p.
TYPE OF DRIVE	SHAFT LINE
ENGINE HOURS	N/A
MAXIMUM SPEED	30 kn
CRUSING SPEED	27 kn
FUEL CONSUMPTION AT ECONOMICAL SPEED	~ 570 l/h
FUEL	6400 l
GREY WATER	N/A
BLACK WATER	N/A
FRESH WATER	1100 l
DISPLACEMENT	77.5

[see more information about M/Y COCOY at www.nauyachts.com](http://www.nauyachts.com)



EXTERIOR RIVA 82 DIVA 2025 MY COCOY

M/Y COCOY



EXTERIOR RIVA 82 DIVA 2025 MY COCOY

M/Y COCOY



EXTERIOR RIVA 82 DIVA 2025 MY COCOY

M/Y COCOY



EXTERIOR RIVA 82 DIVA 2025 MY COCOY

M/Y COCOY



EXTERIOR RIVA 82 DIVA 2025 MY COCOY

M/Y COCOY



COCKPIT SEATING AREA

M/Y COCOY



COCKPIT SEATING AREA

M/Y COCOY



COCKPIT DINING AREA

M/Y COCOY



COCKPIT DINING AREA

M/Y COCOY



COCKPIT DINING AREA

M/Y COCOY



BOW LOUNGE AREA

M/Y COCOY



FLYBRIDGE LOUNGE AREA

M/Y COCOY



FLYBRIDGE DINING AREA

M/Y COCOY



FLYBRIDGE LOUNGE AREA

M/Y COCOY



FLYBRIDGE DINING AREA

M/Y COCOY



MAIN SALON LOUNGE AREA

M/Y COCOY



MAIN SALON LOUNGE AREA

M/Y COCOY



MAIN SALON LOUNGE AREA

M/Y COCOY



MAIN SALON LOUNGE AREA

M/Y COCOY



MAIN SALON DINING ARE

M/Y COCOY



MASTER CABIN

M/Y COCOY



MASTER CABIN

M/Y COCOY



MASTER CABIN

M/Y COCOY



MASTER BATHROOM

M/Y COCOY



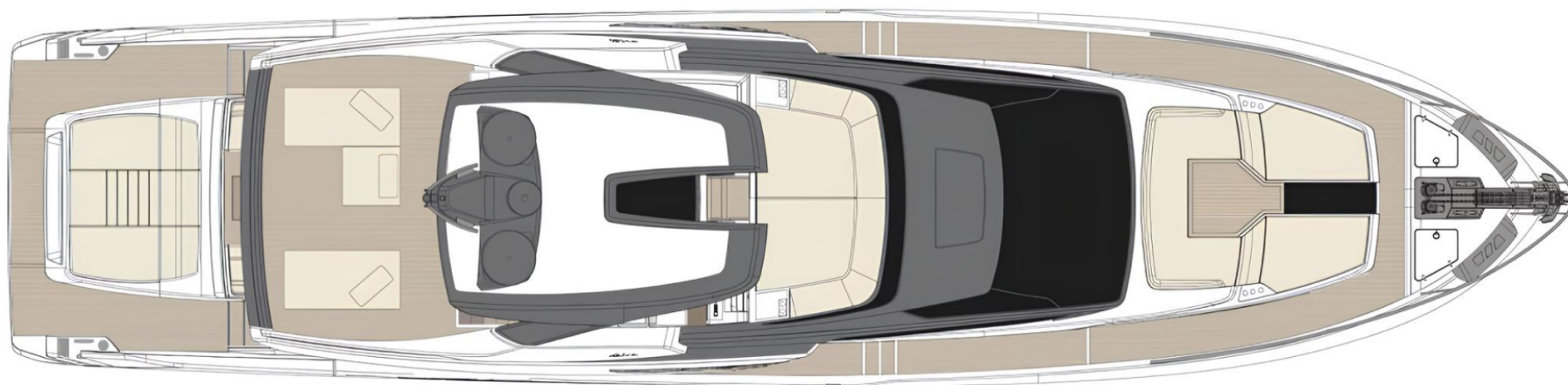
VIP CABIN

M/Y COCOY

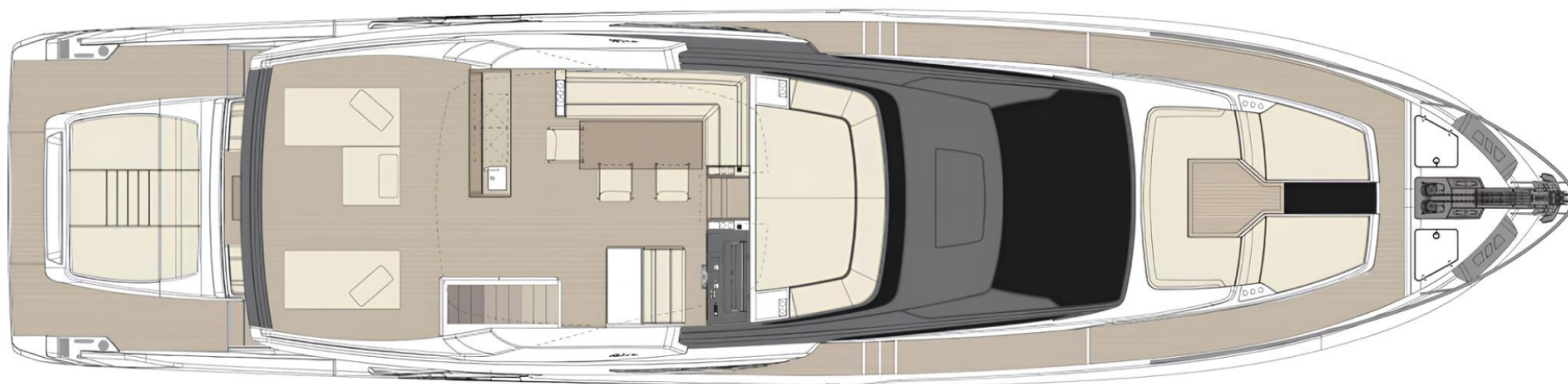
General Arrangement



PROFILE



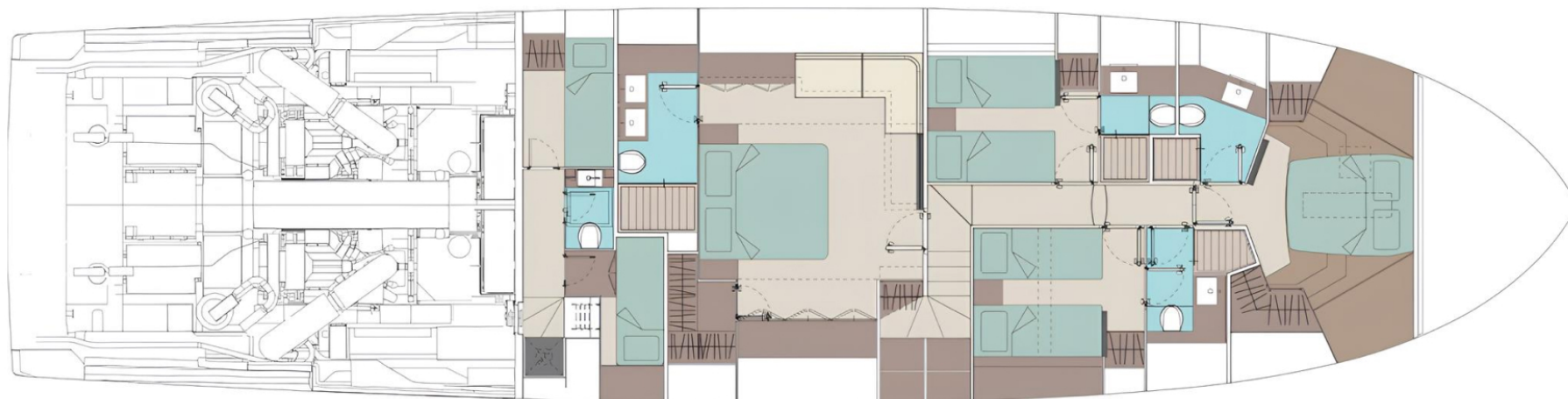
TOP VIEW



FLYBRIDGE



MAIN DECK



LOWER DECK



KIRILL KUATOV

+377 607 93 15 20

+39 333 576 44 44

 [Send e-mail](#)

 WhatsApp

 Telegram