



Brokerage

NAU
YACHTS

CYLN

MOTOR YACHT CUSTOM LINE 29.7M 2007

€2,650,000

FLAG - UK

MOTOR YACHT

CYLN



Motor Yacht **CYLN - Ferretti Custom Line 97** is a 29.7-meter classic Italian yacht built in 2007, combining performance, comfort, and timeless style. The GRP hull features a deep V-shaped keel, with teak decks and a durable gelcoat finish for easy maintenance and longevity.

The interiors, designed by Zuccon International Project, accommodate 12 guests in five cabins: a full-beam Owner's suite on the main deck, two VIP cabins, and two double guest cabins. The crew of three is housed in three separate cabins, ensuring privacy and efficiency. The layout offers spacious living areas, dedicated saloon and dining spaces, and comfortable circulation throughout the yacht.

CYLN is powered by twin MTU 16V 2000 M93 engines of 2,400 hp each, achieving a cruising speed of 17 knots and a top speed of 27 knots. Zero-speed and underway stabilizers and a Condaria air-conditioning system ensure comfort in all conditions. Exterior amenities include a flybridge with hardtop, an aft deck with sunbathing and dining areas, and concealed TVs in the saloon and aft cockpit. Entertainment is complemented by a Bang & Olufsen premium audio system.

CYLN - Ferretti Custom Line 97 combines proven reliability, spacious interiors, and high performance, making her ideal for both private use and charter operations.

[see more information about M/Y CYLN at www.nauyachts.com](http://www.nauyachts.com)

SPECIFICATION

SHIPYARD, MODEL	Custom Line 97'
BUILT	2007
LENGTH	29.7 m
WATERLINE LENGTH	26.12 m
HULL CONFIGURATION	PLANING
BEAM	7.9 m
RANGE	280
DRAFT	1.8 m
GROSS TONNAGE	176 GT
YACHT CLASS	CE
CABINS	5+3
MASTER CABIN	MAIN DECK
GUESTS	12
BERTHS	12+3
CREW	3
HEADS	5+2

EXTERIOR DESIGN	ZUCCON INTERNATIONAL PROJECT
INTERIOR DESIGN	ZUCCON INTERNATIONAL PROJECT
HULL	GRP
SUPERSTRUCTURE	GRP
ENGINES	2 x MTU 16V 2000 M93 2400 h.p.
TYPE OF DRIVE	SHAFT LINE
ENGINE HOURS	2595 h
MAXIMUM SPEED	27 kn
CRUISING SPEED	17 kn
FUEL CONSUMPTION AT ECONOMICAL SPEED	~ 460 l/h
FUEL	13040 l
GREY WATER	1000 l
BLACK WATER	1000 l
FRESH WATER	3000 l
DISPLACEMENT	118

[see more information about M/Y CYLN at www.nauyachts.com](http://www.nauyachts.com)



EXTERIOR CUSTOM LINE 97 2007 MY CYLN

M/Y CYLN



EXTERIOR CUSTOM LINE 97 2007 MY CYLN

M/Y CYLN



EXTERIOR CUSTOM LINE 97 2007 MY CYLN

M/Y CYLN



COCKPIT SEATING AREA

M/Y CYLN



COCKPIT DINING AREA

M/Y CYLN



BOW LOUNGE AREA

M/Y CYLN



BOW LOUNGE AREA

M/Y CYLN



FLYBRIDGE DINING AREA

M/Y CYLN



FLYBRIDGE LOUNGE AREA

M/Y CYLN



SECOND HELM STATION

M/Y CYLN



MAIN SALON LOUNGE AREA

M/Y CYLN



MAIN HELM STATION

M/Y CYLN



MASTER CABIN

M/Y CYLN



MASTER CABIN

M/Y CYLN



VIP CABIN

M/Y CYLN



VIP CABIN

M/Y CYLN



GUEST CABIN

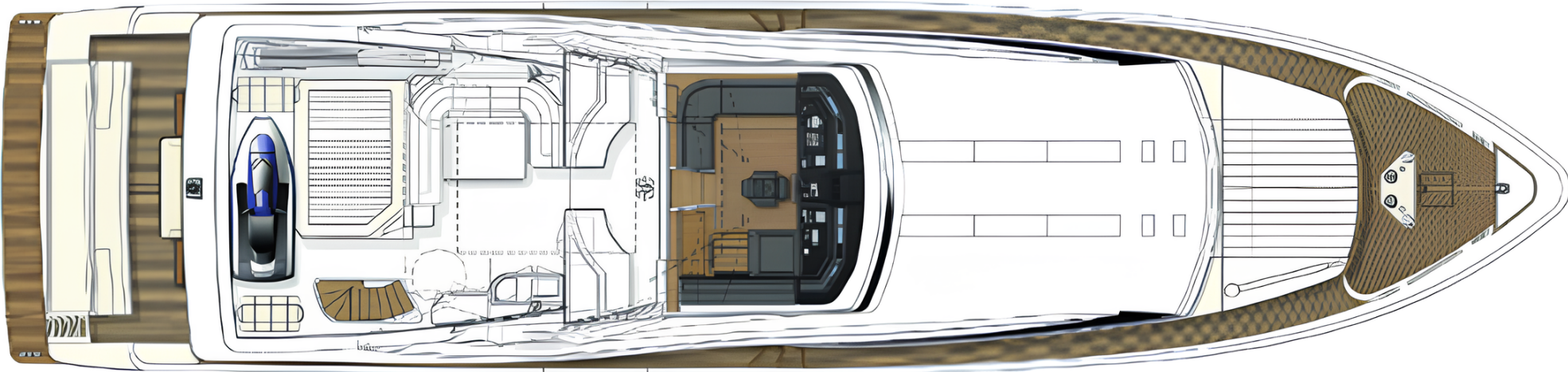
M/Y CYLN



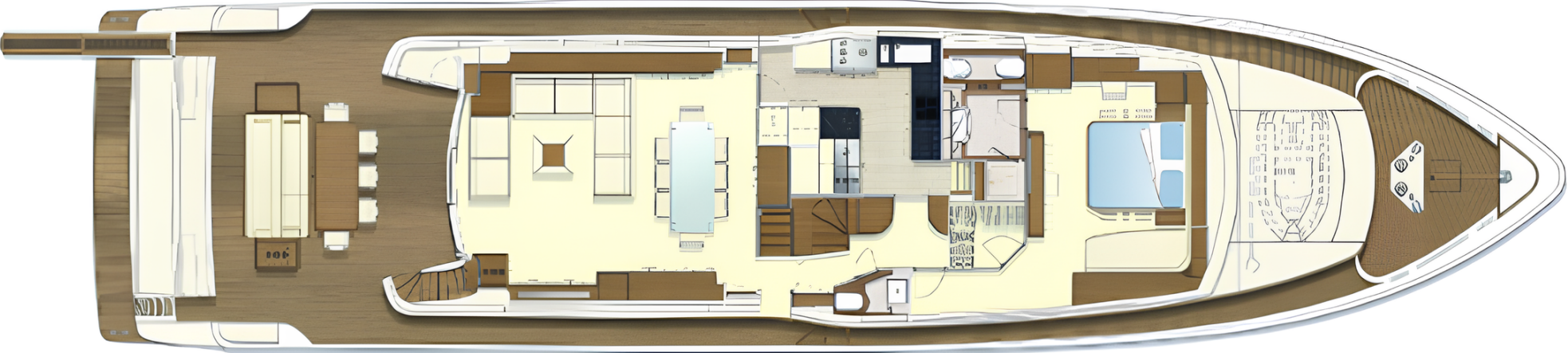
GUEST CABIN

M/Y CYLN

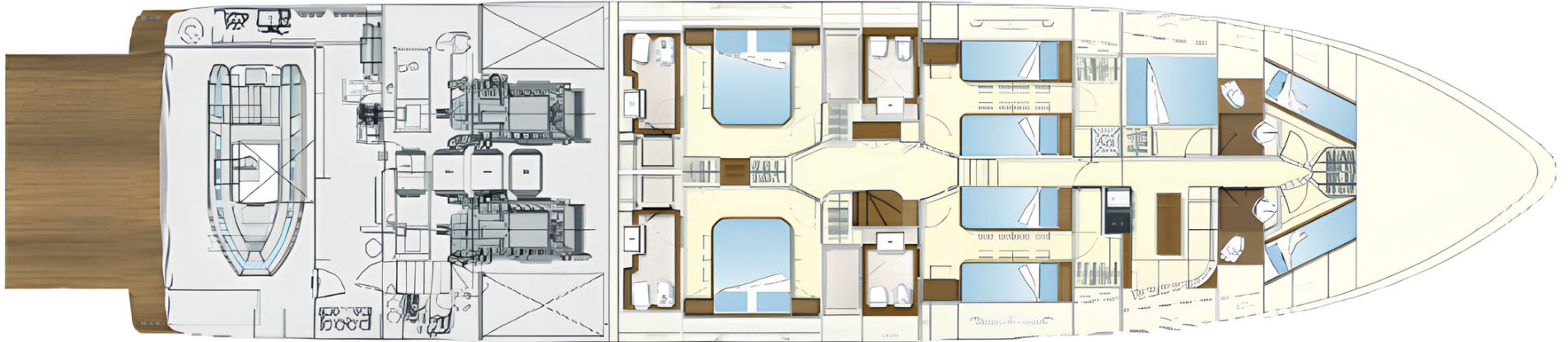
General Arrangement



FLYBRIDGE



MAIN DECK



LOWER DECK



KIRILL KUATOV

+377 607 93 15 20

+39 333 576 44 44

 [Send e-mail](#)

 WhatsApp

 Telegram