



Brokerage

NAU  
YACHTS

TOLEMAI

MOTOR YACHT    SANLORENZO 43.6M    2023

€30,950,000 (VAT  
paid)  
FLAG - ITALY

MOTOR YACHT

# TOLEMAI



**TOLEMAI - Sanlorenzo 44 X-Space**, launched in 2023, combines Italian elegance, innovative design, and exceptional comfort, and is purpose-built for long-range cruising.

She accommodates up to 12 guests in five en-suite staterooms, including a dedicated Owner's deck with a panoramic full-beam Master suite, two VIP cabins, and two guest cabins with Pullman berths on the lower deck. The Owner's suite spans the entire upper deck and features a king-size bed, private lounge, office, private sun deck, double vanity, large shower with window, walk-in wardrobes, and a fully integrated entertainment system with Sky TV and Heon/Denon audio.

The yacht's social areas include a main saloon with flexible, movable furniture and a concealed TV, an upper saloon with a marble dining table for 12 guests, and multiple outdoor lounges and dining areas across her decks. Exterior spaces are arranged with sun loungers, shaded dining areas, and a swimming pool, while additional onboard amenities include a fully equipped gym, tenders, and a comprehensive selection of water toys.

**TOLEMAI** is fitted with state-of-the-art navigation, communication, and safety systems and is designed for efficient long-distance cruising, with a remarkably low fuel consumption of approximately 150 litres per hour per engine at cruising speed. With her generous volume, intelligent layout, and high level of onboard comfort, **TOLEMAI** represents a rare opportunity to acquire a fully equipped, elegant explorer yacht, ready for extended voyages in complete luxury.

[see more information about M/Y TOLEMAI at www.nauyachts.com](http://www.nauyachts.com)

# SPECIFICATION

SHIPYARD, MODEL	Sanlorenzo 44X-Space
BUILT	2023
LENGTH	43.6 m
WATERLINE LENGTH	37.18 m
HULL CONFIGURATION	DISPLACEMENT
BEAM	8.43 m
RANGE	4000
DRAFT	2.8 m
GROSS TONNAGE	498 GT
YACHT CLASS	RINA
CABINS	5+5
MASTER CABIN	UPPER DECK
GUESTS	12
BERTHS	12+9
CREW	9
HEADS	7+5

EXTERIOR DESIGN	ZUCCON INTERNATIONAL PROJECT
INTERIOR DESIGN	STUDIO LISSONI
HULL	STEEL
SUPERSTRUCTURE	ALUMINIUM
ENGINES	2 x MAN D2862 LE489 1430 h.p.
TYPE OF DRIVE	SHAFT LINE
ENGINE HOURS	1350 h
MAXIMUM SPEED	16 kn
CRUISING SPEED	12.5 kn
FUEL CONSUMPTION AT ECONOMICAL SPEED	~ 150 l/h
FUEL	52800 l
GREY WATER	7550 l
BLACK WATER	5420 l
FRESH WATER	12000 l
DISPLACEMENT	N/A

[see more information about M/Y TOLEMAI at www.nauyachts.com](http://www.nauyachts.com)





EXTERIOR SANLORENZO 44 X-SPACE 2023 MY  
TOLEMAI

M/Y TOLEMAI





AFT MAIN DECK LOUNGE AREA

M/Y TOLEMAI





AFT MAIN DECK DINING AREA

M/Y TOLEMAI





AFT MAIN DECK LOUNGE AREA

M/Y TOLEMAI





AFT MAIN DECK LOUNGE AREA

M/Y TOLEMAI





AFT MAIN DECK LOUNGE AREA

M/Y TOLEMAI





AFT UPPER DECK LOUNGE AREA

M/Y TOLEMAI





AFT UPPER DECK LOUNGE AREA

M/Y TOLEMAI





BOW LOUNGE AREA

M/Y TOLEMAI





SUNDECK DINING AREA

M/Y TOLEMAI





UPPER DECK SALOON DINING AREA

M/Y TOLEMAI





UPPER DECK SALOON

M/Y TOLEMAI





MAIN SALON LOUNGE AREA

M/Y TOLEMAI





MAIN SALON LOUNGE AREA

M/Y TOLEMAI





MAIN SALON LOUNGE AREA

M/Y TOLEMAI





MAIN SALON LOUNGE AREA

M/Y TOLEMAI





MASTER CABIN

M/Y TOLEMAI





MASTER CABIN

M/Y TOLEMAI





MASTER CABIN

M/Y TOLEMAI





MASTER BATHROOM

M/Y TOLEMAI





MASTER BATHROOM

M/Y TOLEMAI





MASTER BATHROOM

M/Y TOLEMAI





VIP CABIN

M/Y TOLEMAI





VIP CABIN

M/Y TOLEMAI





GUEST CABIN

M/Y TOLEMAI





GUEST CABIN

M/Y TOLEMAI

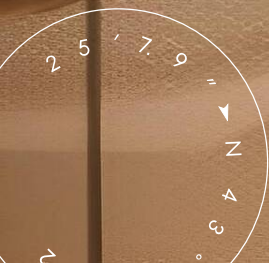




GUEST BATHROOM

M/Y TOLEMAI





GUEST BATHROOM

M/Y TOLEMAI





GUEST CABIN

M/Y TOLEMAI





GUEST CABIN

M/Y TOLEMAI





MAIN HELM STATION

M/Y TOLEMAI





GALLEY

M/Y TOLEMAI





GYM

M/Y TOLEMAI



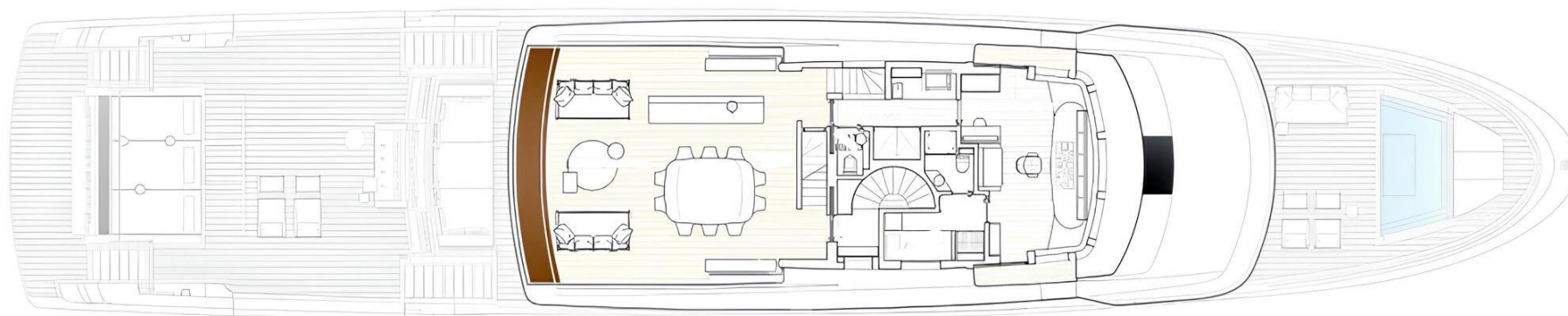
# General Arrangement





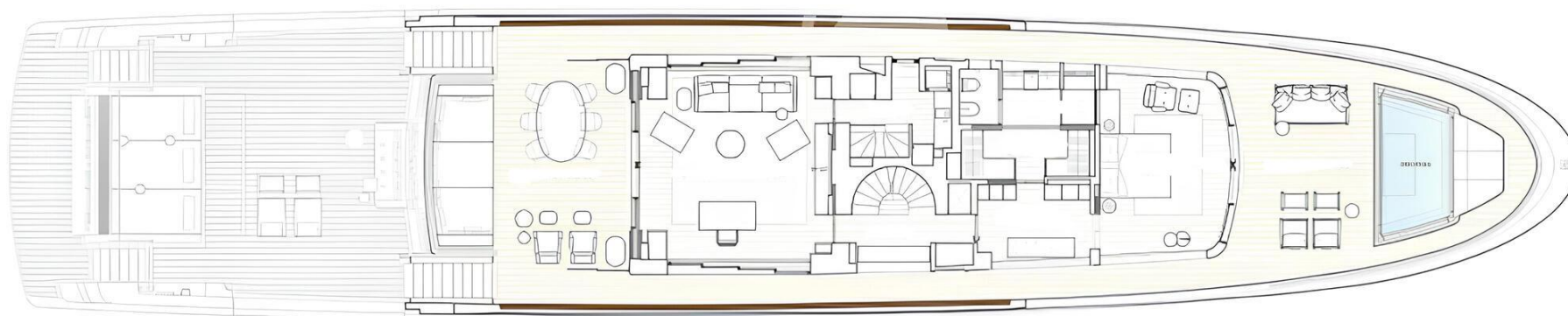
PROFILE





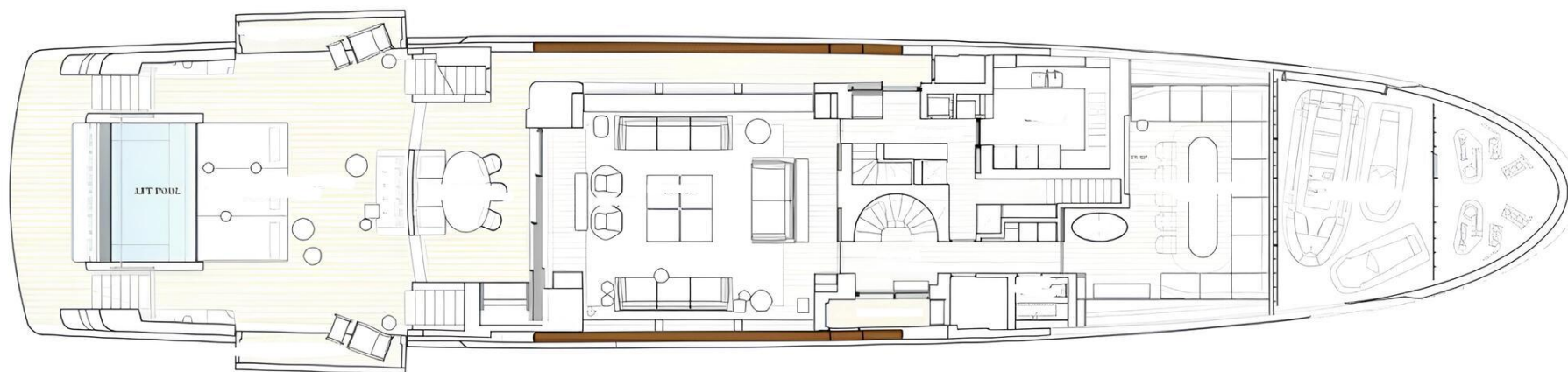
SUNDECK





UPPER DECK





---

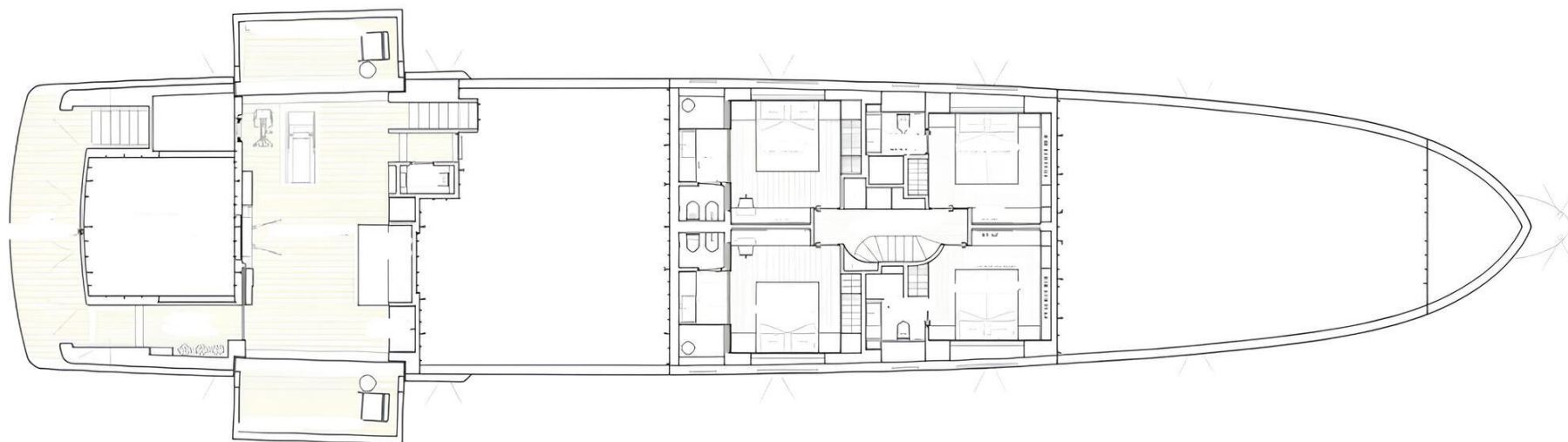
---

---

---

## MAIN DECK





LOWER DECK



## KIRILL KUATOV

+377 607 93 15 20

+39 333 576 44 44

 [Send e-mail](#)

 WhatsApp

 Telegram

[More information about M/Y TOLEMAI at www.nauyachts.com](#)

[Watch video](#)