



New Build

NAU
YACHTS

WALLYWHY200

MOTOR YACHT

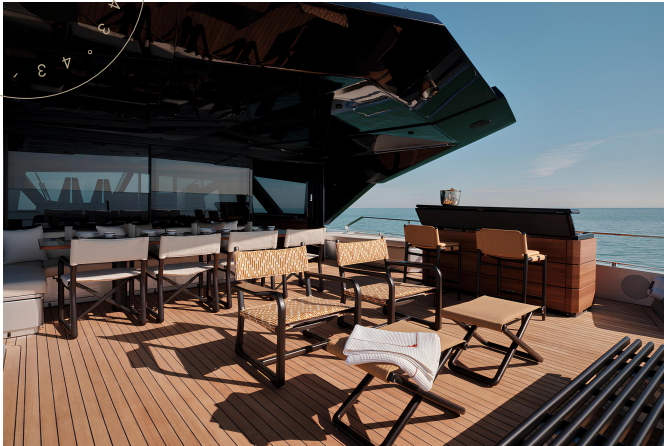
WALLY 27.03M

2026

FLAG -

MOTOR YACHT

WALLYWHY200



Wallywhy200 is a 27-metre motor yacht (under 200 GT) featuring an increased beam and a high, flared bow, enabling layout solutions typically found on significantly larger yachts.

The full-beam Owner's suite is located on the main deck. Nearly 270° of floor-to-ceiling panoramic glazing provides excellent natural light and outward visibility. The lower deck accommodates one VIP cabin and two guest cabins, each with en-suite bathrooms. In total, the yacht offers 4 cabins for up to 8 guests. Crew quarters comprise three cabins with two bathrooms. All decks are connected by a carbon-fibre staircase designed as a single load-bearing structural element. The yacht is certified for comfortable hosting of up to 20 persons on board.

The bow is raised by 4.7 metres, and the hull form is engineered to enhance seakeeping performance, reduce slamming loads in waves, and deliver high transverse stability while maintaining semi-displacement characteristics. Naval architecture was developed by Laurent Giles studio. The exterior design focuses on functionality and efficient circulation between decks. Aft, the yacht features a beach club with fold-down side platforms and a swim platform. A 4.15-metre tender and water toys are stored in a concealed aft garage. The flybridge is protected by Wally's signature glass-and-carbon dome.

The yacht is powered by Volvo Penta D13 IPS 1350 engines. Cruising speed is approximately 20 knots, with a top speed of up to 23 knots (depending on configuration). Range at cruising speed is approximately 370 nautical miles.

[see more information about M/Y WALLYWHY200 at www.nauyachts.com](http://www.nauyachts.com)

SPECIFICATION

SHIPYARD, MODEL	Wally WHY200
BUILT	2026
LENGTH	27.03 m
WATERLINE LENGTH	23.92 m
HULL CONFIGURATION	SEMI-DISPLACEMENT
BEAM	7.66 m
RANGE	370
DRAFT	2.1 m
GROSS TONNAGE	199 GT
YACHT CLASS	B+F
CABINS	4+3
MASTER CABIN	MAIN DECK
GUESTS	8
BERTHS	8+5
CREW	5
HEADS	6+2

EXTERIOR DESIGN	LUCA BASSANI DESIGN
INTERIOR DESIGN	VALLICELLI
HULL	GRP
SUPERSTRUCTURE	GRP
ENGINES	4 x Volvo Penta IPS 1000 h.p.
TYPE OF DRIVE	VOLVO PENTA IPS
ENGINE HOURS	N/A
MAXIMUM SPEED	23 kn
CRUISING SPEED	20 kn
FUEL CONSUMPTION AT ECONOMICAL SPEED	~ 150 l/h
FUEL	12000 l
GREY WATER	N/A
BLACK WATER	N/A
FRESH WATER	2200 l
DISPLACEMENT	126

[see more information about M/Y WALLYWHY200 at www.nauyachts.com](http://www.nauyachts.com)



EXTERIOR WALLYWHY200

M/Y WALLYWHY200



EXTERIOR WALLYWHY200

M/Y WALLYWHY200



EXTERIOR WALLYWHY200

M/Y WALLYWHY200



EXTERIOR WALLYWHY200

M/Y WALLYWHY200



EXTERIOR WALLYWHY200

M/Y WALLYWHY200



AFT AREA

M/Y WALLYWHY200



BEACH CLUB

M/Y WALLYWHY200



AFT MAIN DECK LOUNGE AREA

M/Y WALLYWHY200



AFT MAIN DECK LOUNGE AREA

M/Y WALLYWHY200



BOW AREA

M/Y WALLYWHY200



BOW LOUNGE AREA

M/Y WALLYWHY200



FLYBRIDGE LOUNGE AREA

M/Y WALLYWHY200



FLYBRIDGE DINING AREA

M/Y WALLYWHY200



FLYBRIDGE LOUNGE AREA

M/Y WALLYWHY200



FLYBRIDGE LOUNGE AREA

M/Y WALLYWHY200



FLYBRIDGE LOUNGE AREA

M/Y WALLYWHY200



MAIN HELM STATION

M/Y WALLYWHY200



MAIN SALON DINING AREA

M/Y WALLYWHY200



MAIN SALON DINING AREA

M/Y WALLYWHY200



MASTER CABIN

M/Y WALLYWHY200



MASTER CABIN

M/Y WALLYWHY200



MASTER CABIN

M/Y WALLYWHY200



VIP CABIN

M/Y WALLYWHY200



VIP CABIN

M/Y WALLYWHY200



VIP CABIN

M/Y WALLYWHY200



VIP CABIN

M/Y WALLYWHY200



VIP CABIN

M/Y WALLYWHY200



VIP BATHROOM

M/Y WALLYWHY200



GUEST CABIN

M/Y WALLYWHY200



GUEST CABIN

M/Y WALLYWHY200



GUEST CABIN

M/Y WALLYWHY200



GUEST CABIN

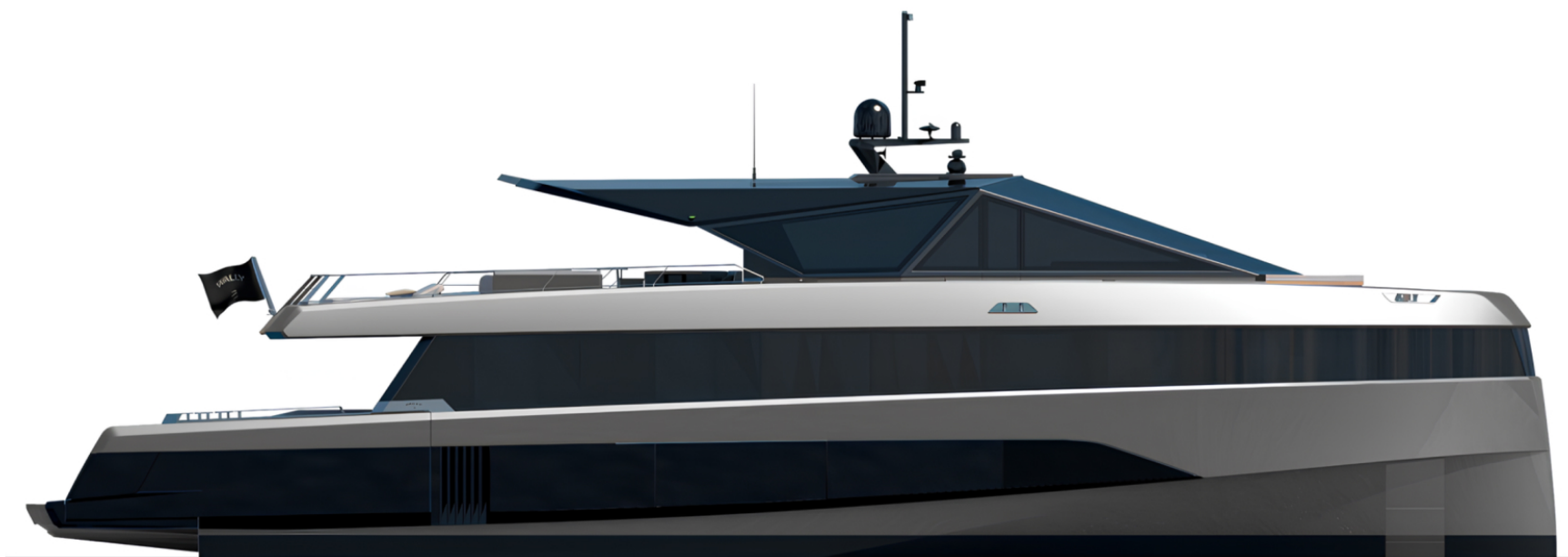
M/Y WALLYWHY200



GUEST BATHROOM

M/Y WALLYWHY200

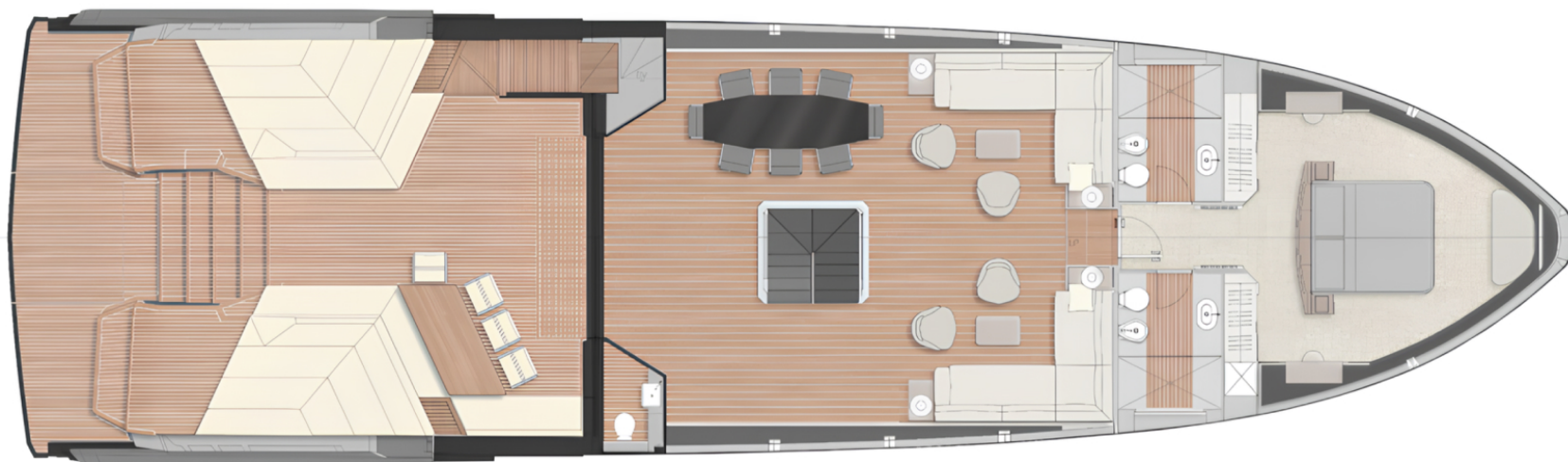
General Arrangement



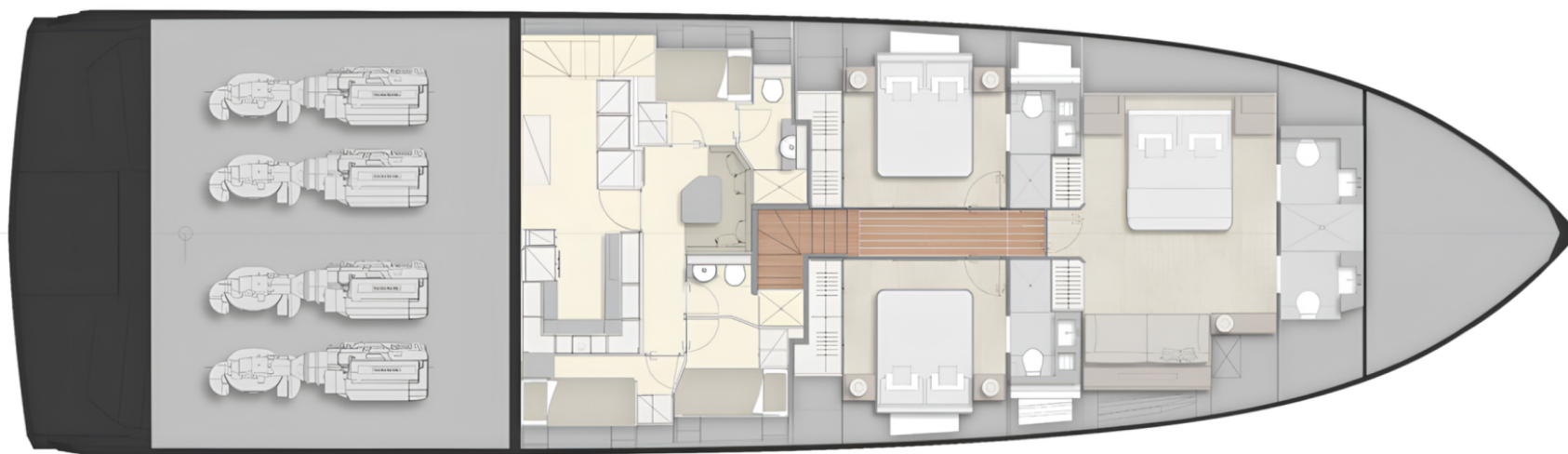
PROFILE



FLYBRIDGE



MAIN DECK



LOWER DECK



KIRILL KUATOV

+377 607 93 15 20

+39 333 576 44 44

 [Send e-mail](#)

 WhatsApp

 Telegram

[More information about M/Y WALLYWHY200 at www.nauyachts.com](#)

[Watch video](#)